

Romance with prison inmate evolves into love triangle



DEAR ABBY
ADVICE

DEAR ABBY: I am a 42-year-old mother of three who has been in a relationship with a man for almost six years. He is incarcerated. We started out as friends. Things were great until this year, when he reconnected with an old girlfriend.

I had a conversation with her over Facebook, and she wanted to invite me out for coffee one day. I ended up messaging her later on that night, and she told my boy-

friend I had "made her uncomfortable." She ended up blocking me on Facebook.

Abby, he's now saying he's in love with both of us. I'm not allowed to talk about her, and anything they talk about is "none of my business." I do not get as many phone calls from him as I used to, and I think it's because of her. I'm not sure what her plans are, but I get the feeling she's trying to get me out of the picture. Please tell me what to do. — **CROWDED IN ALASKA**

DEAR CROWDED: Forgive me for seeming negative, but from what you have written, I don't think this man is in love with either one of you. What you

should "do" is reassess your relationship with this two-timing felon. His ex-girlfriend may indeed be maneuvering to get you out of the picture, and my advice to you, which I sincerely hope you will follow, is to let her do it. You may have started out as "friends" with this man, but friends do NOT treat friends the way he has been treating you.

DEAR ABBY: I've read many letters over the years about relationships in which there is a significant age gap, and thought I would like to share a success story. My boyfriend and I have a 22-year age difference, and we couldn't be happier. We are both divorced with children (his is

grown and lives independently; mine are 14 and 11). We found each other about a year before the pandemic. He was above the age range I'd specified on online dating apps, but we met at a mutual friend's art opening. There were immediate sparks, and we didn't realize our age difference until about a week later. By then the seeds of a mature, noncodependent relationship were sprouting.

He's 60 now, and I am 38. We live separately, but go back and forth between the houses most nights. He's actively engaged in my kids' lives, and we're talking about marriage. Because of our age difference, this includes dis-

cussing wills, estate planning and the hurdles that come with retirement and raising high schoolers, but we do it with great respect for where the other is in their own journey. This is the best relationship either of us has ever been in. I'm so glad we didn't let our age difference prevent us from enjoying this life together. — **LUCKIEST GIRL IN TEXAS**

DEAR LUCKIEST GIRL: When both parties are adults with experience in the world, age is only a number. While there can be challenges in May-December unions, you and your boyfriend appear to be looking at the future with eyes wide open. Thank you for your upper of a letter.

South African scientists detect new virus variant amid spike

By ANDREW MELDRUM and MOGOMOTSI MAGOME
The Associated Press

JOHANNESBURG — A new coronavirus variant has been detected in South Africa that scientists say is a concern because of its high number of mutations and rapid spread among young people in Gauteng, the country's most populous province, Health Minister Joe Phaahla announced Thursday, Nov. 25.

The coronavirus evolves as it spreads and many new variants, including those with worrying mutations, often just die out. Scientists monitor for possible changes that could be more transmissible or deadly, but sorting out whether new variants will have a public health impact can take time.

South Africa has seen a dramatic rise in new infections, Phaahla said at an online press briefing.

"Over the last four or five days, there has been more of an exponential rise," he said, adding that the new variant appears to be driving the spike in cases. Scientists in South Africa are working to determine what percentage of the new cases have been caused by the new variant.

Currently identified as



Denis Farrell/The Associated Press, File

A baby cries as her mother receives her vaccine against COVID-19, in Johannesburg on Thursday, Oct. 21, 2021. A new COVID-19 variant has been detected in South Africa that scientists say is a concern because of its high number of mutations and rapid spread among young people in Gauteng, the country's most populous province, Minister of Health Joe Phaahla announced Thursday, Nov. 25, 2021.

B.1.1.529, the new variant has also been found in Botswana and Hong Kong in travelers from South Africa, he said.

The World Health Organization's technical working group met Nov. 26 to assess the new variant and may decide whether or not to give it a name from the Greek alphabet.

The British government banned flights from South Africa and five other southern African countries and that anyone who had recently arrived from those

countries would be asked to take a coronavirus test.

U.K. Health Secretary Sajid Javid said there were concerns the new variant "may be more transmissible" than the dominant delta strain, and "the vaccines that we currently have may be less effective" against it.

The new variant has a "constellation" of new mutations, said Tulio de Oliveira, from the Network for Genomic Surveillance in South Africa, who has tracked the spread of the

delta variant in the country.

The "very high number of mutations is a concern for predicted immune evasion and transmissibility," said de Oliveira.

"This new variant has many, many more mutations," including more than 30 to the spike protein that affects transmissi-

bility, he said. "We can see that the variant is potentially spreading very fast. We do expect to start seeing pressure in the health care system in the next few days and weeks."

De Oliveira said that a team of scientists from seven South African universities is studying the variant. They have 100 whole genomes of it and expect to have many more in the next few days, he said.

"We are concerned by the jump in evolution in this variant," he said. The one piece of good news is that it can be detected by a PCR test, he said.

After a period of relatively low transmission in which South Africa recorded just over 200 new cases per day, in the past week the daily new cases increased to more than 1,200 on Nov. 24. On Nov. 25, they jumped to 2,465.

The first surge was in Pretoria and the surrounding Tshwane metropolitan area and appeared to be cluster outbreaks from student gatherings at uni-

versities in the area, said health minister Phaahla. Amid the rise in cases, scientists studied the genomic sequencing and discovered the new variant.

"This is clearly a variant that we must be very serious about," said Ravindra Gupta, professor of microbiology at the University of Cambridge. "It has a high number of spike mutations that could affect transmissibility and immune response."

Gupta said scientists in South Africa need time to determine if the surge in new cases is attributable to the new variant. "There is a high probability that this is the case," he said. "South African scientists have done an incredible job of identifying this quickly and bringing it to the world's attention."

South African officials had warned that a new resurgence was expected from mid-December to early January and had hoped to prepare for that by getting many more people vaccinated, said Phaahla.

WE MAKE IT EASY with an online application

It's easy to apply for a home mortgage loan at Allied Mortgage Resource. Simply go to lagrandemannmortgage.com and complete an application form. After we process your request, we will contact you to meet with one of our financial officers. We make it easy for you to start the process of owning your own home.

ALLIED MORTGAGE RESOURCE
A Division of Mann Mortgage, LLC #2550

1229 Adams Ave
La Grande, OR
541-962-7557

WINDOWS 10 UPGRADE Still running unsupported Windows 7? We'll help you avoid critical issues by installing Windows 10!

HARD DRIVE UPGRADE Computer not running as fast as when it was new? Let us install lightning-fast solid state drive!

FAST AND RELIABLE!

Dale Bogardus
541-297-5831

Outstanding Computer Repair

Mobile Computer Repair
LET US COME TO YOU!
Call or Text - 24/7

All credit cards accepted

VISA MasterCard DISCOVER AMERICAN EXPRESS

weather

	TONIGHT	SUN	MON	TUE	WED
	Overcast	Mild with some sun	Cloudy with a shower	Turning cloudy	Rain and drizzle
Baker City	33	51 30	47 29	48 31	48 30
La Grande	42	55 38	47 35	50 44	54 35
Enterprise	39	56 37	47 31	51 39	52 38
Comfort Index™	3	5	3	3	1

Comfort Index takes into account how the weather will feel based on a combination of factors. A rating of 10 feels very comfortable while a rating of 0 feels very uncomfortable.

ALMANAC

TEMPERATURES	Baker City	La Grande	Elgin
High Thursday	43°	46°	48°
Low Thursday	30°	37°	38°
PRECIPITATION (inches)			
Thursday	0.00	0.00	0.00
Month to date	0.65	1.43	3.26
Normal month to date	0.60	1.61	2.55
Year to date	5.00	9.83	21.77
Normal year to date	8.08	15.19	21.58

AGRICULTURAL INFO.

HAY INFORMATION SUNDAY

Lowest relative humidity	45%
Afternoon wind	S at 6 to 12 mph
Hours of sunshine	0.1
Evapotranspiration	0.06

RESERVOIR STORAGE (through midnight Friday)

Phillips Reservoir	N.A.
Unity Reservoir	15% of capacity
Owyhee Reservoir	14% of capacity
McKay Reservoir	11% of capacity
Wallowa Lake	9% of capacity
Thief Valley Reservoir	6% of capacity

STREAM FLOWS (through midnight Thursday)

Grade Ronde at Troy	842 cfs
Thief Valley Reservoir near North Powder	0 cfs
Burnt River near Unity	16 cfs
Umattilla River near Gibbon	85 cfs
Minam River at Minam	126 cfs
Powder River near Richland	9 cfs

THURSDAY EXTREMES

NATION (for the 48 contiguous states)

High: 86° Oceanside, Calif.
Low: -9° Langdon, N.D.
Wettest: 3.15" Quillayute, Wash.

OREGON

High: 63° Bend
Low: 13° Lakeview
Wettest: 0.03" Astoria

WEATHER HISTORY

On Nov. 27, 1898, the famous "Portland" storm formed off Cape Cod, causing the loss of 200 lives. Many others were lost to the raging sea in 50 small vessels. Boston received more than a foot of snow.

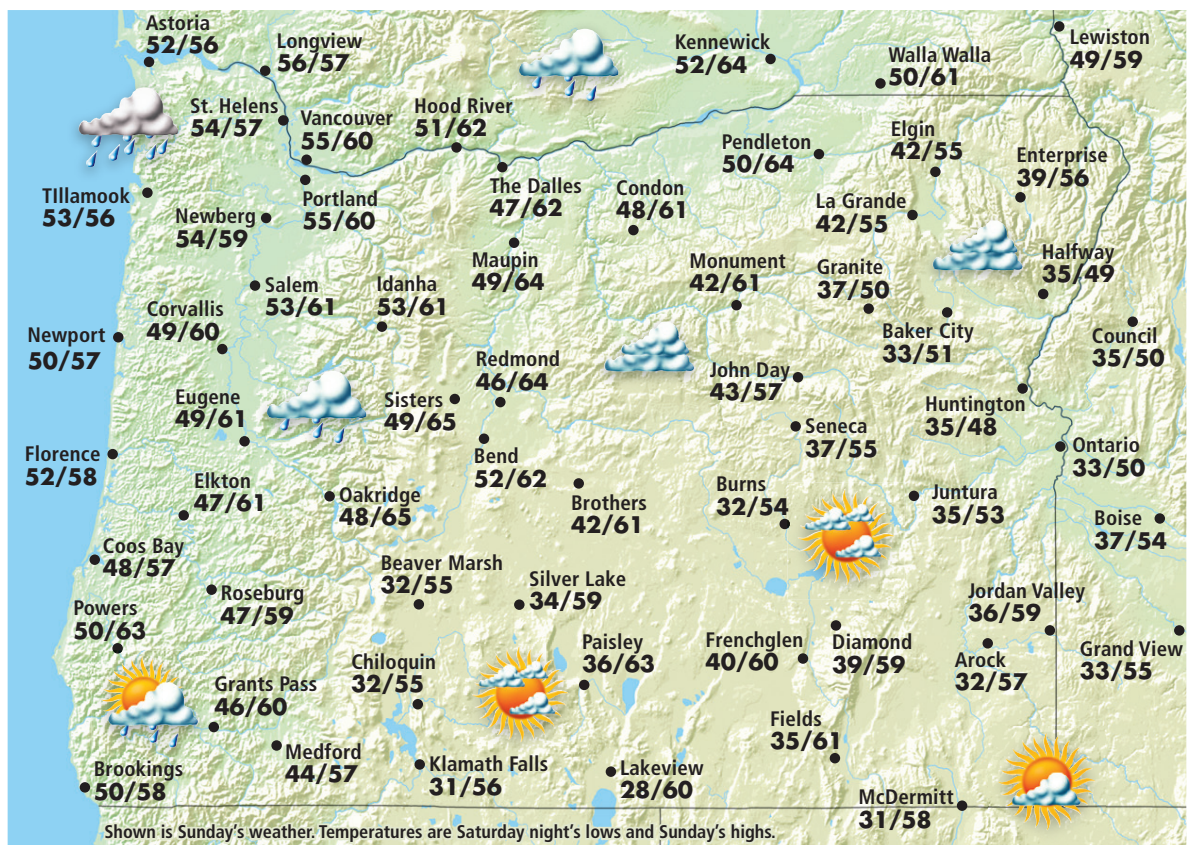
SUN & MOON

	SAT.	SUN.
Sunrise	7:07 a.m.	7:08 a.m.
Sunset	4:13 p.m.	4:12 p.m.
Moonrise	11:57 p.m.	none
Moonset	1:11 p.m.	1:32 p.m.

MOON PHASES

	Last	New	First	Full
	Nov 27	Dec 3	Dec 10	Dec 18

AROUND OREGON AND THE REGION



REGIONAL CITIES

City	SUN. HI/LO/W	MON. HI/LO/W	City	SUN. HI/LO/W	MON. HI/LO/W
Astoria	56/49/sh	55/48/r	Lewiston	59/47/c	52/40/c
Bend	62/43/pc	53/38/c	Longview	57/53/sh	56/50/r
Boise	54/35/pc	53/34/pc	Meacham	55/36/pc	46/34/c
Brookings	58/47/pc	57/46/c	Medford	57/41/pc	55/37/c
Burns	54/28/pc	52/24/pc	Newport	57/47/c	56/45/r
Coos Bay	57/48/c	58/43/c	Olympia	56/47/sh	53/46/sh
Corvallis	60/47/c	56/42/r	Ontario	50/32/pc	47/29/c
Council Bluffs	50/32/pc	46/31/c	Pasco	64/49/pc	57/42/c
Elgin	55/35/pc	46/33/c	Pendleton	64/46/pc	56/37/c
Eugene	61/48/c	56/44/c	Portland	60/53/c	57/48/r
Hermiston	62/48/pc	59/42/c	Powers	63/45/c	59/40/c
Hood River	62/49/c	59/46/r	Redmond	64/38/pc	56/35/c
Imnaha	60/43/c	52/37/r	Roseburg	59/45/c	58/41/pc
John Day	57/42/pc	51/38/pc	Salem	61/50/c	57/46/r
Joseph	56/39/pc	48/34/r	Spokane	54/44/c	50/41/sh
Kennewick	64/52/pc	58/42/c	The Dalles	62/46/pc	59/43/sh
Klamath Falls	56/26/pc	54/26/pc	Ukiah	56/38/pc	49/32/c
Lakeview	60/26/pc	56/23/pc	Walla Walla	61/46/pc	55/41/r

RECREATION FORECAST SUNDAY

ANTHONY LAKES Partly sunny	41 34	PHILLIPS LAKE Partly sunny	49 35
MT. EMILY REC. Partly sunny	47 39	BROWNLEE RES. Partly sunny; mild	56 36
EAGLE CAP WILD. Clouds and sun	41 28	EMIGRANT ST. PARK Partly sunny; mild	54 35
WALLOWA LAKE Partly sunny	56 39	MCKAY RESERVOIR Partly sunny	64 46
THIEF VALLEY RES. Sunny intervals	51 30	RED BRIDGE ST. PARK Clouds and sun	55 38

Weather(W): s-sunny, pc-partly cloudy, c-cloudy, sh-showers, t-thunderstorms, r-rain, sf-snow flurries, sn-snow, i-ice