

Eastern Oregon artists show work in Washington

EXHIBIT OPENS JUNE 5 AT CAVU CELLARS IN WALLA WALLA

WALLA WALLA — Five Eastern Oregon artists will be featured during June at Cavu Cellars in Walla Walla, Washington, 175 E. Aeronca Ave.

There will be an artist meet-and-greet reception Saturday, June 5, from 3-5 p.m.

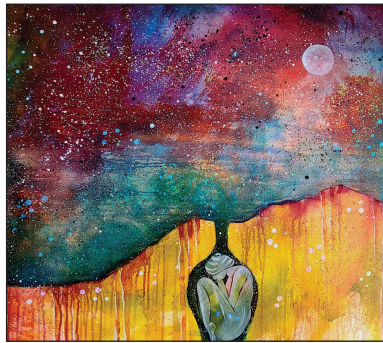
The featured artists are Janni Kerns of Haines, Sarah Fry of Baker City, Alicia Andrews of Burns, Sarah Greenman of Halfway and Mary Davies Kerns of Princeton.

The show runs until June 27. Cavu Cellars is open daily from 11 a.m. to 5 p.m.

Janni Kerns creates graphite drawing and watercolor paintings. She portrays animals and people in a spare style that captures the essence of her subject matter.

Sarah Fry uses paintings in a landscape format to communicate her ideas of place, home and familiarity. Fry often includes food, containers and other man-made objects in her landscapes, all the while asking, "Where do we fit in all of this?"

Alicia Andrews observes her surroundings and creates paintings that at first may seem like a collec-

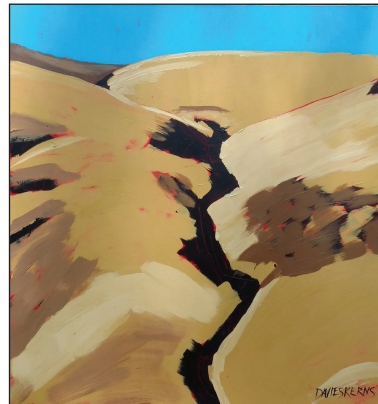


"The NotYet Stars" by Sarah Greenman

tion of divergent objects pleasingly arranged, but they also tell a story. Each unique creation contains pieces of her everyday life connected by a narrative in her head.

Sarah Greenman says that her work is deeply informed by place, by nature and by seasons and cycles that she weaves into her paintings, poems, plays and multi-layered creative offerings.

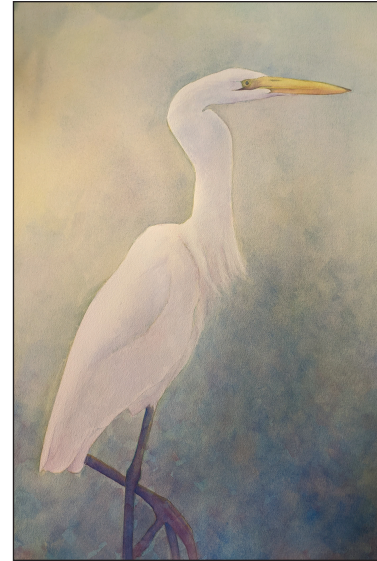
The paintings in Greenman's show are part of a series called "Startling Truth." The title comes from Maya Angelou's seminal poem "A Brave and Startling



"Field Crevice" by Mary Davies Kerns

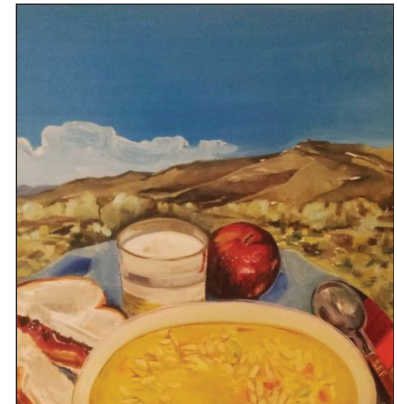
Truth." This selection of work is "a form of active prayer and also an expression of profound appreciation for the most foundational fact of human existence: that we are made of star stuff."

Mary Davies Kerns is a painter. Wide vistas of the high desert in Southeast Oregon dominates her subject matter. A full-time rancher, Mary also includes cattle, horses, working dogs, range sheep and ranch people in her paintings. In preparation for this show, she



"Egret" by Janni Kerns

was mesmerized by the rolling cropland. Much of her work "is a trimmed-down version, simplified, pared to the essential expression of farmed land and the geographic borders we must work around."



"Lunch with Johnny Appleseed" by Sarah Fry



"Live with It" by Alicia Andrews

Images contributed by Cavu Cellars



Heart 'n Home
HOSPICE

Experience CARE Like No Other!

Our highly-trained staff provides exceptional and compassionate care.

Call TODAY!
GoHOSPICE.com **(541) 624-5800**

Mark your Calendar!

Shelter From the Storm is having a Yard Sale.

June 12th: 8 am - 3 pm

Call for more info:
(541) 963-7226





We are located at:
10901 Island Ave
Island City

CENTER FOR HUMAN DEVELOPMENT

FREE COVID-19 VACCINES
NO INSURANCE NEEDED

WE ARE ADDING
CLINICS EVERY WEEK

Please visit
www.chdinc.org/gv
for more information
or call 541-962-8800

SUBSCRIBE

STAY INFORMED!

www.chdinc.org/subscribe

