

# Doctor husband is a poor patient for his nurse wife

**DEAR ABBY:** My physician husband recently had a total hip replacement. (Orthopedics is not his specialty.) I'm a board-certified registered nurse with 40 years of experience who used to work inpatient orthopedics. He refuses to follow the surgeon's directions or mine, which are the same. He believes he knows more than all of us combined. However, when the home health nurse and physical therapist came, he accepted everything they told him. When I told him he doesn't respect my professional opinion, he didn't respond. Then I told him he'd insulted my integrity, and he



**DEAR ABBY**

blew up and accused me of being crazy. History will soon repeat itself because he has to have his other hip done in a few months. I am at the point of letting the chips fall where they may and letting his outcomes (good or bad) be his sole responsibility. However, this is difficult to do as a wife and nurse. Plus, I will have to live with the fallout of any suboptimal outcomes. Your advice?  
— HIP SERVICE IN FLORIDA  
**DEAR HIP SERVICE:** Whether caused by a painful recovery or the drugs he has been prescribed, your hus-

band's behavior is self-defeating. Because he ignores your and his surgeon's advice, you have no choice but to let the chips fall where they may. You can suggest and warn until you're hoarse, and your husband will continue to tune you out. The person who will have to live with the consequences is your noncompliant husband.  
Allow me to offer a suggestion: Hire a nurse to tend to him after the second hip replacement and stay safely out of the line of fire. The peace of mind will be worth the money.  
**DEAR ABBY:** I have a niece who is bipolar. She was put into rehab at the age of 20 and has been clean and sober for the last

three years. We have always been close, but on a family visit, she asked my opinion about a job choice, and I was honest with her. Because it wasn't what she wanted to hear, she is extremely distant now. I am no longer "Auntie." She calls me by my first name only. Weekly calls have ceased.  
I have championed my niece, supported her emotionally when she had problems and helped her out financially. Her mother says if you don't agree with her (even though she solicits your opinion), you are then "against" her. What's the best way to reach out to her? Due to extreme drug abuse for many years, she seems emotionally stuck at age 14.  
— AUNTIE NO MORE

**DEAR AUNTIE:** With the clear understanding that I am not a psychotherapist, may I point out that some individuals who suffer from mental illness find it necessary to place people into two categories: friends and enemies. Disagreeing with your niece has landed you in the latter. Her mother has explained this to you, so try not to take it personally.  
I don't think this troubled young woman will be receptive to a reconciliation until she has found another target. In the meantime, remain open, stay cordial and fill your life with activities that bring you joy rather than pain. I'm sure her mother will update you on your niece's progress.

## NEWS OF THE WEIRD

### Free offices with a view: Four lighthouses, courtesy of feds

**PROVIDENCE, R.I.** — Dreading your eventual return to the office? The federal government is making available — for free — some waterfront workspaces with killer views that are sure to entice. But there's a catch.

The General Services Administration says the U.S. Coast Guard has decided it no longer needs four of the nation's most picturesque lighthouses, and it's inviting certain types of organizations to take them over at no cost.

The GSA, which has been getting rid of its large inventory of obsolete lighthouses, said Thursday, May 13, that Beavertail Lighthouse in Jamestown, Rhode Island — America's third-oldest lighthouse, and a beacon that defeated British forces torched out of spite in 1779 as they withdrew from the new nation — is up for grabs.

So are Watch Hill Light in Westerly, Rhode Island, not far from Taylor Swift's beachside mansion; Cleveland Harbor West Pierhead Light in Ohio; and Duluth Harbor North Pierhead Light in Minnesota.

Conditionally, that is: The government says it'll make the historic lighthouses and their outbuildings available free of charge to federal, state and local agencies; nonprofit organizations; educational and community development agencies; or groups devoted to parks, recreation, culture, or historic preservation.

Beavertail Light "has been determined to be



Stew Milne/Associated Press, File

Anglers in 2006 cast from the rocky shore at the Beavertail Lighthouse, the third-oldest lighthouse in America, on Narragansett Bay, in Jamestown, Rhode Island. The federal government announced the U.S. Coast Guard has decided it no longer needs four of the nation's most storied and picturesque lighthouses, including the Beavertail Lighthouse. The government says it'll make the historic lighthouses and their outbuildings available at no cost to federal, state and local agencies; nonprofit organizations; educational and community development agencies; or groups devoted to parks, recreation, culture or historic preservation.

excess to the needs of the United States Coast Guard," which is part of the Department of Homeland Security, GSA spokesperson Paul Hughes said in a statement.

Beavertail Light has been listed in the National Register of Historic Places since 1977. The 64-foot granite lighthouse faces south where Narragansett Bay and Rhode Island Sound meet, offering drop-dead-gorgeous ocean vistas.

All that remains of the original lighthouse is its foundation; it was constructed in 1749 and burned down by British soldiers in 1779. The lighthouse was built in 1856 along with six additional structures totaling 5,171 square feet.

Hughes said the government is asking groups to express their interest in the next 60 days, and the National Park Service will review the applications. Perched on a peninsula,

Watch Hill Light is a three-story granite block tower with a cast iron and glass lantern on top. It's attached to a two-story brick keepers dwelling built in 1935.

Cleveland Harbor West Pierhead Light, built in 1911 to guide ships in Lake Erie approaching the Port of Cleveland, housed a Coast Guard Station until 1976. It's best known for its annual transformation into a majestic ice castle when winter temperatures freeze the surf that sprays its facade.

Duluth Harbor North Pierhead Light, built in 1910 and perched at the westernmost tip of Lake Superior, also is listed on the National Register of Historic Places.

### Cat rescued from undercarriage of Isaac Yiadom's car

**FORT LAUDERDALE, Fla.** — Firefighters

in Florida were called to rescue a cat — not out of a tree, but from the undercarriage of a car owned by New York Giants cornerback Isaac Yiadom, officials said. Rescue workers responded to Yiadom's home Sunday morning, according to a Facebook post by the Fort Lauderdale Fire Department.

Firefighters jacked up the Maserati and partially disassembled the car to reach the small tabby, which was stuck above the rear differential. The cat didn't appear to be injured.

### Sherpa guide scales Mount Everest for record 25th time

**KATHMANDU, Nepal** — A Sherpa guide scaled Mount Everest for the 25th time on May 7, breaking his own record for the most ascents of the world's highest peak.



Niranjan Shrestha/Associated Press, File

Nepalese veteran Sherpa guide Kami Rita waves on May 20, 2018, as he arrives in Kathmandu, Nepal. Rita, 51, an ace Sherpa guide scaled, Mount Everest on May 7, 2021, for the 25th time, breaking his own record for the most successful ascents of the world's highest peak.

Kami Rita and 11 other Sherpa guides reached the summit at about 6 p.m., Department of Tourism official Mira Acharya said.

They are the first group of climbers to reach the summit this year and were fixing the ropes on the icy route so hundreds of other climbers can scale the peak this month.

Everest was closed to climbing last year on both its southern side, which is in Nepal, and its northern side, which is in China, because of the coronavirus pandemic. Nepal has issued climbing permits this year to 408 foreign climbers despite a surging COVID-19 outbreak.

China has opened the northern slope to only a few dozen mountaineers who will be tested for the coronavirus and must keep their distance while climbing.

Rita, 51, first scaled Everest in 1994 and has been making the trip nearly every year since then. He is one of many Sherpa guides whose expertise and skills are vital to the safety and

success of the hundreds of climbers who head to Nepal each year seeking to stand on top of the 29,032-foot mountain.

His father was among the first Sherpa guides, and Rita followed in his footsteps and then some. In addition to his 25 times to the top of Everest, Rita has scaled several other peaks that are among the world's highest, including K-2, Cho-Oyu, Manaslu and Lhotse.

He was at Everest's base camp in 2015 when an avalanche swept through, killing 19 people. After that tragedy, he came under intense family pressure to quit mountaineering, but in the end decided against it.

Forty-three teams have been permitted to scale Everest during this year's spring climbing season and will be assisted by about 400 Nepalese guides.

Each May, there are usually only a few windows of good weather at the summit during which climbers can attempt to scale the peak.

— Associated Press

AccuWeather | Go to AccuWeather.com

# weather

	TONIGHT	FRI	SAT	SUN	MON
	Overcast, a shower late	Cloudy with a few showers	Showers possible	Sun and clouds, a shower	Clouds and sun; warmer
<b>Baker City</b>	<b>37</b>	<b>52 36</b>	<b>53 35</b>	<b>60 37</b>	<b>67 37</b>
Comfort Index™	0	0	4	4	10
<b>La Grande</b>	<b>40</b>	<b>52 39</b>	<b>55 36</b>	<b>59 41</b>	<b>68 41</b>
Comfort Index™	0	0	4	4	10
<b>Enterprise</b>	<b>35</b>	<b>48 35</b>	<b>51 32</b>	<b>59 37</b>	<b>63 39</b>
Comfort Index™	0	0	3	8	10

Comfort Index takes into account how the weather will feel based on a combination of factors. A rating of 10 feels very comfortable while a rating of 0 feels very uncomfortable.

### ALMANAC

TEMPERATURES	Baker City	La Grande	Elgin
High Tuesday	61°	61°	65°
Low Tuesday	42°	44°	45°
PRECIPITATION (inches)			
Tuesday	0.00	Trace	0.00
Month to date	0.03	0.03	0.05
Normal month to date	0.81	1.14	1.27
Year to date	1.69	5.87	13.76
Normal year to date	3.86	6.95	10.96

### AGRICULTURAL INFO.

HAY INFORMATION FRIDAY	
Lowest relative humidity	55%
Afternoon wind	N at 8 to 16 mph
Hours of sunshine	4.1
Evapotranspiration	0.09

RESERVOIR STORAGE (through midnight Wednesday)	
Phillips Reservoir	18% of capacity
Unity Reservoir	94% of capacity
Owyhee Reservoir	52% of capacity
McKay Reservoir	98% of capacity
Wallowa Lake	60% of capacity
Thief Valley Reservoir	92% of capacity

STREAM FLOWS (through midnight Tuesday)	
Grande Ronde at Troy	6940 cfs
Thief Valley Reservoir near North Powder	117 cfs
Burnt River near Unity	134 cfs
Umatilla River near Gibbon	375 cfs
Minam River at Minam	1920 cfs
Powder River near Richland	42 cfs

### TUESDAY EXTREMES

NATION (for the 48 contiguous states)	
High: 109°	Death Valley, Calif.
Low: 24°	Bellmont, Ariz.
Wettest: 5.30"	Victoria, Texas
OREGON	
High: 79°	Rome
Low: 32°	Crater Lake
Wettest: 0.06"	Hillsboro

### WEATHER HISTORY

On May 20, 1982, Cincinnati's eastern suburb of Milford was swamped by 2.50 inches of rain in just a half of an hour. Cincinnati's average May rainfall is 4.07 inches.

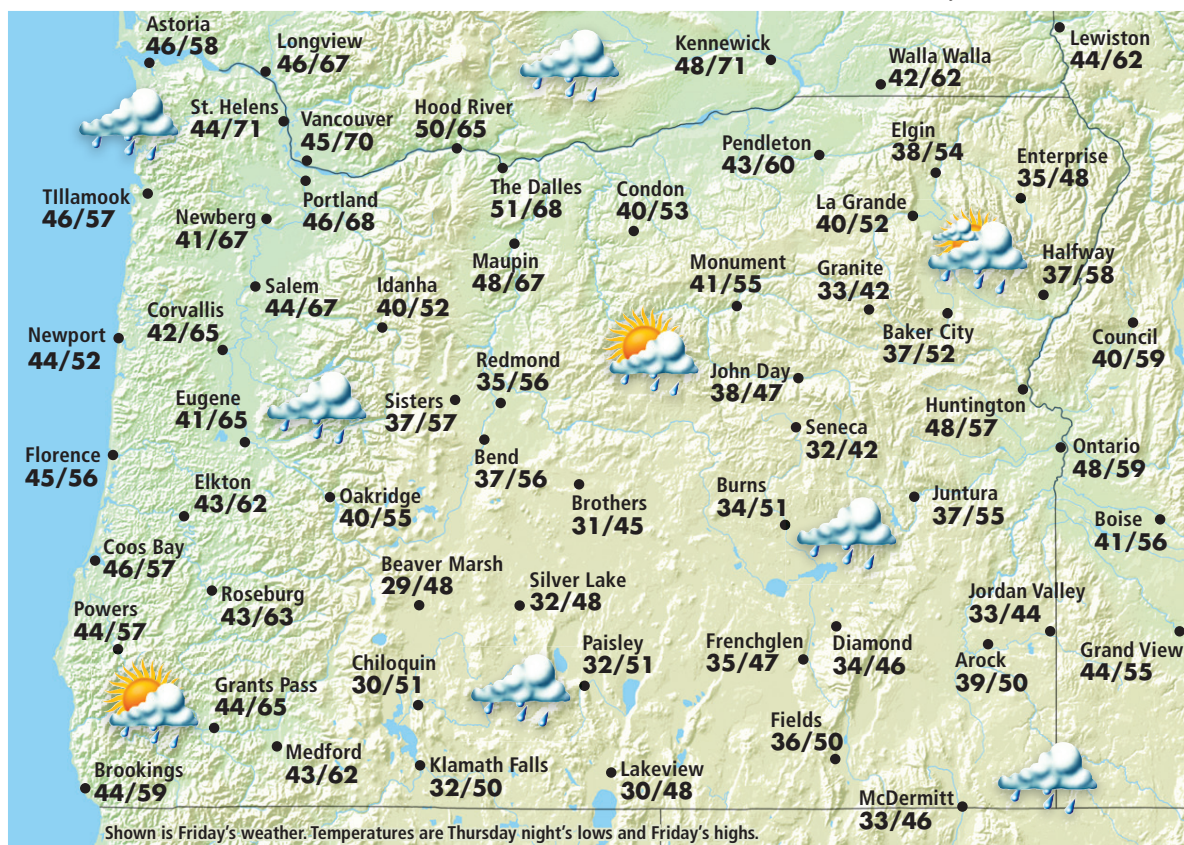
### SUN & MOON

	THU.	FRI.
Sunrise	5:17 a.m.	5:16 a.m.
Sunset	8:21 p.m.	8:23 p.m.
Moonrise	1:16 p.m.	2:31 p.m.
Moonset	2:39 a.m.	3:04 a.m.

MOON PHASES	Full	Last	New	First
	May 26	Jun 2	Jun 10	Jun 17

## AROUND OREGON AND THE REGION

Forecasts and graphics provided by AccuWeather, Inc. ©2021



### REGIONAL CITIES

City	FRI.		SAT.	
	Hi/Lo/W	Hi/Lo/W	Hi/Lo/W	Hi/Lo/W
Astoria	58/47/c	61/50/pc	Lewiston	62/44/sh
Bend	56/38/sh	51/37/pc	Longview	67/44/c
Boise	56/40/sh	60/41/pc	Meacham	53/39/sh
Brookings	59/45/pc	61/47/pc	Medford	62/46/c
Burns	51/36/c	50/34/pc	Newport	52/45/c
Coos Bay	57/45/pc	50/34/pc	Olympia	70/41/c
Corvallis	65/42/c	68/47/pc	Ontario	59/44/sh
Council Bluffs	59/37/sh	55/37/sh	Pasco	69/46/sh
Elgin	54/36/c	55/34/sh	Pendleton	60/43/c
Eugene	65/42/c	67/48/pc	Portland	68/48/c
Hermiston	69/49/sh	67/42/pc	Powers	57/47/pc
Hood River	65/51/sh	66/50/pc	Redmond	56/37/sh
Imnaha	53/41/sh	57/45/sh	Roseburg	63/47/c
John Day	47/39/sh	50/36/pc	Salem	67/44/c
Joseph	48/34/sh	49/32/sh	Spokane	59/44/sh
Kennewick	71/46/sh	69/43/pc	The Dalles	68/51/sh
Klamath Falls	50/35/c	55/33/pc	Ukiah	51/31/sh
Lakeview	48/33/sh	48/30/pc	Walla Walla	62/44/sh

Weather(W): s-sunny, pc-partly cloudy, c-cloudy, sh-showers, t-thunderstorms, r-rain, sf-snow flurries, sn-snow, i-ice

### RECREATION FORECAST FRIDAY

ANTHONY LAKES	PHILLIPS LAKE
Cold with flurries	Cold with a shower
<b>30 22</b>	<b>46 35</b>
MT. EMILY REC.	BROWNLEE RES.
Morning flurries	Spotty showers
<b>42 30</b>	<b>57 42</b>
EAGLE CAP WILD.	EMIGRANT ST. PARK
Cloudy and cold	Morning flurries
<b>36 27</b>	<b>48 32</b>
WALLOWA LAKE	MCKAY RESERVOIR
Morning flurries	Spotty showers
<b>48 34</b>	<b>59 42</b>
THIEF VALLEY RES.	RED BRIDGE ST. PARK
Windy	Spotty showers
<b>52 36</b>	<b>52 39</b>