

celebrity q&a

BY GEORGE DICKIE

Jimmy Akingbola

OF 'KATE & KOJI' ON BRITBOX



How was it working with Brenda Blethyn on "Kate & Koji"?

Brenda's like my best mate now. We had never met before. I'd been a big fan of her work over the years. But we had one lunch maybe three weeks before we started shooting and we just connected. It was so natural. She's an amazing pro. She's so generous and she's so naturally funny. A lot of people see like "Vera" and stuff ... she's done in America but she's so playful, it's ridiculous. And she's so good that everybody has to be on their A-game. But what I love about her is that ... she brings that theater company vibe to the whole show. So we laughed a lot, we worked hard, we had fun but it was that thing that we're all in it together.

You also worked with Jason Sudeikis on "Ted Lasso" How was it keeping up with him?

Jason's comic timing is impeccable. He's so free and natural, it's unbelievable. There are times where I realize that I can learn the lines but he trusts you to

sort of - I think it's like music - vibe with him, ad-lib with him. So you honor the script but he's very open to a bit of improvisation. But if you're going to improvise with Jason Sudeikis, you need to know your character inside out because he's just so in it. There are times where you're like, "Am I talking to Jason or am I talking to Ted?"

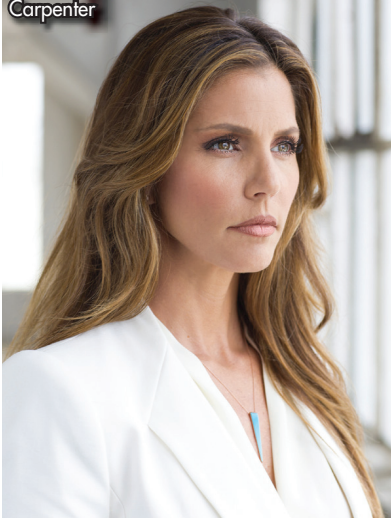
So you obviously have to be very attuned to your acting partner in that situation, correct?

Yeah, you do. ... I always remember working with Dustin Hoffman ... and we're just going off script just saying what we want to say, and Dustin's like, "Go on, Jimmy. Do it more, do it more!" And so with Jason, when actors give each other the eye like, "Yeah, let's play," it's the best thing ever. So with Jason, as long as you're honoring your character, you can just go anywhere. ... And to do it with someone as skillful and as funny as Jason, it's a great way to earn a living (laughs).

How rude!

triviaquiz
BY JOHN CROOK

Charisma Carpenter



Questions:

- 1) On the early seasons of this cult hit, Charisma Carpenter played vain cheerleader Cordelia Chase, who was constantly belittling the title character and her friends. Can you name the show?
- 2) On "The Beverly Hillbillies," banker Milburn Drysdale had a wife who spent most of her time snobbishly looking down her nose at the Clampetts. What was Mrs. Drysdale's first name?
- 3) "Ned and Stacey" featured which future "Sideways" co-star as caustic Ned Dorsey, an arrogant executive who frequently cut down his nearest and dearest?
- 4) Who played acerbic talk show host Bill Bittinger on the NBC sitcom "Buffalo Bill"?
- 5) Single mother Grace Kelly had to deal with hassles that included a rude mother-in-law constantly belittling her on what ABC sitcom?
- 6) What Emmy-winning actress played barracudalike political wife Margaret Powers on the NBC sitcom "The Powers That Be"?

- Answers:**
- 1) "Buffy the Vampire Slayer"
 - 2) Margaret
 - 3) Thomas Haden Church
 - 4) Dabney Coleman
 - 5) "Grace Under Fire"
 - 6) Holland Taylor

CENTER FOR HUMAN DEVELOPMENT

FREE COVID-19 VACCINES
NO INSURANCE NEEDED

WE ARE ADDING
CLINICS EVERY WEEK

SUBSCRIBE



Stay informed about COVID-19
vaccination distribution.

www.chdinc.org/subscribe

Let Your **GRADUATES'**
Accomplishments **SHINE!**

HONOR THE SENIOR IN YOUR LIFE

in this special way with a customized,
double-sided 18" x 24" yard sign,
constructed from corrugated plastic.

Order by May 5th and we'll deliver
to your door by May 21st!



Just
\$29 each
or 2/\$49

To place your order, contact Devi Mathson today!
Baker City Herald | THE OBSERVER
541-963-3161