

&gt;&gt;&gt; GO OUT, GO ONLINE

Art & fresh food support local  
producers, business owners

# Farmers markets revive health, local economy

LA GRANDE — The La Grande Farmers Market is now open for the season, with social distancing requirements and safety measures in place. The market is open 9 a.m.-noon on Saturday and 3-6 p.m. on Tuesday at Max Square, corner of Fourth Street and Adams Avenue.

One way the La Grande Farmers Market helps families access more fresh fruits and vegetables from local farmers is with Double Up Food Bucks. This program offers extra market money to SNAP (Supplemental Nutrition Assistance Program) participants when they buy fresh fruits, vegetables and edible plants from any vendor at the market. The program can help community members stretch their food budget by up to \$80 a month.

If you qualify for SNAP and shop at the market, each day you redeem funds from your SNAP account on these items, LGFM will match dollar for dollar up to a max of \$10 in free Double Up Food Bucks. Your SNAP funds can also be used at the market to purchase a wider variety of foods, including meat, eggs, baked goods, cheese, honey, canned goods, salsa, oils and vinegars, and coffee beans.

Using SNAP tokens and Double Up Food Bucks at the market gives you the power to purchase healthy and fresh groceries in a way that supports our local farmers, and keeps these funds in the local economy.

This year's market vendors are: Nella Mae's Farm, Kneads Bakery, Mia's Garden, Umapine Creamery, Dianne's Kitchen, Homestead Springs Farm & Forge, 2 Dog Flower Farm, 3rd Generation Farm, Giannes Fine Foods, Gardenia's Tamales, Brandt's Bakery, Evergreen



Family Farms, Regrowth Nursery, Ava Denton's Pastured Meat, Martinez Gardens, Key Family Farms and Aichele's Berries.

## WALLOWA COUNTY FARMERS MARKET

JOSEPH — Similar to the La Grande Farmers Market, the Wallowa County Farmers Market, held in Joseph on Saturdays, will look a little different this year. When the market opens this Saturday, May 23, there will still be plenty of fresh produce, jewelry, soap and flowers, but vendors and customers will be required to follow social distancing and other COVID-19 protocols.

Vendors and customers are strongly encouraged to wear masks or other facial coverings and must maintain a distance of 6 feet between themselves and others. Customers will not be allowed to bag or handle produce. A new handwashing station will be located at the market to help maintain and encourage hand sanitization practices. A staff member or volunteer from the market will be on site to remind customers of these requirements.

The market, which operates Saturdays from 9 a.m. to 2 p.m. next to Stein's Distillery on Main Street in Joseph, is following all state and local guidelines for the COVID-19 pandemic in accordance with best practices from the Oregon Farmers Markets Association and the Centers for Disease Control and Prevention. At this time, no music or special events are planned.

For more information, or to learn how to become a vendor, visit [www.wallowacountyfarmersmarket.com](http://www.wallowacountyfarmersmarket.com), call 541-838-0795 or email [wallowacountyfarmersmarket@gmail.com](mailto:wallowacountyfarmersmarket@gmail.com).



## PERFORM ART

2020 Auburn Avenue  
Baker City, OR 97814  
541.523.5369  
[info@crossroads-arts.org](mailto:info@crossroads-arts.org)  
[www.crossroads-arts.org](http://www.crossroads-arts.org)

## Auction, art benefit WC businesses

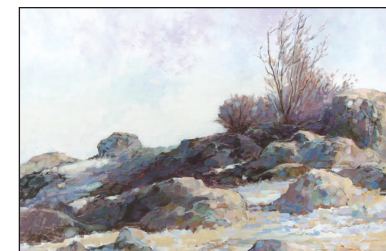
JOSEPH — To help support the Wallowa County Business Fund, the Josephy Center is having a silent auction of prints that will be featured in this summer's virtual exhibit, "Three Journeys: Mike Koloski, Leslie LeViner and Mary Edwards."

Each artist has selected a specific piece for the online auction. Bidding, which began May 18 and ends June 19, may be done at [www.josephy.org](http://www.josephy.org). Bids start at \$25 and can be raised in \$5 increments.

Also, Koloski is offering archival reproductions of his painting "Lostine River – The View from Pole Bridge" to donors who contribute their stimulus checks of \$1,200 to the business fund. The painting (on the cover of this edition of GO) was featured in the Lostine River Exhibition last summer, where it generated considerable interest and inquiries for purchase.

Contact [larz@wallowaresources.org](mailto:larz@wallowaresources.org) or [rick@wallowaresources.org](mailto:rick@wallowaresources.org) at Wallowa Resources with instructions on how to donate.

### BID ON THESE PRINTS



Mike Koloski — "Rock Art"



Leslie LeViner — "Spring Beneath Mt. Joseph"



Mary Edwards — "The Hurricane"

## Fire Boots Sale

Danner, Whites, Kenetrek, Zamberlan (able to order)

# \$30 off

for firefighters





2700 Bearco Loop  
La Grande  
541-963-8898

# GO

WEEKEND OUTLOOK



**FRIDAY**  
High 53 Low 32  
Spotty showers



**SATURDAY**  
High 62 Low 39  
Partly sunny



**SUNDAY**  
High 64 Low 41  
Clouds and sun