

DOYLE'S

Grants Pass, Oregon

Buy Your Summer Underwear NOW!

- Women's bodice top vests, swiss rib 15c
- Women's swiss rib vests, bodice or built up style 25c
- Women's union suits, low neck, sleeveless, knee length 49c
- Women's extra size unions, bodice top, tight knee, suit 65c
- Holeproof hose for women, pure silk in black, cordovan, log cabin, cloud \$1.00

Classified Advertising

FOR SALE

- FRESH EGGS**—From River Heights Poultry Farm. Sterile, graded, dated, at the Truxis Grocery, 821f
- FOR SALE**—One Harley-Davidson motorcycle and side car in first class condition. \$150. One 1923 Ford. Studebaker Agency. 20
- PACK HORSES** and pack outfits for sale. Corner 1 and 11th streets, near gas plant. 21
- FOR SALE**—Registered 8-month-old Poland China boar, also three gilts. Ernest Webb, Central Point. 21
- FOR SALE**—High grade ivory reed baby carriage. Price \$27.50. Call at 605 South Fifth St. 22
- FOR SALE**—Loganberries and black caps. Orders taken. R. C. Logan, Rt. No. 4, Box 3, So. Grants Pass. 29
- FOR SALE**—Span of mules, guaranteed to work any place, single or double, also harness. \$135 cash for quick sale. Frank Leone, Jerome Prairie. 24
- COW FOR SALE**—Good milker, Amos Smith, 1 1/2 miles south on highway. 20

REAL ESTATE

- SELLING OUT RANCHES** at bargain prices, 5 and 10 years' time. Ranches for rent and exchange. Gold Ray Realty Company, Medford, Oregon. 1f
- FOR SALE**—200 acre irrigated ranch bordering river and highway, 2 miles from Grants Pass. Sacrifice at \$10,000 on 10 years time, \$1000 per year. 6 per cent interest. Gold Ray Realty Co., Medford, Oregon. 61f
- FOR SALE OR TRADE**—7-room modern bungalow, close in. Will take good auto. Small amount of money will handle deal. Phone 508-R or call 707 South Fifth St. 93f
- FOR SALE**—By Crescent City Realty Company. A good dairy ranch of 153 acres in Smith River valley, Del Norte County, one hundred acres plow land, 25 dairy cows, 1 bull, 6 yearlings, 10 calves, 3 work horses and harnesses, 2 wagons, plow, harrows, mowing machine, hay fork, track, car, ropes and pulleys for filling barn with hay and all the necessary implements and tools for a first class dairy ranch. Thirty tons of hay goes with the ranch. Two barns with total capacity of 100 tons of hay worth \$4,000. New modern seven room dwelling, fireplace, bath, water piped from living spring and up to date in every particular, worth at least \$7,000. Small orchard on the place. Four miles from the town of Smith River and eleven miles from Crescent City. Price of ranch with stock, tools and implements, complete \$21,000, on easy terms, interest on deferred payments at 6 per cent.
- TEN ACRE RANCH**, all level plow land with house and small barn, less than three miles from Crescent City, \$2,000. This is good dairy land, not a stump on the place.
- TWENTY ACRE RANCH** all level plow land, house and barn, 2 1/2 miles from Crescent City, \$3,500. This is good dairy land.
- ONE HUNDRED ACRES** under plow, 3 miles from Crescent City, railroad on one side, county road on the other side, 1/4 mile from state highway, barn on place \$15,000. This ranch slopes gently toward the ocean and is less than a half mile from Crescent City bay. Terms: Six thousand dollars cash and balance on time at 6 per cent.
- THREE HUNDRED LOTS** in Ocean View Tract No. 1, two miles from Crescent City, at \$40 each on monthly payments. Good land and fine marine view. Crescent City is a growing town and you will do well to invest here. The above sub-division is within a mile of one of the best tracts of redwood timber in the world on one side and is within a mile from Crescent City bay on the other side. Never hot, never cold. Call on or address **CRESCENT CITY REALTY CO.** Crescent City, California 36
- FOR SALE**—40 acres river bottom land, one-half mile from Kerby, Ore., 8 acres clear, can be watered cheap, 25 of 40 can be cultivated. Call on or write owner for we can deal. Robert Inks, Kerby, Oregon. 57
- FOR SALE**—Good burro and saddle at Gravin's Feed Barn. 26
- FOR SALE**—5 acres on East D st., improved. House, outbuildings, family orchard, under ditch. Inquire 712 B St. 23

FOR RENT

- OFFICE ROOMS**—2 nice rooms for rent. Flanagan Bldg. 061f
- 4-ROOM COTTAGE**—For rent, furnished, water, 210 Foundry St., inquire 298 Foundry St. 23

WANTED

- WANTED**—Gas engine from 5 to 8 h. p. Centrifugal pump, 3-in. to 4-in. Pine, 3-in. to 4-in. Write Box 46. 21
- WANTED**—A first class man to build and open fireplace and chimney. Box 15, Wolf Creek, Ore. 21

MISCELLANEOUS

- WILL BUY**—For cash, household goods, large or small lots. C. F. T. Co. Phone 139-R. 34-f
- FOR FIRE** Extinguishers and refill fluid see Geo. S. Barton, Grants Pass, Oregon. 481f
- PIANOS TUNED**—Have your piano tuned while Mr. C. W. Klenke, of Portland, is on his regular trip to Grants Pass. Phone Rowell's Music Store, 126-J. 021f
- OWN YOUR OWN HOME**—A proposition that will interest you. I will furnish the lot and lumber you do the building to your own taste and the terms will be agreeable. A. L. Edgerton, phone 198-Y. 1f
- ALL EX-SERVICE MEN** suffering from illness or injury which is incident to their military service, or receiving government compensation, will be given medical or surgical attention or medicine at government expense. Consultation and information free. U. S. government cases only. E. J. Hilleck, M. D., physician and surgeon. For appointment phone 51-L. 21

PLUMBING

G. A. BRYAN—The Plumber. For sanitary plumbing and heating. Skilled labor only employed. We guarantee our work. Phone 306, 612 H Street. 1f

INSTRUCTION IN MUSIC

PIANO SCHOOL FOR BEGINNERS—Hattie Coleman Calvert, 511 North Fourth Street. Affiliated teacher National Academy of Music, Carnegie Hall, New York.

PROGRESSIVE PIANO SCHOOL

Clara Tuttle Fenton, 613 A. Street. State Accredited Teacher. Burrows Kindergarten Course, Mrs. J. J. Hansen, Accredited, 515 South Fifth Street.

STRAYED

ESTRAY—Black cow and calf, here at my place, since June 4. Owner may have same by calling, paying for this advertisement and pasture at 25c per day. Jacob Redding, south of Grants Pass. 20

PHYSICIANS AND SURGEONS

- C. B. MARKS, M. D.**, Practice limited to diseases of eye, ear, nose and throat. Phone 62.
- DOCTOR C. J. MOSER**, Physician and Surgeon. X-ray work. Office phone 182; Res. 48-R.
- DR. RALPH W. STEARNS**—Physician and surgeon. Special attention to surgery. Obstetrics and Diseases of women. Complete X-Ray equipment. Dental X-Ray. Phones, home, 21-Y; office 21-J.
- DR. W. F. RUTHERFORD**—Manual therapeutics. Office over Western Union. Res. 259-R; office 217-R.
- DR. A. A. MCBRIEN**, Physician and surgeon. Obstetrics, diseases of women, and children. All chronic diseases treated without the knife. Phone 262-Y or 275-R.

VETERINARY HOSPITALS

GRANTS PASS VETERINARY HOSPITAL—Dr. B. B. Griffenhagen, Vet. Surgeon. Corner 7th and M Sts. Phone 191-R.

VETERINARY SURGEON

DR. R. J. BESTUL—Veterinarian. Residence 838 Washington boulevard. Phone 395-R.

DR. R. B. GRIFFENHAGEN, Veterinarian. Office 7th and M St. phone 191-R.

BUILDING CONTRACTORS

HARPER & SON—Building contractors. Shop work, furniture crating. Shop 417 G St., Phone 142-J.

NOTICE OF SALE OF GOVERNMENT TIMBER

General Land Office, Washington, D. C., May 15, 1924. Notice is hereby given that subject to the conditions and limitations of the acts of June 9, 1916 (39 Stat., 215), February 26, 1919 (40 Stat., 1179), and June 4, 1920 (41 Stat., 758), and departmental regulations of April 14, 1924, the timber on the following lands will be sold July 7, 1924, at 10 o'clock a. m. at public auction at the United States land office at Roseburg, Oregon, to the highest bidder at not less than the appraised value as shown by this notice, sale to be subject to the approval of the Secretary of the Interior. The purchase price, with an additional sum of one-fifth of 1 per cent, thereof, being commissions allowed, must be deposited at time of sale, money to be returned if sale is not approved, otherwise patent will issue for the timber which must be removed within ten years. Bids will be received from citizens of the United States, associations of such citizens and corporations organized under the laws of the United States, or any state, territory, or district thereof only. Upon application of a qualified purchaser the timber on any legal subdivision will be offered separately before being included in any other of a larger unit.

T. 27 S., R. 11 W., Sec. 7, Lot 3, red fir 3490 M., hemlock 65 M., NE 1/4 SW 1/4 red fir 1280 M., white fir 100 M., NW 1/4 SE 1/4 red fir 2550 M., hemlock 50 M., SE 1/4 SE 1/4 red fir 2850 M., hemlock 50 M., none of the timber on these tracts to be sold for less than \$2.50 per M., for the red fir, and \$5.00 per M. for the white fir and hemlock. T. 29 S., R. 10 W., Sec. 35, SW 1/4 SW 1/4 yellow fir 420 M., second growth red 80 M., white fir 40 M., white cedar 240 M., SE 1/4 SW 1/4 yellow fir 170 M., second growth red 200 M., white fir 50 M., white cedar 100 M., NW 1/4 SE 1/4 yellow fir 140 M., second growth red 240 M., white cedar 40 M., SW 1/4 SE 1/4 yellow fir 200 M., second growth red 80 M., white cedar 40 M., Lot 6 yellow fir 250 M., white fir 20 M., white cedar 130 M., Lot 7 yellow fir 70 M., second growth red fir 140 M., white cedar 120 M., T. 29 S., R. 11 W., Sec. 25, Lot 1 red fir 1340 M., white cedar 225 M., Lot 2 red fir 175 M., white cedar 125 M., Lot 5 red fir 1200 M., white cedar 75 M., Lot 8 red fir 225 M., white cedar 150 M., Lot 9 red fir 600 M., white cedar 250 M., Lot 15 red fir 2740 M., white cedar 40 M., Lot 16 red fir 1500 M., white cedar 200 M. None of the timber on these sections to be sold for less than \$2.00 per M. for the red and yellow fir, \$1.00 per M. for the second growth fir, \$5.00 per M. for the white fir and \$7.00 per M. for the white cedar. T. 39 S., R. 8 W., Sec. 9, Lot 6 yellow pine 75 M., not to be sold for less than \$3.00 per M., T. 17 S., R. 1 W., Sec. 1, Lot 1 fir 1600 M., Lot 2 fir 1700 M., SE 1/4 NE 1/4 fir 1250 M., SW 1/4 NE 1/4 fir 1700 M., NE 1/4 SE 1/4 fir 950 M., hemlock 50 M., NW 1/4 SE 1/4 fir 1225 M., SE 1/4 SE 1/4 fir 1125 M., hemlock 150 M., SW 1/4 SE 1/4 fir 1400 M., none of the timber on this section to be sold for less than \$1.50 per M. for the fir and \$1.00 per M. for the hemlock. T. 21 S., R. 3 W., Sec. 29, NW 1/4 NW 1/4 fir 750 M., SW 1/4 NW 1/4 fir 700 M., NW 1/4 SW 1/4 fir 400 M., none of the timber on these tracts to be sold for less than \$1.75 per M., T. 15 S., R. 6 W., Sec. 9, NE 1/4 SW 1/4 fir 920 M., NW 1/4 SW 1/4 fir 1620 M., SE 1/4 SW 1/4 fir 500 M., SW 1/4 SW 1/4 fir 1300 M., cedar 25 M., none of the timber on this section to be sold for less than \$1.75 per M. for the fir and \$1.00 per M. for the cedar. T. 28 S., R. 12 W., Sec. 13, Lot 2, red fir 350 M., Sec. 17 NE 1/4 NE 1/4 red fir 1240 M., white fir 820 M., cedar 50 M., NW 1/4 NE 1/4 red fir 740 M., white fir 450 M., cedar 20 M., SE 1/4 NE 1/4 red fir 2950 M., white fir 1340 M., cedar 20 M., SW 1/4 NE 1/4 red fir 850 M., white fir 490 M., cedar 60 M., spruce 40 M., NE 1/4 SE 1/4 red fir 2960 M., white fir 600 M., hemlock 70 M., NW 1/4 SE 1/4 red fir 900 M., white fir 440 M., cedar 60 M., SE 1/4 SE 1/4 red fir 2900 M., white fir 170 M., cedar 20 M., hemlock 70 M.,

SW 1/4 SE 1/4 red fir 1280 M., white fir 310 M., T. 17 S., R. 7 W., Sec. 33, SE 1/4 NW 1/4 red fir 2100 M., none of the timber on these sections to be sold for less than \$2.50 per M. for the red fir, \$5.00 per M. for the white fir and hemlock, and \$2.00 per M. for the cedar and spruce. T. 27 S., R. 12 W., Sec. 35, NW 1/4 NW 1/4 red fir 625 M., SE 1/4 NW 1/4 red fir 850 M., SW 1/4 NW 1/4 red fir 1550 M., NE 1/4 SW 1/4 red fir 1250 M., T. 31 S., R. 12 W., Sec. 7, NE 1/4 NE 1/4 red fir 800 M., white cedar 300 M., white fir 75 M., NW 1/4 NE 1/4 red fir 225 M., white cedar 600 M., white fir 200 M., red cedar 50 M., SE 1/4 NE 1/4 red fir 420 M., white cedar 120 M., SW 1/4 NE 1/4 red fir 645 M., white cedar 270 M., NE 1/4 NW 1/4 red fir 1150 M., white cedar 450 M., white fir 250 M., red cedar 25 M., SE 1/4 NW 1/4 red fir 900 M., white cedar 175 M., white fir 50 M., red cedar 50 M., Lot 1 red fir 1000 M., white cedar 300 M., white fir 25 M., Lot 3 red fir 350 M., white cedar 130 M., Lot 4 red fir 265 M., white cedar 60 M., NE 1/4 SW 1/4 red fir 330 M., white cedar 20 M., SE 1/4 SW 1/4 red fir 325 M., white cedar 300 M., white fir 30 M., NE 1/4 SE 1/4 red fir 630 M., white cedar 420 M., NW 1/4 SE 1/4 red fir 370 M., white cedar 45 M., SE 1/4 SE 1/4 red fir 960 M., white cedar 690 M., SW 1/4 SE 1/4 red fir 1075 M., white cedar 325 M., Sec. 5, SW 1/4 NW 1/4 red fir 590 M., white cedar 30 M., NW 1/4 SW 1/4 red fir 320 M., white cedar 135 M., SW 1/4 SW 1/4 red fir 300 M., Sec. 8, NE 1/4 NW 1/4 red fir 2050 M., white cedar 475 M., NW 1/4 NW 1/4 red fir 1675 M., white fir 25 M., white cedar 400 M., SE 1/4 NW 1/4 red fir 1525 M., white fir 100 M., white cedar 625 M., SW 1/4 NW 1/4 red fir 1175 M., white cedar 160 M., none of the timber on these sections to be sold for less than \$2.25 per M., for the red fir and red cedar, \$5.00 per M., for the white fir and \$7.00 per M. for the white cedar. T. 20 S., R. 4 W., Sec. 15, SW 1/4 NE 1/4 red fir 750 M., white fir 50 M., incense cedar 100 M., not to be sold for less than \$1.75 per M., for the red fir and \$5.00 per M. for the white fir and incense cedar. T. 15 S., R. 2 W., Sec. 35, SE 1/4 NE 1/4 red fir 1400 M., NE 1/4 SE 1/4 red fir 1550 M., red cedar 100 M., hemlock 50 M., NW 1/4 SE 1/4 red fir 2000 M., red cedar 30 M., hemlock 20 M., T. 16 S., R. 2 W., Sec. 3, Lot 2 red fir 1760 M., incense cedar 25 M., SW 1/4 NE 1/4 red fir 1215 M., incense cedar 15 M., NW 1/4 SE 1/4 red fir 1070 M., red cedar 40 M., none of the timber on these sections to be sold for less than \$1.75 per M., for the red fir, and \$1.00 per M. for the red and incense cedar and hemlock. T. 35 S., R. 3 E., Sec. 5, fir. NE 1/4 NE 1/4 pine 440 M., red fir 700 M., white fir 130 M., red cedar 10 M., fir. NW 1/4 NE 1/4 pine 10 M., red fir 1050 M., white fir 90 M., red cedar 50 M., SW 1/4 NE 1/4 pine 40 M., red fir 1190 M., white fir 90 M., red cedar 40 M., SE 1/4 NE 1/4 pine 280 M., red fir 800 M., white fir 50 M., red cedar 90 M., fir. NE 1/4 NW 1/4 pine 100 M., red fir 750 M., white fir 50 M., red cedar 30 M., fir. NW 1/4 NW 1/4 pine 170 M., red fir 770 M., red cedar 30 M., SE 1/4 NW 1/4 pine 90 M., red fir 800 M., white fir 40 M., red cedar 50 M., SW 1/4 NW 1/4 pine 120 M., red fir 890 M., white fir 20 M., red cedar 80 M., NE 1/4 SW 1/4 pine 220 M., red fir 670 M., white fir 40 M., red cedar 40 M., NW 1/4 SW 1/4 pine 310 M., red fir 960 M., white fir 50 M., SE 1/4 SW 1/4 pine 400 M., red fir 1040 M., white fir 20 M., red cedar 50 M., SW 1/4 SW 1/4 pine 390 M., red fir 450 M., white fir 20 M., red cedar 10 M., NE 1/4 SE 1/4 pine 110 M., red fir 1310 M., white fir 100 M., red cedar 140 M., NW 1/4 SE 1/4 pine 190 M., red fir 1140 M., white fir 120 M., red cedar 60 M., SE 1/4 SE 1/4 pine 470 M., red fir 500 M., white fir 20 M., red cedar 100 M., SW 1/4 SE 1/4 pine 180 M., red fir 1100 M., white fir 50 M., red cedar 40 M., not to be sold for less than \$3.50 per M. for the pine, \$1.50 per M. for the red fir, and cedar, and \$1.00 per M. for the white fir, Sec. 17, SW 1/4 NW 1/4 pine 485 M., red fir 135 M., white fir 85 M., NW 1/4 SW 1/4 pine 110 M., red fir 625 M., white fir 90 M., SW 1/4 SW 1/4 pine 355 M., red fir 480 M., white fir 70 M., NE 1/4 SE 1/4 pine 565 M., red fir 390 M., white fir 65 M., NW 1/4 SE 1/4 pine 340 M., red fir 390 M., white fir 30 M., SE 1/4 SE 1/4 pine 165 M., red fir 790 M., white fir 65 M., SW 1/4 SE 1/4 pine 70 M., red fir 835 M., white fir 65 M., Sec. 19, NE 1/4 NE 1/4 pine 400 M., red fir 260 M., white fir 30 M., not to be sold for less than \$2.75 per M., for the pine, \$1.50 per M. for the red fir, and \$1.00 per M. for the white fir. T. 32 S., R. 6 W., Sec. 17, NW 1/4 SE 1/4 pine 150 M., fir 445 M., cedar 20 M., not to be sold for less than \$2.50 per M. for the pine and \$1.25 per M. for the fir and cedar. T. 18 S., R. 6 W., Sec. 5, SE 1/4 SE 1/4 fir 540 M., T. 30 S., R. 12 W., Sec. 29, NW 1/4 NW 1/4 fir 165 M., white cedar 170 M., NE 1/4 NW 1/4 fir 250 M.,

white cedar 65 M., none of the timber on these tracts to be sold for less than \$2.00 per M. for the red fir and \$7.00 per M. for the white cedar. T. 29 S., R. 11 W., Sec. 1, Lot 3 red fir 180 M., white cedar 150 M., NE 1/4 SW 1/4 red fir 800 M., white cedar 300 M., NW 1/4 SW 1/4 red fir 320 M., white cedar 380 M., Sec. 13, Lot 12, red fir 300 M., white cedar 245 M., red cedar 20 M., white fir 10 M., Lot 13 red fir 620 M., white cedar 35 M., white fir 105 M., none of the timber on these sections to be sold for less than \$1.50 per M. for the red fir and red cedar, \$7.00 per M. for the white cedar and \$1.00 per M. for the white fir. T. 28 S., R. 4 W., Sec. 35, NW 1/4 SW 1/4 fir 275 M., not to be sold for less than \$1.50 per M., T. 36 S., R. 5 W., Sec. 31, Lot 4, yellow pine 10 M., sugar pine 300 M., fir 15 M., not to be sold for less than \$3.00 per M. for the pine and \$1.00 per M. for the fir. WILLIAM SPRY, Commissioner, General Land Office

Early Cotton Planting

The history of cotton production in the United States is the history of millions of people. It is the story of pioneers who created colonies, fought savage tribes, and laid out plantations. Fourteen years after the colonists settled at Jamestown, cotton was planted at Newport News.—Nature Magazine.

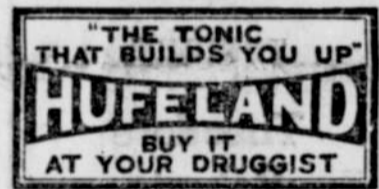
Gasoline represents 45 per cent of the value of all petroleum produced.



PILES

EXPERIENCE AND GUARANTEE
A specialist I have yet to treat the case of Piles that will not give way to my non-surgical treatment. Hence, my unqualified GUARANTEE of CURE or FEE REFUNDED. My assistants are the most skillful to be found; my new offices in my own building, the largest and best equipped; my own new hotel, which adjoins, is convenient and comfortable for out of town patients who come to me from many states and Canada for rectal and colon treatments.

Send today for my FREE illustrated book.
CHAS. J. DEAN, M.D. Inc.
5TH AND MAIN—OPPOSITE COURT HOUSE
PORTLAND, OREGON
MENTION THIS PAPER WHEN WRITING



"THE TONIC THAT BUILDS YOU UP" HUE LAND BUY IT AT YOUR DRUGGIST

TWO TO-NIGHT
for loss of appetite, bad breath, coated tongue, biliousness. Without gripping or nausea. **CHAMBERLAIN'S TABLETS** Set your liver right—only 25c

MINE AND MILL SUPPLIES

Machinery and Heavy Hardware
P. S. WOODIN
Phone 42 511 H St.

Why not use a good majority of the money for your new home for better plumbing? The content and health of your family are at stake. Let us demonstrate our superior supplies and plumbing abilities.
G. A. BRYAN
Plumbing and Heating
512 H St. Phone 306

Travel by Motor Stage

Safely, Swiftly and Comfortably

NORTHBOUND FROM GRANTS PASS

- Daily to Portland 9:15 a. m.
 - Daily to Eugene 2:30 p. m.
 - Daily to Roseburg 6:30 p. m.
- 2:30 and 6:30 p. m. Stages connect to Portland following morning.

SOUTHBOUND FROM GRANTS PASS

- Daily to Klamath Falls 12 Noon
- Daily to Ashland 4:00 p. m.
- Daily to Ashland 8:05 p. m.

We take passengers for all way points. For further information and tickets call Bonbonniers, phone 160.

FARE GRANTS PASS-PORTLAND \$7.05

Direct Connections at Roseburg for Coos Bay Points.

NEW AND DELIGHTFUL FROCKS FOR AFTERNOONS



AS WELCOME as the flowers in May—and almost as varied—are the lovely afternoon frocks that come trooping in at the same time. They are the beloved garments that reflect our joy in the good old summertime, and they do it by means of many dainty, colorful fabrics. Some of these are not used at any other season—so that there is great diversity of style and beauty in summer frocks for leisure hours. Crepe de chine and other crepes, foulard and various printed silks, taffeta, satin, georgette, lace net, organdie and voile, together with novelty fabrics, make up the inspiring company of mediums used for gowns that are also greatly varied in design.

Among delightful new arrivals there are black satin models in straightline frocks, finished off with collars and necks of white organdie. Deep yokes of ecru or cream lace and long inserted panels of lace, with black satin one-piece dresses have scored a wonderful success since their recent coming out. In the sheerer materials like georgette and crepe de chine simple, straightline dresses are given distinction by rows of tucks, an inch or more wide, that cover skirts and tunics; or scant, overlapping ruffles, about three inches wide and having pleated edges, may answer the same purpose. Plaitings, in tiers and panels, are featured in frocks made of the soft crepes where those of printed silk seem to inspire their designers to indulge in draperies. Sleeves appear to know no middle ground—they either come just a little way down over the top of the arm, or go its entire length. One of the long-sleeved models is pictured.

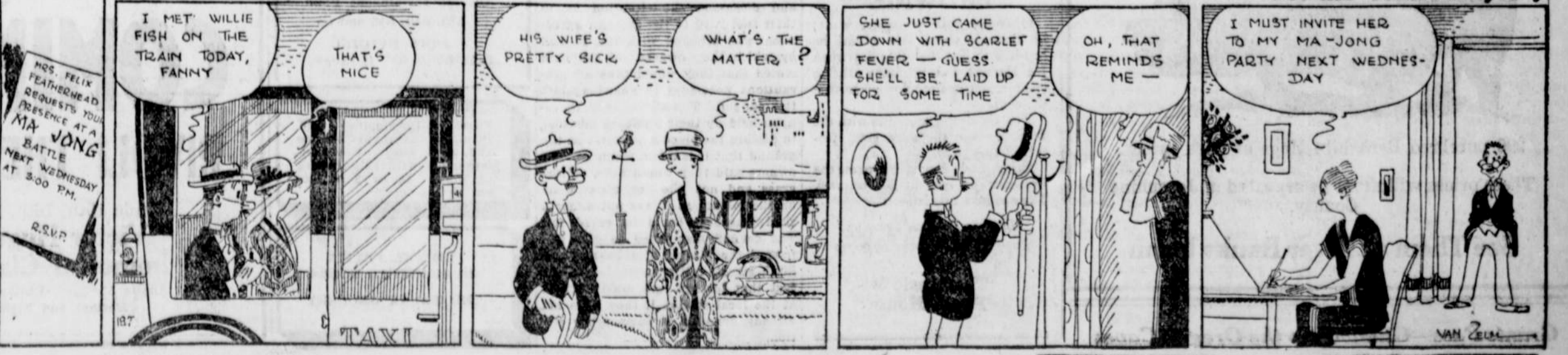
Two fabrics are combined in this dignified model—a plain and an embroidered crepe. The movement toward fuller skirts is to be noted in the shirred apron front, bordered with the embroidered crepe. Back of this there are panels of the same material, which also serves to make the front of the bodice and the deep, flaring cuffs on the sleeves. A girde of plain crepe is provided with a telling color note in the handsome beaded ornament placed at the front. Both narrow and wide beaded girdles are important in afternoon and evening modes and an elaborate girde (beaded or otherwise) lifts an unpretentious frock into the formal class.

JULIA BOTTOMLEY.
(© 1924, Western Newspaper Union.)

Woman Painter Honored
Mrs. A. L. Swynnerton, whose painting, "Now-risen Hope," has been purchased by the Royal academy, was elected a member of the academy in 1922, when she was over seventy-five years of age. She was the first woman in over a century to be so honored.

Only in Australia
The bower bird is found only in Australia. His nearest relative in our country is the starling, a black bird with a metallic gloss and with spots of yellowish-white among his feathers. The starling is more friendly than his Australian cousin.—Nature Magazine.

AW, WHAT'S THE USE



Get the Credit Anyway