



### Figure This Out

#### Electricity is the Cheapest Power You can Buy

Electricity is no longer a luxury to be enjoyed by the few. It is now within the reach of the many. Read the following figures based on the average rates for electric current.

**A nickel's worth of electricity will:**

- Run a 12 in. fan for 16 hrs.
- Run a sewing machine motor for 10 hrs.
- Play an electric piano for 5 hrs.
- Pump 500 gallons of water 100 ft. high
- Clip 3 horses, groom 5 horses
- Grind 2 1/2 bushels of ear corn
- Crack 10 bushels of corn
- Grind 7 1/2 bushels of barley
- Grind 200 lbs. of sausage
- Clean 2500 sq. feet of carpet
- Churn 50 lbs. of butter
- Separate 5000 lbs. of milk
- Milk 25 cows
- Operate grindstone for 16 hrs.

and do many other useful things.

Let us show you where electricity will help YOU.

**CALIFORNIA-OREGON POWER COMPANY**

108-J 623 G STREET, GRANTS PASS, OREGON

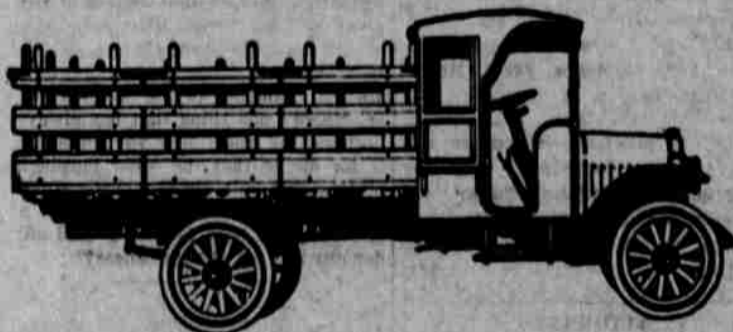
**Let the Cows Have Music.**  
We have it on the authority of a farmer in the state of Wisconsin that cows to which the phonograph, or gramophone, has been played while they are being milked have given two quarts of milk a day more than they ever did before. Professor Barker remarks upon this that cows will do a lot better if they are entertained and amused, and that a great deal depends upon their mood.—London Tit-Bits.

**Touching on Courtship.**  
Touching courtship in other days, several Romeos contribute to column levity of the hour. One asks: "Remember the time you had her out buggy riding and she asked you if you liked buckwheat or corn cakes best, and you asked her why she wanted to know, and she stuttered, 'B-e-c-a-u-s-e, and you both tittered, eh?'"—Pittsburgh Post.

**CHICHESTER'S PILLS**  
THE DIAMOND BRAND  
SOLD BY DRUGGISTS EVERYWHERE

Switzerland can remain neutral and imported limburger—cling to Hunland, but Tillamook will see to it that the fighters for democracy go not cheeseless. The Southern Pacific hauled close to 5,000,000 pounds of cheese out of Tillamook in 1917 and the county collected over \$1,000,000. The industry is now so well established and conducted on such a sanitary and scientific basis that Tillamook cows work overtime willingly and the international cheese record for 1918 is in sight.

75% of all hauling can be done by a Maxwell truck



**MAXWELL TRUCK**

There are now more than 6600 Maxwell trucks in use. They will do everything a 5-ton truck will do except haul 5 tons at one load. Big trucks spend more gas hauling themselves than the Maxwell uses at peak load. How well those Maxwells have done their work is shown by a service record of 99.6% perfect—the greatest record ever made by a motor-driven vehicle. \$400 less than any other truck of similar capacity in the world. \$1085, chassis only, f. o. b. Detroit. Electric lights. Electric generator. Worm drive. 10-foot loading space. 2500 pounds.

**COLLINS AUTO CO.**  
DISTRIBUTORS

### JUDGE C. G. GILLETTE EXPLAINS POSITION

Grants Pass, Oregon, March 22, 1918.

TO THE EDITOR OF THE COURIER:

Unfortunately under the laws of the state of Oregon, a public official has no recourse in a court of justice and any irresponsible parties may set up a complaint. I take this method of answering the allegations that have been made against me as county judge.

Upon my taking the office January 1, 1915, the county clerk's records show that there were outstanding general fund warrants to the amount of \$243,007.51, with estimate accrued interest to the amount of \$25,000.00, making a total outstanding indebtedness of \$267,007.51. The report of January 1, 1915, shows in general fund warrants \$201,051.85, with estimated accrued interest of \$49,203.45, making a total of \$250,255.30. Our warrants at that time were being discounted at the rate of five and ten per cent. Previous to this time no provision had ever been made by any county court to take care of the interest or outstanding warrants. In addition to this, the supplies for the county purchased from the local merchants were not only charged with the retail price, but the rate of discount as well was added. This state of affairs continued for one year. After much consideration, the other members of the county court were persuaded that a sinking fund should be created to take care of the interest and outstanding warrants also a current expense fund to provide for the conduct of the county business. This action had the hearty approval of the executive committee of the taxpayers league. As a result of this procedure, our warrants are today being eagerly sought at par.

In the matter of handling the county poor—this has been done by the county court as a whole and not by the county judge alone. This business has been carried on to the best of our ability under the conditions and circumstances with which we had to contend. We know that it is a matter of large expense but the laws of the state of Oregon provide that the county court shall care for the poor and destitute and in so doing we believe that they should have sufficient clothing and good, wholesome food. After two years' experience, the court decided to advertise for contracts for the maintenance of the county poor farm and its inmates. Four bids were received, two for \$30 per capita per month and two for \$22 per capita per month. The contract for the care of the county poor was then let for \$22 per capita per month. As a matter of comparison we might mention that the cost of maintaining the poor in Marion county in 1916 was more than \$24 per patient. A comparison of conditions in our adjoining counties will prove quite as favorable to Josephine county.

In regard to the water master, the county court has no jurisdiction in the matter as this is a state appointment and controlled by the state water master. The county court's responsibility extends merely to the paying of bills as authorized by the state water master. On recommendation of the county court to the state water master that a water master be employed but five months of the year, that official ruled that he must be employed not less than six months of the year, which plan is now in force. No salary has been paid in the water master's office since the middle of November.

At the last meeting of the county court the commissioners and county judge, with the approval of the executive committee of the taxpayers league, decided that it was for the best interest of Josephine county to purchase the machines that are now a matter of controversy. Since the use of automobiles are becoming so general the county has annually paid out more than the price of a Ford for auto hire.

In conclusion, I will say that had an investigation been made by any committee of responsible citizens of the county and they found it was to the best interests of Josephine county and so requested, I would have stepped aside without a word. Coming from the source it did, which source I will reveal if necessary; I propose to defend my administration before the voters of Josephine county until the same is vindicated and the untruthfulness of these charges fully established.

Respectfully,  
C. G. GILLETTE,  
County Judge.

### At the Churches

**Catholic Church**

Masses on Sunday at 8 and 10 a. m. Edmund A. Wall, pastor

**First Church of Christ Scientist**  
Christian Science services are held every Sunday, in the W. O. W. hall, at 11 a. m. Wednesday evening meetings at 8 o'clock. The subject for today is, "Matter." The reading room is open from 2 to 4 p. m. except Sundays and holidays. The public is cordially invited to attend the services and to visit the reading room.

**St. Luke's Episcopal**

Palm Sunday—Sunday school at 9:30 a. m. Evening prayer and sermon at 7:30 p. m. Rev. Philip K. Hammond of Ashland, vicar in charge. A hearty welcome is extended to all at these services.

**Christian Church**

Church school at 10 a. m., Dr. Macy, superintendent. We are putting parts of our school on a systematic graded basis. This training department is a real contribution to this community. Communion at 11 followed by sermon, subject, "Christian Correspondence." A splendid Junior has been organized and meets at 3 p. m. C. E. at 5:30. Evening service at 7:30, subject, "A Mighty Magnet." This church stands for service to the community and is desirous of having a part in every good work.

Charles R. Drake, minister.

**Bethany Presbyterian Church**

Observance of Palm Sunday at 11 a. m., appropriate sermon for the day. Evening service at 7:30 p. m., sermon, "A Thoughtful Man's Estimate of Religion." Sunday school at 10 a. m. Christian Endeavor at 6:30 p. m. The choir under the direction of Mrs. Ireland will sing morning and evening. T. P. Cramer will sing "The Palms" in the morning and Master Robert Neilson will play a violin solo in the evening. Your interest in the larger things of life will be quickened by attending these services.

L. Myron Booser, minister.

**Newman M. E. Church**

Palm Sunday service at 11 a. m. Baptism of infants and reception of members. Address by the pastor; thank-offering for woman's foreign and woman's home missionary societies. Solo by Mrs. A. Brunken. Evening service at 7:30 p. m. Sermon by the pastor, solo by Mrs. Melville T. Wire. Sunday school at 10 a. m. Intermediate and Epworth Leagues at 6:30 p. m. A cordial welcome for all.

Melville T. Wire, pastor.

**Baptist Church**

At the morning service at 11 o'clock Rev. W. C. Driver will speak on the subject of "Our pro-German Appetites." Evening service at 7:30, subject, "Who Is My Neighbor?" At the morning service the church will be asked to take action on the calling of a pastor. Sunday school meets at 10 a. m. and the B. Y. P. U. at 6:30 p. m. A most cordial invitation is extended to all these services.

**NOTICE**

Notice is hereby given, that the County Court will consider bids for the construction of a public library building for Josephine County, Oregon, to be erected at Grants Pass, Oregon, according to plans and specifications on file in the office of the County Clerk at Grants Pass, Oregon, and at the office of E. E. McClaran, 525 Lumber Exchange Bldg., Portland, Oregon.

Plans and specifications will be furnished on deposit of \$5.00, which will be refunded on or before five days after receipt of the same if returned in good condition.

All bids must be filed on or before 10 o'clock a. m. of the 4th day of April, 1918, in the office of the County Clerk of Josephine County, Oregon, and be accompanied by a certified check of 5 per cent of the amount bid, made payable to E. L. Coburn, County Clerk as per clause in specifications, as guarantee that a bond will be given and the construction contract signed.

The Court reserves the right to reject any and all bids or award the contract according to the best interests of the County.

By order of the County Court of Josephine County, Oregon.  
E. L. COBURN,  
County Clerk.

Rutter Wrappers printed to comply with the law at the Courier.

## To The American People

There is no foundation for the alleged violations of law attributed to our Company by agents of the Federal Trade Commission and I want to say emphatically that Swift & Company is not a party to any conspiracy to defraud the Government. Nor has Swift & Company been guilty of improperly storing foods or of making false entries or reports.

Conferences of packers, where prices have been discussed, have been held at the urgent request and in the presence of representatives of either the Food Administration or the Council of National Defense. And yet the packers have been accused of committing a felony by acting in collusion on Government bids!

We have done our best, with other packers, large and small, to comply with the directions of the United States Food Administration in all particulars, including the furnishing of food supplies for the U. S. Army and Navy and the Allies, now being handled through the Food Administration.

We will continue to do our utmost, under Government direction, to increase our production and assist the Food Administration. We consider that the opportunity to co-operate whole-heartedly and to our fullest powers with this branch of the Government is our plain and most pressing duty.

The Trade Commission Attorney has, by false inference and misplaced emphasis, given to disconnected portions of the correspondence taken from our private files and read into the Record, a false and sinister meaning with the plain purpose of creating antagonistic public opinion.

The services of the packers of the United States are most urgently needed, and I regret exceedingly that we should at this time have to spend our efforts in defending ourselves against unfounded, unproved, and unfair assertions such as are being daily made public.

L. I. Swift, President

**Swift & Company, U.S.A.**

**TWENTY YEARS AGO**

- Ladies wore bustles.
- Operations were rare.
- Nobody swatted the fly.
- Nobody had appendicitis.
- Nobody wore white shoes.
- Nobody sprayed orchards.
- Cream was 5 cents a pint.
- Most you men had "livery bills."
- Cantaloupes were muskmelons.
- You never heard of a "tin Lizzie."
- Doctors wanted to see your tongue.
- Milk shake was a favorite drink.
- Advertisers did not tell the truth.
- Nobody cared for the price of gasoline.
- Farmers came to town for their mail.
- The hired girl drew \$1.50 a week.
- The butcher "threw in" a chunk

- of liver.
- Nobody "listened in" on a telephone.
- There were no sane Fourths, nor electric meters.
- Strawstacks were burned instead of baled.
- Jules Verne was the only convert to the submarine.
- You stuck tubes in your ears to hear a phonograph, and it cost a dime.

**Daily Thought.**

We think there are circumstances under which we can deal with men without love, and there are no such circumstances. You can cut down the trees and make bricks, or hammer iron without love, but you cannot deal with human beings without it.—Tolstol.

### A Billion Dollar Insurance Fund

The Federal Reserve Banking System may be likened to a vast billion dollar mutual insurance fund which we and 7,000 other banks maintain at all times to give us the currency our depositors need to stand back of us in time of financial stress and to enable us to give better and safer banking service in many ways.

Every one of our depositors, large or small, without any additional cost, participates in the protection and benefits of this great system.



If you would like to have this nation-wide fund back of you, let us write or talk with you about it.

**FIRST NATIONAL BANK OF SOUTHERN OREGON**