

# The "Barefoot" Tire— and Why.



CONSIDER now the means by which many Tires have been given maximum Traction,—i.e., by means of a "sandpappy" texture in the Rubber of their Anti-Skid Treads.

Every time the Brakes are put on, to make such Tires grip the road, the relatively hard, unyielding, and comparatively brittle, texture of the Rubber in their Treads causes these Treads to grind away on the pavement, to WEAR OUT fast at the point of contact.

The sudden efficiency of their grinding-Traction also tugs so sharply on the Rubber Adhesive between the layers of Fabric in Tire as to separate these layers.

There is little "give" to them—just as there is little "slide" to them.

So, they gain Traction at the expense of Mileage. Naturally such Tires require a great BULK of such Rubber in order to deliver reasonable Mileage before worn out.

And, therein they differ radically from GOODRICH "Barefoot" Tires.

Because,—the Safety-Tread on Goodrich Tires is made of "Barefoot-Rubber," a new, and exclusive compound which discards unnecessary whitish "frictional" ingredients that are heaviest and inert, as proved by their lighter weight.

HERE is how it acts in Automobiling.—When the weight of the Car bears on this clinging "Barefoot-Rubber" Tread, and the power is applied to go ahead or reverse, the wonderful stretch in the "Barefoot" Rubber Sole (or Tread) of the Goodrich Tire acts as a sort of Lubricant between the Fabric Structure of the Tire and the Road.

Then, the Barefoot-Rubber "Toes," of the Goodrich Safety-Tread Tire, CLING to the pavement (instead of grinding against it), in such manner as your Bare Foot would cling to a slippery surface—without Grind, and so, with the minimum of Frictional Heat or Wear for maximum Traction.

Goodrich "Barefoot-Rubber" is now made into Goodrich FABRIC Tires,—Goodrich Silvertown Cord Tires,—Goodrich Inner Tubes,—Goodrich Truck Tires,—Goodrich Motor Cycle, and Bicycle, Tires, as well as into Goodrich Rubber Boots, Over-Shoes, Soles and Heels.

Get a Sliver of it from your nearest Goodrich Branch, or Dealer. Stretch it thousands of times, but break it you can't.

That's the Stuff that GOODRICH Black-Tread Tires are made of.

30 x 3	Ford Size	\$10.40
30 x 3 1/2		\$11.40
32 x 3 1/2		\$15.45
33 x 4	Safety Tread	\$22.40
34 x 4	"Fair-List"	\$22.40
36 x 4 1/2		\$31.60
37 x 5		\$37.35
38 x 5 1/2		\$50.60

**GOODRICH** — THE B. F. GOODRICH CO. Akron, Ohio — **"BAREFOOT" Tires**

## GOODRICH TIRES

OLDING'S GARAGE

PHONE 45-R

### PLAN \$50,000,000 MERGER MOVIE PICTURE CONCERNS

Los Angeles, Mar. 11.—Visions of a \$50,000,000 motion picture merger are seen here today in the action of Thomas H. Ince, D. W. Griffith and Mack Sennett in joining the Triangle

Film corporation. The new organization is said to be controlled by Wall street interests.

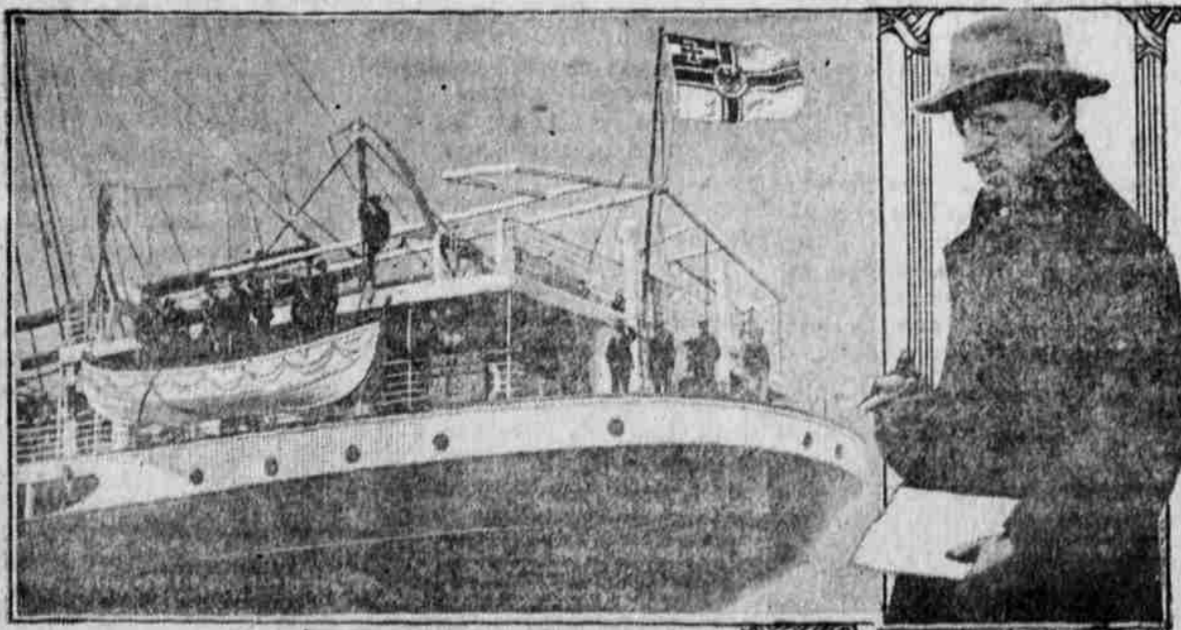
The merger includes three of the largest film producing plants here—New York, Keystone and the Fine Arts companies.

These corporations have marketed

their productions through the Triangle organization heretofore, but the merger, it is said, will control the separate companies in all their branches.

Mining blanks, Courier Office.

### THE GERMAN PRIZE SHIP, THE APPAM



Copyright by Griffith, from American Press Association.

The British Appam, captured off Africa and brought into Newport News by a German prize crew of twenty-two. The status of the Appam has aroused much discussion. Lieutenant Berg, shown here, commanded the Germans.

### APPLEGATE

Miss Margaret Hoffman returned from Gold Hill Tuesday, where she has been visiting her grandmother, Mrs. C. Bolt, for the last month.

Frank Boon, of Ruch, who has been laid up with a severe attack of la grippe, is improving rapidly and hopes to be able to resume his studies in the high school next week.

While at the round-up at Ruch Sunday, Benton Pool, of Union Town, had his leg broken by being run into by a bucking horse.

There is going to be another one of those good times at the Socialist hall Saturday, March 25. Costel, Harvey and Kellogg will furnish the music.

Jim Grub has sold his farm to Mrs. E. J. Brown for \$15,000. They are moving into the house near Pernoll's store. The Browns will move onto the place at once from their other farm and farm both places.

Mose Barkdull and Wood Jeter came out from Medford Monday. Wood has taken the position of foreman at the Bell mine.

Grandma Mee went to Central Point Sunday and will visit for the next several weeks with her daughters, Mary Mee and Mrs. Emma Bebb.

Automobile sales have been quite brisk here the past week. Four new cars have been purchased by farmers of this community—Fred Benedict, a Maxwell; Harley Mansfield, a Dodge, and Geo. Hoffman and Jas. O'Brien each a Chevrolet.

The girls' basketball team of Applegate will play the Murphy girls' team here Wednesday evening.

Everett Miller left for Joseph, Oregon, Monday. Mrs. Emma Miller and daughter, Josephine, expect to leave for the same place Thursday. Her daughter Gladys will remain with her sister, Mrs. Chester Kubli until school closes.

Those from here who attended the basketball game between Medford and Ashland Friday were Gladys Rose, Eva Grubb, Josie Wright, Fred Wright, and Elmo Throckmorton.

Mrs. Ben Thurston, who has been visiting her daughter, Mrs. Frank Longwill, of Medford, returned home Friday.

### KERBY

Genuine spring weather again.

Spring fever is getting in its work among all.

Sickness is telling on school attendance somewhat.

Eileen Lewis was absent a day and a half this week, but is able to attend again.

Leland Willits is laid up with a lame foot, received while jumping on Wednesday, but will probably be able to return to his place in the ninth grade by Monday.

Grandma Hart and Grandma Whorton are still quite poorly.

Mrs. Elmer Dunbar, granddaughter of Grandma Hart, was out on a short visit last week.

John Whetrock, who has been spending the winter in California, returned home this week. He looks well and feels good, but there is no place like Kerby.

The mining deal over the Queen of Bronze property seems to have put new life into the mining interests of this section. Since the consummation of that deal prominent mining men are here exploiting our mineral resources.

From present activities, the indications are that some big deals will be made in the near future, Fidler gulch property being particularly prominent in the negotiations.

Among other mining activities, it may be noted that the Tennessee gulch property known as the Roseburg group has been leased by Messrs. Husleton and Wagner for a term of years to a syndicate known as the Kerby Mining and Developing company. The lessees will install machinery and proceed with extensive development.

The development of our mining interests and the coming of the railroad, which seems now assured, and the development of sugar beet industries will serve to place Kerby and Illinois valley on the map.

### ALLEN L. BENSON GETS SOCIALIST NOMINATION

Chicago, Mar. 11.—Allan L. Benson, of Yonkers, N. Y., won the socialist party's presidential nomination, it was announced today. He was selected by a nation-wide socialist primary election.

George Kirkpatrick, of Newark, N. J., was nominated for vice-president.

Victor Berger and Morris Hillquist received majorities for the executive committee memberships.



Economy—In low first cost and small cost to operate and maintain. Strength—ability to stand up under the hardest sort of use. Simplicity—a plain, sturdy motor in a wonderfully strong and light car, easy for anyone to run and care for. The Ford car—your necessity.

The Runabout is \$443.25; Touring Car \$493.25; Coupelet \$643.25, laid down in Grants Pass, complete with all equipment except speedometer. On sale at Ford Garage, No. 304 N. 5th St.

JOSEPH MOSS, Agent

### APPEAL FOR AID FOR ALASKAN MISSIONS

Editor Courier: Those who were privileged to hear the recent address given in this city by Bishop Rowe, of Alaska, concerning his work in that large field, must have been impressed with the magnitude of its scope and benefits. In extent it has been carried during the twenty years of his unflinching zeal and effort from Sitka to Point Barrow, and has embraced not only the care and education of the natives but that large body of men which has drifted to that country from all over the world.

Of the hardships, perils and hazards encountered at all seasons in the establishment of missions, hospitals and workmen's clubs, I need not here speak, but rather of the need of that general and generous support Bishop Rowe should have in the prosecution of his arduous work.

As he fittingly remarked, that while Alaska belongs to the whole country, it seems to be particularly identified with the interests of the Pacific coast, commercially as well as geographically, and that to the people of these western states he naturally looked for the support and assistance necessary for the maintenance of its missions and hospitals.

The thrill of his appeal must have stirred many hearts to the importance of this work. Under its stimulus the members of St. Luke's guild of this city have already inaugurated an auxiliary branch for the conduct of such effort as can be encouraged to respond. They feel, however, that the privilege, to be wholly effective, should be general, and not limited, and they desire through your columns to give the matter greater publicity than could be accomplished by a personal canvass.

Already the work of preparing a box of needed supplies is under way. The list furnished includes articles of clothing to be made for the nurses and children, blankets, bedding and hospital or "first aid" supplies. The guild room on Fourth street will be open every Tuesday afternoon from 2 to 4 o'clock until Easter, for the receipt of contributions, either of money or suitable material for making the garments required. At other times such donations may be left at the rectory on D street.

It is earnestly hoped that the people of Grants Pass will be inclined to respond to this appeal promptly and in that generous spirit which can forget self for service.

HARRIET C. FIELDING,  
Chairman Auxiliary Branch,  
Grants Pass, Ore., March 10, 1916.

### RELEASED MEXICAN PRISONERS SHOT

Columbus, N. M., Mar. 11.—Six Mexican prisoners who were released by the 13th cavalry yesterday were found dead today a mile east of the town. Their bodies had been riddled with rifle bullets.

When the prisoners were freed, they were ordered to leave the city. Some of them were alleged to have been among the Villista raiders. Civil and military authorities are investigating.

### FORD PEACE ENVOY GETS COLD RECEPTION

Copenhagen, Mar. 11.—A conference of the premiers of Sweden, Norway and Denmark here today refused to receive Dr. L. C. Aked, formerly of San Francisco, as an emissary from the Ford permanent peace tribunal. They sent word to Aked that the conference did not care to take any active steps at present.

### "WILD MAN OF KELSEO" HAS BEEN CAPTURED

Oregon City, Mar. 11.—After terrorizing people near Kelseo and Boring for nearly a month, Daniel Clifford, 24 years old, "the wild man of Kelseo," is in jail here today. In a lucid interval he said he had relatives in Massachusetts. Clifford roamed the woods, starked naked, for weeks during extremely cold weather. Deputy sheriffs, armed with a suit case full of clothes, captured him yesterday. He has lived on roots.

Oregon mining laws, 40c. Courier

### Architects' and Engineers' Supplies

- Drawing Paper
- Tracing Paper
- Profile Paper
- Cross Section Paper
- Blue Print Paper
- Tracing Cloth
- Lettering Pens
- Field Books
- Drawing Instruments
- Protractors
- Curves
- Triangles
- T Squares
- Straight Edges

Pens, Higgins' Ink, Pencils, Water Colors, Brushes, Ruling Pens, Triangular Scales, Thumb Tacks

EVERYTHING FOR THE OFFICE

**Demaray's** Drug and Stationery Store