

**THE INDEPENDENT, HILLSBORO,**  
Official Paper of Washington County.

Entered at the Postoffice at Hillsboro, Oregon, for transmission through the mails as second-class mail matter.

Official Paper of Washington County.

BY D. W. BATH.

**Half Price.**  
The Exposition Company is certainly fortunate in securing this great attraction. A company prominent men with a desire to elevate the character of the amusement features, has brought from St. Louis one of the four largest and most expensive productions, something new, novel and original.

The immense building, double the size of any on the trail is most conspicuous and contains a high class refined attraction that will no doubt be the feature of the trail and be visited by every one attending the Portland exposition. It was pronounced by prominent Portland residents who visited St. Louis as the best thing at the World's Fair.

FROM THE ST. LOUIS PRESS:

The Visitor to the Siberian Railway enters from the Pike an accurate reproduction of the Railroad station at Moscow and passes on into a luxuriously appointed train of real railway cars. The train starts amid the usual sounds sensations and surroundings and there rush past ones wondering eyes the beautiful City of Moscow and many other thriving bustling cities and towns of Siberia each perfect in representation. The Ural mountains are climbed midst grandly beautiful mountain views and scenes. Out and over the lofty "Steppes" as the great Siberian plateau plains are called. And here is experienced a most marvelously realistic snow storm, a modern triumph of electric science and art.

To the past Lake Baikal, on and into Manchuria, through the seat of the present great war in the far East to Mukden and still on to Port Arthur at the verge of the Sea of Japan.

This remarkable illusion, the largest ever constructed is created by a series of cycloramas arranged at varying distances one above and behind the other to create the idea of proper perspective and each moving at different speed so that nearby objects seem to rush and whirl past the more distant seem to move less swiftly while distant objects fade away almost imperceptibly, just as more or less distant objects seem to go by the passenger on a swiftly moving train.

A Trip to Siberia is the only attraction brought to Portland in perfect entirety from the St. Louis World's Fair where it was installed at the immense expense of nearly one hundred thousand dollars.

CUT THIS OUT NOW YOU MAY NOT SEE IT AGAIN, it will be of value to you or to your friends who wish to visit the great exposition at Portland.

TO OUR PATRONS: We have arranged with the Great Siberian R. R. Co.'s Agent at Portland, where by you may obtain a free pass or reduced rates to the largest and most costly attraction on the Trail, viz., a Trip to Siberia and the battle field of Mukden and Port Arthur.

Present this and the accompanying article at the Ticket Office of the "Trip to Siberia" on the Trail, and you will be admitted free if accompanied by one other person paying the regular admission fee of twenty-five cents. This will be good during June and July if signed by you below.

Editor or Prop.

Name of Publication.

Place Published.

Signature.

**Synthetic Tapeworm.**

This is a story of an advertising quack who spent some weeks in Detroit last year with his band and circus tent healing the sick with his marvelous cure alls.

A woman, who, we suppose, had been given up to die by all the doctors—her philanthropist and advertiser were of that sort—called upon the Distinguished Scientist, Whooper the Great, to see what caused all those funny pains and that general bad feeling she had. The Wise One gazed at her for a moment and said, "Madam, you have a tape-worm."

"Why, the idea!" protested she. "I never suspected it; how can you tell so quick?"

"I have treated so many cases of that kind that I can tell them immediately," replied the "Doctor." "I will give you some medicine to take, but first I will have to prepare a capsule especially for you and this you must take first."

What the woman got home and started to take the capsule she found it was as large as a young pullet's first egg, so she decided to empty it and take it in bites until she got it all down.

When she took it to the druggist.

He unrolled the thing, which looked like a lot of tangled fiddle-strings. It was about forty-nine feet of catgut—that's all.

And if the woman had swallowed it as directed there would have been another wonderful case of tapeworm cured—or killed—to the "doctor's" credit.

But she didn't—and that is how we happened to get the story.

WANTED BY CHICAGO MANUFACTURING House, person of trustworthy and somewhat familiar with local territory as assistant in branch office. Salary \$15 paid weekly. Permanent position. No investment required. Business established. Previous experience not essential to engaging. Address Manager Branches 322 Dearborn St., Chicago. July 7

All kinds of screen doors, also a full line of camping outfit at Donelson's Furniture Store.

**An Elegant Summer Book.**  
"Restful Recreation Resorts," the 1906 Summer Book issued by the passenger department of the Oregon Railroad & Navigation Company, contains forty-eight pages and cover. The book is printed on heavy white paper, fifty-eight cuts being used to illustrate the trips up and down the Columbia river, to the mountains, beaches, inland resorts and fountains of healing. The cover is done in three colors, adding materially to the beauty and effectiveness of the publication, which may be had by sending two cents in stamps to A. L. Craig, General Passenger Agent of the Oregon Railroad & Navigation Company, Portland, Ore. It is a good thing to send to your friends in the East who expect to visit the Lewis & Clark exposition.

**Portland and Return 85c.**  
The Southern Pacific is now selling round trip tickets to Portland from Hillsboro for 85 cents, good going Saturday P. M., or any train of Sunday, returning Sunday and Monday, giving a day Sunday and Monday in Portland. The same arrangement applies from Portland, giving all Portland people a chance to visit valley points at greatly reduced rates.

**Notice of Assessment.**  
Notice is hereby given that assessments for the improvement of Second street, Hillsboro, Oregon, are now due and payable at the office of the undersigned and all persons paying one-fourth of their assessment on or before July 10, 1905 may have balance remitted by the city council. Hours for collection 9:30 a. m. to 4:30 p. m.  
Dated at Hillsboro, Oregon, June 29, 1905.  
H. T. BAYLEY, Recorder.

**Sunday Train.**  
Commencing Sunday, June 4, 1905, and continuing until after the Lewis and Clark fair, the Southern Pacific will run regular trains, as on week days, as follows:  
No. 2 going South, 8:44 a. m., and 6:04 p. m.  
No. 1 going North 4:31 p. m. and 7:14 a. m.  
**Get Your Wood Sawn**  
By T. D. Tallman, Hillsboro. He is in the field to suit his patrons and do the work well, at fair prices. Fir wood, 50 cents per cord; hard wood, 60 cents per cord. Call up phone, Independent Line, 262.

**HOLLISTER'S Rocky Mountain Tea Nuggets**  
A Bony Medicine for Bony People.  
Brings Golden Health and Restless Vigor.  
A specific for Constipation, Indigestion, Liver and Kidney Troubles, Pimples, Eczema, Insipid Blood, Bad Breath, Sluggish Bowels, Headache and Backache. It's Rocky Mountain Tea in tablet form, 25 cents a box. Genuine made by HOLLISTER'S DRUG COMPANY, MADISON, WIS. GOLDEN NUGGETS FOR SALLOW PEOPLE

**KILL THE COUGH AND CURE THE LUNGS**  
WITH **Dr. King's New Discovery**  
FOR CONSUMPTION, COUGHS and COLDS. Price 50c & \$1.00 Free Trial.  
Surest and Quickest Cure for all THROAT and LUNG TROUBLES, or MONEY BACK.

**ONE MAGAZINE FREE!**  
The Hillsboro Independent, \$1.00  
The Three Oregon Semi-Weekly Journal 1.50  
Orchard and Farm, - - 1.00 **\$2.25**  
Address all orders to  
**NORTHWESTERN SUBSCRIPTION AGENCY,**  
103 Third St., Portland. **H. MARCUS, Mgr.**

**ELECTIONEER-WILKES BLOOD IS THE MOST SUCCESSFUL BLEND**  
**Lovelace Record 2:20**  
TRIAL 2:12



**REGISTERED AS PRINCE LOVELACE 32741**

Sire of Byron Lace, 2:14 1/4 True Love, 2 years old, trial, 2:19. Rocklace, 5 years, trial, 2:19  
LOVELESS, (3) 2:20, fastest 3-year-old, record made on N. P. circuit in 1904, and winner of every 2 year-old race in which she started in 1903.  
TRUE LOVE, 2-years old, trial, 2:19.  
ROCKLACE, 5 years old, trial 2:15 1/4.  
LOVELLY DELL, winner of 2-year-old pace at Salem in 1904.  
BESSIE LOVELLACE, trial 3-year-old trotter, 2:25.  
LOTTIE B, contesting in three heats at 2-year-old pace in 2:26.  
Sired by EGOTIST, sire of 49, son of the great Electioneer and the great brood mare Sprite.  
Dam CREPON, (dam of Dorsey L. 2:20 1/2, Betsy Britton, 2:20 1/4, Lovelace, 2:20, Goldiac, 2:18 1/4, The Orphan, 2:18 1/2, Duchess, 2:27 1/2, Brilliantine, 2:29 1/2), by Princeps, sire of 52 in the list. Second Dam Crape Lisse (dam of King Rene, Jr., 2:17, Braid, 2:10 3/4, Balzarine 2:27, by the great Geo. Wilkes.

**LOVELACE** is a bay stallion 16.1 and weighs 1280 pounds. His colts are a stake winners wherever they start and prize winners in the show ring. The get of Lovelace brought a higher average at the McCarthy sales than that of any other stallion. His colts are uniformly good size, level headed and speedy. He will make the season of 1905 at Hillsboro. Season, \$25; insurance, \$35.

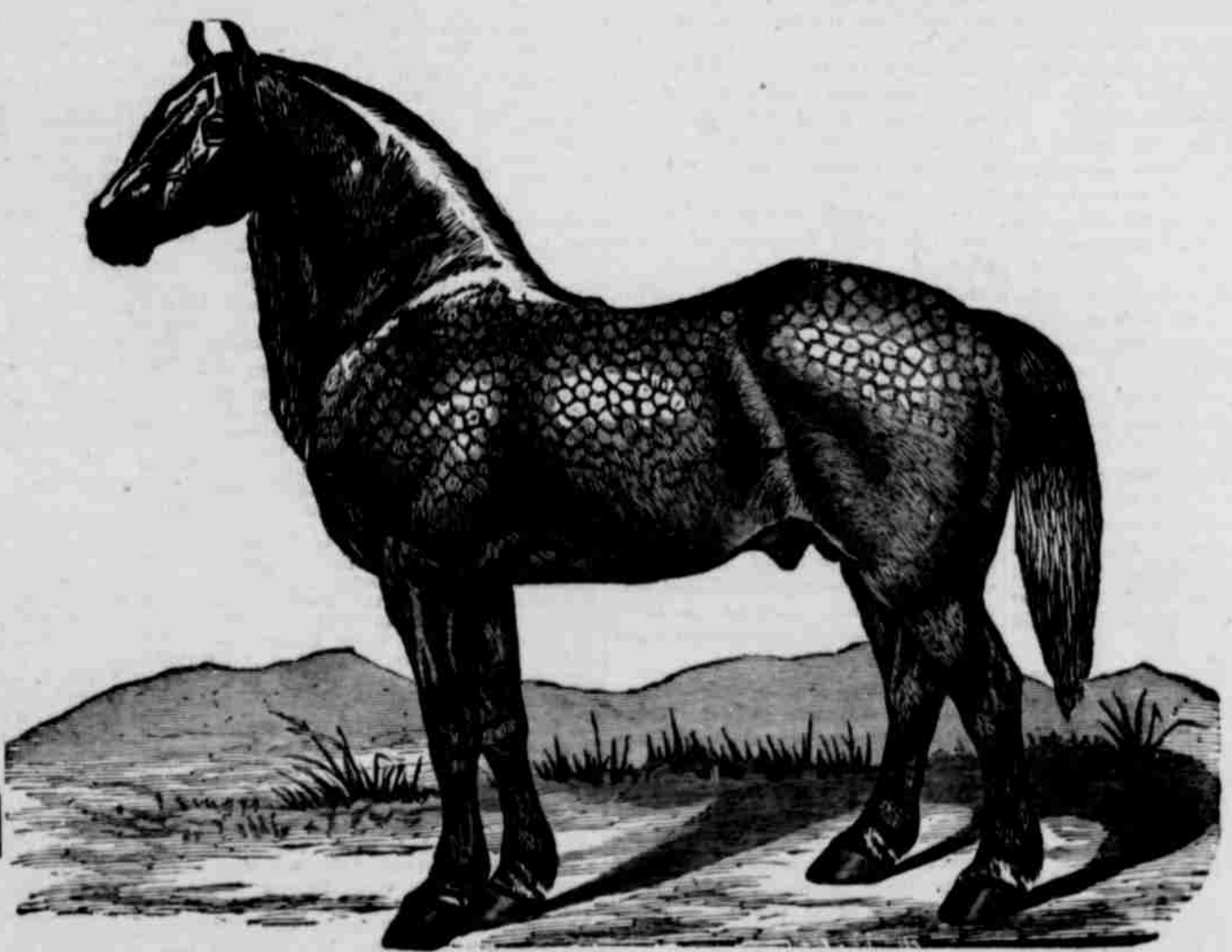
**MILWAUKEE.**

[Thoroughbred.] Sired by FREE KNIGHT, son of Ten Broeck. First dam Fautress, son of Enquirer; second dam Can Dance, by War Dance, son of Lexington; third dam Bank Stock, by Bayonet; fourth dam by Imp. Seythian; fifth dam by Imp. Yorkshire, etc.

**MILWAUKEE** is a bay stallion 16 hands high, and was a great race horse, having run quarters in 22 1/4, five furlongs in :59, miles in 1:39, mile and a quarter in 2:07 1/8, and mile in 1:53, and has defeated some of the best horses in America. Will make a season at Hillsboro, at \$25.

**E. B. Tongue, Hillsboro.**

**VALINDUS--22031.**



Is recorded by the American Percheron Horse Breeders' and Importers Association, and his recorded number is 22031 His color is Grey, star. PEDIGREE—Foaled July 13, 1898; bred by M. W. Dunham, of Wayne, Ill., owned by Albert J. Hartrampf, Hillsboro, Oregon; Sire, Villers 31169, by Briard 5317, by Brilliant 1271, by Brilliant 1899, by Coco II 714, by Vieux Chaslin 713, by Mignon 715, by Jean Le Blanc 730. Dam—Linda 2751, by Valliant 404, by Prosper 893, by Decoude 892, by Vieux Jean 894, by Mignon 715, by Jean Le Blanc 739. Second Dam—By Briard 887, by Labouere 886, by Jean Le Blanc 730.

**VALINDUS** will be at S. A. D. Meek's place from noon Monday until Tuesday morning of each week. At Greenville, from noon Tuesday until Wednesday morning. At Hillsboro, Wednesday evening until Thursday at 4 o'clock. Peter Nelson's place, Thursday evening until Friday morning. Phillip, Friday until Saturday morning. At the Farm, Saturday and Sunday morning.

**GEO. GIBSON, Manager.**

**J. W. CONNELL, Owner.**

**IT'S "North Coast Limited."**  
via Yellowstone Park Line.

**PULLMAN STANDARD SLEEPERS.**  
Electric Lights in Every Berth.

**PULLMAN TOURIST SLEEPERS.**  
Electric Lights.

**Dining Car, Night and Day**  
Electric Lights

**Observation Car**  
Electric Lights, Electric Fans,  
Barber Shop. Bath. Library.  
Numerous Other Comforts.

**Day Coaches** Electric Lights.

**3** All Travel Comforts are Found on any of our **3**  
**3--Daily Transcontinental Trains--3**

The Ticket Office at Portland is at  
**255 Morrison Street, Corner of Third**

**A. D. CHARLTON,**  
Assistant General Passenger Agent, Portland, Ore.

**New Bicycle Store**  
R. L. Bennett, Prop.

Wheels to, Repairing of all kinds, New and second hand wheels for sale. Shop on Main Street.

ASK THE AGENT FOR TICKETS VIA

**GREAT NORTHERN RAILWAY**

**O. R. & N.**  
**OREGON SHORT LINE**  
AND **UNION PACIFIC**  
Three Trains to the East Daily

Through Pullman standard and tourist sleeping cars daily to Omaha, Chicago, Spokane; tourist sleeping cars daily to Kansas City; through Pullman tourist sleeping cars (personally conducted) weekly to Chicago, Kansas City; reclining chair cars (seats daily) to East daily.

**70 HOURS PORTLAND TO CHICAGO 70**  
No change of cars

DEPART FOR	TIME SCHEDULES from Portland, Or.	ARRIVE FROM
Chicago	Salt Lake, Denver, Ft. Worth, Omaha, Kansas City, St. Louis, Chicago and East.	5:25 p. m.
Atlantic Express	Salt Lake, Denver, Ft. Worth, Omaha, Kansas City, St. Louis, Chicago and East.	7:15 a. m.
St. Paul	Walla Walla, Lewiston, Spokane, Walla, Pullman, Minneapolis, St. Paul, Duluth, Milwaukee, Chicago and East.	8:00 a. m.

**Ocean and River Schedule**  
For San Francisco—Every five days at 8 p. m. For Astoria, via points and North Beach—daily (except Sunday) at 8:00 p. m. Saturday at 10:00 p. m. Daily service (water permitting) on Willamette and Yamhill rivers.

For further information ask or write your nearest ticket agent, or

**A. L. Craig**  
General Passenger Agent,  
The Oregon Railway & Navigation Co., Portland, Oregon.

We give Expedited Service on Freight. Route your shipments via the Great Northern.

Full information from W. W. HANDEE, General Agent, Portland, Ore.