

PORTLAND BUSINESS DIRECTORY

Anker-Holth Cream Separator



The original and only real self-balancing bowl.

The separator with a real speed indicator that is good for a lifetime.

The light running and close skimming separator.

Write us for catalogue.

THE J. C. ROBINSON CO.,

44 First Street, PORTLAND, ORE.

FISHERS AUTO BED



E. HYDE,
State Representative

66 Sixth St., PORTLAND, ORE.

Sleep on your Seat Cushions.

Compact—Fits under the rear seat.

Write for circulars.

Agents—Write for Special Offer

FIVE DAYS' FREE TRIAL on guaranteed Rebuilt machines. We are also agents for the



WOODSTOCK

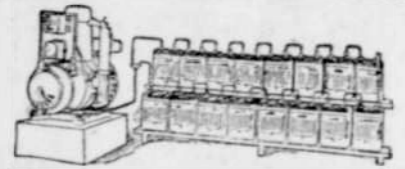
Write for booklet.

Rebuilt Typewriter Co.,
304 Oak St., Portland, Or.

DELCO-LIGHT

The complete Electric Light and Power Plant

Clean, safe electric light and power at the touch of a convenient button.



MODERN APPLIANCE CO., Seattle, Wn.

There's a dealer in your territory. Please write us.

EVERYTHING FOR THE OFFICE
OFFICE FURNITURE & APPLIANCES
PRINTING—ENGRAVING—BOOKBINDING

WASHINGTON 6090
65548



FIFTH & OAK STREETS, PORTLAND, OREGON
COMPLETE LINE OF STEEL
FILING DEVICES AND SYSTEMS

That grounded maxim, so rife and celebrated in the mouths of wisest men, that to the public good private respects must yield.—Milton.

Earn More

Young Women and Men

Business cries for trained minds. Grasp your opportunity. Enroll now in Northwest's biggest business college, Behne-Walker, Portland. Free Catalog.

Hides, Pelts, Cascara Bark, Wool & Mohair

We want all you have. Write for Prices and Shipping Tags.
THE H. F. NORTON COMPANY,
Portland, Ore., Seattle, Wn., Bellingham, Wn.

SHIP

Veal, Pork, Beef, Poultry, Butter, Eggs and Farm Produce, to the Old Reliable Everding house with a record of 45 years of Square Dealings, and be assured of TOP MARKET PRICES.

F. M. CRONKHITE,
45-47 Front Street, Portland, Oregon

FRED DUNDEE

MOTOR CAR REPAIRING

MACHINE WORK

MAGNETO SERVICE STATION

ALL KINDS OF

WELDING

CYLINDER GRINDING

PROMPT ATTENTION

TO ALL ORDERS

Broadway at Flanders, Portland, Or.

P. N. U. No. 29, 1918

SCHOOL SUPPLIES

Northwest School Furniture Co., 244 3rd St. Everything for schools. Also theatre chairs, church furniture. Folding chairs and seats.

Fuller's Telegraph School, Panama Bld., qualifies you for \$65 to \$85 positions in short time. Write for catalogue.

MISS DECKER'S Private Business College. Alisky Bldg., 3d & Morrison Sts.

EMOLER BARBER COLLEGE

Will teach you the trade in 8 weeks. Pay you while learning, get you a position. 234 Burnside St.

PHYSICAL THERAPEUTICS

Dr. R. A. Phillips, 906 Broadway Bldg. Disorders of the stomach, liver, kidneys, bowels, goitre, high blood pressure and female disorders.

ELECTRIC THERAPY

Drs. MacPherson & Williams, No. 122 1/2 Grand Ave. Acute and chronic diseases, rheumatism, gotter and female troubles, treated by electricity.

CARBON PAPER & TYPEWRITER RIBBON

Simmons Carbon Paper Co., 609 E. 89th North. All kinds of carbon paper, extra durable typewriter ribbons.

AGATE CUTTERS & MFG. JEWELERS

Jewelry and watch repairing. Miller's, 353 Wash. St. Majestic Theater Bldg.

AUTO ACCESSORIES

Motors, gears, bearings, wheels, axles, and trailers. We wreck all makes of cars and sell their parts at half price. David Hodess Co., N. Broadway and Flanders.

ACETYLENE LIGHTING SYSTEMS.

Pilot Generators installed. All kinds of Supplies. J. W. Clancy 333 E. Morrison St.

KANT-KICK-KRANK

FOR FORD CARS:—KANT-KICK-KRANK can be attached to Ford cars by anyone in 15 minutes. When attached you can crank your car with absolutely no fear of kick back. Ask your Hardware or Garage man about it. If your local dealer cannot supply you, write direct for prices and full information. AGENTS WANTED. C. A. CLOYED, 5933 45th Ave. S. E., Portland, Oregon.

BULK GRAIN ELEVATOR



Any Size. None Too Small; None Too Large. WOOD OR CONCRETE.

Investigate Construction at Iowa, Ore., and Milton, Ore.

FRANK C. BURRELL CO.

Lewis Building
PORTLAND, OREGON

NORTONIA HOTEL

PORTLAND, ORE.

Central Location. Beautifully Furnished

Excellent Cafe. 11th and Stark.



Without Bath \$1.00

With Bath \$1.50

Weekly Rates

Monthly Rates

Central Location. Beautifully Furnished

Excellent Cafe. 11th and Stark.

One Cause of Failure.

We are fickle and uncertain, ever falling, ever liable to be disappointed and dissatisfied, often only because we have not realized our appointed mission and its necessities.—Rev. T. T. Carter.

Cuticura Complexions.

Nothing better than Cuticura Soap daily and Ointment as needed to make the complexion clear, scalp clean and hands soft and white. For free samples address "Cuticura, Dept. X, Boston." Sold by druggists and by mail. Soap 25c, Ointment 25c and 50c.—Adv.



Soap 25c. Ointment 25c & 50c

New Houston Hotel

Sixth and Everett Sts., Portland, Ore.

Four blocks from Union Depot. Two blocks from New Postoffice. Modern and fireproof. Over 100 outside rooms. Rates 75c to \$2.00.

CHAS. G. HOPKINS, Manager.

200 Rooms Near Both Absolutely 100 Baths Depots Fireproof

Hotel Hoyt

Corner Sixth and Hoyt Sts., Portland, Ore.

LOU HIMES, Manager.

RATES:—75c to \$2. SPECIAL—Week or Month

RAISE LEGHORNS FOR FAMILY USE

Meat Possibilities of Fowl Have Been Neglected by Most Poultry Breeders.

AVERAGE BIRD IS TOO SMALL

It Would Be Profitable for Poultry Raisers to Give More Attention to These Egg Producers—Make Splendid Broilers.

(Prepared by the United States Department of Agriculture.)

The Leghorn fowl owes its popularity so largely to its egg-producing capacity that the meat possibilities of the breed have been neglected by most Leghorn breeders. Such failure to recognize the potential food value of birds kept to produce a special food product may have been excusable under prewar conditions, but in the present need of utilizing to the full every capacity of every food-producing animal, breeders of Leghorns should give due attention to the development of their table qualities.

Discussion of the meat value of a breed must note and take due account of the fact that the markets—that is, the dealers and consumers—do not recognize breed differences in poultry, except as in a few localities particular breeds may be generally kept and may become known locally, or in special trade lines for excellent table quality. The poultry breeder, therefore, in planning how to make the most of the meat values of his stock considers what market demands can be filled with poultry of the breed which he keeps.

Average Leghorns Too Small.

Average Leghorn hens weigh only about 3 pounds alive. Many of them will dress only 2 to 2 1/2 pounds. This is not a desirable size for a table fowl, being too much under the weights (4 to 5 pounds) which most people prefer when buying a fowl.

Besides being small herself, the average Leghorn produces chicks so small that they do not remain very soft-meated until they have reached the size the market demands in broilers, and so the cockerels cannot be



Ideal Type of Leghorn.

sold for poultry at that stage with the same profit as cockerels from larger stock.

Standard Leghorns Better for Poultry.

The standard weights for mature Leghorns are: Males 5 1/2 pounds, females 4 pounds. By making these the minimum weights for birds used in breeding, and by giving the preference to the largest specimens that show Leghorn type without coarseness, strains of Leghorns may be developed that with no loss of laying capacity have considerable merit as table fowls in a limited range of uses.

Leghorn hens which alive weigh 4

KITCHEN WASTE FOR FOWLS

Certain Amount of Table Scraps in Every Household Will Help Make Eggs and Meat.

(Prepared by the United States Department of Agriculture.)

Let the table scraps help make eggs and meat. In every household, no matter how economical the housewife, there is a certain amount of table scraps and kitchen waste which has feeding value but which, if not fed, finds its way into the garbage pail. The saving medium: Some hens.

Green Feed for Pigs.

Brood sows and their litters should have green feed of some kind. Green clover is best. Oats and peas are a good substitute. Oats and dwarf Essex rape or any of the cereal grains sown with rape and clover are also satisfactory pasture crops.

First Planting of Peas.

Cover the first planting of peas about one inch deep. Later plantings should be planted deeper.

pounds or more are heavy enough to meet the demand for dressed fowls a little under the weights generally preferred, and there is enough demand for fowls at this weight to take all the supply.

The cockerels bred from hens of 4 pounds weight and over, if properly grown, will make broiler size as quickly as the chicks of most of the larger breeds. They will also be soft-meated up to about 2 to 2 1/2 pounds weight. After that they are apt to harden quickly and their flesh is not so tender. Leghorn cockerels produced from very large males and females—that is, from males that weigh upward of 6 1/2 pounds and females upward of 5 1/2 pounds—frequently keep quite soft-meated until they reach 4 to 5 pounds weight. Such birds make very satisfactory small roasters for home use, though they will not sell as well on the market as birds of the same weight of a slower growing breed.

Growing Leghorns for Meat.

Even when good-sized Leghorns are used for breeding, the chickens will not make good poultry unless they are well grown. In a measure this is true of any chickens; those that are poorly grown never make the development or have the table quality of those that are well grown.

To secure good growth, Leghorn chicks must not be overcrowded in brooders or coops, and as soon as they are large enough to range over an extended piece of ground should be given as wide range as possible and at the same time fed liberally. Chicks so treated will grow twice as fast as those that are reared under the intensive conditions to which the greater number of Leghorn chicks are subjected.

HIGH-PRODUCING GARDEN

(Prepared by the United States Department of Agriculture.)

Are you sure that your garden is producing as much as it is capable of doing? A half-acre garden, if properly cared for, will produce sufficient vegetables for the average family's use. It will produce far greater returns per acre than can be realized from an equal area devoted to general farm crops. But it is necessary to give the garden proper care and attention if you expect maximum crops. Farmers' Bulletin 937, recently published by the United States department of agriculture, which will be sent free to any who apply for it, so long as the supply lasts, gives specific directions for the planting, care and cultivation of the various vegetables. Make sure that you are not wasting time and energy by failing to give your garden the care that insures highest yields.

CARING FOR CONFINED HENS

Provide Good Straw Litter in Which to Scatter Grain—Also Supply Green Feed.

(Prepared by the United States Department of Agriculture.)

If the chickens must be confined on account of bad weather, provide a good straw litter in which their grain feed may be scattered. This will give them exercise and keep them interested and healthy. When chickens that have been accustomed to free range are closely confined this frequently checks their development for the time being unless they are made contented in the new quarters. Provide green feed for them also.

Rape in Hog-Corn.

Where corn is to be hogged down, it is a good plan to sprinkle a little rape seed in the field at the time of the last cultivation; it will then make a sufficient growth to be nice and tender at feeding time.

CHICKENS FOR HOME FLOCKS

Pay Little or No Attention to Fowls Which Are Not Successfully Raised in Community.

(Prepared by the United States Department of Agriculture.)

In considering the breed of chickens best suited for the home flock, pay little or no attention to those which are not of local importance, that is, not being raised successfully in the community, except on the advice of experts.

Time to Cut Alfalfa.

The time to cut alfalfa for hay is just as new sprouts are starting up from the crown of the plant, about the time the first blossoms appear. If cut later the yield of the following cutting will be lessened.

Potatoes for Family Use.

Potatoes for family use should always be grown on grass or clover sod land. If manure is used it should be spread broadcast and well harrowed into the soil.

DOCTOR URGED AN OPERATION

Instead I took Lydia E. Pinkham's Vegetable Compound and Was Cured.

Baltimore, Md.—"Nearly four years I suffered from organic troubles, nervousness and headaches and every month would have to stay in bed most of the time. Treatments would relieve me for a time but my doctor was always urging me to have an operation. My sister asked me to try Lydia E. Pinkham's Vegetable Compound before consenting to an operation. I took five bottles of it and it has completely cured me and my



work is a pleasure. I tell all my friends who have any trouble of this kind what Lydia E. Pinkham's Vegetable Compound has done for me."—NELLIE B. BRITTINGHAM, 609 Calverton Rd., Baltimore, Md.

It is only natural for any woman to dread the thought of an operation. So many women have been restored to health by this famous remedy, Lydia E. Pinkham's Vegetable Compound, after an operation has been advised that it will pay any woman who suffers from such ailments to consider trying it before submitting to such a trying ordeal.

People to Avoid.

"Some people," said Uncle Eben, "regards givin' good advice as a form of amusement, same as telling funny stories."

AT AN END—the "female complaints"

and weaknesses that make woman's life a misery. They are relieved by Dr. Pierce's Favorite Prescription. For all the derangements, disorders, and diseases peculiar to the sex, this is the only remedy certain to benefit.

It's a legitimate medicine for woman, carefully adapted to her delicate organization, and never conflicting with any of her conditions. It regulates and promotes all the proper functions, builds up and invigorates the entire system, and restores health and strength.

Are you weak, nervous and ailing, or "run-down" and overworked? Then it will bring you special help. It's the mother's friend. It lessens pain and insures life of both mother and child. Dr. Pierce's Favorite Prescription has a record of years of cures. It is the most potent invigorating tonic and strengthening nerve known to medical science. It is made of the glyceric extracts of native medicinal roots found in our forests and contains not a drop of alcohol or harmful drugs. Sold in Tablet or Liquid form by dealers. Tablets 60c.—Adv.

Alcohol From Sawdust. Experiments have shown that a ton of dry sawdust will yield with proper treatment twenty to twenty-five gallons of 95 per cent ethyl or grain alcohol.

Hurrah! How's This

Cincinnati authority says corns dry up and lift out with fingers.

Ouch ! ? ! ? ! ? ! This kind of rough talk will be heard less here in town if people troubled with corns will follow the simple advice of this Cincinnati authority, who claims that a few drops of a drug called freezone when applied to a tender, aching corn or hardened callous stops soreness at once, and soon the corn or callous dries up and lifts right off without pain.

He says freezone dries immediately and never inflames or even irritates the surrounding skin. A small bottle of freezone will cost very little at any drug store, but will positively remove every hard or soft corn or callous from one's feet. Millions of America's women will welcome this announcement since the inauguration of the high heels. If your druggist doesn't have freezone tell him to order a small bottle for you.—Adv.

"To Thine Ownself Be True." If a man has nothing to reproach himself with, he can bear anything.—Phillips Brooks.

To keep clean and healthy take Dr. Pierce's Pleasant Pellets. They regulate liver, bowels and stomach.

Horse's Musical Sense. The musical acuteness of horses is shown by the rapidity with which cavalry horses learn the significance of trumpet calls.

Sore Eyes

Granulated Eyelids, Eyes inflamed by exposure to Sun, Dust and Wind quickly relieved by Murine Eye Remedy. No Smarting, just Eye Comfort. At Druggists or by mail 50c per Bottle. Murine Eye Salve in Tubes 25c. For Book of the Eye TALK ask Murine Eye Remedy Co., Chicago