

CANDY will be given free to all little children Friday, December 21, from 2 to 4 p. m., if accompanied by an adult.

Yes, to every little boy and girl who visits Old Santa at our store tomorrow afternoon will be given

CANDY FREE



Our Beautiful 1918 Art Calendar

will be given out to our customers by Old Santa himself every day, beginning today (Dec. 20) between the hours of 2 and 4 p. m. Only **ONE** to each home--**ONLY ONE**.
Get Yours Today

Old Santa Claus is Coming to Our Store

Everything for Your Christmas Cakes and Puddings

Our main show window is highly suggestive of Christmas preparation time. There is scarcely a housekeeper who is not thinking of her Christmas Cakes and Puddings. These holiday necessities usually make a big hole in a number of dollar bills and the careful housewife is always attracted by anything which cuts down the cost. We are prepared to supply your needs at very reasonable prices. See our window.

New Nuts—We pay special attention to quality and buy in quantities that enable us to secure rock-bottom prices. Our present stock includes chestnuts, pecans, bra-

zils, peanuts, walnuts, almonds and fresh coconuts.

Pure Apple Cider—We have it; made in the orchards and brought to us fresh and pure. Fine for mince-meat and delicious as a beverage. Made at M. Olson's Clover Ridge farm, Seghers, Ore. Put up in half gallon bottles and sterilized. Order today

Mixed Nuts—One of our specials for the holiday season is Mixed Nuts. This is our No. 1 mixture, made up of Walnuts, Pecans, Almonds and Brazils. All good quality nuts at a special low price.

A Box of Good Havana Cigars for Christmas—For a man, there is no gift more appropriate or more highly ap-

preciated than a box of good Havana Cigars. We have the very best Cigars, Cigarettes, etc., at reasonable prices and it will be to your interest to give us a call before making your Christmas purchases.

TURKEYS—It's not a minute too soon to order your Turkey from our poultry department. Local birds, carefully dressed by our own employees. Any size you wish

Dressed Poultry—Turkeys, good fat hens, broilers and fryers, dressed or on foot. We send out the finest dressed poultry in the city. Each order put up specially.

Stuff Your Turkey with Oysters—We receive fresh shipments of Oysters daily, direct from the oyster beds. Solid meat oysters.

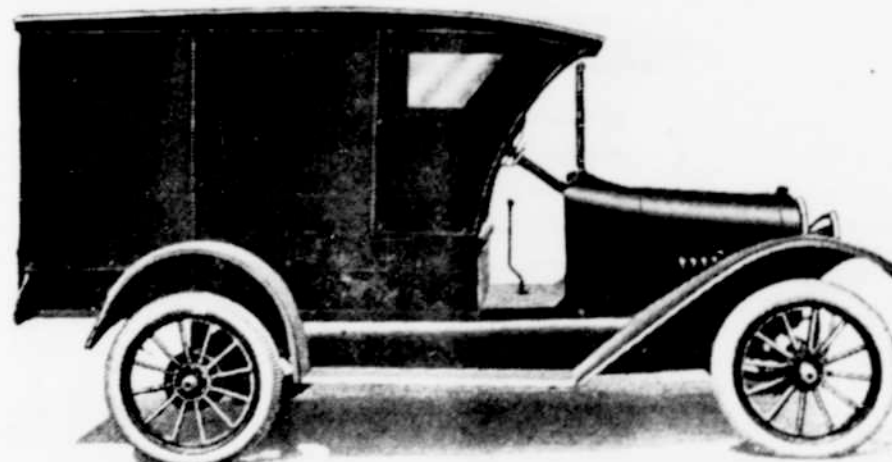
Store remains open till 9 p. m. Monday, December 24, but is closed all of Christmas Day.

SCHULTZ PURE FOOD STORE

Our Afternoon delivery leaves at 2 o'clock. Place your Xmas orders as early as possible.

Chevrolet Commercial Car

Panels 10 inches deep, with 5 inch flare board. Loading space, inside measurements: 43 inches wide, 63 inches long, 52 inches high; 500 pounds capacity.



Top complete, with rolled side and back curtains made of heavy oiled duck. Celluloid lights at both sides of seats. Finished Standard color—Chevrolet green.

No. 6 Delivery, Express Body--\$695 Forest Grove

No. 5, \$675.00

No. 7, \$740.00

Chassis, \$650.00

SPECIFICATIONS

Motor: Four-cylinder, valve-in head type, 3 11-16 inch bore, 4 inch stroke.
Cylinders: Cast en-bloc (including upper half of crank case); head detachable.
Valves: 1 1-2 inch diameter.
Connecting Rod Bearing: 1 7-8x1 3-8 inches.
Crank Shaft Bearings: Front, 2 5-16 x1 3-8 inches; center, 1 1-2x1 21-32 inches; rear, 2 11-16 x1 3-4 inches; center bearing of bronze, back babbit lined.
Cam Shaft Bearings: Front, 2 3-8x 1 5-16 inches; center, 2x1 9-32 inches; rear, 1 7-16x1 1-4 inches.
Oiling System: Splash, gear pump and individual oil pockets.
Carburetor: Zenith improved double jet.
Ignition: New improved Remy.
Clutch: Cone type.

Transmission: Selective type, sliding gear, three speeds forward, and reverse.
Cooling: Water pump; radiator extra size.
Rear Axle: Three-quarter floating, wheel bearing carried on the wheel-hub and in axle-housing, not on axle-shaft; nickel steel shafts and gears; Hyatt roller bearings. Ratio: 3 1-2 to 1.
Front Axle: Drop-forged; I beam, with integral yokes of special steel, double-heat treated; tie rod ends, steering spindles and arms of chrome vanadium steel; wheels fitted with cup and cone ball bearings.
Brakes: Emergency, internal expanding type; service, external contracting type; 10 inch brake drums.
Wheels: Wood, artillery type, demountable rims, large hub flanges.
Tires: 30x3 1-2 inches; non-skid front and rear.

Fenders: Front and rear fenders, front fender skirts extended to meet the radiator splash-guard.
Drive: Left side, center control; spark and throttle under steering wheel; foot accelerator.
Steering Gear: Compound spur and sector, adjustable for wear; 15 inch steering wheel.
Springs: Semi-cantilever, front and rear, each with extra wide main leaf, or driving plate, made of chrome vanadium steel.
Wheelbase: 102 inches.
Equipment: Electric lights and starter, highest type two-unit system, single wiring used; complete lamp equipment, including head-light dimmers; speedometer; electric horn; complete tool equipment, including pump and jack.

Lower Main St.

Wiles & Sohler
Distributors for Washington County

Forest Grove, Ore