

WHEN IN
SEATTLE
TRY THE **FRYE**

SEATTLE'S LARGEST HOTEL
Only three blocks from Depots and Docks. Opposite City Hall Park and Court House.
THE FINEST DOLLAR ROOM IN AMERICA
With detached bath, 1 person, \$1.50 \$2.50
2 persons, \$1.50 \$2.50
With private bath, 1 person, \$2.50 \$3.50
2 persons, \$3.00 \$3.50 \$4.00
"When in Seattle Try the Frye"

New Houston Hotel
SIXTH AND EVERETT STS.
Four blocks from Union Station. Under new management. All rooms newly decorated.
SPECIAL RATES BY WEEK OR MONTH
Rates 50c, 75c, \$1, \$1.50 Per Day.

DRUGS BY MAIL
We Pay the Postage.
If in need of Pure Drugs and Chemicals, Arch Supports, Shoulder Braces, TRUSSES, Elastic Stockings, Abdominal Supporters, Suspensory Bandages for Men, and all other Rubber Goods of every description, send to the
LAUE DAVIS DRUG CO.
Truss Experts
Third and Yamhill, Portland, Or.

BEAUTIFUL RUGS
Are made from your OLD CARPETS. Rag Rugs woven all sizes. Mail orders receive prompt and careful attention. Send for booklet.
NORTHWEST RUG CO.
E. 8th and Taylor Sts. Portland, Or.

College of Neurology and Electro-Therapeutics, Inc.,
Fits Men and Women for a life of useful and profitable work as
Drugless Practitioners
F. A. BREWSTER, M. D., DEAN
712 State, Salem, Oregon.

FREE DEVELOPING and PRINTING for YOU
For a little boasting among your friends with Kodaks. Send for information as to how you can secure credits and have your work done FREE of Charge. Write today, or send us for trial a roll of film or negatives to be printed and receive 40 per cent off.
PHOTO CRAFT SHOP, Pittcock Block,
P. O. Box 725, Portland, Oregon

\$2.50 AGATE CUTTING
FOR \$2.50 WE WILL CUT AND MOUNT YOUR AGATE IN A SOLID GOLD RING LIKE CUT. SEND SIZE OF FINGER AND AGATE.
AGATE CUTTING
140 WEST AGATE ST.
PORTLAND, OREGON

SCIENTIFIC ASTROLOGICAL Instructions: Forecasts, Readings, Horoscopes, etc. A general forecast for 5 years with special indications for 1 year; or any particular question with advice, for \$1.00, send full birth data. **ASTROLOGICAL STUDIO,** Portland, Oregon, P. O. Box 825.

STUDY bookkeeping, shorthand, telegraphy, salesmanship, English branches at an accredited school, write, or phone Main 150 for catalogue; graduates guaranteed positions. **Behrke-Walker Business College,** 167 4th Street, near Morrison, Portland, Oregon.

DAISY FLY KILLER placed anywhere, attracts and kills all flies. Neat, clean, ornamental, convenient, cheap. Lasts all season. Made of metal, cast-iron, set-over; will not soil or injure anything. Guaranteed effective. Sold by dealers, or a small box express prepaid for \$1.
HAROLD BOMERS, 150 DeKalb Ave., Brooklyn, N. Y.

Sore Eyes Granulated Eyelids, Eyes inflamed by exposure to Sun, Dust and Wind quickly relieved by **Murine Eye Remedy**. No Smarting, just Eye Comfort. At Your Druggist's 50c per Bottle. **Murine Eye Salve** in Tubes 25c. For Book of the Eye Free ask Druggists or **Murine Eye Remedy Co., Chicago**

"So you don't think censorship is practical?"
"Not at the present time," replied Senator Sorghum. "It's hard enough to keep track of the people who do mischievous things, without trying to atke complete care of those who content themselves with reckless talk."

ELECTRIC MOTORS
Bought, Sold, Rented and Repaired
WALKER ELECTRIC WORKS
Burnside, cor. 10th. Portland, Ore.

HIDES, PELTS, CASCARA BARK, WOOL AND MOHAIR.
We want all you have. Write for prices and shipping tags
THE H. F. NORTON CO. Portland, Ore.; Seattle, Wn.

WHOLESALE PLUMBING GOODS
Auto Supplies Direct to You
WRITE TODAY
FLEMING PLUMBING SUPPLY HOUSE
112 Fourth St., Portland, Ore.

SHIP Veal, Pork, Beef, Poultry, Butter, Eggs and Farm Produce
to the Old Reliable Everding house with a record of 45 years of Square Dealings, and be assured of **TOP MARKET PRICES.**
F. M. CRONKHITE
45-47 Front Street Portland, Oregon

COWPEAS GAIN FAVOR

Becoming Valued Crop Throughout the Central States.

Possesses Many Advantages Over Clover — Matures Quicker and Combines Not Only Hay Crop, But Grain as Well.

(By L. R. JOHNSON)
Farmers who have never tested the cow or stock pea should by all means try a crop of that legume this spring. Originally grown only in the South, it has spread northward and become a valued crop throughout the central states.

Belonging to the same family as red clover, it is natural to compare the qualities of the two, although in many respects they are entirely unlike.

Clover requires two years for maturity, cowpeas only three months. A stand of the clover is by no means



Mowing Cowpea Crop.

certain and in some sections has become so precarious that farmers are casting around for some other fertilizing crop to replace it.

Again, clover harvest comes in June when showers are naturally frequent and when the farmer is busy with the corn and with other work; on the other hand, peas are cut in August or September when the rush of work is over and when there is generally a dry spell. Finally, cowpeas combine in themselves not only a hay crop but a grain crop as well.

All these important advantages has the pea over the clover; and against them I can only think of the points that the pea-vines require a longer time to cure, depending on the rankness of the vines, and are a little harder to handle with the fork than clover.

On my fruit farm peas have entirely displaced clover because their season is so much shorter. With the intensive system of fruit-growing I cannot afford to give the land to clover for its long season of growth. At the same time—and I should have mentioned this in making the comparison—I believe that a heavy crop of clover is superior as a fertilizer to a crop of peas.

Before cowpeas were introduced there was no fertilizing crop with which to follow early potatoes and strawberries. In southern Missouri, on a low sandy soil, they will mature if sown after the wheat is cut and can be turned in time for the sowing of the fall wheat.

Further north in the latitude of St. Louis, they cannot be depended on to do this but they will make growth enough to be of great value to turn under.

They should not be sown until the ground is thoroughly warm and no more cold weather is to be feared, and not later than the first of July.

The Whippoorwill variety is the most generally planted when the seed is wanted, and the Clay for vine. I have noticed that late-sown peas always make the best and the most seed, for the reason that they do not make so much vine.

Simply as a money crop and with-

PESTS DAMAGE TRUCK CROPS

Spray Made of Arsenite of Soda, Water and Black Molasses Proved Efficacious in Wisconsin.

Kill the adult fly that lays the eggs and do away with the possibility of having maggots damage your onion and cabbage crops.

To control these pests use this spray which was tried last summer with success in many cabbage and onion fields:

Dissolve five grams (one-sixth of an ounce) of arsenite of soda in one gallon of hot water, add one-half pint of black molasses and stir thoroughly. Apply to the plants in coarse drops, using a sprinkler or whisk broom. In fair weather, one application a week is sufficient, but, in rainy weather twice weekly is better.

Begin to use the mixtures when the plants first appear above ground, and in the case of cabbage, continue regularly for a month or so after the plants have been set out in the field.

The dairy cow has a place on the well-planned fruit farm.

out reference to their fertilizing value, cowpeas rank among the most profitable of crops and it is rather surprising that farmers are not more alive to this point. Regular pea hullers have been of very slow introduction in this part of the country.

Peas are still hulled in wheat threshers and in consequence are badly split and shattered.

They will yield ten and fifteen bushels to the acre in favorable conditions.

Hulling, instead of damaging their value, actually seems to increase it, for it breaks up the coarse stems and shreds them into a soft mass that is eaten up clean by the stock.

Unhulled pea hay makes a forage that is unsurpassed and calls for little or no grain to supplement it when the teams are idle.

It is a fine ration for the milk cow and in fact is relished by all kinds of stock though sometimes a few days are required for them to get accustomed to it.

SILLO OF GREAT IMPORTANCE

Dairyman Who is Without Succulent Feed During Winter is Up Against Hard Proposition.

(By W. M. KELLY.)

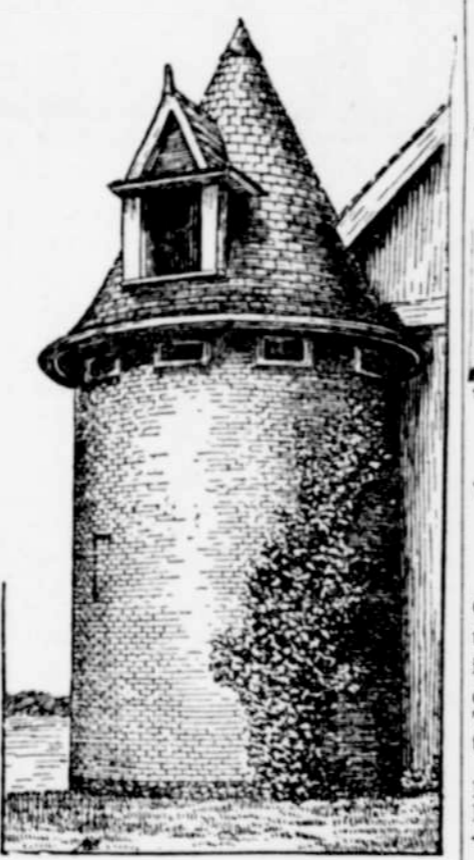
The man with a herd of good dairy cows has enough to do and enough to think about at this time of the year. I know dairymen who do not feed strippers or dry cows any grain food during the winter or early spring. This may be a cheap way of roughing them through the winter, but such methods have never returned a profit on the writer's farm.

I know that it seems a loss to feed dry cows, but it is not so much a question as to whether or not he can afford to have them become rundown in flesh condition and be unable to give a good yield of milk after they freshen in the spring.

Two pounds of good, wholesome grain food a day to each cow will help wonderfully and in connection with good ensilage and clover hay will maintain her in very good condition.

We have found early cut clover hay one of the best winter feeds for dairy cattle. We have often changed from clover to timothy hay and invariably the yield of milk would fall off.

Well-cured clover hay comes nearer to being a balanced ration than any



Brick Silo at Iowa State College.

other crop we grow on our farms. If the cow could hold enough clover hay we would not need to feed anything else, but she likes a variety, and does decidedly better when fed ensilage with her clover hay. Corn ensilage adds palatability and succulence to the ration and makes it easier to masticate and digest than dry fodder.

EARLY CABBAGE FOR MARKET

First Heads Should Be Ready Not Later Than First of July—Start Plants in Hotbeds.

Early cabbage is usually profitable. The first heads should be ready for marketing not later than the first of July. This means that the plants must be started in hotbeds or greenhouses and then transplanted to cold frames. Strong, stalky plants set in the open ground as soon as weather conditions will permit will produce marketable heads by the first of July. If a good strain of Jersey Wakefield or some other early variety is selected all of the heads should be sold before the first of August.

Skim milk has in it considerable quantities of protein and ash. When fed to calves it is valuable as a bone and muscle builder.

Watch what your neighbors are not feeding in the live stock line and feed that kind of stock.



He's telling her that nothing he received from home brought more joy, longer-lasting pleasure, greater relief from thirst and fatigue, than

WRIGLEY'S
THE FLAVOR LASTS

She slipped a stick in every letter and mailed him a box now and then.

Naturally he loves her, she loves him, and they both love WRIGLEY'S.

CHEW IT AFTER EVERY MEAL

Three of a kind Keep them in mind



ANNOUNCEMENT
VAUGHAN'S PORTABLE DRAG SAW
3 1/2" H. P. Now \$135 4 H. P. Now \$145
was \$150... was \$165
The Lightest and Strongest Drag Saw made—Can be Operated by One Man and Carried by Two Men.
Vaughan Motor Works, 475 E. MAIN
PORTLAND, OREGON

FOR SKIN TROUBLES
That Itch, Burn, Torture and Disfigure Use Cuticura—Trial Free.

A Complexion That Everyone Admires!

The Soap to cleanse and purify, the Ointment to soothe and heal. They usually afford immediate relief in itching, burning eczemas, pimples, dandruff and most baby skin troubles. They also tend to prevent little skin troubles becoming great if used daily. Free sample each by mail with Book. Address postcard, Cuticura, Dept. L, Boston. Sold everywhere.—Adv.

Don't envy a good complexion, have one. Each time you cleanse your face with Resinol Soap you give it a "beauty treatment" with the soothing, healing Resinol medication. If added, in severe cases, by a little Resinol Ointment, this usually leaves the complexion naturally clear, fresh and free from pimples, redness, roughness and blotches. Resinol Soap for the shampoo keeps the hair live, rich, and free from dandruff.

HOT?

The "Cooler" is in the bottle

Sold Everywhere

The Portland Brewing Company

Blitz