

Royal D-Lite
Comfortable
LADIES SHOES
No More **\$2.50** No Less
All Styles All Sizes
Royal Shoe Co.
148 Fourth St.
Near Morrison
Portland Oregon

SAFETY RAZOR BLADES
Sharpened, 25 and 30 a dozen. Knives and Razors ground. Automatic Keen Edge Co., 189 1/2 Fourth St., Portland, Oregon.

MISS DECKER'S PRIVATE BUSINESS COLLEGE
Shorthand, Typewriting, Bookkeeping, English Branches, Public Stenographers, Multi-graphing and Mimeographing. Personal attention. Positions when competent. New Alisky Bldg., Cor. 3rd and Morrison, Portland, Oregon.

Double Tread Puncture Proof Tires
Made from your old ones. Last long as brand new. Write us. OREGON VULCANIZING CO., 650 Washington St., Portland, Ore.

HIDES, PELTS, CASCARA BARK, WOOL AND MOHAIR.
We want all you have. Write for prices and shipping tags. **THE H. F. NORTON CO.** Portland, Ore., Seattle, Wash.

SHOE AGENTS WANTED
MEN AND WOMEN
NO EXPENSE NO INVESTMENT
Take orders for Rosenthal's Shoes. Act as exclusive agent. Write today for instructions. Make \$15.00 to \$40.00 weekly; others do.
ROSENTHAL'S
151-163 Post St., San Francisco, Cal.

New Houston Hotel
SIXTH AND EVERETT STS.
Four blocks from Union Station. Under new management. All rooms newly decorated. **SPECIAL RATES BY WEEK OR MONTH**
Rates 50c, 75c, \$1, \$1.50 Per Day.

PRINTERS AND PUBLISHERS, ATTENTION!
PERFECT PRINTING PLATES
Furnished on short notice. Write for Scale of Prices. Portland Electrotype & Stereotype Co., Front & Stark, Portland, Or.

Oregon Hernia Institute
Rupture treated mechanically. Private fitting rooms. Highest testimonials. Results guaranteed. Call or write.
JOHNSON & UMBARGER
411-412 Alisky Building, Portland, Oregon

ANOTHER LINK
In the endless chain of satisfied cream shippers
Gaston, Ore.
Hazelwood Co., Portland.
Gentlemen:—We have always been well pleased with the Hazelwood Co. and whenever we have more veal or cream we will surely ship to you. Yours truly, H. E. S.
Original on file in our office for inspection.
Why not ship us your cream, Mr. Dairyman? Prompt returns, correct tests.
HAZELWOOD CO., Portland

Banquet is Held in Barn While Cows Are Milked.
For the purpose of emphasizing the sanitary condition of the dairy of the state hospital at Napa, Calif., the Napa County Live Stock Association held its annual banquet in the barn where the cattle are kept, according to the August Popular Mechanics Magazine. Long tables were placed in an area between rows of stalls, and covers laid for 120 persons. In the same room with the banqueters were 200 cows in their stalls. While the men ate, the cows were milked by the employees of the dairy.

Different.
Hostess (at party)—Does your mother allow you to have two pieces of pie when you are at home, Willie?
Willie (who has asked for a second piece)—No, ma'am.
"Well, do you think that she'd like you to have two pieces here?"
"Oh," confidently, "she wouldn't care. This isn't her pie."—Philadelphia Public Ledger.

Ship Veal, Pork, Beef, Poultry, Butter, Eggs & Farm Produce
To the Old Reliable Evering house with a record of 45 years of Square Dealings and be assured of
Top Market Prices.
F. M. CRONKHITE,
45-47 Front St., PORTLAND, ORE.
P. N. U. No. 31, 1916

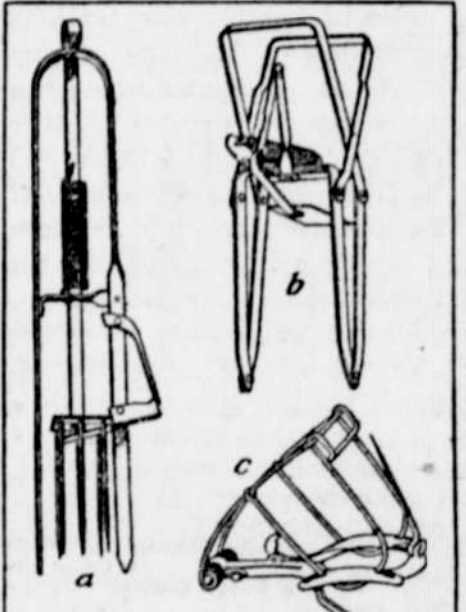
WHEN writing to advertisers, please mention this paper.

DAMAGE BY MOLES

In Most Cases, However, Animal Is Most Beneficial.

Use of Specially Designed Trap is Most Effective Method of Freeing Infested Ground—Three Devices Described.

(From the United States Department of Agriculture.)
The common garden mole, which, because of its insectivorous habits, is in most situations much more beneficial than harmful, is a decided nuisance when it invades a well-kept lawn or a newly planted seedbed. Many reports of its damage to lawns are received by the department, and also frequent complaints of destruction of potatoes, bulbs, and plants which is wrongly attributed to the mole. Damage to plants and tubers is generally the work of pine mice or meadow mice, usually the former. The burrowing habits of pine mice closely resemble those of the mole, and they frequently use mole tunnels to reach growing plants. Pine mice may easily be killed with poisoned grain, but as moles will seldom take poisoned baits of any kind, the main dependence for destroying them is traps, and considerable experience and judgment are required to use them effectively.
The ordinary traps intended for rats and other rodents are useless for taking moles. Special mole traps, of which there are on the market three general types, are required. These may be designated as the harpoon, the scissor-jaw, and the choker types.



Mole Traps—*a*, Harpoon; *b*, Scissor-Jaw; *c*, Choker.

marked *a*, *b*, and *c*, respectively, in the accompanying illustration. Harpoon traps are intended to impale the mole in the soil by spring-driven spikes. Scissor-jaw traps are to be set astride the runway to grasp the mole when it attempts to pass in either direction. The choker trap has a pair of wire loops that encircle the burrow when the trap is set. All these traps are sprung by the same sort of mechanism—a trigger pan resting on a depressed place in the mole ridge in such way as to be lifted when the animal passes beneath. No part of a set mole trap should ever be in the runway, as its presence makes the animal avoid the obstruction by burrowing around or below it.

Directions for Setting Traps.
Only general directions for setting mole traps can be given here, nor are detailed instructions necessary, since the makers of traps usually furnish specific directions for using them. A mole trap can be successfully operated only when set on that part of a mole runway which is near the surface and has the soil raised into a distinct ridge, newly worked. Freshly broken soil usually indicates that the tunnel is in use. When in doubt, the

GENERAL FARM NOTES

Tankage makes pigs grow fast.
Drainage improves alkali soils.
Pure seed, like purebred stock, is one of the farmer's greatest assets.
Standing in wet manure tends to make the feet of the horses tender.
Our fields will soon be overrun by an army of invaders—swat the weeds.
We need pasteurized swill barrels as well as pasteurized milk in the hog lot.
The ear test is the only reliable method for checking losses from bad seed.
Neither the scrub nor the poorly fed animal can pay a profit on high-priced land.

operator may make a small break in the ridge and observe whether the mole repairs it within a few hours. In placing a trap, one of the stretches of the runway that leads in a definite direction should be chosen rather than one of the turns that may not be regularly traversed by the mole.

Before setting the trap, it is well to ascertain the course of the burrow by thrusting down a lead pencil, or stick of similar size. The trap selected should then be lined up with the course as nearly as possible; the jaws of the scissor-jaw type should straddle it, the loops of the choker type should encircle it, and the spikes of the harpoon type should be directly above it. In the case of the harpoon type, it is best to force the impaling spikes into the ground once or twice to facilitate their penetrating into the burrows when the trap is sprung. It is desirable also, in setting any of the traps, to depress only that part of the ridge immediately under the trigger pan, using the hand instead of the foot for this purpose. A little earth or a small chip of wood may be placed under the pan if necessary. The trigger catch should be set as lightly as possible, and one should avoid stepping on any part of the runway near the trap. It will pay to visit traps at least twice a day.

Moles are persistent in repairing breaks in their tunnels and may often be surprised at their work. It is easy then to capture the animal by impaling it with a fork or throwing it out by a quick thrust of spade or shovel. A section of the runway may first be broken open or leveled and the place watched until the animal is observed moving the soil.

Moles are sometimes trapped in empty glass jars, gallon size. The jar should be set along a main mole runway that has been long in use. A narrow excavation, deep enough to receive the jar and allow its top to be somewhat below the bottom of the tunnel, should be made. The sod may then be replaced over the excavation so as to bridge without obstructing the entrance to the jar. The animal in coming along the tunnel falls into the jar and cannot climb out. Success depends much on the skill used in placing the trap.

Repeated leveling of mole ridges on a lawn by means of a roller not only tends to discourage the animals from making further incursions, but prevents the soil from drying out and thus injuring grass roots.

For further information about the mole, its habits, and methods of control, the reader is referred to Farmers' Bulletin 583, "The Common Mole of the Eastern United States."

ROOT CROPS FOR LIVE STOCK

Big Tonnage Secured From Beets and Mangels—Plants Draw Especially Heavy on Phosphorus.

Sugar beets and mangels grown for stock will produce big tonnages. Mangels like a rather cool climate and sugar beets are grown successfully in about the same general latitude that grapes are produced easily and somewhat north of that belt, says a writer in Farm and Home.

Put your root crops in a good fertile soil, plowed deep and well tilled, if you expect a heavy tonnage. Work up a good seedbed and if the land is not already very rich put on some well rotted manure after plowing. Root crops draw especially heavy on phosphorus.

Plant the beets in drills with the rows far enough apart that cultivation is not difficult. Put the rows 20 to 30 inches apart. Plant about corn-planting time. You will have to hoe and thin them by hand.

Curry Lightly.
In currying the horse, don't dig too hard on the underside. This is a tender place, so curry lightly.

Bee Raising as Side Line.
Bee raising makes a good side line for a fruit or vegetable grower.

To the farm boy who wants to mix with big things: "Nothing is bigger than agriculture."

A hog-tight fence around your doorway is the first step toward beautifying the farm home.

Deep plowing increases the supply of water that the soil can carry without injuring the crop.

Live stock and soil fertility go hand in hand. Rich soils and big crops make another loving couple.

It takes as much fertility and moisture to raise weeds as for corn, and sometimes the corn is thus robbed of both.

See that the entrance to the farm is neat and clean. Appearances may be improved by a group of shrubs at either side.

Experiments have shown that the greatest gains in fattening are made by young stock when two to four months old.

FALL TERM OPENS TUESDAY, SEPT. 5, 1916
Bookkeeping Shorthand Typewriting Penmanship
Letter Writing Arithmetic Commercial Law
and all commercial subjects taught by experienced teachers.
Civil Service training a specialty. The demand for our Graduates exceeds the supply. Write Today for Free Illustrated Catalogue.
LINK'S BUSINESS COLLEGE
A. T. LINK, Principal.
Phone Main 5083 Tilford Bld'g, Tenth and Morrison Sts., Portland, Or.

KC BAKING POWDER
Passed by the Board of Censors
1st—The manufacturer with the rigid tests of the laboratory and factory.
2nd—The wholesale grocer with his high standing and desire to handle only reliable goods.
3rd—The retail grocer who desires to handle only those brands he knows will please his customers.
4th—The food officials with their rigid laws for the purity and wholesomeness of food products.
5th—And most important, you, the housewife with your desire for purity, efficiency and perfect satisfaction.
ASK YOUR GROCER — HE SELLS IT
25 Ounces for 25¢
(More than a pound and a half for a quarter)

AUTO WRECKING PARTS FOR 1-2
Parts over 50 makes and models, at half the regular price. Buy your used auto parts from an old-established and reputable dealer, who has a reputation to protect and conducts the largest parts store and carries the largest complete assortment of used auto parts of any company this side of Chicago. Our prices are less, and for this reason we outsell all others. All parts are guaranteed to be in first-class condition.
MOTOR PARTS MFG. CO.
Incorporated.
323-325-327 BURNSIDE ST., PORTLAND, OR.

BUY DIRECT
Do Your Own Plumbing
By buying direct from us at wholesale prices and save the plumber's profits. Write us today your needs. We will give you our rock-bottom "direct-to-you" prices. f. o. b. rail or boat. We actually save you from 10 to 35 per cent. All goods guaranteed.
Northwest headquarters for Leader Water Systems and Fuller & Johnson Engines.
STARK-DAVIS CO.
212 Third Street. Portland, Oregon

Her Next Branch.
Young Lady—How is it you don't come to Sunday school, Kate?
Kate—Oh, please, miss, I'm learning French and music now, and mother doesn't wish me to take up religion till later.—Boston Transcript.
To Breathe in New Shoes.
Always shake in Allen's Foot-ease, a powder, it cures hot, sweating, itching, swollen feet. Cures corns, ingrowing nails and bunions. At all druggists and shoe stores, 25c. Don't accept any substitute. Sample mailed FREE. Address Allen S. Gimsted, Le Roy, N. Y.

High Cost of Life.
Wayne—Brown does a lot of entertaining at his country place.
Payne—Does he succeed in growing anything?
Wayne—His mortgage has grown from \$2,000 to \$5,000 since April, and will probably jump another thousand before August.—Pittsburgh Dispatch.
Easily Read.
They were at an afternoon reception and were absorbed in watching the finely gowned women.
"I think Mrs. Cameron is so sweet, don't you, Helen?" asked Inez. "You can read her character in her face."
"Yes," replied Helen, sarcastically, "you can if you read between the lines."—National Monthly.

A Famous Physician's Wonderful Discovery
After a series of careful experiments and tests at the Invalids' Hotel and Surgical Institute, Buffalo, N. Y., covering many years—Dr. Pierce, the medical director of that hospital made announcement that he could prove that a medicine which he called "ANURIC" was the best uric acid solvent now to be had. As a remedy for those easily recognized symptoms of inflammation—as scalding urine, backache and frequent urination, as well as sediment in the urine, or if uric acid in the blood has caused rheumatism, lumbago, sciatica, gout, it is simply wonderful how quickly "Anuric" acts; causing the pains and stiffness rapidly to disappear.
Swollen hands, ankles, feet, are due to a dropsical condition, often caused by disordered kidneys. Naturally when the kidneys are deranged the blood is filled with poisonous waste matter, which settles in the feet, ankles and wrists; or under the eyes in bag-like formations.
It is just as necessary to keep the kidneys acting properly as to keep the bowels active.
The very best possible way to take care of yourself is to take a glass of hot water before meals and an "Anuric" tablet. In this way it is readily dissolved with the food, picked up by the blood and finally reaches the kidneys, where it has a tonic effect in rebuilding those organs.
Step into the drug store and ask for a 50-cent package of "Anuric" or send Dr. Pierce 10c. for trial pkg. "Anuric"—many times more potent than lithia, eliminates uric acid as hot water melts sugar. A short trial will convince you.