

# FALL OPENING

We announce our FALL OPENING commencing ON WEDNESDAY, SEPTEMBER 17th, at 10 A. M. and continuing until 10 P. M. Saturday evening

You will be shown something new and attractive in every department of our New Store. We are receiving new goods every day. Never before has our stock been as complete as it is now. We cordially invite you to visit our store and see the bargains we have in both staple and fancy goods. One of the GREAT ATTRACTIONS of this opening is the exceptional bargains and to give you an idea of these values, we quote prices as follows:

Men's Suits, regular price, \$20.00.....now \$14.98	Men's Hat's, regular price, \$1.50.....now \$ .98	Children's Sweaters, regular price, \$1.50...now \$ .98
Men's Suits, regular price, \$18.00.....now \$13.73	Men's and Boys' Hats, regular price, \$1.00...now \$ .79	Children's Sweaters, regular price, 60c....now \$ .47
Men's Suits, regular price, \$15.00.....now \$10.49	Children's Hats, regular price, 65c and 75c...now \$ .49	Ladies All Wool Dress Goods in several varieties:—
Men's Suits, regular price, \$12 and \$15...now \$ 9.27	Men's and Boy's Caps, regular price, 50c and 60c.....now \$ .19	Broadcloth, regular price, \$1.25.....now \$ .98
Men's Pants, regular price, \$3.00 and \$3.25, now \$ 2.56	Men's and Boy's Caps, regular price, 25c and 35c.....now \$ .13	Voiles, regular price, \$1.75.....now \$ 1.00
Men's Pants, regular price, \$2.50.....now \$ 1.89	Men's Heavy Shoes, regular price, \$3.00...now \$ 2.29	Voiles, regular price, \$1.40.....now \$ .85
Men's Pants, regular price, \$1.75.....now \$ 1.28	Men's Heavy Shoes, regular price, \$2.50...now \$ 1.89	Voiles, regular price, \$1.50.....now \$ .89
Boys' Suits, regular price, \$9, \$9.50, \$10...now \$ 7.69	Men's Dress Shoes, regular price, \$5.50...now \$ 3.98	Prunella Cloth, regular price, \$1.75....now \$ .89
Boys' Suits, regular price, \$5, \$5.50, \$6...now \$ 3.87	Men's Patent Leather Shoes, regular price, \$4.50.....now \$ 2.98	Cashmere, regular price, 50c.....now \$ .35
Children's Suits, regular price, \$3.50, \$4...now \$ 2.89	Men's Vici Shoes, regular price, \$2.50...now \$ 1.89	Wool Mixed Plaids, regular price, \$1.00...now \$ .65
Boys' Knee Pants, regular price, 75c, \$1...now \$ .59	Boy's Shoes, regular price, \$2.50.....now \$ 1.89	Wool Mixed Plaids, regular price, 50c...now \$ .25
Boys' Knee Pants, regular price, 50c, 60c...now \$ .39	Boys' Shoes, regular price, \$1.75.....now \$ 1.49	Ladies' High Top Shoes, regular price, \$4.50...now \$ 3.29
Men's Wool Sweaters, turtle neck, regular price, \$5.00.....now \$ 2.89	Boys' Shoes, regular price, \$3.00.....now \$ 2.49	Ladies' Shoes, regular price, \$3.50.....now \$ 2.69
Men's Jersey Wool Sweaters, regular price, \$1.75.....now \$ 1.29	Ladies' Sweaters, regular price, \$2.20...now \$ 1.87	Ladies' Shoes, regular price, \$2.25.....now \$ 1.98
Men's Dress Shirts, regular price, \$1.50...now \$ .69	Ladies' Sweaters, regular price, \$1.50...now \$ 1.29	Ladies' and Men's Oxford's at One-Half Price
Men's Dress Shirts, regular price, \$1.25...now \$ .47	Children's Sweaters, regular price, \$2.50...now \$ 1.13	Broken lines in Ladies' and Misses' Underwear at greatly reduced prices
Men's Hats, regular price, \$2.50 and \$3.00...now \$ 1.89		Children's Heavy Underwear, regular price, 60c and 75c.....now \$ .26
		Misses' Hosiery, regular price, 20c.....now \$ .13

**Big Reduction in Misses' and Children's Shoes**  
Our Bargain Department is now filled with winter goods and it will be of interest to you to visit it.  
We give *A. G.* Green Trading Stamps and are the only Dry Goods Store in town handling them. We have the Premium Parlors in our Gallery where the beautiful and extensive line of Premiums may be seen.

Don't forget to bring the Babies. We have a Baby's Bed in the Rest Room at your disposal. As previously announced we will give a present to all babies born between August 1st, 1913, and January 1st, 1914, if brought to our store and weighed.

Chase & Sanborn Coffee and Tea served during the four days of Our Opening.

We take measurements for Ladies' tailored suits, coats dresses, and skirts.

Also Men's tailored suits and guarantee a fit.

## A. G. HOFFMAN AND COMPANY.

### Purely Personal

Miss Eunice Bernard of the Good Samaritan hospital was visiting with her parents Mr. and Mrs. H. R. Bernard.

Carl Connett of Portland visited in town Sunday.

Mrs. C. F. Elder of Seattle visited at the A. L. Sexton home in this city the past week.

Mrs. L. C. Baird and daughter, Mabel, spent several days visiting friends and relatives in Portland and Vancouver this week.

Mr. Edwin Eells, of Tacoma, was visiting in Forest Grove last week, on his way to school at Oberlin College, in Ohio.

Mrs. Iza Mallory and daughters, Mona and Gladys were Portland shoppers Saturday.

Mrs. B. P. Walker spent Sunday with Greene Lilly and family at Hillsboro.

Mr. and Mrs. E. J. McAlean and son Lowell, of Hillsboro, visited with Mr. and Mrs. D. N. Morris Sunday.

Mrs. Oliver Corl, of Eastern Oregon, formerly of this city, was visiting friends and relatives in this city Sunday.

Prof. Shippey, formerly of Pacific University has moved his family to Pullman Wa. where he has accepted the position as professor of Washington State College at that place.

A. Eglund, of Bisbee, North Dakota, committeeman of the North Dakota Building and Exhibits at the Panama Exposition visited Mr. and Mrs. A. McKay Wednesday for a few hours while en route to San Francisco.

Mr. J. S. McClaren of Portland is spending a few days visiting Mrs. Upton.

#### WHOLESALE PRICES

##### Grain, Hay, Flour, Etc.

Wheat—Track prices: New club 73 to 79c; bluestem, 85 to 86c; fortyfold, 79 to 80c; red Russian, 78c; valley, 80c.

Flour—Patents, \$4.70; straights \$4.00 to 4.10; exports, \$3.55 to 3.65; Valley, \$4.70; graham, \$4.60; wholewheat, \$4.80.

Hay—Track Prices: Idaho timothy, \$17 to 18; Eastern Oregon timothy, \$15 to 16; alfalfa, \$12 to 13; grain hay, \$10 to 11; clover \$9 to 10.

Oats—Best white, new \$25 to 25.50; per ton.

Barley brewing—\$25 to 25.50; feed 23 to 24; rolled \$27 to 28.

Millstuffs—Bran \$24 to 24.50 per ton; middlings, \$30 to 31; shorts, \$26 to 26.50

##### Butter, Eggs and Poultry.

Country Dressed Meats—Pork, fancy, 12 to 12½; veal, extra, 15c to 15½c; heavy 9 to 12c.

Cheese—Full Cream, twins and triplets, 17 to 17½c; Young Americans, 18 to 18½c; cream brick, 22c; Swiss block, 24c.

Butter—Oregon creamery cube 34c per pound. Butter fat delivered 34c per pound.

Poultry—Hens, 16 to 16½c broils and fryers, 17½ to 18½c; ducks, young, 10 to 12c; geese, young 10 to 12c.

Eggs—Oregon ranch, case count

28 to 29c per dozen; candled 32 to 33c.

##### Fruits and Vegetables.

Fresh Fruits—apples, new, \$1.00 to 2.00 per box; pears 75c to 1.00 per box; cantelopes, \$1.25 to 1.75 per crate; oranges, \$4.50 to 5.50 per box; blackberries, \$1.00 to 1.25 crate; lemons, \$3.50 to 9.50 box; pineapples, 8c per pound grapes \$1.00 to 1.35 per crate; peaches, 40 to 50c per box; plums 75 to \$1.00 per crate; watermelons, \$1.00 to 1.25 per hundred.

Potatoes—New Oregon, \$1 to \$1.10 per hundred; sweets \$2.00 to \$2.25.

Vegetables—Cabbage, \$2 to 2.25 per cwt; peppers 10c at 15c a pound; garlic, 7 to 8c a pound; cucumbers, 35 to 50c a box; artichokes, \$1 to 1.25 dozen; tomatoes 40 to 50c per box; green beans 2 to 3c per lb; celery 75 to 85c; rhubarb 1 to 2c a pound; egg-plant, 6 to 7c a pound; corn, 15 to 20c per doz; peas 5 to 6c a pound; onions, \$1.00 to 1.25 per sack.

##### Wool Hops Etc.

Wool—Eastern Oregon, 10 to 16c a pound; Valley, 16 to 18c.

Hops—1912 crop, 16 to 18c; contracts, 17 to 18c; fuggles 21 to 22c

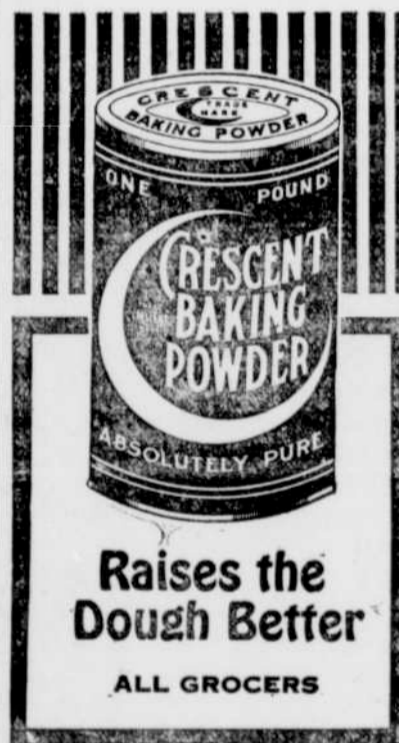
Mohair—1913 clip, 25 to 26c pound.

##### Livestock, Portland Yards

Cattle—steers, prime, \$8 to 8.25; good to choice, \$7 to 7.50; common to fair, \$5 to 6; cows, top, \$7 to 7.25; fair to good, \$6 to 6.50; bulls, \$4.50 to 5.50; stags \$5 to 6; calves, \$8 to 9.

Hogs—Best, \$8.50 to 9.00; common to good, \$7.75 to 8.25.

We now have on exhibition an extraordinary display of fall and winter millinery—Millinery parlors near postoffice.



#### WM. WEITZEL

Tinning and Plumbing, Sheet Metal Work and Repair Shop.

North First Avenue, between Main and "A" Streets; phone 863.

#### A. A. KIRKWOOD

CIVIL ENGINEER AND SURVEYOR

Municipal Engineering Surveying and Subdividing Phone 482

Abbot Building

FOREST GROVE, OREGON

PRESS Job Printing Satisfies



#### The Present Day Music Machine

The wonderful COLUMBIA now takes the place of all other musical instruments.

With all the improvements, and the highest of perfection to which they have attained, yet the prices have steadily been lowered until now it is within reach of every family to have a first-class COLUMBIA GRAPHOPHONE and a fine selection of Double Disc Records.

Only a \$5 bill down! You have the use of the machine while you are paying the rest at \$1.00 per week.

We are exclusive agents for the COLUMBIA.

#### Little's Pharmacy

THE PRESCRIPTION SPECIALIST

Phone 901

### FALL OPENING

### ANNOUNCEMENT

Friday and Saturday, September 12 and 13

### THE HAT SHOP

Invites its many friends and customers to inspect a full display of everything that is new and up-to-date in the millinery world

MRS. L. I. LOMBARD

Two Doors West of the Forest Grove National Bank

SHORB BLDG.

PACIFIC AVE.