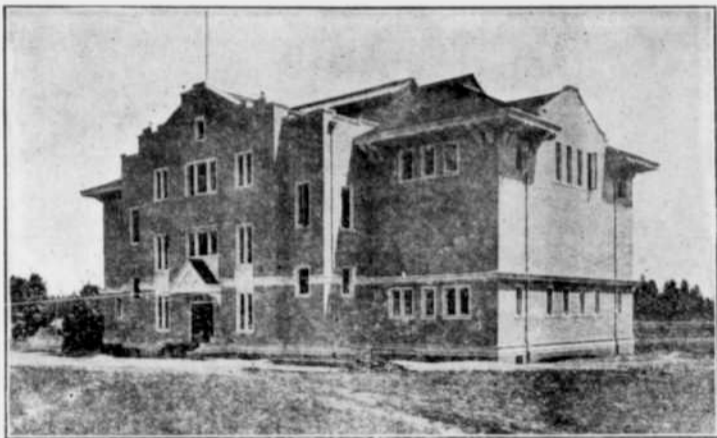


Supplement to Forest Grove Press, August 25, 1910

The New Gymnasium of Pacific University

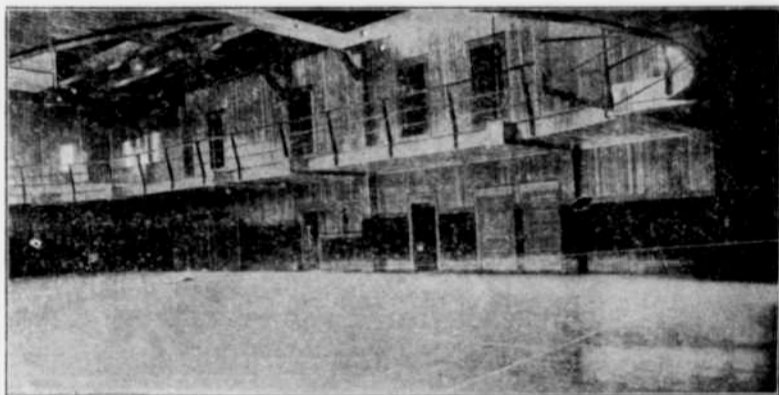
The *Gymnasium* is the newest of the college buildings. It replaces the old building which for many years has supplied as well as an incomplete building could the athletic needs of the student-body.



Pacific's New Gymnasium

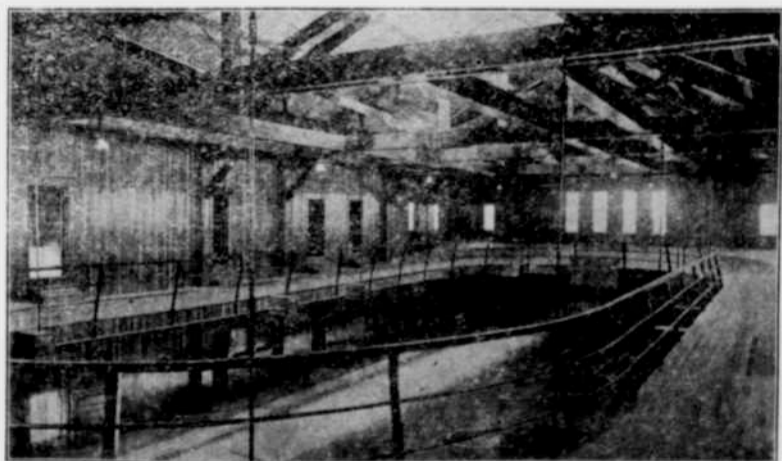
It is a substantial structure, exceptionally pleasing in external appearance, and with its interior arrangement so planned as to give a maximum of efficiency with a practical economy of space.

The main entrance opens directly upon a corridor of generous size. Immediately at the left is the "trophy-room" and ticket-office. And at the right, the stairs to the main Gymnasium floor above. These stairs are designed for the use of the general public, there being other stairways for the use of students leading up from the locker-rooms, that for the girls at the north end of the building, and that for the boys at



Main Floor of Gymnasium

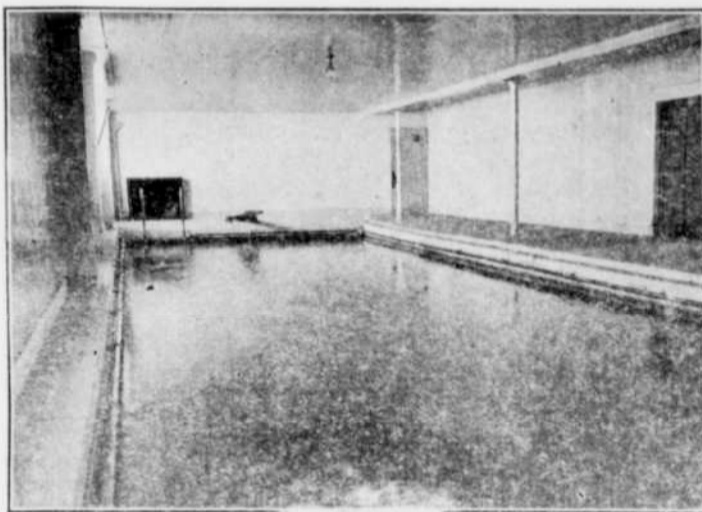
the south end. At the farther end of the corridor is a door that opens into the visitors' "Cage" which looks out upon the swimming-pool. Doors at the right and left respectively lead into the locker rooms for the boys and the girls. These are fitted with steel lockers of the most approved type fitted with keyless "time-locks".



Gallery-Running Track

From the locker-rooms are doors opening into well-appointed shower-rooms, through which the students must pass in reaching the swimming-pool. There are also suitably arranged toilets adjacent to the shower-rooms.

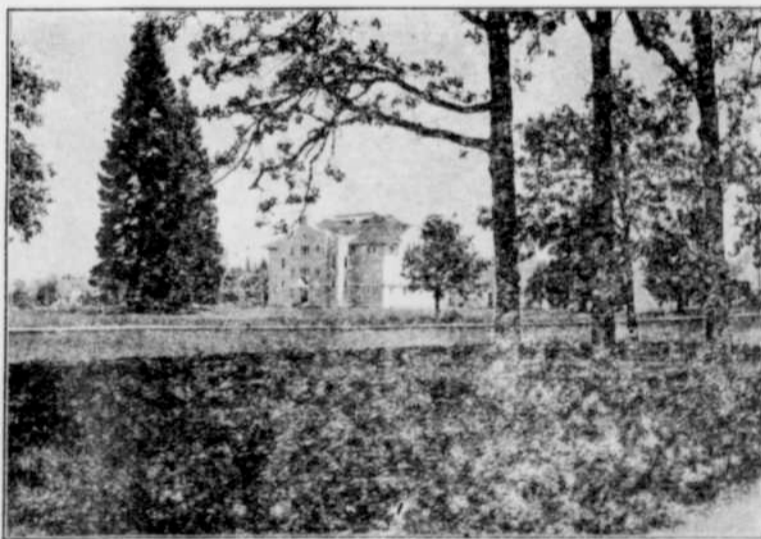
The Swimming-pool is of regulation size, 20 by 60 feet, with depth varying from four feet at one end, to nine feet at the other end. It is substantially constructed of reinforced concrete, and made thoroughly water-proof with several layers of asphalt and cloth in its structure. It has concrete steps at one end, and a ladder and spring-board at the other; also brass rails along all the sides just below the top. The floor and baseboard of the room about the pool are of terrazzo, a combination of cement and marble, and the walls and ceiling of the room are enameled in white.



Swimming-Pool

On the floor above is the main gymnasium, 50 by 100 feet, equipped with necessary apparatus of most approved type. It provides abundant space for the usual class-work and calisthenics, also for basketball, hand-ball, and indoor baseball. Rooms for the Director, and the examiner are located conveniently adjacent.

A gallery with its concave running-track extends around the main gymnasium, and is suspended by iron rods from the heavy trusses of the roofing. The running-track is twenty-three laps to the mile, and is covered with heavy cork-carpet.



The "Gym" from Across the Campus

The gymnasium is well-lighted by windows about the gallery, and by a large sky-light 14 by 36 feet; while three large ventilators, aggregating 30 feet in length, placed in the ceiling, provide plenty of pure air.

The students, boys and girls alike, will enjoy and appreciate the new gymnasium. By its use athletics at Pacific will be put upon a more systematic basis than has heretofore been possible.

Mr. James O. Colville, of Salt Lake City, who has had large experience as an instructor in Athletics, has been secured as Physical Director. He will have charge of the gymnasium and direct its classes.