

CLACKAMAS COUNTY NEWS

L. J. ANDERSON Editor and Publisher
Published weekly on Fridays at Estacada, Clackamas County, Oregon. Entered in the postoffice at Estacada, Oregon, as second class matter. Subscription rates in Clackamas County one year \$3.00; outside the County and in the State of Oregon one year \$4.00; outside the State of Oregon, one year \$4.50. Subscriptions payable in advance.

STAFF CORRESPONDENTS

Garfield Mrs. Ray Gordon
Viola Mrs. Lafayette Fouts
George Mrs. Joe Wiederhold
Eagle Creek Mrs. Margaret Ross
Dodge Mrs. Anne Justice
Currinsville Mrs. Nellie Currin

Patronize your local 'News' job printer

Every production of genius must be the production of enthusiasm.

—Disraeli

Carroll Funeral Home

Phone MOhawk 5-3794 Gresham, Oregon
Day and Night Service - A Local Institution

CUT YOUR INCOME TAX!

Here's How To Do It--

With a Checking Account
At This Bank!

Many people overpay this Federal Income Tax because they keep NO accurate record of allowed deductions.

With a checking account you can easily keep such a record which may be worth many dollars to you. The record is actually kept in your check book.

Stop in at the Clackamas County Bank today and let us show you how to use your checking account to

REDUCE TAXES.

Clackamas County Bank

SANDY, OREGON

Serving Eastern Clackamas County Since 1911
Member Federal Deposit Insurance Corp.

NOTES BY THE WAYSIDE

(Continued From Page 2)
a tendency to push the head against a hard stationary object such as a fence or manger. The temperature and appetite often remain normal for a time, the action of the poison generally progressing slowly but gradually the temperature may increase. In cattle feeding on green fern, bloody discharges, from the nose, mouth and rectum, may occur until eventually the animal falls and dies.

"Other damage— Probably the single greatest damage caused by Bracken fern is its tendency to furnish fuel for forest fires. In forest openings it makes an enormous growth that dies each year and so accumulates a great tonnage of material, that in dry seasons, burns with vast heat and flame, thus carrying the fire and perpetuating it. E. R. Jackman, Extension Range Crops Management Specialist.

Equally interesting and informative are the authors treatment of:

Horsetail arrowgrass, death camas, false hellbore, halogeton, greasewood, buttercup, larkspur, western chokeberry, lupine, loco, St. johnswort, poison hemlock, western water hemlock, water celery, water parsnip, fools huckleberry, labrador tea, rhododendron, milkweed, fiddleneck, tansy ragwort, horse brush, coal oil brush, sneezeweed, cocklebur, and other minor poisonous plants.

The publication is enlivened by frequent contributions by E. R. Jackman, Oregon's well-known range crops specialist.

We ordered an immediate supply for distribution by the Agricultural Extension office, Post-office bldg. Oregon City.

NEW 4H & FFA BUILDINGS AT OREGON STATE FAIR

Good progress is being made on construction of the new 4H and FFA buildings at the Oregon State Fair and barring unforeseen delays the contractors will turn them over to the State Fair Commission August 1 substantially completed.

Construction of the truss type roof at the FFA building is now under way. This building will be 92x112 with a roof span of 80 feet. It will be largely an open building, suitable for farm machinery and other similar exhibits by FFA members. One end will be enclosed for indoor projects.

The huge 4H building is in three sections, joined by roofed corridors. In one section will be a kitchen and cafeteria seating about 700.

Another section contains 18 dormitory rooms in addition to shower and toilet rooms and several smaller rooms for leaders. Dormitories will be equipped with double bunks.

The third section is the exhibit hall and auditorium with a large mezzanine floor. This part of the structure is 116x216 with a stage at one end. The roof is supported by scissors-type structural beams with spans of 68 feet. There will be

demonstration areas in this hall for 4H dollar dinners and adjoining kitchens. Floors and walls of all buildings are of concrete.

SKYLINE ROAD IS NOW OPEN Says FOREST SERVICE

Supervisor Paul Neff, Mt. Hood National Forest, announces that the Skyline road from Clackamas Lake to Olallie Lake is now open for public travel.

The Olallie Lake resort with boat and cabin rentals and the Forest Service picnic grounds are also open, however, the campground units on the south end of the lake are still covered with snow.

The road from Detroit to Breitenbush Lake suffered severe washing due to unseasonal fall use and while it's passable it is extremely rough and travel should be with caution.

The road from Olallie to

Breitenbush is still blocked with snow drifts and is not expected to open until July 4.


'News' Want Ads Bring Good Results

ELECTRIC HOME FREEZER...

LESS THAN 2¢ A DAY

PGE electricity is the biggest bargain in your family budget. Use all you want for gracious living.

PORTLAND GENERAL ELECTRIC COMPANY
Oregon's Pioneer Electric Utility



Air Conditioning—temperatures made to order—for all-weather comfort. Get a demonstration!

*You can't help but come out ahead! Here's the most thoroughly new car in its class. Lower, wider, longer, loaded with new ideas right down to its ride. Yet Chevrolet is the lowest priced of the low-priced three in the models most people buy!**

That beautiful Bel Air below, plus seven other Chevy V8 sedans, hardtops and station wagons, is priced below all comparable models of the low-priced three. They all bring you the incredibly smooth action of Full Coil suspension—or a real air ride as an extra-cost option. They offer Chevy's spirited V8 action, its famous handling ease along with all kinds of features that other cars in the field just wish they had. Your Chevrolet dealer will be glad to prove it!

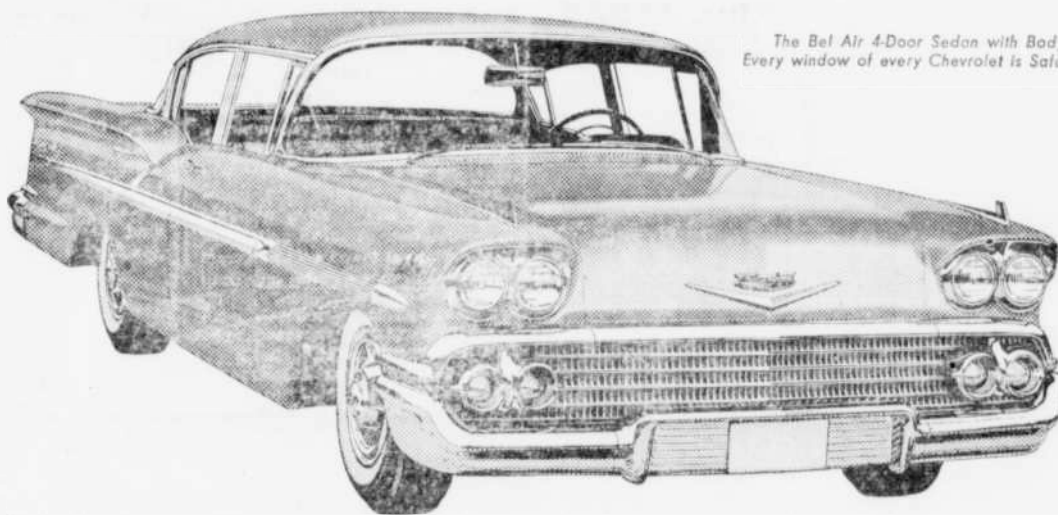
CHEVROLET

The only all-new car in the low-price field.

*BASED ON LIST PRICES FOR COMPARABLE SEDAN AND HARDTOP MODELS.

In the models most people buy

CHEVY GOES AT THE



The Bel Air 4-Door Sedan with Body by Fisher. Every window of every Chevrolet is Safety Plate Glass.

LOWEST PRICE!*

See your local authorized Chevrolet dealer

Miller Chevrolet Service
Estacada, Oregon

Doggone clean Housewarmer heat!



AT ESTACADA EVERY WEDNESDAY

GRESHAM SEED & FEED CO.

Gresham, Ore. Phone MO 5-2186

What Makes You The World's Best Shopper?*

*IT'S THOSE CLIPPINGS IN YOUR HAND!



It's a fact that American women are the most qualified shoppers in the world. Because of the intensity of newspaper advertising, American women have more information about more products, and so can compare value and price to get the most for their money. The largest single advertising voice in our country is the local newspaper. And what's more, take it with you when you shop. Or you can clip the ads out, as reminders to you to take advantage of the bargain you read about.

SHOP THE STORES THAT ADVERTISE IN YOUR HOMETOWN NEWSPAPER!

OREGON NEWSPAPER PUBLISHERS ASSOCIATION, INC.
311 ALLEN HALL P.O. BOX 5155 EUGENE, OREGON