

## Classified Ads

### RATES

Ads. accepted for this column at 1 cent per word, minimum charge 25 cents, three insertions for the price of two. Cards of thanks, 50 cents. A bookkeeping charge of 10 cents is made for all classifieds not paid in advance.

### For Sale—Farm Products

CONCORD GRAPES—Three cents per pound, delivered. J. J. Marchbank, Phone 25-4. 52tf

FOR SALE—Ginseng seed, Golden Seal seed, also Golden Seal plants. J. J. Marchbank, Estacada. s14tf

GINSENG PLANTS for sale; two years old. W. R. Woodworth, Estacada, Oregon. o17

FOR SALE—Concord grapes, 3 cents per pound; pick them yourself. Kinney & Lamberson place, three miles east of Estacada, opposite Garfield grange hall. 52 tf

### For Sale—Farm Implements

One Iron Age potato planter for sale or will trade for cattle or sheep. P. W. Douglass, 1-2 mile below Currinsville store. o19

WAGON FOR SALE or will trade for pigs or chickens. W. C. Vanhoy, Route 2, Estacada. o12

USED CREAM SEPARATORS, gas engines, spreaders, drills, tractors. Hessel Implement Co., Gresham.

### For Sale—Livestock

FOR SALE—Purebred O. I. C. pigs, 8 weeks old. A. W. Schunke, Garfield dist., Route 1, Estacada. 1t

One large young sow, will farrow around the 20th of this month with second litter. Twenty-seven pigs, just weaned. One male hog, one year old. Price reasonable. P. W. Douglass, 1-2 mile below Currinsville store. o19

REGISTERED Shropshire ram, \$16. Enquire Joe Weiderholt, Phone 34-4, Estacada. o26

For Sale—Cheap; Team, weight about 1450 each. A. H. Miller, Phone Estacada 34-131. o19

### For Sale—Poultry

FOR SALE—18 fine spring geese.—Mrs. Thos. Kubitz, Boring, Ore. Phone 236. o26

### For Sale—Real Estate

FOR SALE—Linn's Inn, restaurant and confectionery, and 18 furnished rooms; also 5 room modern house and nine lots in Terrace addition. Reasonable, and terms to right party. Apply W. E. Linn, Estacada. 1-tf

FOR SALE—50 acre farm, 40 acres cleared, Stafford district. Joseph Vana, 1291 E. 19th St. Portland.

FOR SALE—Over eight million feet first growth timber with land. Price right. Duke & Proctor, Sandy, Oregon. s7tf

FOR SALE—120 acres, 6 acres cleared, fair barn, running water. Lays well; in good berry section. Price \$20 per acre, half down, balance on terms. Duke & Proctor, Sandy, Oregon. s7tf

### Employment Wanted

COMPETENT NURSE for all occasions. Will go anywhere. Mrs. A. W. Schunke, Garfield dist., Route 1, Estacada. a2

PLAIN SEWING and dress making neatly and quickly done at reasonable prices. Children's sewing a specialty. Mrs. Wiley Howell, Springwater. a24tf

WANTED—Carpenter and cement work. Chimneys built. Estimates furnished; work guaranteed. C. A. Chaney, R. 1, Estacada. Phone 6x51. o12

### Lost and Found

LOST—Sunday afternoon, purse, between Firwood and Birch Roberts home at Sandy. Phone Sandy 21x1. 1t

### Miscellaneous

To My Friends and Fellow Citizens—Having been twice elected constable of Estacada district, No. 14, and having resigned said office, I wish to thank my friends and fellow citizens and assure them of my appreciation of their support for said office. D. M. Marshall. 1t

## CHURCHES

### LUTHERAN SERVICES

English service at the Sandy Lutheran church the first and third Sundays at 10:30 a. m.; German services the second and fourth Sundays. Rev. F. T. Schoen, pastor.

### Estacada Christian Church

Sunday will be observed as home coming day by the Bible school. Come and be one of the hundred. Bible school at 10 a. m. A cordial invitation and a hearty welcome for all who have no other church home.

Communion and preaching service at 11 a. m. The subject of the morning message will be "The Size of Small Things."

Christian Endeavor at 7 p. m. Miss Anna Leeman, president; Miss Bessie C. Anderson, leader. The topic for discussion will be "The Christian's Duty as a Voter."—Hugh Foster, pastor.

### Presbyterian Churches

Springwater—Sunday school at 10 a. m., Mr. Shearer, superintendent. The sacrament of the Lord's supper will be observed during the morning service at 11. An offering will be taken for the relief of the hurricane sufferers in Porto Rico, and to help rebuild churches and hospitals that have been destroyed or badly damaged.

George—Sunday school at 2 p. m., Miss Lins, superintendent. Communion service at 3. The offering will go to the relief work in Porto Rico.

Eagle Creek—Sunday school at 10:30 a. m., Mr. Spilde, superintendent. A harvest home service is being planned for the evening at 8 o'clock. The program will consist of special music, readings by Mr. Test, and a message from the World's Sunday school convention by Miss Elva Shibley of Springwater. Everybody

## ESTACADA HIGH SCHOOL NEWS NOTES

Estacada high school now has 123 enrolled. On the first day of school only 93 registered but new students are coming in almost every day.

In the second football contest for this year the boys were defeated at Newberg Friday by a score of 18 to 0. Quite a number of the members of the Pep club attended the game.

A student body meeting was held September 26 for the purpose of electing an athletic manager. The lettermen's club had nominate! Bob Hayden and Herbert Fifer. Herbert was elected manager and Bob assistant. Howard Fifer has been elected yell leader.

The school library opened Monday and is in charge of Miss Jackson, who has appointed the following to act as librarians for each period of the day: Bessie Huxley, Edith Howell, Evelyn Meyers, Dorothy Dew, Ruby Webber, Lucille Saunders, Pauline Buell, Claire Gadsden. Lucille Saunders is head librarian.

Anna Leeman qualified for a welcome.—T. I. Kirkwood, minister.

Estacada Methodist Church Services in the Methodist church at Estacada next Sunday will be as usual. Sunday school at 10 a. m., preaching at 11, Epworth league at 6:30 and preaching service at 7:30 in the evening.

A double reception will be held at the church Friday evening, October 12, to welcome Rev. and Mrs. C. T. Cook, who have been returned to this charge for another year, and Rev. and Mrs. J. F. Dunlop, who will make their home here. Everybody is cordially invited.

bronze pin by writing 40 words per minute in the official speed test for September.

The commercial department is to have four new typewriters. There are fifty students registered in typing and the department had but 13 machines, which made it impossible for everyone to have two periods of typing a day.

Two glee clubs have been organized in the school, there being 20 girls and 14 boys. More are urged to join, however, as these clubs expect to have an interesting program outlined for the year. An operetta will be given as one of the attractions and a trip to Forest Grove to enter the state music contest is another part of the program. Glee clubs from all over the state will compete at this time. Miss Wilder is in charge of the clubs.

Mr. Ellissen, manual training teacher, is having his boys make tables for the typing department. When the new machines and the new tables are in use, Estacada high will have a typing department hard to equal in a school of this size.

The football schedule for the season is as follows: Estacada at Sandy September 28; Estacada at Newburg, Oct. 5; Estacada at Hill Military academy, Oct. 13; Milwaukie at Estacada, Oct. 19; Estacada at Parkrose, Oct. 26; Molalla at Estacada, Nov. 2; Estacada at Canby, Nov. 9; St. Mary's at Estacada, Nov. 16; open date, Nov. 23; Gresham at Estacada, Nov. 29.

The following former students have visited the school recently: Sam Whitehead, Kathleen Beck, Helen Perry, Avis Palmateer, Lola Moore, Ruth Ayers, Elwin Beck, Edna Bates, Lillian Duncan, Foster Meyers, Harold Sarver, Viola Henriksen, Harold Bronson, Mrs. York, (Alberta Cromer) Mrs. Brown (Ruth Day).

## Sportsmen's Headquarters

THE WINCHESTER STORE

### Bird Season Opens October 15th

Remember we handle all sizes of Shells to fit your gun. Better get your shells now while our stock is complete.

## S. & S. HARDWARE

Estacada, Oregon

### FOLLOW THE CROWDS TO THE

## Eagle Creek Hall

Saturday evening, October 13, for the regular

# DANCE

Given by Carl Douglass Post 74, American Legion

### Everything for Your Hallowe'en Party

PUMPKINS, CATS, HATS, MASKS, FAVORS, NOISE MAKERS NAPKINS, DECORATIONS PARTY MAGAZINES, ETC., ETC.

## Estacada Pharmacy

## Here Are a Few Real Buys in Used Cars

1924 Buick Sedan	\$425.00
1926 Buick Master Sedan	875.00
1927 Buick 4-passenger Coupe	950.00
1926 Buick 4-passenger Coupe	800.00
1925 Buick Roadster	375.00
Studebaker Light Six Touring	250.00
Studebaker Light Six Touring	185.00
1923 Ford Touring, new tires and battery	\$35.00
1920 Buick Touring	\$50.00
1926 Nash Special Coupe	\$700.00
1926 Nash Special Roadster	550.00

WE UNLOADED TWO CARS OF NEW BUICKS TUESDAY

# Walter W. Metzger

SALES and SERVICE  
Gresham, Oregon

Phone Gresham 1801

Oregon City 483

## A Contrast in Principles and Parties

### REPUBLICAN

For the protection of labor, industry, agriculture and citizenship the Republican party started the protective tariff. The Paine-Aldrich bill was wiped out by democratic leadership in 1913 and the Fordney-McCumber bill which went into effect in 1922, closed America's doors to the free entry of European manufactured goods, produced by cheap labor, and the livestock and agricultural products of South America, New Zealand and Australia. Under these a duty of 42 cents a bushel was placed on wheat; 15 cents a bushel on corn; 1 1-2 to 2 cents a pound on cattle; 50 cents per hundred pounds on potatoes; \$2 a head on sheep and 31 cents per pound on scoured wool.

The tariff is the safe-guard of American industry, agriculture and commerce. If changes are to be made in existing tariff laws they can be entrusted to friends in the tariff party—the Republican party. Protection against foreign competition means prosperity. If you would have a continuation in prosperity

### DEMOCRATIC

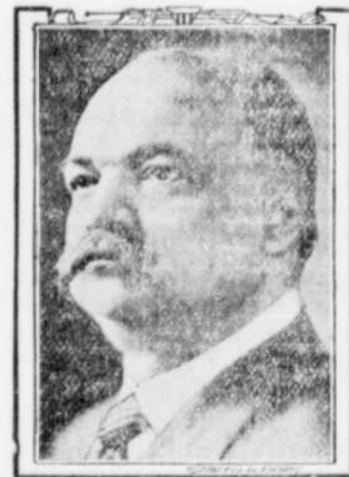
The Democratic party has always opposed a high protective tariff. It stands for "tariff for revenue only" or a "competitive tariff." When the Underwood law went into effect there followed in its wake a near panic that was only averted by the World War in Europe. Wheat, corn, cattle, sheep, wool, potatoes and other products were placed on the free list. The farmer suffered from foreign competition, and scores of factories closed down and brought on unemployment and bread lines. Revenue for government expense became so low that the Stamp Act of Oct. 22, 1914, went into effect and a tax was required on all notes, deeds and mortgages and perfumes and other sundries.

### VOTE FOR



HERBERT HOOVER

Herbert Hoover  
for  
President



CHARLES CURTIS

Charles Curtis  
for  
Vice President

Support a Republican President by re-electing Congressman W. C. Hawley.

Paid. Adv. by Republican State Central Com., 207 Imperial Hotel, Portland Phil Metschan, Chairman, Floyd J. Cook, Secretary.