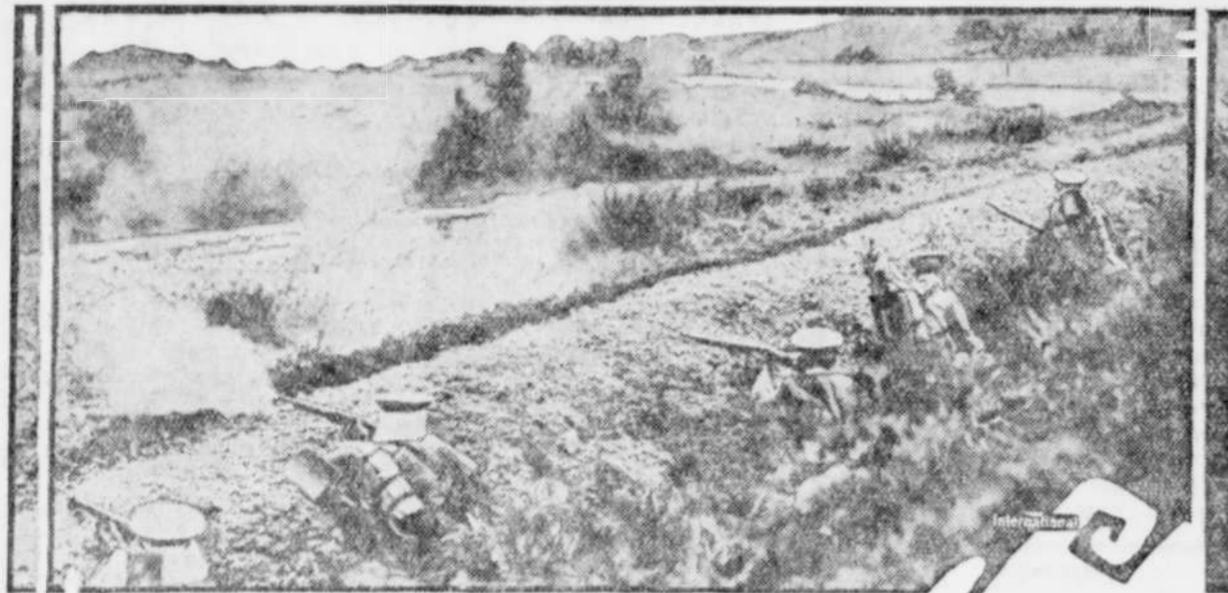
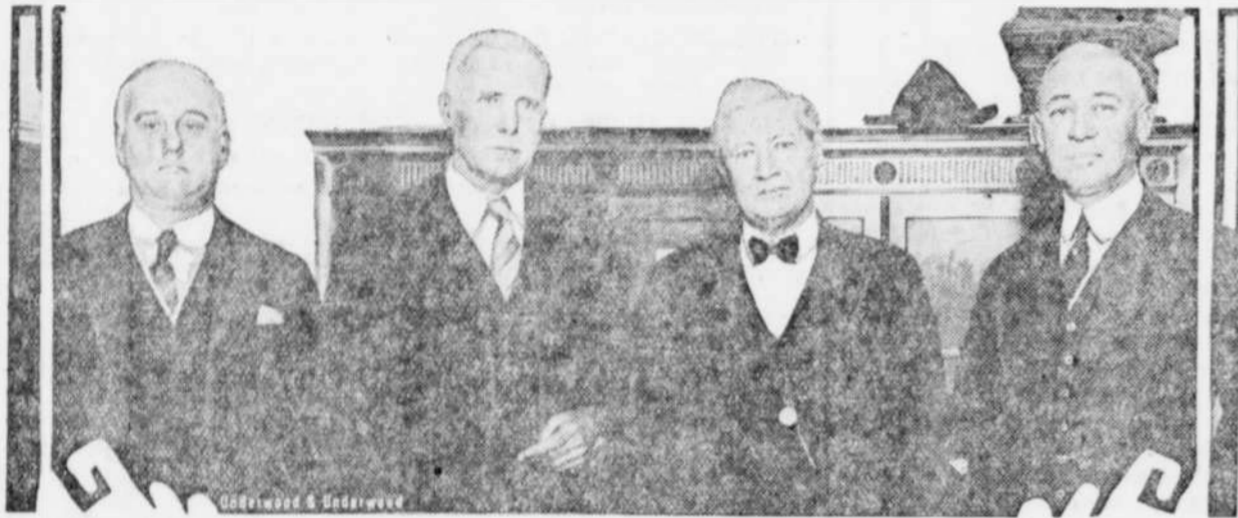


Mexican Federal Troops Attacking Leon



Mexican federal soldiers firing from a trench along the high road to Leon, which they later captured from the Catholic rebels. Across the field from this picture were the outskirts of some of the rebel military forces.

Big Four in the Vare Election Contest



When the senate took up the election contest William B. Wilson, former member of Woodrow Wilson's cabinet, made against Senator-elect William S. Vare of Pennsylvania, these four men played the leading roles. Left to right: Senator-elect William S. Vare; Senator James A. Reed of Missouri, chairman of the investigating committee; William B. Wilson, and Mayor W. Freezard Kendrick of Philadelphia.

Oldest Soldier Takes Fourth Wife



Sergt. John Van Duzen, seventy-four years old, was married for the fourth time the other day in Cincinnati. He is the oldest American soldier in active service, having been enlisted for life by General Pershing. He is shown above with his bride and wearing his wedding costume, which is that of chief snake of the Military Order of the Serpent, which he helped organize after the campaign in the Philippines.

Another Royal Match Reported



The engagement of Prince Almon of Savoy, son of the duke of Aosta, and Princess Irene of Greece, stater of Crown Princess Helen of Rumania, is reported.

GETS AIR TROPHY



Shirley J. Short, ace of the air mail pilots of the Post Office department, has been awarded the Harmon trophy for 1926 by the American section of the International League of Aviators. Short flew 2,169 hours without serious mishap, night and day, and always on schedule.

WOULD FIGHT DUEL



Dushan Sekulitch, chief clerk of the legation of the Serbs, Croats and Slovenes in Washington, who offered "satisfaction" to M. O. Eldridge, traffic director of Washington, either with pistols or fists. Eldridge and Sekulitch had a dispute over parking space.

Knew Her Stuff

Professor Mathers was speaking at San Francisco. His topic was business training. "The difficulty in getting good help lies not so much with the help itself as with the employer," he insisted. "As a rule, efficiency in any kind of endeavor is gauged by the expectations of the employer. "Too many employers are like Jones. "How is your new secretary?" a friend asked of Jones. "Great," answered Jones. "Already she has things so tangled up in the office that I can't get along without her."

Know Your Sweetheart by His Handwriting

By EDNA PURDY WALSH

Editor, Character Reading Magazine.

(Copyright.)

How About His Ardor?

The ardent lover is one who feels that he is worthy to express his affection, and there is a certain nobility in this. It has been said "if you think

what matters
Ardor and Constructive Talent.

you are a worm, you are a worm." The lover who makes little weak t bars low down over his t suffers with an inferiority complex, and hesitates to express himself. He will cross them often over to the left, and he usually gets "left" also, from procrastination.

There is nothing of virtue in self condemnation. It means to the character analyst, "I want you to praise me, and that is why I slam myself."

One finds ardor and enthusiasm in t bars which are crossed high, and more often to the right than the left. They are long bars—not clipped short. If a girl is so lucky as to receive a letter with high crossed t bars, connected with the word following as a beginning stroke, she may know she has an enthusiastic sweetheart, as well as one with good constructive and planning ability.

Terminals which curve upward as though reaching out for better things betray ardor, as well as large loops to letters like h, b, etc.

The Sociable Sweetheart

There are many who seem sociable in their home and friendship circles, but in general they may be retiring, and even diffident in the outside

world.
The slanting writer is

Sociable.
ambition is usually more sociable a way from home than the

vertical or backhand writer.

If the slanting writer has a long hook to the beginning of the capital M or N, if the terminals of the writing are present, and not cut short, at the ends of words, if the o's and a's are open or lightly closed at the top, with fairly generous spacings between words and fairly generous margin, you may be sure the individual is sociable and expressive in the outside world, especially if the writing is reasonably large.

There will be few terminals or word endings which curl back to the left in the truly sociable person, for these take time, and mean a turning back to self. The writing of the sociable man or woman will either be straight or ascending—seldom descending.

The Industrious Sweetheart

The truly industrious man does not believe in wasting much time. We do not expect, therefore, to see very large margins and much space wasted around words and between letters, yet the writing may not be cramped at all, to denote stinginess.

find it

Looped f's and t's, Energy.

Architectural
T Bars Increasing in Size, Lasting Energy.

The writing of the very industrious man may not be excessively angular, but may be termed semi-angular, since very oval and rounded lines predominating would mean a more easy-going nature.

There is no uncertain wavering in the writing of the energetic man. He often makes triangular loops on such letters as y. Letters such as f and t will also be looped back in crossing. The really industrious man keeps up his industry, day after day. He does not work in fits and starts. Consequently his letters are as large at the end of the word as at the beginning, as a rule, and the words in the last of his letter will be made as firmly as those in the first. His energy does not give out before he finishes.

Many energetic, businesslike people cut the letters like y and g off sharply below the line, showing their desire to eliminate unnecessary details, and fussing.

Note—Do not make final judgment until other signs in writing are studied.

Harmless Viper

Contrary to superstition regarding this reptile, the spreading viper is harmless. It is not poisonous and the teeth are too short to inflict a wound in case the snake did strike at a person. One of the peculiar habits of this snake is that of feigning death, which it accomplishes by rolling over on its back. When turned over it immediately resumes this absurd position.

Wouldn't Be So Much

After all it wouldn't be much of a heaven if people who don't agree with you got there.—Omaha World-Herald.

SIMPLE SATIN HAT NOW IN FAVOR; COLOR-TRIM IDEA WINS APPROVAL

NO LONGER is millinery reckoned by seasons. Modern woman scorns the calendar when it comes to buying a new hat. "When the spirit moves," and it moves very often in this day and age, she betakes herself to the milliner of her choice, and asks to see the latest arrivals in head-gear. It's at this time of year when winter hints of leaving and spring promises to come, that the "urge" to discard the old for the new becomes insistent. Certain it is that millinery displays are never more enticing than during midseason.

There's a vast range of ideas to choose from for one's "first hat"—the

ing the same fabric in several colors. Not only for children but for grown-ups as well, a styling wherein color complements color is being linked up with thoughts of coats and dresses for spring.

The charming little coat in this picture, which, if you please, bears a Paris label, carries out the new color-trim idea most attractively. For this model, rose-colored wool velours is inset into a foundation of red wool velours. In coats of twill or flannel, the tendency is to exploit fabric effects in an ornamental way. For instance, a coat of navy charmeuse has a long tuxedo collar and cuffs of lighter



Hats for Immediate Wear

sort which breathes of spring yet is not untimely even if snow still whitens the landscape. We are hearing much of felt with straw ornamentation, also belting ribbon with straw combinations. These and other similar types are in most excellent fashion for mid-season. Another mode of interest to the woman of fashion who seeks smart simplicity in her between-seasons chapeau, is the close-fitting satin hat.

Of stunning style are the satin models in this picture. Clever lines give to these hats "a dash and a go" which no amount of "fuss and furbelows" could accomplish.

No, that is not a feather trim on the satin shape at the top of the group. It is a plume-like effect of black monkey fur.

Close-fitting hats which come down over the ears like an aviator's cap are the newest of the new. The effectiveness of this type is bespoken in the

blue self-fabric, scalloped along the edges.

Many and novel are the developments along the line of thought of fabric effects for trimming. One cunning spring coat is bordered all around, also colored and cuffed with a banding composed of three strips of the broadcloth, each of a different color. There is a clever pocket also in this tri-color compose.

Sometimes fabric incrustations are applied in the form of scalloped side panels with a deep scalloped yoke to match. A pretty navy coat interprets color contrast in that it is slashed here and there so as to reveal a lining of bright red.

When facings, bandings and insets are not of a contrasted or blended solid coloring then they are apt to be of bright plaid, for gay plaiddings are foreseen as very popular for spring juvenile cloaking. Plaid taffeta used



Juvenile Coat From Paris.

little satin cap to the left in the picture.

Stitching done in silver thread, adds a charming touch to the satin toque to the right in the picture at the top of the column.

Forecast for spring is the return of the African drape, and here you see it in the embroidered satin model below to the left.

Stitching, this time in multi-color and describing deep points, distinguishes the last little hat in this group which also is of satin.

What's new in children's coats? The very latest is two and three-tone effects achieved by inter-work-

as trimming is one of the popular themes for spring. A coat of suede-like cloth with collar, cuffs and pocket taffeta-lined is charming for the little tot.

In harmony with color exploitation are smart ombre novelty woolen materials. These are often made in straightline with narrow belts of leather and there is apt to be a collar and pocket of calfskin. Quite a sophisticated styling, to be sure, for youth but then that is as it should be for stylists declare the general tendency in coats is to duplicate grown-up fashions.

JULIA BOTTOMLEY.

(© 1927, Western Newsweek Union.)