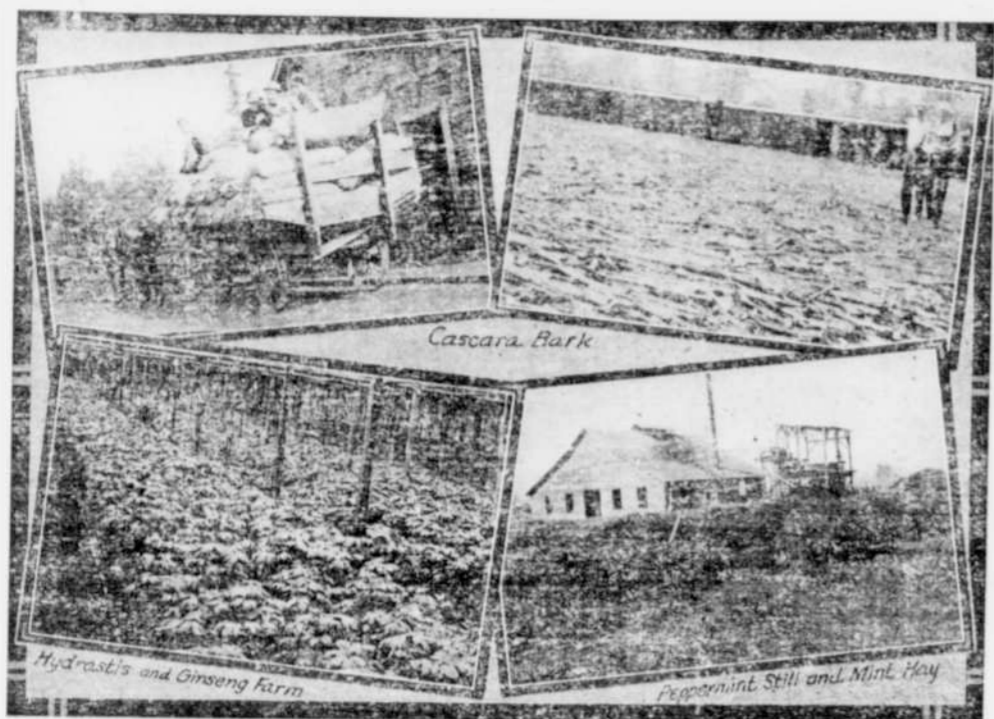
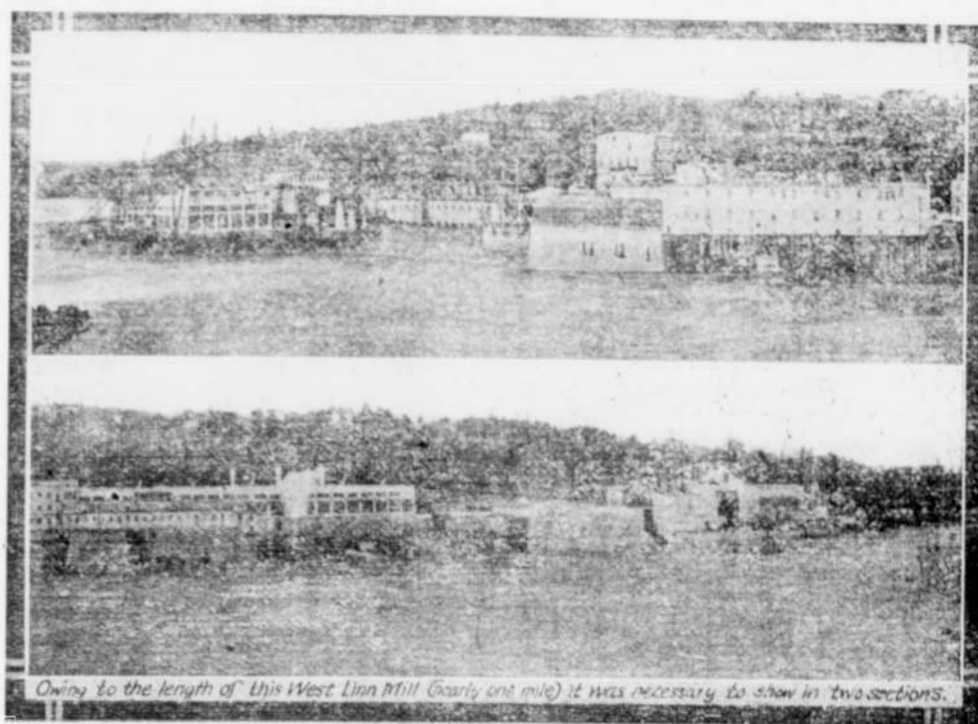


Eastern Clackamas County Has Wonderful Possibilities



DRUGS AND MEDICINE

Steady incomes are being made and even small fortunes are accumulated by men who follow the business of raising or gathering medicinal herbs. Visitors to the Eastern Clackamas section are sure to ask what the sheds, which may be seen on every hand, are for. These are the shelters set up over valuable beds of ginseng. This crop finds its market in China, chiefly, and is a very profitable one although it requires great care and is a long time in maturing. Golden seal, Oregon grape root, mint, and cascara are other medicinal products grown or gathered. The market for balsam of fir is also presenting some possibilities in this section. The market for these products is right at our door since the large wholesale houses of Portland are exporting many tons to the countries of the Orient.



WATER POWER

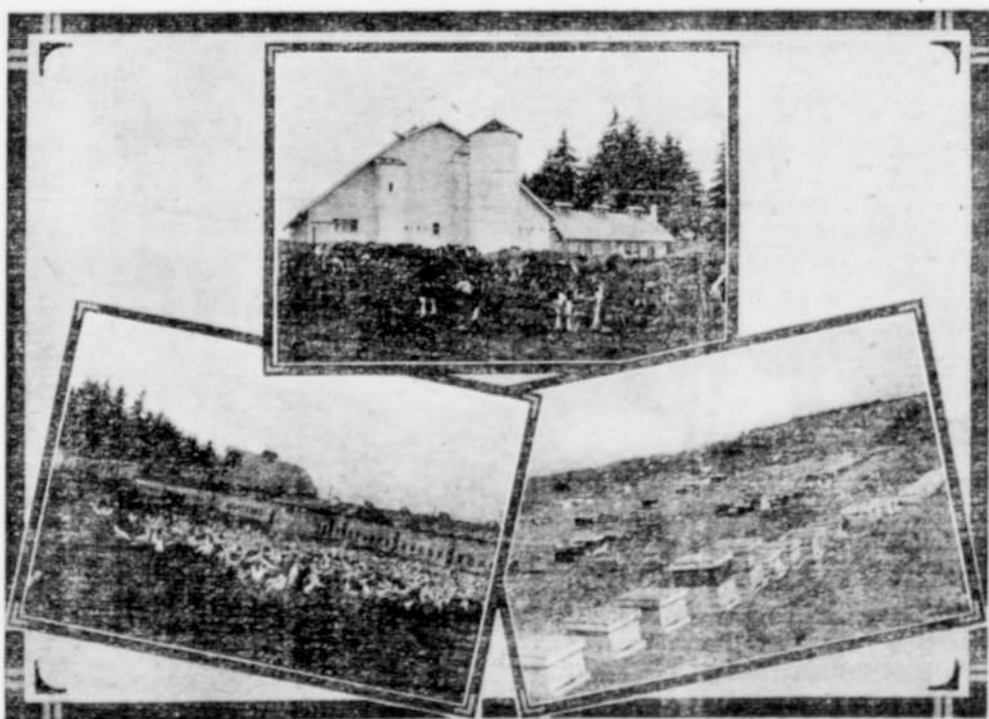
When the easterner talks of Muscle Shoals, he thinks it is the last word in gigantic electrical power development and yet Oregon has two projects which are even larger, one of them being in Eastern Clackamas County. Cheap power alone will not make industrial development, but combined with easy living conditions, raw materials and transportation outlet to the sea there is no limit to the possibilities here. As an example of what may be done the West Linn paper mill is shown. This mill is producing 325 tons of paper per day. Wrapping paper, fruit wrappers, toweling, tissue, kraft, manilla and other papers are being made in the northwest from hemlock and spruce pulp.

Industries such as these do not, as a rule seek locations in congested districts since their production costs would be higher there. Estacada would be an ideal location for canneries, woolen mills, sash and door factories, furniture and novelty plants, potteries, leather manufacturing plants, or milk condenseries.



LUMBER—OUR CHIEF PRODUCT

The timber in Eastern Clackamas county is practically untouched. Small mills have been and are now cutting in easily accessible places, but the great stand of fir in the national forest has not been called upon to contribute to our prosperity. The time has come, however, when we are to reap this crop which has been several hundred years in the growing. The La Dee logging company is beginning operations up the Clackamas under a large government sale. There are others in prospect. The day is not far off when a large lumber mill employing hundreds of men will occupy a site near Estacada. Timber areas have been cut over until today Oregon has one-fourth of the standing timber in the United States. The yearly output of Oregon mills is over 4,000,000,000 feet. Thirty per cent of this is shipped to foreign countries. The demand will increase as other timbered sections are cut over and Oregon's mills will be added to to supply the demand. Developments along the Columbia river, at Bend, Klamath Falls, Longbell, Vernonia and on the harbor fronts of the west coast of Oregon and Washington indicate the large demand there is for our timber crop.

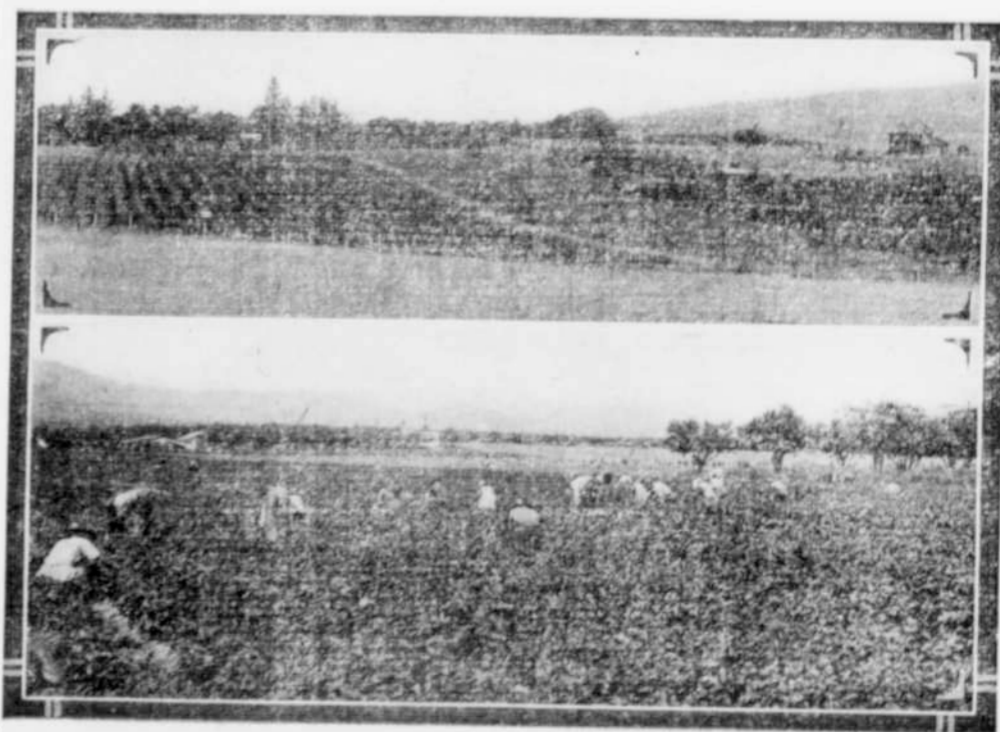


POULTRY AND DAIRY PRODUCTS

Many fine herds are to be found in the eastern part of Clackamas county. Guernsey and Jersey cattle seem to predominate although there are some fine registered Holsteins in this section. Due to the open winters, which obviate the necessity for much winter feeding, this region is ideal for dairying. The surplus milk is sold to condenseries or cheese factories, or the separated cream is converted into butter which has a large demand in California and eastern markets.

Poultry and eggs are produced in large quantities. Mild winters and the abundance of green feed throughout the year add greatly to the production of poultry in this section. Pure bred strains are almost entirely used and the per hen output of eggs is exceptionally large. The large white egg produced here commands a better price in the eastern markets. Shipments of fresh eggs have been made this year in large quantities to European markets.

The production of honey is another industry which is showing rapid development here. Fruit blossoms and wild flowers furnish abundant material for the bees to work on. The bees also aid in pollinating the fruit blossoms and many growers, having gone in for bees on this account alone, have found a nice profit on the side.



SMALL FRUITS

Clackamas county is famous for her small fruits, the eastern section being particularly well adapted to their production. Loganberries are one of the fruits being produced to perfection in this region. Until recently the loganberry was not grown commercially, but the flavor and general excellence make the future of this crop assured. They are exported in the form of juice or canned goods, and the pack for Oregon amounts to over a quarter million cases yearly. In the present year up to December 1st, the value of the exports of this one fruit from Portland amounted to \$934,152. There is a steadily increasing demand which will have to be supplied from the Pacific northwest since from our exceptionally favorable weather and soil conditions, we are now furnishing nine-tenths of the world's supply.

Blackberries, raspberries, strawberries, cherries and prunes are staple crops here and are packed in large quantities. Of prunes, Oregon produces a quarter of the nation's crop and in no section of the state does this luscious fruit produce better than in Eastern Clackamas county. Apples and pears are also grown here with excellent results, but not as yet on such a large commercial scale.