

Eastern Clackamas News

Entered at the postoffice in Estacada, Oregon, as second-class mail.

Published every Thursday at Estacada, Oregon

UPTON H. GIBBS
Editor and Manager.

SUBSCRIPTION RATES

One year \$1.50
Six months .75

Thursday, October 19, 1922.

BEGIN AT HOME

While talking to a gentleman last Sunday on tax reduction, he remarked that the way to do it was to begin at home. In other words there won't be any material reduction in taxes until the scale of individual living becomes more economical. A large portion of taxes were created to improve living conditions, such as schools, roads and other improvements. All very good and desirable, but the trouble is that their cost got ahead of the financial schedule of the tax payer. Public life is a reflection of private life. The individual American has become prone to an extravagant mode of living. He wants an automobile and will not wait till he has the money in hand, but goes in debt for it, and often beyond his means. And what he does as an individual he will do as a legislator. When there is a reform in the individual expenditures it will be reflected in public expenditures, and not before.

WELL MERITED SUCCESS

On Saturday, October 14th, The Portland Telegram moved its entire plant and offices from the quarters in the Pittock Block which it had occupied for eight years, to the new Telegram Building at the corner of Eleventh and Washington streets. The Telegram's business and circulation have been growing and expanding rapidly so that, while quarters in an office building formerly sufficed, a whole building is now necessary.

The new structure is three stories high, especially designed and built to house The Telegram editorial, advertising, circulation and mechanical departments, and The Telegram staff expects to be comfortable and happy in its new home. The architecture is Colonial, in style and the tower is almost a replica of Independence Hall, Philadelphia.

The Telegram was founded April 16th, 1877, by the Oregonian Publishing Company, by which it was conducted until July 24th, 1914, when it was sold to J. E. Wheeler and L. R. Wheeler. The latter assumed actual control of The Telegram the day the World War began, July 28th 1914. Since that time it has doubled in circulation.

The News extends the heartiest congratulations to its esteemed contemporary on this substantial evidence of its success. A comparison of the three leading dailies shows that each caters to a particular field and do not overlap. The Telegram most ably is meeting the needs of its own sphere as an evening paper, hence its steady growth and development. Its editorials are clear and of a high order, and while there may be a legitimate difference of opinion with those on political and economical questions, yet all right minded men will find themselves in agreement when it comes to moral issues.

CALL'S REMARKABLE GROWTH.

Since March the circulation of the Call has increased five times. Today it has a greater circulation than any other weekly publication in Oregon outside of agricultural and trade publications. From nearly every county in western Oregon willing workers are extending the paper's circulation. Bundles of letters come in

IT'S TOASTED
one extra process
which gives a
delicious flavor



LUCKY STRIKE
CIGARETTE

weekly commending the paper for its fight for a square deal in taxation and its defiance of the big corporations that too many of the state's newspapers cringe before.

The future looks bright for the Call to fill a demand for a state paper FOR THE PEOPLE.

The above paper is the Producers Call which started the beginning of the year at Oregon City and later removed to Portland. In the former city it did not find a congenial environment, hence its change of location. It carries now a good proportion of advertising matter in its columns, which is indicative of a good circulation.

Thirty years ago we would have been more in agreement with it than we are now. To our esteemed contemporary this will seem an evidence of senility, but we attribute it to the fact that experience has taught us that it is most difficult to diagnose political and economical ills and that so many of the prescribed remedies bring about a worse condition than the original disease. We trust more to the recuperative qualities of the political or economical social body, than to the nostrums prescribed by those whose diagnosis is faulty because not comprehensive enough.

Walter M. Pierce is not going to have it all his own way in the campaign. Governor Olcott has now gone into action and is firing a steady stream of sharpnel in Pierce's direction. In the words of the immortal bard: "Lay on, Macduff; And damn'd be him that first cries, Hold, enough."

The political candidate who has a knowledge of the Bible, is reminded forcibly of that verse which reads: "There is nothing covered that shall not be revealed; neither hid that shall not be made known."

In northern Minnesota and other parts of the middle west they have had their first snow of the season. While we are more fortunate yet it should remind us that winter is coming even in this part of Oregon, and begin to prepare for it. Those who have lived in the middle west will recall how trying the first cold snap was, as it caught them without heating stoves or storm windows up, and the only place to get warm was around the kitchen stove.

Dorcas Society to Meet

The Garfield Ladies Dorcas Society will meet at the home of Mrs. W. S. Davidson, Thursday, October 26.
Mrs. Ida Palmateer, Sec.

Demand for Closed Cars Increases.

Impressive evidence of the remarkable shifting of public demand for closed cars is shown by the recent announcement of the Fisher Body Company that have arranged to build or take over six large plants near Chevrolet assembly plants for the sole purpose of supplying closed cars to the Chevrolet Motor Co.

Addition of these new plants will give the Fisher Body Company the largest total manufacturing floor space in the world—the aggregate being over twenty million square feet, nearly three times the area of the United States Steel Corporation.

According to Colin Campbell, general sales manager of the Chevrolet Motor Company, Chevrolet is the lowest priced car on the market carrying a Fisher body, hence it has attracted buyers both from the lower and higher price classes because of the high quality of the body and the engineering improvements in chassis. Chevrolet is now the largest producer of closed cars of this quality.

In one year Chevrolet Motor Company closed car requirements have increased from approximately 9% of its volume to nearly 50% and indications are that in 1923 more than half of its production will be closed cars.

The new Fisher Body Company plants are located at Flint, Michigan, Cincinnati Ohio, Buffalo, N. Y., St. Louis, Missouri, Janesville, Wis. and Oakland, California. The plants will be immediately adjacent to the Chevrolet assembly plants and bodies will be carried on endless conveyors direct to the assembly plant, avoiding the expense and delay of freight shipment hitherto experienced because of distance of the body plant from the assembly plant. It is stated that this saving will be reflected in still finer appointments of the car.

Labor for Exposition

Because general state development and prosperity mean continued employment of all men in all lines of industry and help maintain good working conditions, organized labor has joined the forces in behalf of the Oregon 1927 exposition. Under the direction of Otto Hartwig, president of the Oregon State Federation of Labor, a large committee has been formed and has launched an active campaign in behalf of the state measure legalizing the taxation of Portland for the exposition.

"Organized labor is not interested particularly in the employment the actual building of the exposition would provide," says Mr. Hartwig, "but it is interested in the up building of the state. The development of irrigation projects in Eastern Oregon, the development of hydro electric power throughout the state, the development of farming, the increasing of our population with the consequent building that goes with such development; the building of roads and the establishment of industries, are the things we are interested in. Oregon is far behind in the development of its resources and must make some big move to catch up with progress."

SHINGLES

Cement
Lime
Brick
Drain Tile

ALWAYS ON HAND
At Prices that are right

P. E. TRANSPORTATION Co.



Going to Paint?

Whether it's the outside or the inside of your house that needs paint, we recommend

DUTCH BOY WHITE-LEAD

With pure linseed oil, it makes a good-looking, durable exterior paint; with Dutch Boy flattening oil, it makes a handsome, glossless, washable interior paint.

Let us figure on your painting—we can save you money. Our paint materials are reliable, and we guarantee a satisfactory job.

GEORGE POINTER
Painter and Decorator
Estacada, Oregon.

See the Champions

Pacific International Live Stock Exposition

PORTLAND, NOV. 4-11

\$75,000 in Premiums—Beef and Dairy Breeds—Horses, Swine, Sheep and Goats
Western Winter Poultry and Rabbit Show,
Western Dairy Products Show—Manufacturers and Lard Products Show—
Night Horse Show.

Largest exposition of its kind in America—
—10 acres under one roof!

REMEMBER THE DATE
PORTLAND, OREGON. NOV. 4-11

REDUCED FARES ON ALL RAILROADS

VALUE OF CREDIT

Credit is a very real asset to any one. A checking account at a Bank is the first step towards establishing credit, not only with the Bank, but in the community at large.

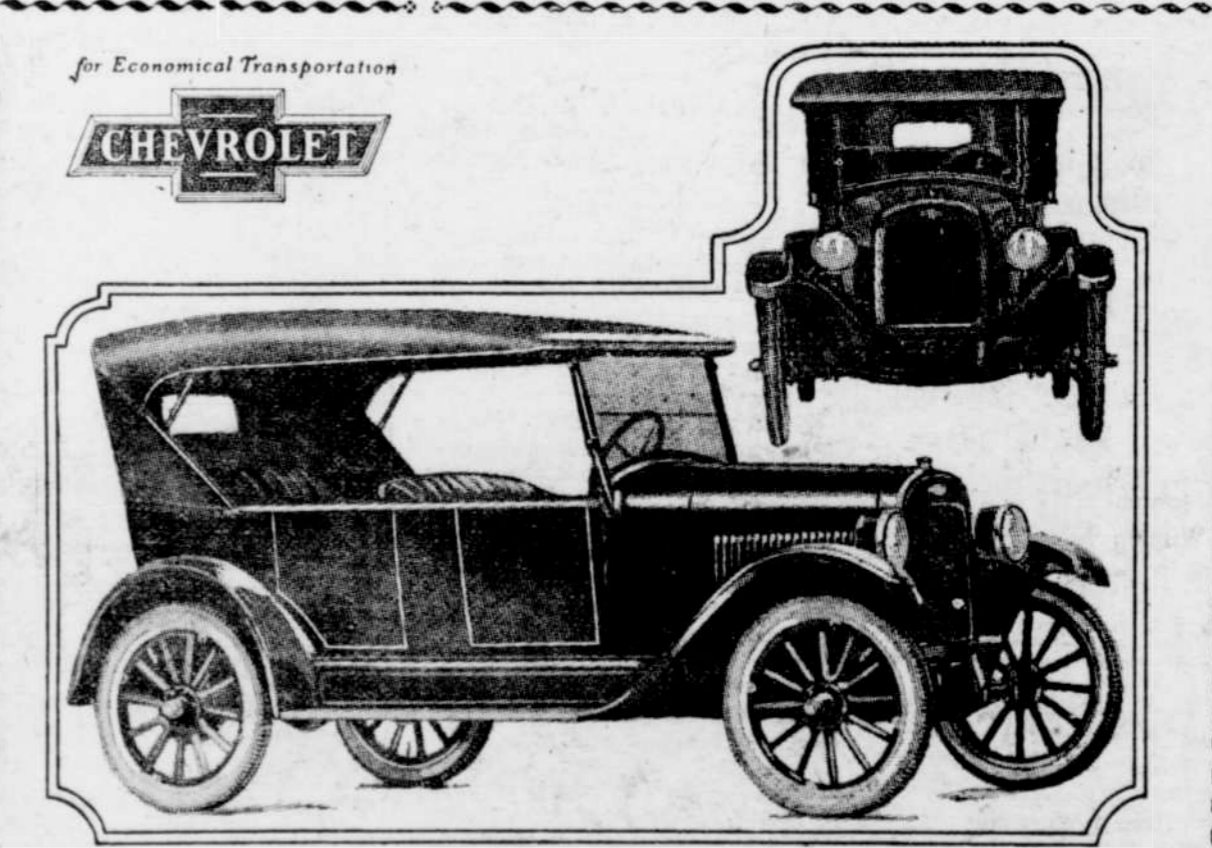
The right credit at your bank is worth more than any amount of recommendations presented by you as a stranger

In addition to the checking accounts we have both Time and Savings accounts on which interest is paid.

YOUR ACCOUNT IS INVITED

ESTACADA STATE BANK

"Safety and Service."



The new 1923 Superior Chevrolet Line

is a decided advance over its predecessor both in style and engineering, yet prices remain the same. This has been made possible by the economies due to Chevrolet's greatly increased production schedules.

The Gasoline Tank has been removed from under the front seat to the rear of the car and vacuum feed substituted for gravity feed.

The most apparent improvements in the new line are in design. All models have high hoods and stream line bodies, with drum type headlamps and crown-paneled fenders.

The closed bodies by Fisher Body Corporation are handsome in design and appointments, all black outside, except for gold stripe decoration of the molding, which adds a note of distinction. Wind shield wiper and dash light have been added to the equipment.

A novel unit of the line is the Sedanette. As its name implies, it is a slightly shortened Sedan, for four passengers, equipped with a 35 inch trunk at the rear. There are two wide doors. The front seats are individual and tip forward to facilitate an entrance to rear seat. This novelty model gives Chevrolet entre to the style and sport field, and is the first car of this type to be offered in the less-than-\$1,000 class. It is priced at \$850, F. O. B. factory.

CASCADE GARAGE WILCOX BROS. Props.
ESTACADA, OREGON

THE ESTACADA MEAT CO.

BEEF CATTLE
VEAL and HOGS
BOUGHT, Dressed or Alive

Lard, 10lb pail, \$1.65
5lb " 85c

Open from 7 a. m. to 6 p. m.—Saturdays, open to 8 p. m.

H. C. GOHRING, Prop.
Estacada : : Oregon