

Ford

THE UNIVERSAL CAR

The Ford Sedan, with electric starting and lighting system, demountable rims with 3½-inch tires all around, is the ideal family car because of its general utility and refined and comfortable equipment. Finely upholstered. Plate glass windows. An open car in the spring, summer, and early fall. A closed car in inclement weather and winter. Rain-proof, dust-proof. In the city or the country, a family car. The low cost of operation and maintenance is not the least of its charms. Won't you come in and look it over?

Reed & Shibley

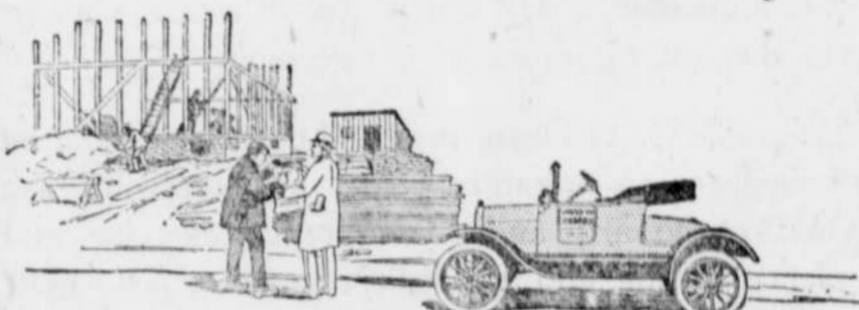


Ford

THE UNIVERSAL CAR

The Ford Runabout is a Runabout in reality—a regular business messenger, solving the question of economical and quick transportation. The Contractor, Builder, Traveling Salesman, Collector, Solicitor, all find the Ford Runabout the most convenient as well as the most economical among motor cars. Durable in service, and useful every day in the year. We solicit your order for one or more. We ask your patronage in the repair of your car, assuring you of genuine Ford Parts, skilled workmen, reasonable prices.

Reed & Shibley

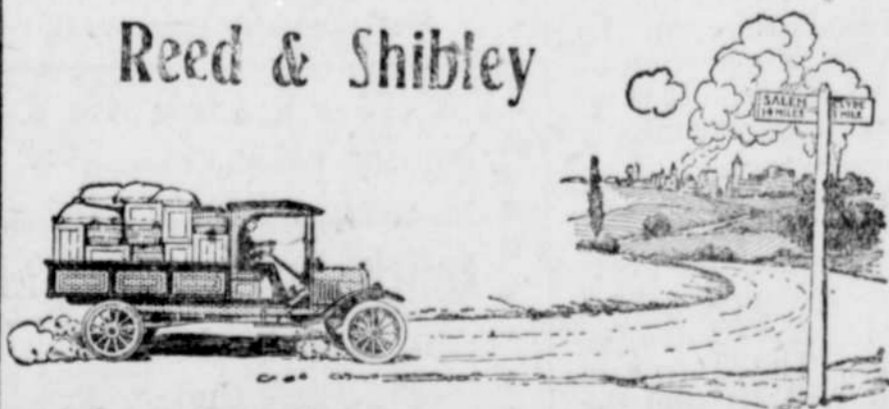


Ford

THE UNIVERSAL CAR

The Ford Model T One Ton Truck was the first low price truck to carry the worm-drive—that tremendous power delivering mechanism had previously been an exclusive feature with high priced motor trucks. In the Ford Truck, however, you get the worm-drive of manganese bronze material, absolute in strength and positive in the delivery of power, at a very low price. Come in and let us point out the many superior merits of the Ford One Ton Truck, because you need one in your work. We give prompt and efficient repair service.

Reed & Shibley



Ford

THE UNIVERSAL CAR

The Ford Coupe, with electric self starting and lighting system, has a big, broad seat deeply upholstered. Sliding plate glass windows so that the breeze can sweep right through the open car. Or in case of a storm, the Coupe becomes a closed car, snug, rain-proof and dust-proof. Has all the Ford economies in operation and maintenance. A car that lasts and serves satisfactorily as long as it lasts. Demountable rims with 3½-inch tires all around. For the doctor and travelling salesman it is the ideal car.

Reed & Shibley



REED & SHIBLEY