

## How's Your Roof?

### Repair It During The Dry Weather

Shingles — Mountain Cedar	\$2. per M.
Cascade Roofing Paper	\$1.25 per 108 sq. ft.
Elastic Roofing Paint	- 75c per gal.
No. 1 Portland Flooring	at \$25. per M.
No. 2 " " "	" 20. " "
Shiplap No. 1 common	\$12. — \$13. per M.
Boxing and Dimension	- \$11. " "

We also have a fine assortment of Window and Door Casings, Trim and Mouldings.  
**No. 2 Doors** - \$1. each  
 Lathes - - - - \$2. per M.  
 Complete stock of **Hay, Feed and Grain**  
 Fresh Supply of Sand and Gravel

**Estacada Lumber & Produce Co.**  
 E. D. Allen W. J. Sampson

# The Best

## Is the cheapest in the long run Dodge Bros Automobiles

have the best of materials, workmanship, and comfort. You start everything—the engine, lights and car—from the seat. A starter that starts, lights that light and, only a slight finger press does it. They climb any hill and go up to 60 miles. The DODGE BROS. have millions back of them and are the oldest automobile part mfgs. in the U. S. The DODGE has been tried out under all severe tests for two years before being put on the market. REMEMBER that TIMKEN BEARINGS are on the best cars made and the Dodge has them throughout.

A demonstration anytime gladly given.

## Clackamas Garage

Estacada, Oregon  
 J. R. Morrow, Prop.

### FARM STOCK.

The farmer is known by his stock. Farm animals in good trim bespeak a careful and considerate farmer, while stacks of bones tell of a shiftless and most unkind creature.

The brood sows should not be given corn unless they are very thin in flesh and need to be built up.

Clip the heavy coated horses when the hair begins to shed. Blanket them warmly, and never let them stand in the open uncovered and there will be no danger from cold.

The ewes that are to drop their lambs early should be separated from the main flock.

The young lamb should have milk from the ewe very soon after it enters the world. If the quarters are cold and the lamb is chilled it may die.

### Ration For Chicks.

After the first week the chicks may be fed four or five times a day from the following mixture: Cracked corn or kafir, twenty pounds; cracked wheat, twenty pounds; pinhead oatmeal, ten pounds; beef or meat meal, ten pounds; fine charcoal, two pounds

### Bran and Cottonseed Meal.

Cottonseed meal and bran are hard to be compared as feed for cows owing to the fact that they are so dissimilar. Cottonseed meal is very rich in protein, having 42 per cent, while bran has only 15 per cent. On the other hand, bran has nearly twice as much carbohydrate or starch in it. Many dairymen use both bran and cottonseed meal. A feed which would not be far wrong for the average cow would be composed of two pounds of bran, one pound of cottonseed meal and about eighteen pounds of timothy hay at a feeding. If clover or alfalfa hay are fed the cottonseed meal may be reduced to about half a pound.

### Mange In Horses.

Wash the horse's body with castile soapsuds to which has been added a tablespoonful of pure carbolic acid to every pint of water. The body should be given a thorough scrubbing with this soapy solution. Apply afterward a tobacco solution made by boiling tobacco in water, using about three ounces of tobacco to one quart of water. This solution should be applied over all parts of the body and repeated again in ten days. It would be well to feed a little linseed meal as a part of the grain ration.

### Protect the Farm Animals.

See that all the live stock is got up and housed when the nights are cold and stormy. It does not pay to let them get chilled in the cold storms.

### Peas as a Forage For Pigs.

During a trial in two consecutive years at the North Dakota experiment station pigs foraging off a field of peas during the months of September and October each year required in addition two pounds of barley per 100 pounds live weight of pigs per day to keep them gaining as rapidly as pigs of the same age and size being fed in a dry lot and receiving four pounds of barley per day per 100 pounds live weight of pigs. This shows that the peas made possible a saving of one-half the amount of barley usually required by pigs being fed in dry lots. The return for the peas was \$18 per acre.

### WINTER KILLING OF ALFALFA.

No Plant Yet Found Proof Against All Degrees of Temperature.

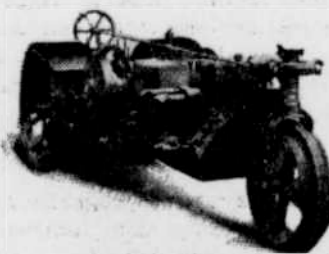
Agents of the department of agriculture have spent much time in Siberia searching for some north Asian species of alfalfa that cannot be winter killed. There has been much complaint of the winter killing of alfalfa, and it is probable that there always will be some such complaint. The agents of the department of agriculture have not found a plant that is proof against all manner of temperature changes common to northern regions.

Now and then an alfalfa field will be pretty well killed out by cold weather, and another field on the same kind of soil and just across the road will come through the winter in very good condition. When this happens, you may set it down that the winter killed field has been badly handled by the grower in the summer before.

Here are some of the reasons for the winter killing of alfalfa. Pasturing it down to the ground before winter sets in; cutting it too closely late in the season and letting it go into the winter while making a heavy growth. The heavy, green growth caused by warm fall weather and long continued fall rains is a frequent cause of winter killing.

There are some winters, too, when the snowfall is very light and the weather is very severe, and when this combination occurs alfalfa is likely to suffer greatly. Like wheat, alfalfa winters better where it can shelter under a snow blanket. Many growers stick to the practice of mowing down the last crop, letting it lie as it falls and refusing to pasture the field after this cutting.

A still better plan and one that is very popular is to not cut into the fall, but to leave a growth of from six to eight inches high. This holds the snow, helps in protecting the roots and prevents the heaving and settling of the soil that comes from alternate freezing and thawing. This freezing and heaving of the soil are among the reasons why alfalfa winter kills, as it loosens the roots and causes them to die from exposure.



**SAMSON**  
**TRACTOR**  
**\$575.**

W. R. Reid & Sons Distributors  
 Estacada, Oregon

## Remember

While Attending

# The East Clackamas County Fair

Sept. 8th, 9th and 10th, that its only fair to yourself that you do your trading where you are sure of being a

## Winner

## You Win

by trading with us, whether its Flour, Feed or Groceries you want. Our stock is complete and our prices right.

## Now

is the time to buy your winter's supply of

## Flour

while you can still get it made from the old wheat. We have two cars of old wheat flour due to arrive this week. In addition to such well known brands as DEMENT'S BEST, WHITE RIVER and BEST EVERETT, which we handle. We have just taken the agency for the Columbia Milling Company's celebrated WHITE MOUNTAIN brand. We guarantee these to be four of the best brands on the market.

Our present price on any of the four brands, Sack, \$1.60; Barrel, \$6.20.

SEE US FOR SPECIAL PRICES ON Three, Five, or Ten BARREL LOTS.

## In Groceries

we handle Allen & Lewis, PREFERRED STOCK, which means the BEST to be had in Groceries. If you buy in quantities and will let us figure with you we guarantee to save you money.

## For The Three Fair Days Only

we offer the following specials:—

Best Cane Sugar, 100 lb Sack	\$6.60
" " " 25 lb Sack	1.70
Karo Syrup 10 lb Dark, 55c; 10 lb Light,	.60
Solid pack Tomatoes, Can 10c, Dozen	1.10
Tomatoes with Puree, Can 10c, 3 for 25c doz	.95
Sliced Pineapple, large size, Can 20c, 2 for 35c, Dozen	1.85
Carnation Milk, Can 10c, 3 for 25c, Dozen	.95
Crystal or Royal White Soap, 6 Bars,	.25
A. & H. Soda, 4 packages,	.25
Rolled Oats, Albers Golden Rod or A. & L., 9th Sack,	.40
Cream of Wheat, 2 packages	.35
Olympic Wheat Hearts, 25c, 2 packages	.45
One Pound of our Celebrated T. & G. Breakfast Blend coffee free with each order for groceries amounting to \$2.50 or more.	

We want your Eggs, Poultry and Grain.

" A Satisfied Customer

is the Best Advertisement"

## TRACY & GIVENS

Estacada, - Oregon.