

THE OLDEST INHABITANT IS RIGHT UP TO DATE.



TOBACCO satisfied—a clean, small chew. It's the Real Tobacco Chew.

So satisfying and comforting that men are glad to hear about it. And then when they've found it their next impulse is to see that their friends get the good news, too.

A little chew of pure, rich, mellow tobacco—seasoned and sweetened just enough—cuts out so much of the grinding and spitting.



THE REAL TOBACCO CHEW IS NOW CUT TWO WAYS!!
W-B CUT IS LONG SHRED. RIGHT-CUT IS SHORT SHRED.

Take less than one-quarter the old size chew. It will be more satisfying than a mouthful of ordinary tobacco. Just take a nibble of it until you find the strength chew that suits you, then see how easily and evenly the real tobacco taste comes, how it satisfies, how much less you have to spit, how few chews you take to be tobacco satisfied. That's why it is *The Real Tobacco Chew*. That's why it costs less in the end.

The taste of pure, rich tobacco does not need to be covered up. An excess of licorice and sweetening makes you spit too much.

One small chew takes the place of two big chews of the old kind.

“Notice how the salt brings out the rich tobacco taste.”

WEYMAN-BRUTON COMPANY, 50 Union Square, New York City

BUY FROM DEALER OR SEND 10¢ STAMPS TO US

Dodge Automobiles

Full of Snap and Go

Comfort, Power and Speed

Timken Bearings Throughout

Noiseless, Self Starter

Electric Lights, Oil Gauge

Everything you need, and you do not have to leave the seat.

Price **\$885.**

A demonstration anytime gladly given.

Clackamas Garage

Estacada, Oregon

J. R. Morrow, Prop.

Panama Canal Tonnage

The following statement shows the shipments from Portland during the month of May, 1915, which moved via the Panama Canal, to New York, Boston and Charleston:

Commodity	Tons Domestic
General Merchandise	109
Canned Salmon	283
Flour	2,063
Wool	4
Fallow	22
Clover Seed	36
Cross Arms	19
Cascara	6
Wheat	3,050
Lath	50
Mohair	39
Box Shooks	77
Sulphate of Potash	203
Total	5,961
Lumber	868,000 ft.

Westbound the total tonnage, all from New York, was 7,811 tons, consisting principally of iron and iron articles, but including also large consignments of other commodities.

Christian Church Notice.

There will be no services at the Christian Church next Sunday as the congregation has been invited to attend the all day Community Service at the Mt Zion church. It is hoped that members of the Church and Bible School will accept this invitation.

CARING FOR LAMBS.

Youngsters Should Be Docked Early. Feeding Weaklings.

Ordinarily a young lamb requires very little attention, but there are always some that are weak or become chilled, and if they are not looked after many of them will die. Quite frequently a lamb needs to be held up to get its first meal, and after that it will be all right and able to help itself, where if it were not helped to the first meal it would have died without even nursing at all. Occasionally it is necessary to start a lamb on a bottle, and one suitable for the purpose should be kept on hand.

Lambs that come very early in the spring often get chilled before they become dry. When severely chilled the best way to warm them is to immerse them in warm water as hot as one can stand on the bare arm. After immersing wrap the lamb in dry cloths and keep covered until dry. If lambs are very weak they may best be fed the first few times from a bottle, taking care that the milk is at a temperature of about 100 degrees Fahrenheit when fed. A few drops of pure alcohol put in the milk will act as a beneficial stimulant.

All lambs should be docked when from ten days to two weeks old. For docking use a sharp knife or a pair of hot sharp pliers. Docking with the hot pliers is the most satisfactory and humane way, as the hot iron tends to seal over the wound, and there is much less bleeding than when the docking is done with a knife. The stump of the tail should be left about one inch long. Docking lambs should not be neglected, as the market invariably discriminates against lambs with long tails.—North Dakota Experiment Station

Will and Walter Douglass, of Eagle Creek, made a trip to Portland Saturday.

Novel Manufacturing Exhibit at Marvelous Exposition

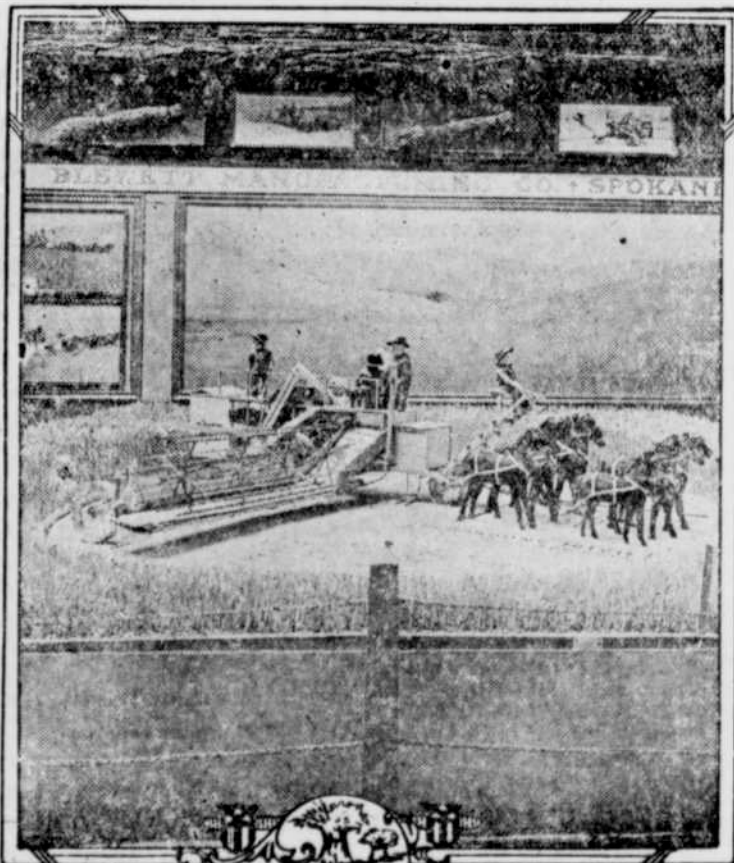


ILLUSTRATION shows one of the interesting exhibits in the Palace of Manufactures at the Panama-Pacific International Exposition, San Francisco. This typifies the realism that dominates the whole exhibit of the great Exposition. The harvester and model horses are complete in every detail. Be sure to visit San Francisco this summer.