

THE GOOD JUDGE CALMS THE COWBOY.



SOME OF THAT REAL TOBACCO CHEW OR YOUR LIFE PARTNER

WITHOUT IT LIFE WOULD NOT BE WORTH LIVING. HELP YOURSELF

CUT loose from the big, bulgy wad. For a clean, small chew there's nothing like it. It is the Real Tobacco Chew that you hear men telling their friends about.

You get the good of the richest tobacco grown.

A little chew of pure, rich, mellow tobacco—seasoned and sweetened just enough—cuts out so much of the grinding and spitting.



THE REAL TOBACCO CHEW IS NOW CUT TWO WAYS!!
W-B CUT IS LONG SHRED. RIGHT-CUT IS SHORT SHRED.

Take less than one-quarter the old size chew. It will be more satisfying than a mouthful of ordinary tobacco. Just take a nibble of it until you find the strength chew that suits you, then see how easily and evenly the real tobacco taste comes, how it satisfies, how much less you have to spit, how few chews you take to be tobacco satisfied. That's why it is the Real Tobacco Chew. That's why it costs less in the end.

The taste of pure, rich tobacco does not need to be covered up. An excess of licorice and sweetening makes you spit too much.

One small chew takes the place of two big chews of the old kind.

“Notice how the salt brings out the rich tobacco taste.”

WEYMAN-BRUTON COMPANY, 50 Union Square, New York City

BUY FROM DEALER OR SEND 10¢ STAMPS TO US

You get in a DODGE automobile

Except a difference in speed and power.

All that you get in a \$3,000 car and the price is only \$885.

Note the General Specifications and see for yourself.

UNIT POWER PLANT—Cone Clutch.	TIMKEN BEARINGS thru-out, including wheels and differential.	TIRES—Straight side type—Non-skid rear.
MOTOR—Four-cylinder, cast en bloc, 3 7-8 inch bore by 4 1-2 inch stroke, 30-35 H. P. Water Cooled. Centrifugal Pump.	S. R. O. BALL BEARINGS in clutch and transmission.	WINDSHIELD—Rain vision, clear vision and ventilating.
RADIATOR—Tubular Type.	STEERING GEAR—17-inch wheel. Irreversible nut and sector type.	TOP—One-man type, Mohair cover with Jiffy curtains and boot.
STARTER GENERATOR—Single unit, 12-volt, 40 amp. Battery.	DRIVE—Left side; center control.	LIGHTS—Electric; head (with dimmers and automatic focusing device), tail and dash.
HIGH-TENSION MAGNETO—Waterproof.	WHEELBASE—110 inches.	INSTRUMENT BOARD—Carries full equipment of oil pressure gauge, gasoline pressure gauge and pump, battery gauge, switches and speedometer. Speedometer driven from transmission.
LUBRICATION—Splash and force feed.	BODY—Real five passenger, comfortably upholstered in genuine grain leather with deep springs and natural hair.	EQUIPMENT—Electric Horn. Robe Rail. License Brackets. Foot Rail. Tools. Demountable rim mounted on rear.
GASOLINE SYSTEM—Pressure feed. 15-gallon tank hung on rear.	SPRINGS—All Chrome Vanadium steel, self lubricating.	
REAR AXLE—Full floating. Removable cover plate to give access to differential.	FENDERS—Exceptionally handsome oval design.	
TRANSMISSION—Selective sliding gear type—three speeds forward and reverse. Vanadium steel gears, heat-treated.	RUNNING BOARDS AND FOOT BOARDS—Wood, linoleum covered and aluminum bound.	
	WHEELS—Hickory; demountable rims; 32 by 3 1-2 inches.	

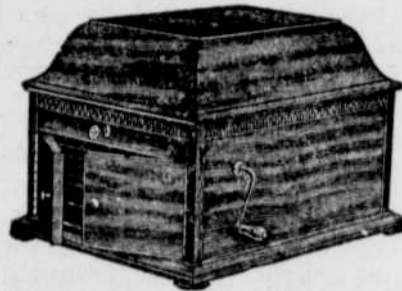
A demonstration anytime gladly given.

Agent Clackamas Garage, Estacada, Or., J. R. Morrow, Prop.



Lodges, Clubs, Granges or other Organizations

Does your club room need a new instrument? Do you want a piano, player piano, organ or phonograph? We will make you a liberal allowance on your present instrument and will so arrange the balance of your payments, that the purchase of the new instrument will not prove an embarrassment to you.



R. M. Standish
Estacada Agent

Advise us of your wants and ask for our price list of slightly used pianos and organs.



Portland, Oregon

Motorists Having Grand Trip

The party of Estacada motorists comprising Messrs. Lovelace, Sparks, Devore and families who left for an extended trip to San Francisco last Sunday morning, are keeping their friends well posted as to their whereabouts and report having experienced nothing but a good time so far.

The following cards have been received at the Progress office:

“Drain, Or. July 11, 1915-176 miles, some good roads and some bad- through Pass Creek Canyon- everything O. K. We are tired but having a good time.

Yours truly,

Lovelace, Sparks and Devore.”

“July 12, '15- 7:30 P. M. Wolf Creek, Or. Camped on Myrtal Creek, 5 miles from Glendale. All ready to enter Cow Creek Canyon in the morning. Have only gone 75 miles today, mountains oh my! Up and down grades from 10 to 30 per cent, roads very good but sharp curves and narrow. Our Dodges are some climbers. Having good luck and all having good time. Roads lined with people going and coming. Tell our friends we are all O. K.

Yours truly,

J. F. Lovelace.”

Gresham Canning Garfield Berries

The Gresham cannery is canning and packing for the Garfield loganberry growers several thousand pounds of these berries.

R. C. Deming, one of the leading local growers, has been daily shipping from 25 to 85 crates, and other growers are making large shipments.

Deming, who recently purchased a motorcycle from Ralph Reid of Garfield, is making visits to the Gresham cannery every few days, where he is keeping in close touch with the canning.

Leroy D. Walker of Portland, president of the Estacada State Bank, was an Estacada visitor last Tuesday.

Mr. and Mrs. Edgar Heiple and Mr. and Mrs. Albert Kitching of Currinsville motored up the Columbia Highway last Sunday.

An enjoyable dancing party was held last week at the home of Mr. and Mrs. W. D. Hayes at their Garfield mill camp. With refreshments, games and dancing, a good time was had.

FEEDING DAIRY COWS.

Regularity of More Importance Than Number of Times They Are Fed.

We consider it better to feed silage twice a day rather than once. If roots form at least a half of the succulence, then feed silage once a day; but if twenty-five to thirty pounds of silage are used per animal divide into two feeds, says Hoard's Dairyman. When no roots are fed it is customary to feed three pounds of silage per hundred pounds live weight.

The number of times a day an animal should be fed per day for best results, is by no means a settled question. Splendid results are obtained by feeding silage, or roots, and grain morning and night, and hay at noon. Equally good results are obtained by feeding grain three or four times a day and silage or roots three times, and hay two or three times. A very good way is to feed silage night and morning, and roots at noon. Twice a day for grain is ample, unless it is desirable to feed the cows to their full capacities, then three or four times is none too often. Hay fed twice a day is sufficient and once a day does very well. Regularity in feed counts for more than the number of times the animal is fed daily.