

# ESTACADA PROGRESS

NO. 44 OF VOL. 1

ESTACADA, OREGON, THURSDAY, JUNE 3, 1909.

\$4 A YEAR

## Estacada State Bank

Capital, \$25,000

### OFFICERS:

Geo. Estes, President. S. W. Stryker, Vice-President  
L. F. Belfils, Cashier  
E. M. Miller, Real Estate Officer

### DIRECTORS:

Geo. Estes, S. W. Stryker, T. Yocum,  
John Zobrist.

### TRANSACTS A GENERAL BANKING BUSINESS

Writes Fire Insurance in Five of the best "DOLLAR" companies. Handles Real Estate, Town Lots both Business and Residence, and Farm Property near Estacada

COUNSEL. LONG & SWEET, ROOM NO. 600 CHAMBER OF COMMERCE, PORTLAND, OREGON.

NOTARY PUBLIC ON OUR STAFF

### CORRESPONDENTS

Merchants National Bank of Portland  
National City Bank of New York

There are enough uncertainties about trading in land without guessing at the title.

BE ON THE SAFE SIDE DEMAND AN ABSTRACT OF TITLE

The CLACKAMAS TITLE COMPANY, (established 1893) makes reliable Abstracts of Title to all lands and lots in

Clackamas County

Principal Offices; Chamber of Commerce Bldg. PORTLAND.

E. F. RILEY, President. FRANK B. RILEY, Secretary

Orders for Abstracts and Extensions of Abstracts received at Estacada State Bank.

W. D. HENTHORN

L. M. HENTHORN

AT THE

## Estacada FURNITURE Store

33 1-3 % off on Kitchen Treasures and Wall Paper. 15 % off on Iron Beds. 10 % off on Queensware. A full line of Furniture on hand.

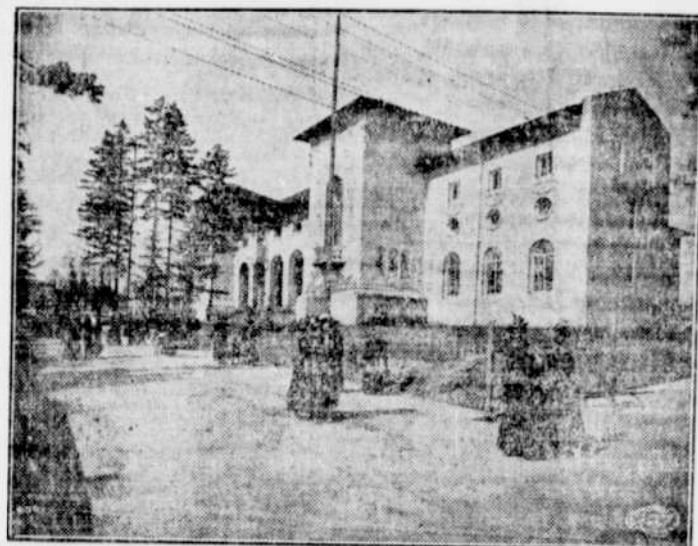
Come in and be convinced that

Estacada is the Place to Buy

These are our Cash Inducements

Respectfully

Estacada Furniture Co.



THE CALIFORNIA BUILDING AT A-Y-P. EXPOSITION, SEATTLE.

California's handsome building is one of the very striking structures on the grounds of the Alaska-Yukon-Pacific Exposition. It is in the old Spanish Mission type of architecture encountered so frequently in Southern California, and the detail of its front has attracted the attention of artists and architects from all over the country.

In the building every county of the golden state will have an exhibit. California, from Siskiyou to San Diego, has shown as much enthusiasm for the Exposition as has Washington itself.

### LOCAL NEWS AND PERSONAL MENTION

They say that this Ladies' Aid Make cakes as fine as ever made.

Revival meetings begin at the Methodist Church next Sunday evening.

Mrs. Fields, of Alspough, who has been very ill, has almost entirely recovered.

Came to the home of Frank Boyer, at Currinsville last week, a boy.

FOR SALE—I have a good fresh Jersey cow for sale.—W. J. Moore, Cazadero, Ore.

Henry Rhule, of George, who recently lost two of his fingers in an accident, has almost entirely recovered.

J. C. Herring has moved back to Cazadero again from Springwater, where they had lived a short time.

Mr. and Mrs. George Lawrence, of Portland, visited their sister, Mrs. D. C. Sherman, of Springwater, last week.

Mrs. J. W. Whitmer, of Gaines, Mich., has been visiting her sisters, Mrs. E. Simmons and Mrs. D. C. Sherman.

Good Cleveland bicycle, mud guards, coaster brake. Everything first class. For sale or trade. What have you? Dr. Adix.

FOR SALE—One 3/4 wagon, wide tire, wagon bed. Inquire at the PROGRESS.

Strawberries and coffee and ice cream, they serve, That tickle the pallet and soothe the racked nerve.

Two desirable lots, small house with water on the premises. For sale. Easy terms. E. P. Scott, or inquire of the Progress Office.

The Subject to be considered at the evening service next Sabbath is "A Good Bargain, and You Get the Best End of it." You are cordially invited. M. E. Church.

Miss Kittie Reagan and Miss Mary Dale will give a report next Sunday evening of the recent convention at McMinnville. Come and hear them, at M. E. Church, 6:45.

\$275.00 will buy a Conover, upright piano, Colonial style, mahogany finish, practically new. Retail at \$425.00.—Estacada State Bank.

J. W. Reed having disposed of the Estacada Pharmacy, desires to notify all persons indebted to it to make immediate payment of the same as well as to ask his friends to give their patronage to Miss Sturgeon, the new proprietor.

The Ladies Aid Society will entertain at the I. O. O. F. Hall on Friday evening from 7:30-10:30. They will serve you with home grown strawberries and whipped cream. There will be enough and to spare. Come and see them.

### RAIL ROAD PLANS MANY IMPROVEMENTS

Road Will Be Extended; New Power Plant Built; Many Other Improvements

B. S. Josselyn, President of the Portland Railway, Light & Power Co. just returned from the East on Sunday and gives out notice of a number of improvements contemplated, that will require the expenditure of large sums of money and require at least two years or more to complete. What interests our people most will be the extension of the rail road from Cazadero on up the Clackamas, a distance of about three miles, to where workmen for the past year and a half have been employed drilling and testing the ground to secure a good foundation for a large dam and the erection of a power plant that will develop 30,000 kilowatts per hour, the cost of which is estimated at over \$2,500,000 and will require at least the next two years to construct.

This means much for our immediate vicinity. The construction of the rail road three miles farther up the river brings closer to Estacada a vast amount of timber that is only waiting the facilities to get to market. It would be only a short distance from the end of the extension to enter one of the finest bodies of timber to be found in this part of the Cascades. That portion lying on the North side of the Clackamas and extending from the North Fork to Roaring River, an area of twelve miles long with an average of three miles in width covered with the finest kind of timber, is only one of the timbered sections it opens up. Lying on the South side of the river and extending fifty miles or more along the river and varying greatly in width in which the woodman's axe has not as yet been heard.

A large carshop for the Company's use will be built two miles North of the Oaks where steam shovels are now at work cutting down the bluff, leveling and making fills for the site. This work alone, of preparing for the erection of the shops will require a year.

Plans covering more than two years are now laid and the outline of the work to be accomplished along this company's lines and in Portland will require an estimated amount of money to carry forward exceeding \$8,000,000.

Nor is the forgoing outlined work of this company all that Estacada has to look forward to. The Morris Bros., who are promoting the power plant and developing the country lying a mile West of Estacada have already made it apparent that their operations will require in the next five years an outlay of money that will equal \$3,000,000. How is it possible to spend all this capital so

### Do You Intend To Build

If so let us figure with you on your Doors, Windows, Mouldings, Lock, etc. We have a large stock of this class of goods and can save you money.

Screen Doors \$1.00 \$1.10 \$1.25 and \$2.00.

Screen Wire Cloth 24 inches wide 14c a yard.

Screen Door Sets including spring hinges, wire door pull, hook and eye 15c a set

### Hardware Market

Nails and Wire Advanced 5 cents, this makes Glidden Galvzid Wire sell at \$3.35 per 100 feet.

American Special in 80 Rod Spools at \$2.15

Block-Tackle Wire Stretchers \$1.15 Each.

Glass Lemon Squeezers 10 cents each.

Cycle Ball Bearing Grind Stones \$4.95

Standard Mattocks 70 cents

Hunts Mattocks \$1.25

Champion Forges, handy for the farmer or contractor, weight about 80 lbs. Price \$8.00

5 lb. No. 7 Capewell Horse Nails 90 cents.

5 lb. No. 8 Capewell Horse Nails 85 cents.

Mrs. Potts Nickle plated Sad Irons 85 cents per set.

2 lb. Square Butter Prints 30 cents.

Brass King Wash Boards 43 cents.

12 Qt. Favorite Strainer Pails 70 cents.

12 Qt. Dairy Pails grade 1x 30 cents.

6 in. Monkey Wrenches 25 cents.

8 in. Monkey Wrenches 35 cents.

10 in. Milk Strainers 15 cents.

Bridge & Beach Stoves and Ranges are the Best  
 Peters Shoes Make Your Feet Glad

### Grocery Market

In buying groceries as well as other goods one should take in consideration that the freight is paid and you do not have to load up on a lot of stuff in order to have the freight paid.

5 lb. Pail Rex Lard 80 cents

10 lb. Pail Rex Lard \$1.50 cents

10 lb. Pail Sun Set Drips Syrup 50 cents.

2 Ounce Bottle Mapleine 35 cents

8 Ounce Can Royal Baking Powder 25 cents

16 Ounce Can Royal Baking Powder 45 cents

Carnation Milk per can 8 cents

10 lb. Sack White Corn Meal 30 cents

10 lb. Sack Corn Meal, Yellow 30 cents

9 lb. Sack Rolled Oats 45 cents

Extra Soda Crackers full case, per pound

Table or Dairy Salt in 50 lb. Clean Drill sacks 40 cents

2 Bottles Catsup for 25 cents

Minced Clams, Choicest No. 1 10 cents per can

Tomatoes, per dozen 85 cents

Sugar Corn 3 cans for 25 cents

### A Delicious Cup of Tea

Try Ridgways famous 5 o'clock Tea. Ridgways Tea Merchants to the late Queen Victoria by special appointment.

ESTACADA  
MERCANTILE  
COMPANY

## The Feed Store

That has bought and sold more feed since opening up, than had been previously handled in Estacada, and has a full supply now, and wants your trade is the

A. D. SCHMIDT FEED STORE

A Car Load of the famous Utah Land Plaster for your use.

I Buy Anything the farmer has to Sell and Sell him anything he needs in The Feed Line

A. D. SCHMIDT

In The New Concrete Building

\$2 a day \$10 a week

## The Hotel Estacada

ALL MODERN CONVENIENCES

One of the most delightful Resorts on the Coast

Local and Tourist Trade Solicited

close to Estacada and we not reap the benefits necessarily accruing from it?

Once again the PROGRESS sounds the alarm to arouse the men and women, who have spent the best part of their lives and endured hardships in the early settlement

of these communities, to be awake to the possibilities that lie at our very feet and share in some of the wealth they hold. This is not to be accomplished by being a hold-up-man, to take advantage of the men willing to develop the country in extracting large sums of money

## Livery, Feed & Sale STABLE

W. A. JONES

PROPRIETOR

Good rigs and careful drivers always

SPECIAL ATTENTION

Given Hunting and Fishing Parties

WOOD & LUMBER

Local and Long Distance Telephone

CHURCH SERVICES

M. E. Church—Next Sabbath

Sabbath School 10 a. m.

Preaching at 7 p. m.

League 6:45 p. m.

Prayer Meeting on Thursday Evening 7 p. m.

Church of Christ—Next Sabbath

Bible School 10 a. m.

Communion Services 11 a. m.

Young Peoples' Meeting 7:30 p. m.

Prayer Meeting on

Friday Evening at 7:30 p. m.

—E. W. Sewall, Pastor

—Free Methodist Church—

Sabbath School 2:30 P. M.

Prayer Meeting on

Wednesday evening 7 P. M.

—Rev. Roper of Gresham

for lucky opportunities we might possess that were necessary to the successful development of these enterprises, but by close observation and business tact taking advantage of the opportunities as they develop.

The Progress is one dollar a year

Subscribe now