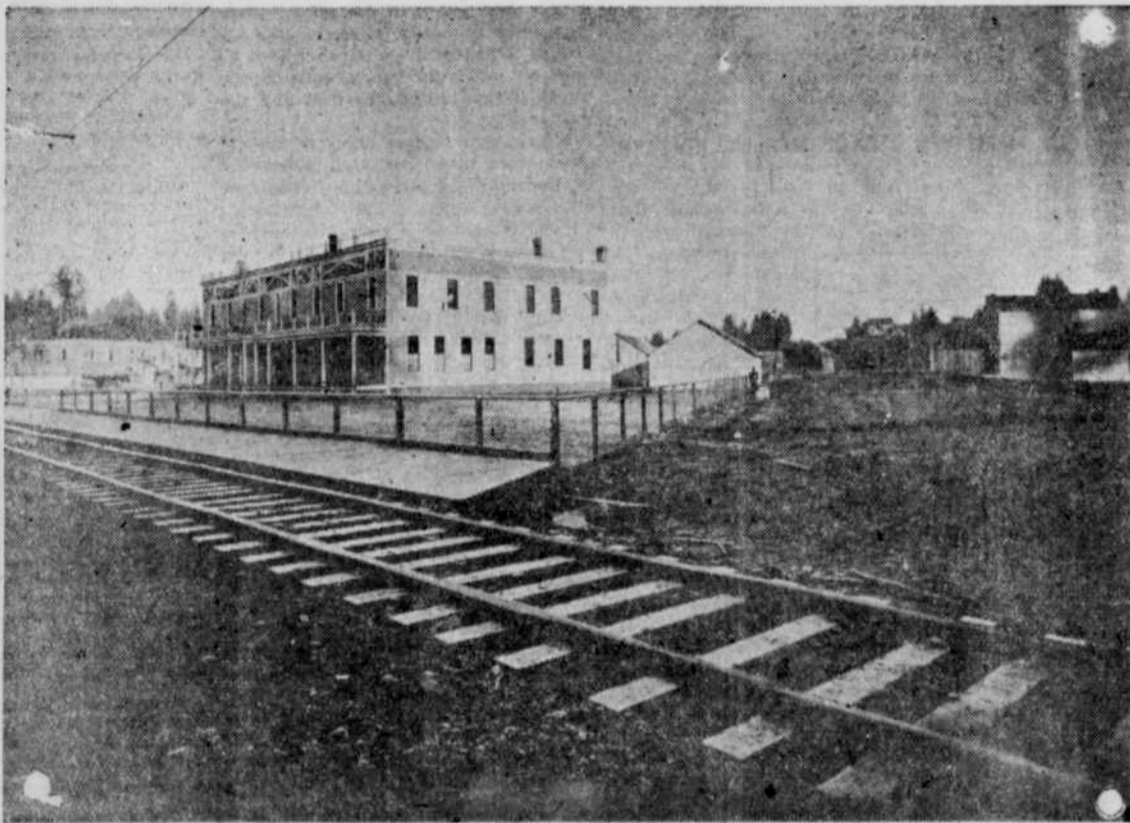


Estacada, - Oregon

This new town, one year old, is the terminal city of the Oregon Water Power & Railway Company's new railroad, 36 miles Southeast of Portland. The place is exceptionally well located to make it an ideal manufacturing center. Any amount of power can be generated from the Clackamas river. The railroad company is constructing a million dollar power plant near by. A wood manufacturing establishment is building, a large brick and tile factory coming. Other industries are looking the situation up. It has one of the best farming districts in the state.



A Scence in Estacada, Showing the Hotel Estacada, and a Glimpse of the town



Lots in this new city

For sale by the

Oregon Water Power Townsite Co.

134 First St. Portland, Oregon