

The Maupin Times

AN INDEPENDENT NEWSPAPER
C. W. SEMMES, Editor
C. W. Semmes and E. R. Semmes
Publishers
Published every Thursday at
Maupin, Oregon
Subscription: One year, \$1.50; six
months, \$1.00; three months, 50cts.

suits in hay with higher protein
content, but cutting nearer full
bloom keeps the stand in better
condition.

Frequent shallow cultivation is
most desirable in growing plants.
Begin as soon as the rows can be
followed and continue until vines
of the spreading habit cover most
of the ground. With upright sorts,
like the Spanish peanut, cultivation
should be continued practically
throughout the season. Stir the
surface as soon as the soil is
reasonably dry after the rains.

Vary the amount of feed for the
farm horse according to the work.
When a horse is to be idle on the
following day, as on Sunday, substitute a bran mash for the Saturday
night grain feed and reduce the
grain feed for Sunday to about
half the usual ration. Do not cook
or scald the mash by putting water
that is too hot in it. A teaspoonful
of salt added to the mash ration
will increase its palatability.

To avoid having weeds is far
more important than it is to kill
them. A farmer can keep his farm
almost free of weeds if he strictly
observes three principles: Prevent
weeds from going to seed; prevent
weed seeds from being brought to
the farm; and in the case of perennial
weeds, prevent them from making
top growth, for this will starve
the underground parts. For specific
advice, write the U. S. Department
of Agriculture.

Prune production in the United
States has increased greatly in recent
years. This country supplies
75 per cent of the world production.

A felt hat may be freshened by
going over the entire surface with
a piece of fine sandpaper and
then brushing vigorously.

What has been called Greater
Burns will be incorporated and town
incorporated and Burns
will hereafter be termed Hines.

Madras—Construction underway
on modern service station plant on
old First National Bank corner for
Texas Oil company.

Baker—Stoddard Lumber company
opened cut-up plant in abandoned
Baker Moulding company building.

Prairie City—Five-mile stretch of
road being improved from Dixie
Granite quarry on through canyon on
Dixie creek road.

Portland—Guardian Building and
Loan Association purchased 12-story
buyers building at Third and Alder,
for \$600,000.

HOME POINTERS

Salt, sprinkled over carpets before
sweeping helps to preserve the color
and keep the moths away.

Old night dresses are often handy
as slip covers to protect good dresses
from the dust and light.

A spoonful of vinegar added to
each quart of rinsing water will
sometimes revive faded colors in
cloth, particularly when the fading
has been caused by the use of washing
soda and strong soaps in laundering.
The garment is wrung thoroughly
and dried as quickly as possible.

There is no truth in the common
idea that some colors, such as green,
fade more easily than others, textile
experts says. There are various
classes of dyes, and some are better
than others. A blue fabric and a
pink fabric dyed with a poor quality
dye are equally likely to fade, but
if the dye is good, a green material
will hold its color with any other in
the rainbow.

PAGE, LINE AND PARAGRAPH

Dahlia plants will bear "bigger
and better" flowers if the early
buds that appear are removed. It
is desirable to remove all the buds
until the approach of cooler weather,
when the plants should be allowed
to develop normally.

A pig stunted by early weaning
will never make so profitable a hog
as it would without this setback. A
good brood sow properly fed and
handled should furnish a good flow
of milk until the pigs are 10 to 12
weeks old. A sow that can not do
this should be discarded from the
herd.

For higher yields and longer-lived
stands, cut alfalfa for hay when
the plants are well in bloom. Cutting
at an earlier stage of growth re-

A Dollar Dinner for Four



Corned Beef and Potato Puff.. \$30
Creamed Onions..... .14
Buttered Beans..... .12
Bread and Butter..... .08
Cherry Marshmallow Jelly.... .27
Coffee with Cream..... .09
Total..... .100

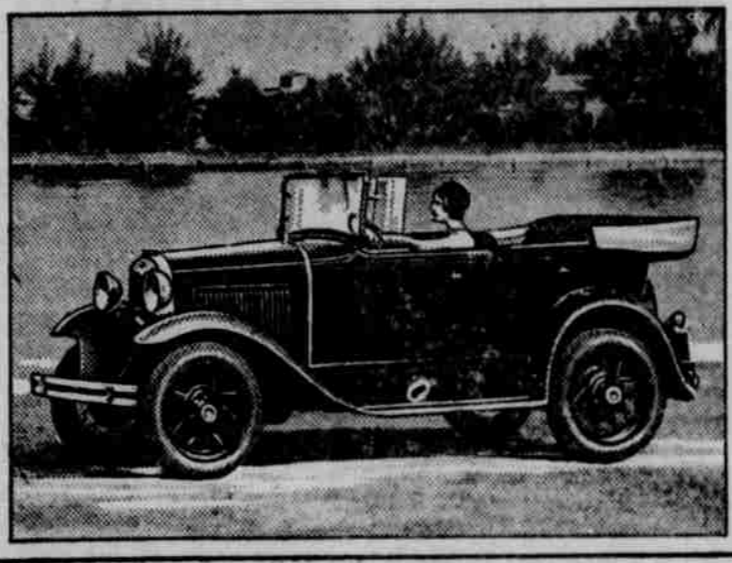
Does your food allowance ever
try to play hide-and-seek with you,
and threaten to disappear for days?
If so, just pick up this article and
hand Mr. Allowance out of hiding
by the scruff of his neck and show
him this menu for a dinner for four
people for a dollar. It will make
him come to heel without loss of
time.

And if you want to know how to
prepare the dishes

Corned Beef and Potato Puff—
Boil and mash one and one-half
pounds of potatoes, add two table-
spoons of butter, one-fourth cup of

milk, salt and pepper and beat until
light and fluffy. Shred the meat
from half a 12-ounce can of corned
beef, add to potatoes, and beat again.
Cherry Marshmallow Jelly: Soak
one tablespoon of gelatin in two
tablespoons of cold water, then dis-
solve in the boiling juice from a
number 2 can of red pitted cherries.
Add six tablespoons sugar and three
tablespoons orange juice. Pour a
little of this mixture in the bottom
of a wet mold, arrange four marsh-
mallows cut in pieces on it, and set
away to harden. Add cherries to
remainder of liquid, and when the
first layer is hard, pour this on top.
Put four more diced marshmallows
on top. Let harden in refrigerator.
Cut in squares and serve. Half this
recipe will serve four people.

New Ford Car Wins Favor



Ford Phaeton

THE Ford Phaeton, shown above, is equally popular as a family car and
as a sport car for young people. The seating arrangement provides for the
driver and one passenger in front and three passengers in the rear. Seats
are upholstered in two-tone cross cobra grain artificial leather.
The top is of the quick collapsing type, easily handled by one person,
and folds flat. The windshield, of Triplex shatter-proof glass, is of the folding
type and can be laid flat forward. The windshield wings fold over it, em-
phasizing the sport effect of the car.

Klamath Falls—W. J. Tobin re-
ceived contract, on bid of \$61,000,
for construction of 14th sewer
unit.

An invisible pocket in the seam
of a little girl's dress similar to a
boy's trouser pocket is useful when
she has to carry some money.

Wisdom in Pictures

One of the finest cartoons that has
been published in some time is that
showing a lot of Tammanyites rushing
to save a struggling farmer who
had fallen into the water. When the
drowning farmer saw who was ap-
proaching him, he yelled back: "Go
away, you fellows; I don't want to be
saved."

Marse Henry's Idea

Colonel Henry Waterson wrote an
editorial in his newspaper, the Louis-
ville Courier Journal, in which he
remarked that the observant and
thoughtful onlookers had long been
of the opinion that "the people of New
York are incapable of self-government."—M. R. Werner in Tammany
Hall.

Women Are Partners

More than ten million women march
to work every morning side by side
with the men. Stendly the impor-
tance of women is gaining not only
in the routine tasks of industry, but
in executive responsibility. I include
also the woman who stays at home
as the guardian of the welfare of the
family. She is a partner in the job
and the wages.—HERBERT HOOVER
in his Newark speech.

The Wrath of a Boss

On October 17, 1913, by a vote of
43 to 12, the Court of Impeachment
voted to remove William Sulzer from
the office of governor of the State of
New York. It was the first time in
the history of the state that a gov-
ernor has ever been impeached, and
its most powerful lesson was the
power of a Tammany Boss's wrath.—
M. R. Werner in Tammany Hall.

Successful Business Enterprise
Demand working capital and
Banking Credit available at need.
Every accommodation consistent
with sound banking practice is ex-
tended to patrons of this institu-
tion.
LET US SERVE YOU
Maupin State Bank
(INCORPORATED)

William C. Schmitt received con-
tract to construct beacons every 10
miles and emergency landing fields
30 miles apart on Portland-Pasco
section of Portland-Spokane airways.

NOTICE OF ANNUAL SCHOOL MEETING

Notice is hereby given to the
legal voters of School District No.
84, of Wasco county, State of Ore-
gon, that the annual school meet-
ing of said District will be held
at the High school building; to be-
gin at the hour of 2:30 o'clock p.
m. on the third Monday of June,
being the 16th day of June, A. D.
1930.

This meeting is called for the
purpose of electing one director and
clerk and the transaction of busi-
ness usual at such meeting.
Dated this 21st day of May, 1930.
H. R. Kaiser,
Chairman Board of Directors.

NOTICE FOR PUBLICATION

Department of the Interior
U. S. Land office at The Dalles,
Oregon, May 8, 1930.

Notice is hereby given that
William Fischer
of Maupin, Oregon, who, on January
28, 1925, made H. E. 023605 under
act February 19, 1909 for SE 1/4, sec-
tion 25, T. 5 S., R. 13 E., Lot 4 sec-
tion 20, Lots 1, 2, section 31, T. 5 S.,
R. 14 E. W. M., and on November 26,
1927, made additional H. E. 025325
under act December 29, 1916 for
NE 1/4 SE 1/4, Sec. 13, SW 1/4 NE 1/4, E 1/4
SE 1/4, Sec. 24 T. 5 S., T. 13.,
and Lot 4, Sec. 18, NE 1/4 SW 1/4, Sec. 5,
Township 5-South, Range 14-East,
Willamette Meridian, has filed notice
of intention to make final three year
proof, to establish claim to the land
above described, before F. D. Stuart,
United States commissioner, at Maupin,
Oregon, on the 22nd day of July
1930.

Claimant names as witnesses: John
Foley, Frank Lister, W. J. Harris,
W. H. Williams all of Maupin, Ore-
gon.
M22-119.
J. W. DONNELLY, Reg.

CLASSIFIED COLUMN

MULES FOR SALE—Span of good
work mules, weighing about 1,350
in good condition; about 9 years
old and ready for work. Harness
goes with team. Reasonable
price. Write or call on O. L.
Paquet, Wapinitia, Oregon.
30-14*

FOR SALE—Dry pine and fir wood,
\$4.50 per cord in timber or \$7.50
delivered in Maupin or in vicinity.
Inquire of C. H. Walker, Maupin,
Oregon.
28-14*

FOR SALE OR TRADE—Gentle
saddle horse. Address Everett
Wilson, Route No. 2, Dufur, Ore.
25-14

BUICK FOR TRADE—1925 Buick
roadster to trade for horses. Ad-
dress Everett Wilson, Route No.
2, Dufur, Oregon.
25-14.

Schedule Changes
Oregon Trunk
Sun., June 1st

Effective above date general
changes will go into effect between
Portland and Bend, under which
the time at Maupin will be as fol-
lows:
Leave for Portland, No. 103, 1:30
a. m.
Arrive at Portland, 7:30
Arrive from Portland, No. 102,
3:16 a. m.
Leave Portland, 9:30 p. m.

Full information of
E. W. GRIFFIN, Agent.
L. S. Davis, Trav. Pmgr. Agt



Wm. A. SHORT
Dentist
MAUPIN . . . OREGON



25 Cents
buys the best and largest meal
served in The Dalles, at
The Green Front
Sandwich Shop
Next to Dalles Creamery

WAPINITIA
I. O. O. F.
Lodge No. 208, Maupin, Oregon
meets every Saturday night in I. O.
O. F. hall. Visiting members always
welcome.
Roy R. Crabtree, N. G.
B. W. Welch, Secretary.

LOW FARES East

EFFECTIVE MAY 22ND TO SEPT. 30TH
FINAL RETURN LIMIT OCTOBER 31ST
LIBERAL STOPOVERS GOING AND RETURNING

Table of fares for various cities: DENVER 57.20, PASADENA 75.50, KANSAS CITY 75.50, ST. LOUIS 85.50, CHICAGO 90.30, DETROIT 100.50, CINCINNATI 110.50, NEW ORLEANS 112.35, CLEVELAND 112.50, TORONTO 112.50, ATLANTA 121.85, PITTSBURGH 124.00, WASHINGTON 115.50, PHILADELPHIA 149.22, NEW YORK 151.70, BOSTON 167.70.

Leave MAUPIN 11:10 A. M.
(Sundays 10:36 A. M.)
connecting at
Sherman with the
CONTINENTAL
LIMITED

Also Connection with the famous
PORTLAND LIMITED
Only Thru Train Portland to Chicago
LEAVES THE DALLES 9:30 P. M. DAILY

UNION PACIFIC
R. B. BELL, Agent, Maupin, Ore.
H. D. ATHON, Trav. Freight and Pass. Agt., Bend, Ore.

SHIP BY TRUCK
REGULAR FREIGHT LINE SERVICE
Between PORTLAND — THE DALLES — MAUPIN
THE DALLES TRUCK LINE Inc. SPICKERMAN'S TRUCK LINE
PORTLAND-THE DALLES THE DALLES-MAUPIN
and Way Points and Way Points
BONDED & INSURED CARRIERS

Thousands of New Words
spelled, pronounced, and defined in
WEBSTER'S NEW INTERNATIONAL DICTIONARY
The "Suprema Authority"
Here are a few samples:
hot pursuit, Red Star, Air Council, capital ship, mud gun, mystery ship, S. P. boat, irreverent, aerial cascade, Ethonia, American Legion, Blue Cross, girl scout, airport, cyper, crystal detector, sippio, superheterodyne, phonon.
G. & C. MERRIAM CO.
Springfield, Mass. U. S. A.

WERNMARK SHOE STORE
Shoes and Repairing
Wasco County's Exclusive Shoe Store
Shoes for the General Repairing
Whole Family The Dalles, Ore.

Bend-Portland STAGE SCHEDULE
LEAVES
Maupin 10:00 a. m.
Maupin 4:45 p. m.
ARRIVES
Portland 2:00 p. m.
Bend 8:00 p. m.
BEND-PORTLAND STAGE CO.
Depot—Rainbow Cafe

White Restaurant
PRIVATE BOOTHS
Where the best 35 cent meal is served in The Dalles
Next The Dalles Creamery
C. N. Sargent, - Prop.