

THE SEASON'S OPENING

Dance



Legion Hall

Maupin, Oregon

Music will be furnished by the best orchestra in Eastern Oregon,

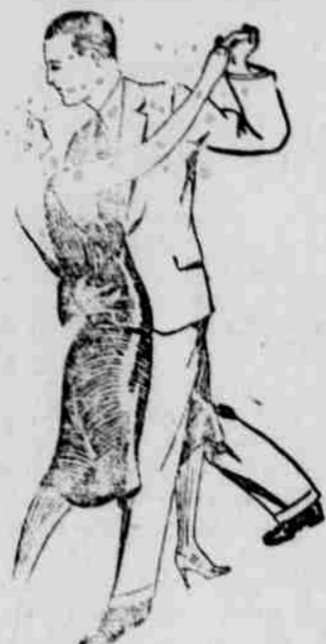
Seck's Columbians

Dance will be held on evening of

Sat. Sept. 21

Supper served by Ladies Auxiliary

Dance Tickets \$1.00. Supper Extra



The Maupin Times

AN INDEPENDENT NEWSPAPER

C. W. Semmes, Editor
C. W. Semmes and E. R. Semmes
Publishers
Published every Thursday at
Maupin, Oregon

Subscription: One year, \$1.50; six months, \$1.00; three months, 50c.

Entered as second class, mail matter September 8, 1914, at the post-office at Maupin, Oregon, under the Act of March 8, 1878.

RECORDS IN ROADS

During the last ten years, the United State has gone in for road construction on a scale never before known to the world. It is estimated we have spent in that time ten billion dollars for road building and maintenance and have more than half of the world's 6,500,000 miles of highways.

Money spent for roads pays dividends in promoting agriculture and industry, facilitating business and drawing strangers from other places on social or business pursuits. A county or state without good roads is condemned to retrogression.

In spite of our record building activities, the demand for roads is more persistent than ever. Our secondary road system must now be rapidly improved to properly open up territory contributory to main highway.—The Manufacturer.

PAGE, LINE AND PARAGRAPH

A Once-A-Week Service to Weeklies and Semi-Weeklies

Fall-own oats in the Southern states should follow crops that can be removed from the land in time to permit sowing the oats in early fall. Late seeding is believed to be responsible in part for the low yields secured from this crop in the south. The open-furrow method of sowing oats will give some protection against injury from winter killing.

Sixteen farmer owned and operated cotton marketing associations with approximately 100,000 members handled more than 1,000,000 bales of the 1928 cotton crop. The best record was made by the Oklahoma Cotton Growers Association, Oklahoma City, which received more than 363,000 bales from its 25,000 members.

There is no economy in having the cow thin at calving time. A cow in good condition starts off the lactation period at a higher level of production than a thin cow and gives a larger yield of milk for the year. Since the cow normally loses weight for 3 or 4 weeks after calving, she should carry considerable flesh at the time. Feed during the dry period should be high in minerals, especially calcium, or lime, and phosphorus. The calcium can be supplied by good pasture in summer and well-cured leguminous hay in winter. Most of the high-protein feeds, such as wheat bran and the oil meals, are good sources of phosphorus as well as of protein.

HOME POINTERS

It is best never to grease an electric waffle iron. If the waffles stick one or two extra table spoons of melted shortening in the batter will often solve the problem.

Junket desserts provide an easy means of feeding milk to a child who does not like to drink it. It may be flavored in a number of ways, with extracts, concentrated maple syrup, or carmel syrup. It may also be served with sliced fresh fruits, or with a spoonful of jelly or jam.

A delicious sandwich filling is made of chopped pecan meats, almonds or other nuts; with just enough honey to act as a binder. Another filling is made of cream cheese and honey, with nut meats added if desired. These make healthful sweets for the school child's lunch box.

Honey is best kept in a warm place, as cold makes it clod or granulate.

"INSIDE" INFORMATION

Do you know Farmers' Bulletin 1530-F, "Fitting Dresses and Blouses?" It will help in your dress-making problems.

Iron rust stain on white materials often respond to lemon juice. Spread the stained place over a vessel of actively boiling water and then put lemon juice on the stain. After a few minutes, rinse the fabric and repeat.

Try a mock duck when you want a palatable, inexpensive baked meat. It's really a flank steak, stuffed

with a bread crumb dressing, rolled, tied and baked. Be sure to roll it lengthwise so that in carving the meat in cut across the muscle.

Bacon sandwiches out-of-doors can be made wherever one's picnic party happens to be. Each person can cook his own piece over a fire in the woods with the aid of a forked stick. Many persons enjoy a leaf of crisp lettuce in a bacon sandwich.

A simple remedy for a scorch stain is to moisten the stain with water and place in the sun. For more serious cases a piece of cloth moistened with hydrogen peroxide may be placed over the stain, covered with a dry cloth, and the spot ironed with a medium hot iron. If the hydrogen peroxide soaks thru, replace the upper cloth. Be careful to see that the peroxide does not touch the iron as it will cause it to rust very badly. Rinse the garment thus treated before ironing. This method must be used carefully on colored fabrics as the dyes may be bleached out.

R. W. Richmond and wife are at home again, after having spent a week at the ranch on Badger creek.

Special on 25-cent Script mechanical pencils. While they last sell at 10 cents at the Maupin Drug Store.

STAGE SCHEDULE OF Bend-Portland Stage Co

Round Trip Daily	
Going East	
Leave Portland	1:00 p. m.
Arrive Maupin	4:50 p. m.
Going West	
Leave Bend	7:00 a. m.
Arrive Maupin	10:30 a. m.
Arrive Portland	2:50 p. m.

Stage stop at Hotel Kelly and the Rainbow garage in Maupin; at Imperial Hotel in Portland.

Reduced ROUND TRIP FARES

Now In Effect via OREGON TRUNK RY. Between MAUPIN and

Portland, Vancouver, Wishram, and Intermediate Stations
Tickets on sale daily August 25 to November 30.
30 Day Return Limit
ROUND TRIP FARES From Maupin

Portland	\$9.45
Vancouver	\$9.45
Madras	\$3.60
Metolius	\$3.95
Bend	\$6.10
Redmond	\$5.10

Reduced Fares to Other Points
Trains leave Northbound for Portland at 1:10 a. m. daily.
Southbound for Bend at 2:33 a. m. daily.

Full information of E. W. GRIFFIN Ticket Agent L. S. DAVIS Trav. Pass. Agent



Trucking

Long Distant Hauling A Specialty

INSURED CARRIER
ELZA O. DERTHICK
Phone 5188

ZELL'S FUNERAL SERVICE

Undertaking and Embalming
AMBULANCE SERVICE
Call Maupin Drug Store
Phone-345

CLASSIFIED COLUMN

SPRING CHICKENS—Two hundred Rhode Island red, 200 Banded Rocks and 100 White Leghorns—all thoroughbred stock—also a few turkeys, for sale reasonable. Inquire of Floyd Richmond at the service station. 56-12

CHOPPED HAY—Phone your orders for chopped hay now, as it won't last long. We will be chopping by September 20. Con B. Buckley, Tygh Valley 45-12*

FOR RENT—Five-room cottage for rent. Inquire of Mrs. H. F. Bothwell. 44-12*

FOR RENT—700 acres of pasture land, 640 acres inclosed with 5-wire fence, on highway, also 4-room house and garage. School bus passes house. 43-12*

PEACHES FOR CANNING—Albertas and Salways, two miles east of The Dalles on old Dufur road. \$1.00 per lug. 43-11*

FOR SALE—Bean threshing outfit; one 22 calibre Winchester repeating rifle; one 30-30 Winchester carbine. See or call on Otto Herrlin, Criterion, Oregon. 43-12*

FOR SALE—High grade piano near Maupin. Will sacrifice for quick sale. Tallman Piano Store, Salem Oregon. 41-13

WAPINILLA I. O. O. F. Lodge No. 208, Maupin, Oregon meets every Saturday night in I. O. O. F. hall. Visiting members always welcome.

Willard Cunningham, N. G. Everett Hazen, Secretary

Dr. WM. KENNEDY
DENTIST
DENTAL X-RAY
First National Bank Bldg.
The Dalles, Oregon
Phone 391



PERFECTION FLOUR
IT'S THE BEST
Central Oregon Milling Co.
Maupin, Oregon

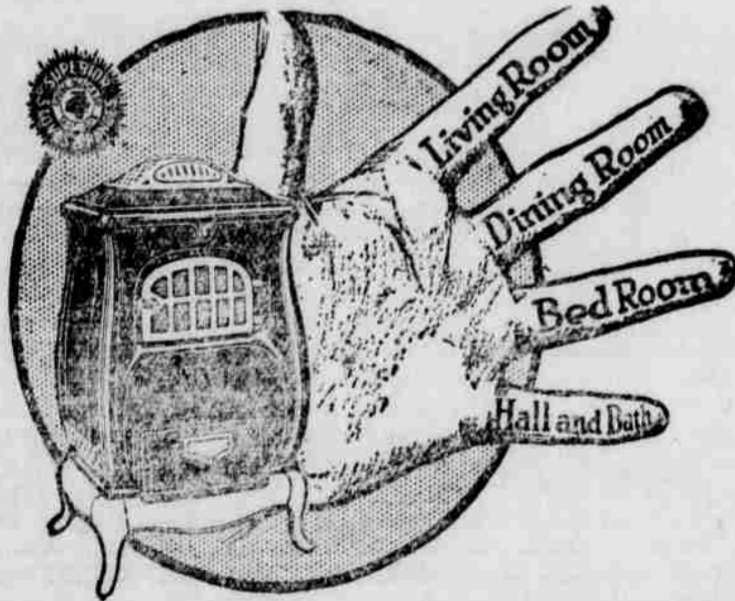
Your Watch Haywire?
If it is not doing its work bring it to The Times office and Mr. Semmes will send it to
GUY A POUND
Manufacturing Jeweler and Watchmaker
Successor to D. Lindquist
THE DALLES - OREGON

WERNMARK SHOE STORE
Shoes and Repairing
Wasco County's Exclusive Shoe Store
Shoes for the General Repairing
Whole Family The Dalles, Ore.

White Restaurant
PRIVATE BOOTHS
Where the best 35 cent meal is served in The Dalles
Next The Dalles Creamery
C. N. Sargent, - Prop.

DOCHERTY-POWERS DISSOLUTION SALE

A Special Showing of Warm Air Circulating Heaters! To Heat Every Room in the House



A Type, A Size, A Finish, A Price for every home

ALL ENAMEL

Coal burning circulator, a size built to heat 2 or 3 big rooms economically. Extra heavy cast fire-pot, large ash can, only \$49.50

YOUR CREDIT IS GOOD WE CHARGE NO INTEREST
DOCHERTY-POWERS
Third and Washington Streets, The Dalles