

FOUR-SQUARE TEST FOR GOSPELS TOLD IN EUGENE SERMON

will be laid on Water street between Mill and West D streets in the near future. The line is staked out and grade ready for another 50-foot section between Eighth and Ninth streets on B. The walks in Springfield have been improved and added to lately for the new mail carrier service which was granted this year.

Interest Growing In Revival Here

Tonight will be "rest night" at the two-pole tent on south Willamette street where a revival campaign is still in progress under the direction of Dr. Miller, of Ashland. Today Mr. Miller and family took a trip to Albany but will be here again for Tuesday evening's service.

INTEREST GROWS IN CHAUTAUQUA

Tickets are selling rapidly for the annual Chautauqua program which opens next Tuesday in the big tent at the corner of Eleventh avenue and Olive street. Season tickets are on sale in a number of local business houses, and will continue until 6 o'clock p. m. of the opening day when they will advance 50 cents in price.

Alton Packard, known as one of the best cartoonists in the country, presents the opening program Tuesday night after the opening exercises and announcements. Following this the program for the rest of the week is as follows:

Wednesday
Morning—Organization of Junior Chautauqua.
Afternoon—Lecture, Chautauqua superintendent; concert, Leake's Orchestral entertainers.
Evening—Prelude, Leake's orchestral entertainers; lecture, "Back From Russia," Captain Sturdivant K. Goshumson (American citizen).

Thursday
Morning—Junior Chautauqua.
Afternoon—Lecture, "In the Other Fellow's Shoes," Omar Fred Sweet; concert, Boushoun-Pellele Duo.
Evening—Prelude, Boushoun-Pellele Duo; lecture, "The Problem of the World Peace," Dr. George O. Falls.

Friday
Morning—Junior Chautauqua.
Afternoon—Costumed impersonations, Roseth Knapp Breed (Boston's noted entertainer).
Evening—"The Mikado," Sullivan's masterpiece, Mae Valentine company.

Saturday
Morning—Junior Chautauqua.
Afternoon—Lecture, Chautauqua superintendent; concert, Charles Mitchell Mixer Concert Trio.
Evening—Prelude, Charles Mitchell Mixer Concert Trio; lecture, "The Player in the Show," Capt. T. Dinmore Upton.

Sunday
Morning—Junior Chautauqua.
Afternoon—Special children's feature, Margaret Byers and assisting artists.
Evening—"Daddy Long Legs," New York's great success.

Tuesday
Band Day
Morning—Junior Chautauqua.
Afternoon—Concert, Maupin's singing band.
Evening—Concert, Maupin's singing band.

REGON MOTOR CO.
Phone 949 930 Olive

SEVERE QUAKE HITS MONTANA

(Continued from page one)

Park covered 500 feet of railroad track nearby, leaving it buried under earth and rocks 100 feet deep. This was caused when a cliff, 800 feet high, toppled and fell.

Thousands of persons in Butte, Great Falls, Billings, Livingston, Missoula, Helena and other cities and towns were thrown into a near panic and rushed clear of buildings. The shocks continued intermittently until well after 10 o'clock. Yesterday there were slight recurrences at Three Forks, White Sulphur Springs and Anaconda.

Towns Are Hit
Three Forks, Manhattan and Logan, all near the junction of Madison, Gallatin and Jefferson rivers, which form the source of the Missouri, sustained the greatest loss. The count house at White Sulphur Springs fell and several smaller structures were demolished. The loss there will exceed \$100,000 it is said, and Three Forks, where the damage was greater, lost about \$200,000, reports say. Three Forks residents counted 41 distinct shocks, they reported.

Jefferson river, a short distance above the confluence point, was lowered two feet by the quake. Hundreds of men were working in the mines at Butte and Anaconda as the earth's surface trembled, but in the 1,000 miles of underground workings, there was no damage, according to Butte reports. The miners looked to the surface when they felt the shocks.

Buildings Twisted
Leaning walls and twisted buildings in Manhattan and Three Forks, probably will have to be razed by dynamite in order to forestall danger of their falling, residents said. Guards are posted about the structures and no one is allowed to go near them.

Miss Mildred Waters, a telephone operator at Manhattan, stuck to her post Saturday night, until the wobbling of the company's building convinced her that it was time to move. She tripped and fell down a flight of stairs as she started to flee and was painfully injured.

Near Three Forks an automobile was heaved over an embankment by the quake and its two occupants were slightly injured. In all other cases, where injury was caused none was caused directly by the quake.

Pranks are Played
Outside of the area which sustained the most damage, the quake played a thousand pranks. At Billings, A. C. Gallagher, a painter was gilding the cross on the spire of St. Patrick's Catholic church, when the shock of Saturday night was felt there. The cross swung three feet, he said, in a north and south movement. He clung to the cross until the worst tremor was over, and then called it a day and descended.

Dr. C. P. Clapp, president of the University of Montana, who is considered an authority on geology, declared last night the probable cause of the tremor was the moving of a "fault" in the eastern part of the mountains in that vicinity have many faults, which are broken strata, pushed up or down by convulsions of the earth.

TRACKS BEING CLEARED
LEWISTOWN, Mont., June 29.—A force of 2,000 laborers will be required to clear the railroads which last night blocked the tracks of the Chicago, Milwaukee and St. Paul railroad near Lombard, railroad officials declared here today. The work will take 15 days, the officials claim.

One section of the track at Dear Park, is buried for 500 feet under a layer of rocks and dirt, more than 100 feet deep, where a cliff, 800 feet high, toppled over.

According to advices here, the landslide struck a small tunnel 80 feet long and split it wide open.

STATISTICS
BORN
DANIELS.—At the Franklin boulevard auto ems, June 27, 1925, to Mr. and Mrs. Henry G. Daniels of Sutherland, Ore., a daughter, weight 8 pounds, name, Esther.

Wetherbee-Powers

Offers 5 Days of Super Values

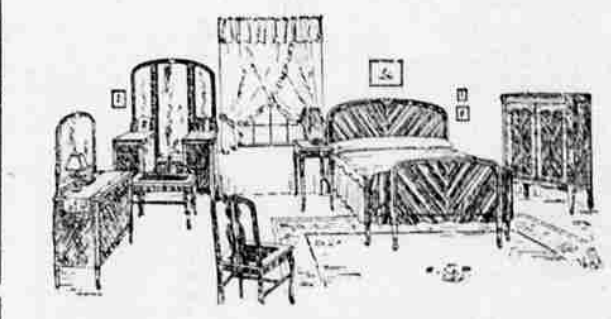
In This

Pre-Inventory Sale

300 Pieces of High Quality Furniture Reduced 15%, 25%, 33 1/3% and 50%

A sale for those folks who seek the greatest possible values before deciding to purchase. When you measure the offerings in this sale from the standpoint of good taste and inherently good quality of workmanship and finish, as well as from the viewpoint of price—the values are emphasized.

YOUR CREDIT IS GOOD ON ANY PURCHASE YOU MAKE—EVEN AT THESE SPECIAL PRICES "WE CHARGE NO INTEREST"



- YOU SAVE LIKE THIS ON THINGS FOR THE CHAMBER

\$385 Five-piece Bedroom Suite consisting of full size bed, triple plate vanity, Chiffonette, bench and rocker. Well made, and perfectly matched—in rich American Walnut with bird-eye Maple inlays **\$298**

\$29.50—3-piece Bed outfit consisting of full size Steel bed in Ivory Enamel, a good steel link spring and a 40 pound layer felt mattress in pretty art ticking **\$24.85**

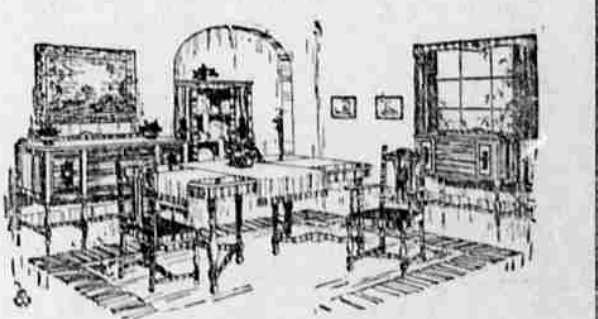
\$47.50 Nachman Spring-filled Mattress in heavy art ticking, staple cotton filling, well tufted **\$39.50**

\$23.50 Kapo Felt Mattresses, 1/2 silk floss and 1/2 cotton, in pretty floral ticking with stitched edge in contrasting sateen **\$18.95**

Picnic and Market BASKETS
Values up to **\$1.25**
All sizes, styles, finishes—for shopping, picnics, etc., while quantity lasts, choice each **49c**

Values up to **\$2.75**
Japanese braided styles, heavy market baskets, dainty lunch baskets, choice each **95c**

10 Only
SILK LAMP SHADES
Values to \$15.50 Choice **\$2.95**
Silk lamp shades, one of a kind, which have been used as floor samples. 10 only—all different styles, at the one price.



VALUES LIKE THESE—NUMEROUS ON

Dining Room Furniture

\$150—8-piece Dining Group in quartered Oak, Jacobean style with two tone inlays—Buffet Extension Table, 5 Side Chairs and one Host Chair in rich brown leather, now **\$129.75**

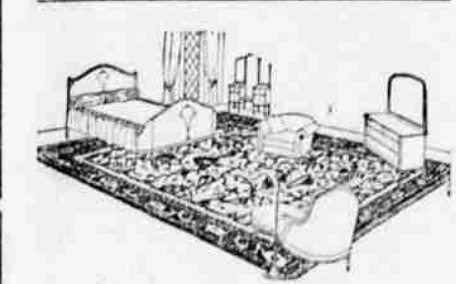
\$52 Lundin Leaf Dining Table with 54-inch top—in combination Walnut, special finish, offered in this sale **\$34.85**

\$89.50 China Closet in Italian design—antique Walnut finish, offered in this sale **\$39.85**

Several styles of Odd China Cabinet—in Walnut and Oak, now ONE-HALF OFF.

KITCHEN CABINETS
\$93.50 Sellers "White Beauty" kitchen cabinet, in perfect condition—a new style, **\$78.75**
for
\$94.50 Sellers Kitchen Cabinet in Oak, pretty golden finish, completely equipped—new style **\$76.85**

"Voss" Electric Washers
\$98.50 "Voss" Oscillating Electric Washer with heavy copper tub, wringer, slightly used—guaranteed for satisfaction **\$83.75**
\$115 large style "Voss" Electric Washer with copper tub—built for extreme satisfaction **\$98.50**



RUGS—LINOLEUMS
ALSO INCLUDED IN THIS SALE

\$74 Heavy quality Body Brussels Rugs in 9x12 size, in all over designs, colors in rose and blue combinations, **\$49.75**

\$49.50 Body Brussels Rugs of same quality in 5x10-4 size, for **\$43.50**

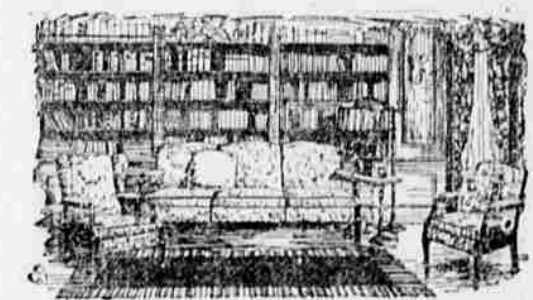
Seamless Tapestry Rugs with fringed ends, in 3x12 room size, very pleasing patterns and color combinations, for **\$25.85**

9x12 Seamless Velvet Rugs with fringed ends, good assortment of patterns and colorings, very special **\$39.85**

Felt Base Linoleum in floral patterns, tile effects, block effects, in colors of blue and gray, brown, etc., 34 7/8" **69c**

9x12 Grass Rugs in cool, summer colorings while quantity **\$5.95** lasts

9x12 "Gold Seal" Congolet Rugs, good assortment of new patterns and colors, special each **\$16.95**



Living Room Furniture
Never So Reasonable

\$24.50 Arm Chair with Mahogany finished frame, prettily turned legs and tapestry upholstered seat **\$14.25**

\$225 Luxurious Overstuffed Davenport upholstered in pretty wool tapestry, with modulation seats and backs, loose spring filled cushions **\$147.50**

\$98 Tapestry Upholstered overstuffed Davenport, loose cushion seats—of very fine construction now **\$69.85**

\$69 Occasional Arm Chair, beautifully upholstered in fine imported Italian brocade **\$36.85**

\$44 Case Panel Back Arm Chair, finished in Mahogany, upholstered in good grade of Tapestry **\$19.75**

DINNER SETS
REDUCED LIKE THIS

\$21.50—62-piece Semi-Porcelain Dinner Set with neat hand edged pattern of black and gold **\$16.75**

\$18.75—42-piece American Semi-Porcelain Dinner Set in dainty figured decoration, now **\$13.50**

\$22.50 very handsome Nippon China Dinner set of 41 pieces—with wide gold hand edged and full gold handles **\$16.75**

BUFFET MIRRORS
\$17.50 Plate Buffet Mirrors with mitered end panels, polychrome frames in old gold and old silver **\$13.95**

\$13.50 Buffet Mirrors of same styles and patterns, smaller sizes **\$10.85**

Draperies

The Savings Are Worth While

\$6c grade Dotted Marquisettes in beige and white, 500 yards offered at yard **39c**

\$1.50 quality imported Cretonnes from Alsace, France, others in quality English patterns, 500 yards to be offered at **98c** yard

95c Fiber Silk Gauze in popular shade of beige, special **79c** yard

Fine quality Marquisette Ruffled curtains in plain white, blue dotted and plain white with blue ruffles—all with dainty ruffles and the backs, pair **\$1.98**

5c quality domestic Cretonnes in good assortment of colors and patterns, some remnant lengths, yard **19c**

WETHERBEE - POWERS
EAST NINTH AND OAK

Use Your Credit

Springfield to lay Cement Sidewalks

SPRINGFIELD, June 29.—(Special)—A survey and grading for two miles of new concrete sidewalk in Springfield have been completed under the direction of Simon Klovahl, city engineer. A 50-foot stretch of walk

Sample Baby Carriages

Many Styles—Sizes—Colors
One of a Kind in Stock

25% To 33 1-3% Less

Sample Baby Carriages that are one of a kind in stock secured through a very advantageous purchase—offered this week at prices from 1/4 to 1-3 less than regular. All are carriages of very best construction—new in design and finish. Choose your this week.

\$54 Genuine Reed Carriage, Reversible Gear, \$39.85
Genuine Reed Carriage with reversible gear, artificial wood wheels and reclining back. Full corduroy lined, heavy cushions and craft trimmed in frosted Mahogany Enamel **\$39.85**

\$48.50 Roll Hood Carriage In Fiber Reed \$36.85
Fine woven fiber reed carriage in ivory enamel, with roll hood, corduroy lining, nickel trimmed—reclining back and rubber tired wheels. An extra large size **\$36.85**

\$37.00 Genuine Reed—Four Wheel Sulkey \$23.85
Genuine Reed Sulkey with reclining back, spring gear and large reed hood. Equipped with rubber tired wheels, finished in ivory enamel **\$23.85**

\$19.50 Flat Reed—Reclining Back Sulkey \$13.75
Large size sulkey in flat reed with folding hood and handle, reclining back—finished in ivory enamel **\$13.75**

MANY OTHER NUMBERS NOT LISTED

Use Your Credit

WETHERBEE - POWERS

We Charge No Interest