

CRUDE RUBBER IS UP, SO TIRES ARE ALSO ON CLIMB

(By NEA Service)
AKRON, O., June 12.—A 200 per cent increase in the price of crude rubber over that of last year may cause another jump in tire prices.

It will mean an additional outlay on the part of automobile owners, of from \$1,000,000,000 to \$200,000,000 this year.

This is the result of both natural and governmental restrictions in the growth of crude rubber, say tire manufacturers here.

And the British government has reduced the amount of rubber that can be exported from its rubber domains hereafter.

The result is an increase in the price of crude rubber far above even its former price peak five years ago. Then, the price of crude rubber reached its height at 45 cents a pound. It went down again to as low as 20 cents a pound last year.

But with the passage of the British restriction act, and bad weather prevailing, the price has risen above 60 cents a pound.

At the same time, little crude rubber is available for use. The large tire manufacturers have been able to stock a seven-week supply.

The United States is expected to consume 400,000 tons of raw rubber this year, compared with 315,000 tons last year. The total world consumption of rubber is expected to be about 510,000 tons.

So with bad weather conditions, British restrictions and much greater consumption, higher prices for tires are practically inevitable.

Cars From Many States in Oregon

SALEM, Ore., June 12.—During the month of May automobile tourists visited Oregon from every state except Delaware, Georgia, New Hampshire and Tennessee, from the territories of Alaska and Hawaii and from Canada, says a statement by Secretary of State Kozier.

The total registration of non-resident motorists for the month was 6167. For the first five months of the present year the total was 14,933. Most were from California, with Washington second and Idaho third.

The Ashland registration station shows the highest record of registrations, with 1706 for May and 8339 for the first five months. Medford was second with 1079 in May and 2540 the first five months of the year.

In eastern Oregon the Ontario station was first in May with 261 and none the previous four months. Pendleton was first in eastern Oregon for the five months with 372.

Fuels tax fund is Still on Increase

SALEM, Ore., June 12.—Since the enactment of the first motor vehicle fuels tax in 1919 the funds accruing to the state from that source have aggregated \$8,496,390.26, says a statement by Secretary of State Kozier.

During the month of April, this year, \$220,221.40 was collected.

The law allowing refunds on fuel used for purposes other than vehicles operating on the highways was amended by the 1923 legislature in two ways. The time for filing claims for refunds was extended from 90 days to one year, and the rate of refund on distillate was changed to 24 1/2 cents a gallon, so that it now includes the tax assessed by the law of 1919.

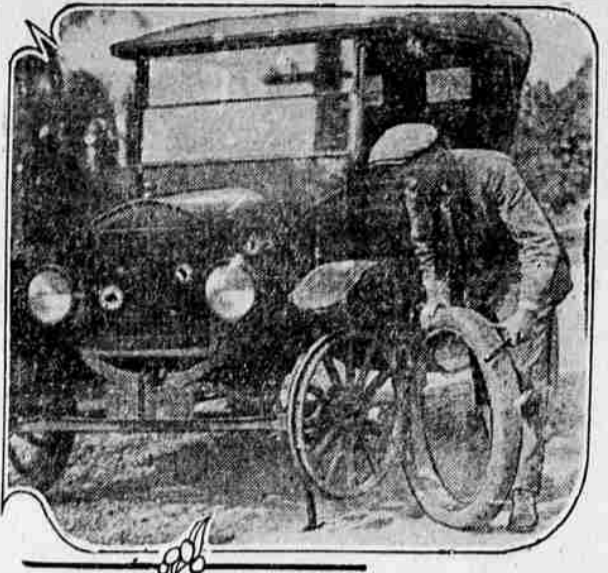
"THAT'S EXACTLY HOW I STARTED MY FIRST \$1000!"

You'll be surprised at how quickly you can save \$1000 after you open a savings account.

By depositing only one dollar or more, you can open a savings account today. Take home one of the little book banks and let it help you save the loose change that usually seems to just evaporate.

You cannot begin too early to instill the habit of thrift in your children. And the best way to encourage thrift is to have a savings account.

A STORY WITHOUT WORDS



High Automotive Production Will Hold up, is View

High automotive production will continue well through the second half of 1924 it is expected by R. H. Grant, sales manager of the Chevrolet Motor company, who has spent three months of the current year visiting in direct contact with Chevrolet dealers.

His travels have taken him to most of the large cities and more than half the states.

"Demand for cars, which even before this time last year was beginning to slacken, still remains strong," said Mr. Grant.

"No one section predominates as a present or prospective market for automobiles. Sales throughout the entire country reveal a gratifying steadiness and uniformity of demand.

And improvement of the agricultural situation, particularly in the southwest where the drought has broken, indicates that thousands of former-purchasers will help sustain the demand during the latter part of the year.

"It is not improbable that demand will increase slightly in the near future and then remain unchanged for some time, still at a comparatively high level. This possibility, however, will have slight effect upon production, especially among the large companies.

PARIS GOES MOTORING

Parisians have bought new cars at the rate of 50,000 a year, in the last four years. This is an increase of 400 per cent over auto figures ten years ago.

HIGHEST PRODUCTION

April of this year showed a new high record in monthly automobile production. This was 429,373 cars and trucks. The highest month previous to this was May, 1923, when 404,450 cars and trucks were produced.

STAR COUPSTER IS LATEST CREATION TO BE ANNOUNCED

The Star Coupster, a new type of automobile that is certain because of its utilitarian features to win instant approval from car buyers, is announced by the Durant Motor company of California and has been placed on display by the Lane Auto company, local Star car dealers.

The new Star Coupster fills a definite motoring need. It is at once an open and enclosed roadster and a coupe, at the will of its owner.

Built on the same chassis made famous by standard equipment of four wheel brakes and the "Million Dollar Motor," the greatest single feature of the new model is the body, which is built by Hayes-Lunt, internationally famous coach workers.

It is finished in blue lacquer, has a grained leather top and is upholstered in Spanish gray leather. Natural finish wood wheels, and balloon tires, set off the new car admirably.

There is a large, roomy compartment under the rear deck for carrying practically any number of small articles, and which will accommodate a quantity of suitcases, bags or portfolios.

The name "Coupster," unique as a type of automobile, has been protected by government register. According to the Star officials, this name combines both coupe and roadster in its make-up.

The coupster has a low, racy appearance. Its top just beyond the one-piece windshield is just enough to make it distinctive and act, at the same time as a visor.

Somehow the fashion of the recently introduced Star coach, the coupster is an all-year car. Because of this reason alone, both are destined to reach supreme heights in demand.

The coupster may be made just as snug as the coach, because its sliding windows are well fitted.

HIGH-POWERED CAR

A new model Subbeam has been introduced to British motorists, with a rating of 120 horse power. The price of the car will be about \$5500.

TWO CONTROL FIELD

The two biggest automobile manufacturers produced 65 per cent of all automobiles put out in 1924. Of course, Ford is the first of the two, and General Motors is second.

CONGESTION WORST

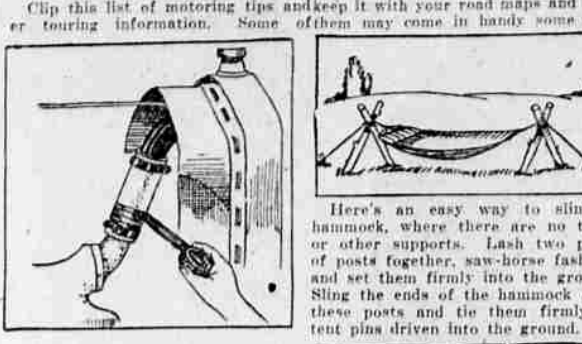
Traffic congestion was the chief cause of highway accidents in Montana, Oregon and Washington, reports the U. S. bureau of public roads, after a study of conditions there.

BARGAINS IN TIRES

Competition is so keen in India that dealers are lucky if they can sell their above cost. Most tires are sold at bazaars where small shopkeepers barter against each other for the sale of their goods.

TOURING HELPS FOR AUTOISTS

Clip this list of motoring tips and keep it with your road maps and other touring information. Some of them may come in handy some day.



Here's an easy way to sling a hammock, where there are no trees or other supports. Lash two pairs of posts together, saw-horse fashion, and set them firmly into the ground.



An easy way to wash the car is to place the sponge against the hose nozzle, turn on the water and run over the surface of the car.



The camp stove sketched here is merely a gallon varnish or paint can, with one side cut off, notches punched in the sides and ends, and holes punched into the top.

Paint the under side of your engine hood with aluminum paint. This will reduce the amount of heat coming from the engine and tending to mar the finish on the outside of the hood.

Some method of inspection will be developed, such as that recently formulated in New Jersey.

The chief criticisms against roadside markets have been that owners cover up poor goods with a few good ones, that foreign-grown produce is sold and represented as native; that there is lack of parking space which causes congestion on the highway;

That irresponsible persons locate for a short time, sell inferior goods and move on to another point.

State inspectors and issuance of licenses may eliminate these evils.

Roadside Markets Are to be Watched

(By NEA Service)
RALEIGH, N. C., June 13.—North Carolina plans to follow the example of New Jersey in banishing the evils from roadside marketing during the touring season.

WASHINGTON, June 13.—(AP)—After a period of comparative quiet, the lumber industry has taken a decided upward trend.

Figures for last week compiled by the National Lumber Manufacturers' association, show new business amounting to a 12 per cent increase over the week preceding and 35 per cent over the corresponding week of 1924.

New business has been proportionately larger than last year for several weeks and the cumulative total since the first of the year now exceeds that for the same period of last year by a full week's production.

UNCLE SAM STILL SEEKS SUBSTITUTE FOR GAS AS FUEL

WASHINGTON, June 6.—Uncle Sam is still looking for a substitute to be used as an automotive fuel when gasoline gives out.

The Federal Oil Conservation Board, of which Secretaries Hoover, Work, Weeks and Wilbur are members, has just sent out a questionnaire to automobile men seeking their opinions on possible substitutes for gasoline.

With the daily use of about 20,000,000 gallons of gasoline, the board advises these men that America's resources are rapidly diminishing.

"Could alcohol for motor fuel purposes profitably be made from grain grown for the purpose in quantities sufficient to affect the demand for gasoline?"

"What is possible total maximum production of benzol for motor fuel, assuming entire coke consumption of the United States thus involved?"

"What is relative efficiency in motor propulsion of gasoline and (a) alcohol, (b) benzol, (c) mixtures of gasoline and alcohol, (d) mixtures of gasoline and benzol?"

"What is the relative efficiency in motor propulsion of benzol for motor fuel, assuming entire coke consumption of the United States thus involved?"

"What is the relative efficiency in motor propulsion of benzol for motor fuel, assuming entire coke consumption of the United States thus involved?"

"What is the relative efficiency in motor propulsion of benzol for motor fuel, assuming entire coke consumption of the United States thus involved?"

"What is the relative efficiency in motor propulsion of benzol for motor fuel, assuming entire coke consumption of the United States thus involved?"

"What is the relative efficiency in motor propulsion of benzol for motor fuel, assuming entire coke consumption of the United States thus involved?"

"What is the relative efficiency in motor propulsion of benzol for motor fuel, assuming entire coke consumption of the United States thus involved?"

"What is the relative efficiency in motor propulsion of benzol for motor fuel, assuming entire coke consumption of the United States thus involved?"

"What is the relative efficiency in motor propulsion of benzol for motor fuel, assuming entire coke consumption of the United States thus involved?"

"What is the relative efficiency in motor propulsion of benzol for motor fuel, assuming entire coke consumption of the United States thus involved?"

"What is the relative efficiency in motor propulsion of benzol for motor fuel, assuming entire coke consumption of the United States thus involved?"

"What is the relative efficiency in motor propulsion of benzol for motor fuel, assuming entire coke consumption of the United States thus involved?"

"What is the relative efficiency in motor propulsion of benzol for motor fuel, assuming entire coke consumption of the United States thus involved?"

"What is the relative efficiency in motor propulsion of benzol for motor fuel, assuming entire coke consumption of the United States thus involved?"

Less Stock Losses May Lower Rates

(By NEA Service)
COLUMBUS, O., June 13.—Producers, feeders and shippers in Ohio have organized the Livestock Loss Prevention association to save some of the millions lost on livestock in transit.

By this saving they expect to reduce the freight rates on livestock, and thus bring more profit to themselves.

In 1923 the losses to livestock in transit amounted to \$2,776,244 in Ohio alone. These losses have been rising steadily, railroad claim agents say.

The payments of railroad companies for livestock losses are considered in fixing freight rates and charges.

Yet at least 50 per cent of all livestock losses in transit are preventable, say officials of the new organization.

More than a fourth of the losses in 1923 were traced to the responsibility of the producers, feeders and shippers. These were attributed to preventable diseases, congestion of the lungs, improper feeding and care, use of prod poles, and insufficient exercise during heavy feeding.

Losses under control of the railroads were attributed to defective equipment, rough handling, wrecks, fire and loss on water.

The local Star car dealer states that the new model will be the recipient of great approval by car buyers, because of its instant adaptability and because of great records that have followed the introduction of the "Million Dollar Motor."

FLOATLESS CARBURETOR

A new type of carburetor in England has no float nor fuel feed mechanism. The suction of the engine draws the fuel directly from the tank in back. This eliminates the vacuum tank.

SCREEN COMMERCIAL CAR

Screen Commercial Car \$910, f. o. b. Detroit. \$1055 delivered.

HATHAWAY MOTOR CO.

Eugene, Oregon



ROADSIDE MARKETS ARE TO BE WATCHED

(By NEA Service)
RALEIGH, N. C., June 13.—North Carolina plans to follow the example of New Jersey in banishing the evils from roadside marketing during the touring season.

WASHINGTON, June 13.—(AP)—After a period of comparative quiet, the lumber industry has taken a decided upward trend.

Figures for last week compiled by the National Lumber Manufacturers' association, show new business amounting to a 12 per cent increase over the week preceding and 35 per cent over the corresponding week of 1924.

New business has been proportionately larger than last year for several weeks and the cumulative total since the first of the year now exceeds that for the same period of last year by a full week's production.

LUMBER INDUSTRY ON UPWARD TREND

WASHINGTON, June 13.—(AP)—After a period of comparative quiet, the lumber industry has taken a decided upward trend.

Figures for last week compiled by the National Lumber Manufacturers' association, show new business amounting to a 12 per cent increase over the week preceding and 35 per cent over the corresponding week of 1924.

New business has been proportionately larger than last year for several weeks and the cumulative total since the first of the year now exceeds that for the same period of last year by a full week's production.

WASHINGTON, June 13.—(AP)—After a period of comparative quiet, the lumber industry has taken a decided upward trend.

Figures for last week compiled by the National Lumber Manufacturers' association, show new business amounting to a 12 per cent increase over the week preceding and 35 per cent over the corresponding week of 1924.

New business has been proportionately larger than last year for several weeks and the cumulative total since the first of the year now exceeds that for the same period of last year by a full week's production.

WASHINGTON, June 13.—(AP)—After a period of comparative quiet, the lumber industry has taken a decided upward trend.

Figures for last week compiled by the National Lumber Manufacturers' association, show new business amounting to a 12 per cent increase over the week preceding and 35 per cent over the corresponding week of 1924.

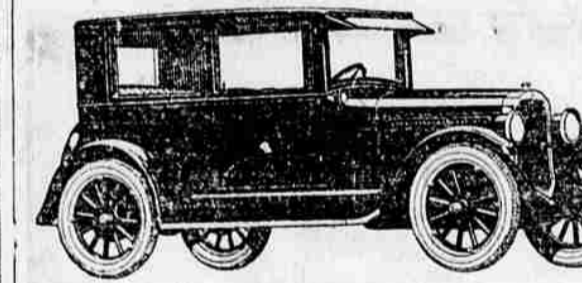
New business has been proportionately larger than last year for several weeks and the cumulative total since the first of the year now exceeds that for the same period of last year by a full week's production.

WASHINGTON, June 13.—(AP)—After a period of comparative quiet, the lumber industry has taken a decided upward trend.

Figures for last week compiled by the National Lumber Manufacturers' association, show new business amounting to a 12 per cent increase over the week preceding and 35 per cent over the corresponding week of 1924.

OLDSMOBILE Six For Rent

You Do Your Own Driving



OPEN and ENCLOSED MODELS

Screen Commercial Car \$910, f. o. b. Detroit. \$1055 delivered.

HATHAWAY MOTOR CO.

Eugene, Oregon

WASHINGTON, June 13.—(AP)—After a period of comparative quiet, the lumber industry has taken a decided upward trend.

Figures for last week compiled by the National Lumber Manufacturers' association, show new business amounting to a 12 per cent increase over the week preceding and 35 per cent over the corresponding week of 1924.

New business has been proportionately larger than last year for several weeks and the cumulative total since the first of the year now exceeds that for the same period of last year by a full week's production.

WASHINGTON, June 13.—(AP)—After a period of comparative quiet, the lumber industry has taken a decided upward trend.

Figures for last week compiled by the National Lumber Manufacturers' association, show new business amounting to a 12 per cent increase over the week preceding and 35 per cent over the corresponding week of 1924.

WASHINGTON, June 13.—(AP)—After a period of comparative quiet, the lumber industry has taken a decided upward trend.

Figures for last week compiled by the National Lumber Manufacturers' association, show new business amounting to a 12 per cent increase over the week preceding and 35 per cent over the corresponding week of 1924.

New business has been proportionately larger than last year for several weeks and the cumulative total since the first of the year now exceeds that for the same period of last year by a full week's production.

WASHINGTON, June 13.—(AP)—After a period of comparative quiet, the lumber industry has taken a decided upward trend.

Figures for last week compiled by the National Lumber Manufacturers' association, show new business amounting to a 12 per cent increase over the week preceding and 35 per cent over the corresponding week of 1924.

New business has been proportionately larger than last year for several weeks and the cumulative total since the first of the year now exceeds that for the same period of last year by a full week's production.

WASHINGTON, June 13.—(AP)—After a period of comparative quiet, the lumber industry has taken a decided upward trend.

WASHINGTON, June 13.—(AP)—After a period of comparative quiet, the lumber industry has taken a decided upward trend.

Figures for last week compiled by the National Lumber Manufacturers' association, show new business amounting to a 12 per cent increase over the week preceding and 35 per cent over the corresponding week of 1924.

New business has been proportionately larger than last year for several weeks and the cumulative total since the first of the year now exceeds that for the same period of last year by a full week's production.

WASHINGTON, June 13.—(AP)—After a period of comparative quiet, the lumber industry has taken a decided upward trend.

WASHINGTON, June 13.—(AP)—After a period of comparative quiet, the lumber industry has taken a decided upward trend.

Figures for last week compiled by the National Lumber Manufacturers' association, show new business amounting to a 12 per cent increase over the week preceding and 35 per cent over the corresponding week of 1924.

New business has been proportionately larger than last year for several weeks and the cumulative total since the first of the year now exceeds that for the same period of last year by a full week's production.

WASHINGTON, June 13.—(AP)—After a period of comparative quiet, the lumber industry has taken a decided upward trend.

Figures for last week compiled by the National Lumber Manufacturers' association, show new business amounting to a 12 per cent increase over the week preceding and 35 per cent over the corresponding week of 1924.

New business has been proportionately larger than last year for several weeks and the cumulative total since the first of the year now exceeds that for the same period of last year by a full week's production.

WASHINGTON, June 13.—(AP)—After a period of comparative quiet, the lumber industry has taken a decided upward trend.

WASHINGTON, June 13.—(AP)—After a period of comparative quiet, the lumber industry has taken a decided upward trend.

Figures for last week compiled by the National Lumber Manufacturers' association, show new business amounting to a 12 per cent increase over the week preceding and 35 per cent over the corresponding week of 1924.

New business has been proportionately larger than last year for several weeks and the cumulative total since the first of the year now exceeds that for the same period of last year by a full week's production.

WASHINGTON, June 13.—(AP)—After a period of comparative quiet, the lumber industry has taken a decided upward trend.

Figures for last week compiled by the National Lumber Manufacturers' association, show new business amounting to a 12 per cent increase over the week preceding and 35 per cent over the corresponding week of 1924.

New business has been proportionately larger than last year for several weeks and the cumulative total since the first of the year now exceeds that for the same period of last year by a full week's production.

WASHINGTON, June 13.—(AP)—After a period of comparative quiet, the lumber industry has taken a decided upward trend.

Figures for last week compiled by the National Lumber Manufacturers' association, show new business amounting to a 12 per cent increase over the week preceding and 35 per cent over the corresponding week of 1924.

New business has been proportionately larger than last year for several weeks and the cumulative total since the first of the year now exceeds that for the same period of last year by a full week's production.

WASHINGTON, June 13.—(AP)—After a period of comparative quiet, the lumber industry has taken a decided upward trend.

Figures for last week compiled by the National Lumber Manufacturers' association, show new business amounting to a 12 per cent increase over the week preceding and 35 per cent over the corresponding week of 1924.

New business has been proportionately larger than last year for several weeks and the cumulative total since the first of the year now exceeds that for the same period of last year by a full week's production.

WASHINGTON, June 13.—(AP)—After a period of comparative quiet, the lumber industry has taken a decided upward trend.

WASHINGTON, June 13.—(AP)—After a period of comparative quiet, the lumber industry has taken a decided upward trend.

Figures for last week compiled by the National Lumber Manufacturers' association, show new business amounting to a 12 per cent increase over the week preceding and 35 per cent over the corresponding week of 1924.

New business has been proportionately larger than last year for several weeks and the cumulative total since the first of the year now exceeds that for the same period of last year by a full week's production.

WASHINGTON, June 13.—(AP)—After a period of comparative quiet, the lumber industry has taken a decided upward trend.

Figures for last week compiled by the National Lumber Manufacturers' association, show new business amounting to a 12 per cent increase over the week preceding and 35 per cent over the corresponding week of 1924.

New business has been proportionately larger than last year for several weeks and the cumulative total since the first of the year now exceeds that for the same period of last year by a full week's production.

WASHINGTON, June 13.—(AP)—After a period of comparative quiet, the lumber industry has taken a decided upward trend.

WASHINGTON, June 13.—(AP)—After a period of comparative quiet, the lumber industry has taken a decided upward trend.

Figures for last week compiled by the National Lumber Manufacturers' association, show new business amounting to a 12 per cent increase over the week preceding and 35 per cent over the corresponding week of 1924.

New business has been proportionately larger than last year for several weeks and the cumulative total since the first of the year now exceeds that for the same period of last year by a full week's production.

WASHINGTON, June 13.—(AP)—After a period of comparative quiet, the lumber industry has taken a decided upward trend.

Figures for last week compiled by the National Lumber Manufacturers' association, show new business amounting to a 12 per cent increase over the week preceding and 35 per cent over the corresponding week of 1924.

New business has been proportionately larger than last year for several weeks and the cumulative total since the first of the year now exceeds that for the same period of last year by a full week's production.

WASHINGTON, June 13.—(AP)—After a period of comparative quiet, the lumber industry has taken a decided upward trend.

WASHINGTON, June 13.—(AP)—After a period of comparative quiet, the lumber industry has taken a decided upward trend.

Figures for last week compiled by the National Lumber Manufacturers' association, show new business amounting to a 12 per cent increase over the week preceding and 35 per cent over the corresponding week of 1924.

New business has been proportionately larger than last year for several weeks and the cumulative total since the first of the year now exceeds that for the same period of last year by a full week's production.

WASHINGTON, June 13.—(AP)—After a period of comparative quiet, the lumber industry has taken a decided upward trend.

Figures for last week compiled by the National Lumber Manufacturers' association, show new business amounting to a 12 per cent increase over the week preceding and 35 per cent over the corresponding week of 1924.

New business has been proportionately larger than last year for several weeks and the cumulative total since the first of the year now exceeds that for the same period of last year by a full week's production.

WASHINGTON, June 13.—(AP)—After a period of comparative quiet, the lumber industry has taken a decided upward trend.

<