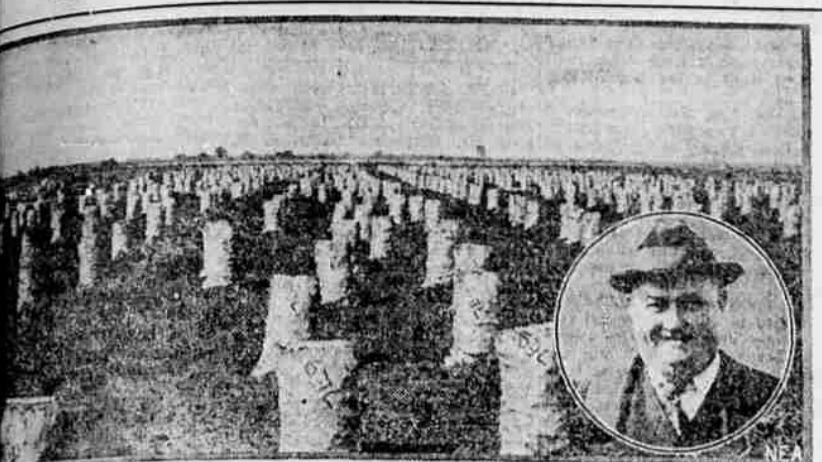


### POTATO PRODUCING RECORD OF WORLD IS CLAIMED

San Joaquin County, California, Lays Out Challenge to World in General to Beat Her Record; a Few Pointers Are Given Out by the Growers



Frederick H. Rindge, Inset, and part of his farm showing his potato harvest.

The marked return to favor of mill construction for factories and warehouses is accounted for by the facts regarding such construction. These are summed up in the sixth chapter of the National Lumber Manufacturers Association's notable fire prevention series, which is a part of the cumulative work on "Lumber and Its Utilization," the technical classic on this subject.

The demand for mill construction has occasioned a widespread desire among architects, engineers, industrial executives, building officials, contractors and others, for complete and authoritative information on the subject.

Accordingly the engineers and architects of the National Lumber Manufacturers Association have made a careful study from which results the present chapter on "Fire Safe Industrial Buildings" and the following one on "Details of Heavy Timber Construction." The former is now ready for distribution in booklet form. It is being sent to all persons who have applied for the previous chapters of "Lumber and Its Utilization" as well as to certain professional lists.

A copy will be forwarded gratis, on application, to manufacturing companies, interested professional men and industrial executives. It is in no sense an advertising publication but is purely technical and educational.

The booklet points out modern heavy timber construction is "a new type which has only recently reached its present high state of development." For that reason many industrial executives, architects and engineers have not realized that it may supply precisely the type of industrial construction to meet their particular requirements. Among the advantages claimed for heavy timber construction are: Economy of fixed investment, rapidity of building, independence during erection or seasonal weather conditions, slow burning or fire resistance quality.

Other advantages claimed for mill or heavy timber, slow burning construction are:

1. It is peculiarly adaptable to changes.
2. It offers more convenient surfaces for the attachment of machinery, shafting and pulleys.
3. It encourages improvements in operation because it does not require expenditures for changes which exceed in value the expected benefits.
4. Automatic sprinkler equipment is easily adjusted and economically maintained.
5. The floors have a resiliency that makes faster machine operation possible without the damaging effect of impacts ruining the machines.
6. Overloaded floors are easily discernable and the load may be redistributed before rupture, takes place allowing structural members to spring back to normal position.

area of delta land within its boundaries. The area is divided into tracts, thousands of acres in each, which are devoted to the production of such crops as corn, beans, potatoes, celery and asparagus.

**Good Farming**

Frederick H. Rindge, owner of a 7000-acre tract, or "island," as the delta tracts are called, set out this year to get an authenticated record on potato production. He planted some 1500 acres to potatoes as usual and from this selected 100 acres for official tests.

Here are the factors which entered into his producing the record-breaking crop: (1) Sterilization of soil by burning. (2) Rotation of crops as regular practice. (3) Careful selection of seed. (4) Heavy planting. (5) Careful attention to irrigation and drainage. (6) Clean and frequent cultivation. (7) Heavy fertilization. (8) Deep plowing.

**Tops British Mark**

Rindge planted approximately 18 sacks of seed potatoes to the acre.

It cost him \$50 an acre for fertilizer. He used one ton of 0-21-21 to the acre. This concentrated fertilizer is declared by experts to be the strongest ever used in the delta. The nature of the soil eliminated the necessity for nitrogen in the formula, potash and phosphate being the elements used.

The British government, according to cable advices received by San Francisco, once officially recorded a potato yield of 53,700 pounds. As far as could be learned this was the world record and it was at this record that Rindge aimed.

California and Maine alone, of all the potato-producing centers in the United States, had approached the British record. The former California record of 603 bushels to an acre was made in Nevada county, while Maine claimed a record of 700 bushels.

Worthy of special note was the fact that the new records were made with Burbank potatoes.

Frederick H. Rindge, owner of a 7000-acre tract, or "island," as the delta tracts are called, set out this year to get an authenticated record on potato production. He planted some 1500 acres to potatoes as usual and from this selected 100 acres for official tests.

Here are the factors which entered into his producing the record-breaking crop: (1) Sterilization of soil by burning. (2) Rotation of crops as regular practice. (3) Careful selection of seed. (4) Heavy planting. (5) Careful attention to irrigation and drainage. (6) Clean and frequent cultivation. (7) Heavy fertilization. (8) Deep plowing.

**Tops British Mark**

Rindge planted approximately 18 sacks of seed potatoes to the acre.

Frederick H. Rindge, owner of a 7000-acre tract, or "island," as the delta tracts are called, set out this year to get an authenticated record on potato production. He planted some 1500 acres to potatoes as usual and from this selected 100 acres for official tests.

Here are the factors which entered into his producing the record-breaking crop: (1) Sterilization of soil by burning. (2) Rotation of crops as regular practice. (3) Careful selection of seed. (4) Heavy planting. (5) Careful attention to irrigation and drainage. (6) Clean and frequent cultivation. (7) Heavy fertilization. (8) Deep plowing.

**Tops British Mark**

Rindge planted approximately 18 sacks of seed potatoes to the acre.

Frederick H. Rindge, owner of a 7000-acre tract, or "island," as the delta tracts are called, set out this year to get an authenticated record on potato production. He planted some 1500 acres to potatoes as usual and from this selected 100 acres for official tests.

Here are the factors which entered into his producing the record-breaking crop: (1) Sterilization of soil by burning. (2) Rotation of crops as regular practice. (3) Careful selection of seed. (4) Heavy planting. (5) Careful attention to irrigation and drainage. (6) Clean and frequent cultivation. (7) Heavy fertilization. (8) Deep plowing.

**Tops British Mark**

Rindge planted approximately 18 sacks of seed potatoes to the acre.

Frederick H. Rindge, owner of a 7000-acre tract, or "island," as the delta tracts are called, set out this year to get an authenticated record on potato production. He planted some 1500 acres to potatoes as usual and from this selected 100 acres for official tests.

Here are the factors which entered into his producing the record-breaking crop: (1) Sterilization of soil by burning. (2) Rotation of crops as regular practice. (3) Careful selection of seed. (4) Heavy planting. (5) Careful attention to irrigation and drainage. (6) Clean and frequent cultivation. (7) Heavy fertilization. (8) Deep plowing.

**Tops British Mark**

Rindge planted approximately 18 sacks of seed potatoes to the acre.

Frederick H. Rindge, owner of a 7000-acre tract, or "island," as the delta tracts are called, set out this year to get an authenticated record on potato production. He planted some 1500 acres to potatoes as usual and from this selected 100 acres for official tests.

Here are the factors which entered into his producing the record-breaking crop: (1) Sterilization of soil by burning. (2) Rotation of crops as regular practice. (3) Careful selection of seed. (4) Heavy planting. (5) Careful attention to irrigation and drainage. (6) Clean and frequent cultivation. (7) Heavy fertilization. (8) Deep plowing.

**Tops British Mark**

Rindge planted approximately 18 sacks of seed potatoes to the acre.

Frederick H. Rindge, owner of a 7000-acre tract, or "island," as the delta tracts are called, set out this year to get an authenticated record on potato production. He planted some 1500 acres to potatoes as usual and from this selected 100 acres for official tests.

Here are the factors which entered into his producing the record-breaking crop: (1) Sterilization of soil by burning. (2) Rotation of crops as regular practice. (3) Careful selection of seed. (4) Heavy planting. (5) Careful attention to irrigation and drainage. (6) Clean and frequent cultivation. (7) Heavy fertilization. (8) Deep plowing.

**Tops British Mark**

Rindge planted approximately 18 sacks of seed potatoes to the acre.

Frederick H. Rindge, owner of a 7000-acre tract, or "island," as the delta tracts are called, set out this year to get an authenticated record on potato production. He planted some 1500 acres to potatoes as usual and from this selected 100 acres for official tests.

Here are the factors which entered into his producing the record-breaking crop: (1) Sterilization of soil by burning. (2) Rotation of crops as regular practice. (3) Careful selection of seed. (4) Heavy planting. (5) Careful attention to irrigation and drainage. (6) Clean and frequent cultivation. (7) Heavy fertilization. (8) Deep plowing.

**Tops British Mark**

Rindge planted approximately 18 sacks of seed potatoes to the acre.

Frederick H. Rindge, owner of a 7000-acre tract, or "island," as the delta tracts are called, set out this year to get an authenticated record on potato production. He planted some 1500 acres to potatoes as usual and from this selected 100 acres for official tests.

Here are the factors which entered into his producing the record-breaking crop: (1) Sterilization of soil by burning. (2) Rotation of crops as regular practice. (3) Careful selection of seed. (4) Heavy planting. (5) Careful attention to irrigation and drainage. (6) Clean and frequent cultivation. (7) Heavy fertilization. (8) Deep plowing.

**Tops British Mark**

Rindge planted approximately 18 sacks of seed potatoes to the acre.

Frederick H. Rindge, owner of a 7000-acre tract, or "island," as the delta tracts are called, set out this year to get an authenticated record on potato production. He planted some 1500 acres to potatoes as usual and from this selected 100 acres for official tests.

Here are the factors which entered into his producing the record-breaking crop: (1) Sterilization of soil by burning. (2) Rotation of crops as regular practice. (3) Careful selection of seed. (4) Heavy planting. (5) Careful attention to irrigation and drainage. (6) Clean and frequent cultivation. (7) Heavy fertilization. (8) Deep plowing.

**Tops British Mark**

Rindge planted approximately 18 sacks of seed potatoes to the acre.

Frederick H. Rindge, owner of a 7000-acre tract, or "island," as the delta tracts are called, set out this year to get an authenticated record on potato production. He planted some 1500 acres to potatoes as usual and from this selected 100 acres for official tests.

Here are the factors which entered into his producing the record-breaking crop: (1) Sterilization of soil by burning. (2) Rotation of crops as regular practice. (3) Careful selection of seed. (4) Heavy planting. (5) Careful attention to irrigation and drainage. (6) Clean and frequent cultivation. (7) Heavy fertilization. (8) Deep plowing.

**Tops British Mark**

Rindge planted approximately 18 sacks of seed potatoes to the acre.

Frederick H. Rindge, owner of a 7000-acre tract, or "island," as the delta tracts are called, set out this year to get an authenticated record on potato production. He planted some 1500 acres to potatoes as usual and from this selected 100 acres for official tests.

Here are the factors which entered into his producing the record-breaking crop: (1) Sterilization of soil by burning. (2) Rotation of crops as regular practice. (3) Careful selection of seed. (4) Heavy planting. (5) Careful attention to irrigation and drainage. (6) Clean and frequent cultivation. (7) Heavy fertilization. (8) Deep plowing.

**Tops British Mark**

Rindge planted approximately 18 sacks of seed potatoes to the acre.

### INCREASES IN MILL CONSTRUCTION FOR WAREHOUSES TOLD

The marked return to favor of mill construction for factories and warehouses is accounted for by the facts regarding such construction. These are summed up in the sixth chapter of the National Lumber Manufacturers Association's notable fire prevention series, which is a part of the cumulative work on "Lumber and Its Utilization," the technical classic on this subject.

The demand for mill construction has occasioned a widespread desire among architects, engineers, industrial executives, building officials, contractors and others, for complete and authoritative information on the subject.

Accordingly the engineers and architects of the National Lumber Manufacturers Association have made a careful study from which results the present chapter on "Fire Safe Industrial Buildings" and the following one on "Details of Heavy Timber Construction." The former is now ready for distribution in booklet form. It is being sent to all persons who have applied for the previous chapters of "Lumber and Its Utilization" as well as to certain professional lists.

A copy will be forwarded gratis, on application, to manufacturing companies, interested professional men and industrial executives. It is in no sense an advertising publication but is purely technical and educational.

The booklet points out modern heavy timber construction is "a new type which has only recently reached its present high state of development." For that reason many industrial executives, architects and engineers have not realized that it may supply precisely the type of industrial construction to meet their particular requirements. Among the advantages claimed for heavy timber construction are: Economy of fixed investment, rapidity of building, independence during erection or seasonal weather conditions, slow burning or fire resistance quality.

Other advantages claimed for mill or heavy timber, slow burning construction are:

1. It is peculiarly adaptable to changes.
2. It offers more convenient surfaces for the attachment of machinery, shafting and pulleys.
3. It encourages improvements in operation because it does not require expenditures for changes which exceed in value the expected benefits.
4. Automatic sprinkler equipment is easily adjusted and economically maintained.
5. The floors have a resiliency that makes faster machine operation possible without the damaging effect of impacts ruining the machines.
6. Overloaded floors are easily discernable and the load may be redistributed before rupture, takes place allowing structural members to spring back to normal position.

area of delta land within its boundaries. The area is divided into tracts, thousands of acres in each, which are devoted to the production of such crops as corn, beans, potatoes, celery and asparagus.

**Good Farming**

Frederick H. Rindge, owner of a 7000-acre tract, or "island," as the delta tracts are called, set out this year to get an authenticated record on potato production. He planted some 1500 acres to potatoes as usual and from this selected 100 acres for official tests.

Here are the factors which entered into his producing the record-breaking crop: (1) Sterilization of soil by burning. (2) Rotation of crops as regular practice. (3) Careful selection of seed. (4) Heavy planting. (5) Careful attention to irrigation and drainage. (6) Clean and frequent cultivation. (7) Heavy fertilization. (8) Deep plowing.

**Tops British Mark**

Rindge planted approximately 18 sacks of seed potatoes to the acre.

Frederick H. Rindge, owner of a 7000-acre tract, or "island," as the delta tracts are called, set out this year to get an authenticated record on potato production. He planted some 1500 acres to potatoes as usual and from this selected 100 acres for official tests.

Here are the factors which entered into his producing the record-breaking crop: (1) Sterilization of soil by burning. (2) Rotation of crops as regular practice. (3) Careful selection of seed. (4) Heavy planting. (5) Careful attention to irrigation and drainage. (6) Clean and frequent cultivation. (7) Heavy fertilization. (8) Deep plowing.

**Tops British Mark**

Rindge planted approximately 18 sacks of seed potatoes to the acre.

Frederick H. Rindge, owner of a 7000-acre tract, or "island," as the delta tracts are called, set out this year to get an authenticated record on potato production. He planted some 1500 acres to potatoes as usual and from this selected 100 acres for official tests.

Here are the factors which entered into his producing the record-breaking crop: (1) Sterilization of soil by burning. (2) Rotation of crops as regular practice. (3) Careful selection of seed. (4) Heavy planting. (5) Careful attention to irrigation and drainage. (6) Clean and frequent cultivation. (7) Heavy fertilization. (8) Deep plowing.

**Tops British Mark**

Rindge planted approximately 18 sacks of seed potatoes to the acre.

Frederick H. Rindge, owner of a 7000-acre tract, or "island," as the delta tracts are called, set out this year to get an authenticated record on potato production. He planted some 1500 acres to potatoes as usual and from this selected 100 acres for official tests.

Here are the factors which entered into his producing the record-breaking crop: (1) Sterilization of soil by burning. (2) Rotation of crops as regular practice. (3) Careful selection of seed. (4) Heavy planting. (5) Careful attention to irrigation and drainage. (6) Clean and frequent cultivation. (7) Heavy fertilization. (8) Deep plowing.

**Tops British Mark**

Rindge planted approximately 18 sacks of seed potatoes to the acre.

Frederick H. Rindge, owner of a 7000-acre tract, or "island," as the delta tracts are called, set out this year to get an authenticated record on potato production. He planted some 1500 acres to potatoes as usual and from this selected 100 acres for official tests.

Here are the factors which entered into his producing the record-breaking crop: (1) Sterilization of soil by burning. (2) Rotation of crops as regular practice. (3) Careful selection of seed. (4) Heavy planting. (5) Careful attention to irrigation and drainage. (6) Clean and frequent cultivation. (7) Heavy fertilization. (8) Deep plowing.

**Tops British Mark**

Rindge planted approximately 18 sacks of seed potatoes to the acre.

Frederick H. Rindge, owner of a 7000-acre tract, or "island," as the delta tracts are called, set out this year to get an authenticated record on potato production. He planted some 1500 acres to potatoes as usual and from this selected 100 acres for official tests.

Here are the factors which entered into his producing the record-breaking crop: (1) Sterilization of soil by burning. (2) Rotation of crops as regular practice. (3) Careful selection of seed. (4) Heavy planting. (5) Careful attention to irrigation and drainage. (6) Clean and frequent cultivation. (7) Heavy fertilization. (8) Deep plowing.

**Tops British Mark**

Rindge planted approximately 18 sacks of seed potatoes to the acre.

Frederick H. Rindge, owner of a 7000-acre tract, or "island," as the delta tracts are called, set out this year to get an authenticated record on potato production. He planted some 1500 acres to potatoes as usual and from this selected 100 acres for official tests.

Here are the factors which entered into his producing the record-breaking crop: (1) Sterilization of soil by burning. (2) Rotation of crops as regular practice. (3) Careful selection of seed. (4) Heavy planting. (5) Careful attention to irrigation and drainage. (6) Clean and frequent cultivation. (7) Heavy fertilization. (8) Deep plowing.

**Tops British Mark**

Rindge planted approximately 18 sacks of seed potatoes to the acre.

Frederick H. Rindge, owner of a 7000-acre tract, or "island," as the delta tracts are called, set out this year to get an authenticated record on potato production. He planted some 1500 acres to potatoes as usual and from this selected 100 acres for official tests.

Here are the factors which entered into his producing the record-breaking crop: (1) Sterilization of soil by burning. (2) Rotation of crops as regular practice. (3) Careful selection of seed. (4) Heavy planting. (5) Careful attention to irrigation and drainage. (6) Clean and frequent cultivation. (7) Heavy fertilization. (8) Deep plowing.

**Tops British Mark**

Rindge planted approximately 18 sacks of seed potatoes to the acre.

Frederick H. Rindge, owner of a 7000-acre tract, or "island," as the delta tracts are called, set out this year to get an authenticated record on potato production. He planted some 1500 acres to potatoes as usual and from this selected 100 acres for official tests.

Here are the factors which entered into his producing the record-breaking crop: (1) Sterilization of soil by burning. (2) Rotation of crops as regular practice. (3) Careful selection of seed. (4) Heavy planting. (5) Careful attention to irrigation and drainage. (6) Clean and frequent cultivation. (7) Heavy fertilization. (8) Deep plowing.

**Tops British Mark**

Rindge planted approximately 18 sacks of seed potatoes to the acre.

Frederick H. Rindge, owner of a 7000-acre tract, or "island," as the delta tracts are called, set out this year to get an authenticated record on potato production. He planted some 1500 acres to potatoes as usual and from this selected 100 acres for official tests.

Here are the factors which entered into his producing the record-breaking crop: (1) Sterilization of soil by burning. (2) Rotation of crops as regular practice. (3) Careful selection of seed. (4) Heavy planting. (5) Careful attention to irrigation and drainage. (6) Clean and frequent cultivation. (7) Heavy fertilization. (8) Deep plowing.

**Tops British Mark**

Rindge planted approximately 18 sacks of seed potatoes to the acre.

Frederick H. Rindge, owner of a 7000-acre tract, or "island," as the delta tracts are called, set out this year to get an authenticated record on potato production. He planted some 1500 acres to potatoes as usual and from this selected 100 acres for official tests.

Here are the factors which entered into his producing the record-breaking crop: (1) Sterilization of soil by burning. (2) Rotation of crops as regular practice. (3) Careful selection of seed. (4) Heavy planting. (5) Careful attention to irrigation and drainage. (6) Clean and frequent cultivation. (7) Heavy fertilization. (8) Deep plowing.

**Tops British Mark**

Rindge planted approximately 18 sacks of seed potatoes to the acre.

Frederick H. Rindge, owner of a 7000-acre tract, or "island," as the delta tracts are called, set out this year to get an authenticated record on potato production. He planted some 1500 acres to potatoes as usual and from this selected 100 acres for official tests.

Here are the factors which entered into his producing the record-breaking crop: (1) Sterilization of soil by burning. (2) Rotation of crops as regular practice. (3) Careful selection of seed. (4) Heavy planting. (5) Careful attention to irrigation and drainage. (6) Clean and frequent cultivation. (7) Heavy fertilization. (8) Deep plowing.

**Tops British Mark**

Rindge planted approximately 18 sacks of seed potatoes to the acre.

Frederick H. Rindge, owner of a 7000-acre tract, or "island," as the delta tracts are called, set out this year to get an authenticated record on potato production. He planted some 1500 acres to potatoes as usual and from this selected 100 acres for official tests.

Here are the factors which entered into his producing the record-breaking crop: (1) Sterilization of soil by burning. (2) Rotation of crops as regular practice. (3) Careful selection of seed. (4) Heavy planting. (5) Careful attention to irrigation and drainage. (6) Clean and frequent cultivation. (7) Heavy fertilization. (8) Deep plowing.

**Tops British Mark**

Rindge planted approximately 18 sacks of seed potatoes to the acre.

Frederick H. Rindge, owner of a 7000-acre tract, or "island," as the delta tracts are called, set out this year to get an authenticated record on potato production. He planted some 1500 acres to potatoes as usual and from this selected 100 acres for official tests.

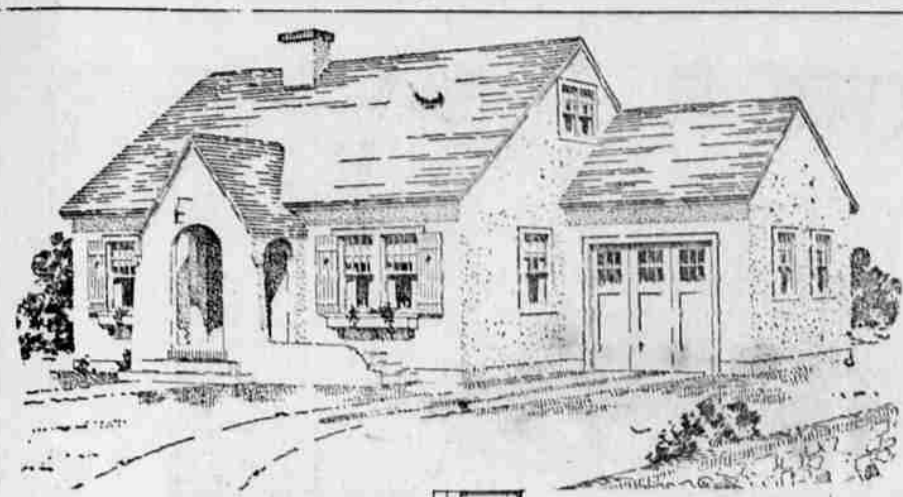
Here are the factors which entered into his producing the record-breaking crop: (1) Sterilization of soil by burning. (2) Rotation of crops as regular practice. (3) Careful selection of seed. (4) Heavy planting. (5) Careful attention to irrigation and drainage. (6) Clean and frequent cultivation. (7) Heavy fertilization. (8) Deep plowing.

**Tops British Mark**

Rindge planted approximately 18 sacks of seed potatoes to the acre.

### THIS FOUR - ROOM HOUSE IS OF AN UNUSUAL DESIGN

Expression of Individuality is Strong Attraction of Little Home; Floor Plan is Well Ordered, and Allows for Changes if Better Ideas are Held by Owner



Expression of individuality is the soul of design in home building. The well ordered floor plan betrays keen sense of order in the mind of the builder. Lack of standardization lends courage to art.

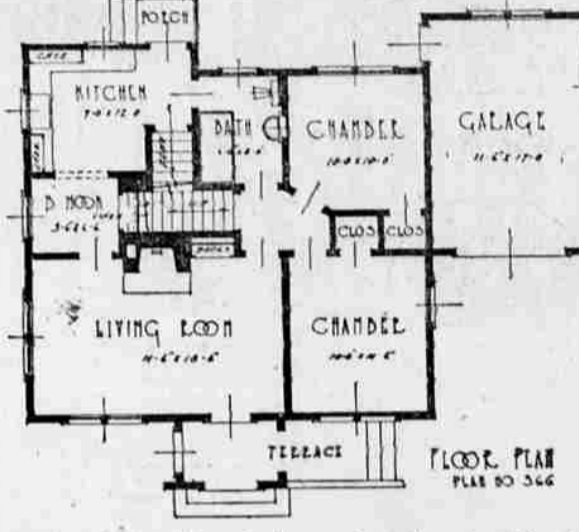
And so, if you don't like the layout of the rooms shown in the floor plan submitted by the architect, you should feel at liberty to suggest changes. You must live in the house, and the architect escapes even the memory of his errors.

This four-room ground floor adapts itself readily to certain modifications. The garage may be moved away from the side of the bedroom without much trouble, if you don't want it there, and windows may be built into the blank wall.

The back bedroom could be enlarged and the bathroom as well, without violating the ethics of laudable structural purposes. Left as it is the house would find favor with many small families.

The kitchen is of ample size and the breakfast nook is conveniently placed. There is plenty of wall space in the living room and the fireplace helps make it cozy.

The bedroom at the front of the house looks out upon a terrace that could be made attractive and the square feet. Two sets of blueprints bathroom is convenient to all part and specifications will be furnished at the cost of the dwelling. nominal cost on application at Walter Floor area of this house is 808 Bushong Lumber Co.



FLOOR PLAN PLAN NO 346

could be made attractive and the square feet. Two sets of blueprints bathroom is convenient to all part and specifications will be furnished at the cost of the dwelling. nominal cost on application at Walter Floor area of this house is 808 Bushong Lumber Co.

REALTORS TO HEAR VOCATION ADDRESS

A national conference on education for the vocation of real estate will be held at Detroit June 24. The conference, in which educators and real estate leaders of the United States and Canada will take part, is called by the joint commission on real estate education, made up of representatives of the American Association of Collegiate Schools of Business, the United Y. M. C. A., schools, the Institute for Research in Land Economics and Public Utilities and the National Association of Real Estate Boards.

The conference will be held in connection with the annual convention of the National Association of Real Estate Boards, which is to meet in Detroit June 23-26 inclusive. Dean Edmund E. Day, of the University of Michigan, will preside.

The more than 40 colleges and universities now offering courses in real estate will be asked to send representatives to the conference. Instructors in real estate courses now being given under the auspices of local real estate boards in 185 cities of the United States and Canada will also be invited to participate.

The objects of the conference will be to discuss the content of educational courses in real estate and the best methods of presenting these courses.

Dr. Richard T. Ely, of the University of Wisconsin, leading authority in the country on land economics, and director of the Institute for Research in Land Economics and Public Utilities, will address the conference on "Real Estate Education and the Future." T. H. Nelson, assistant executive secretary of the United Y. M. C. A. schools, dozens of which have opened courses in real estate in the last two years, will propose a standard test in real estate. The test is being worked out by him in connection with the National Association of Real Estate Boards.

ABOUT LANE COUNTY Series No. 5

The value of all of the domestic animals of Lane county in 1920 aggregated the sum of \$2,847,526. Beef cattle, horses, sheep and dairy cows accounted for the larger portion of this valuation.

Lane county had a total of 17,433 dairy cows. Not enough dairy cows for a county so well adapted to dairying, we would say.

This bank has always been ready and willing to finance more and better live stock. We have assisted at all times in the development of the live stock industry, especially dairying. Submit your live stock financing problems to us.

WE HAVE For Sale 3 Second Hand Water Closets 2 Second Hand Sinks In Good Condition at a Bargain WILLIAMSON & CO. 153 East 10th Phone 536

McCormick-Deering

The most popular and easiest running cream separator in the world can be purchased from us on a time payment plan on terms suitable to your convenience. Call or phone us for a demonstration.

Bank of Commerce Eugene, Oregon

PHONE FOR FOOD GROCER'S SLOGAN

More than 300 wholesale grocers' salesmen held a mass meeting recently at the Mercantile Exchange, New York City, at which a "Phone-for-Food" campaign among retail grocers was launched.

It was pointed out that a live retailer could reduce his cost of doing business as much as 8 per cent through a more intelligent use of the telephone. The sales promotion committee of the National Wholesale Grocers' Association has been making some interesting tests which disclose the fact that the average grocer has never realized the power and value of using the telephone as a medium between the grocer and his customer. One test showed that by selling wholly across the counter a small store averaged daily sales of \$89, divided between 131 counter sales, which averaged 53 cents per sale, and 2.8 articles per sale. The same store under the "Phone-for-Food" movement had sales of \$221 per day from 25 telephone calls, sales averaging \$1.32 per call, selling five articles each. In other words, the business was increased threefold and at a material reduction of cost per sale.

Yokohama now has more school children than before the earthquake, although a census last fall revealed the population was 75,000 less.

At Your Service LUMBER AND BUILDING MATERIALS Walters-Bushong Lumber Co. 4th and Pearl Phone 500

At Your Service LUMBER AND BUILDING MATERIALS Walters-Bushong Lumber Co. 4th and Pearl Phone 500

At Your Service LUMBER AND BUILDING MATERIALS Walters-Bushong Lumber Co. 4th and Pearl Phone 500

At Your Service LUMBER AND BUILDING MATERIALS Walters-Bushong Lumber Co. 4th and Pearl Phone 500

### HOME LAWN PLANS FOR SUMMER TOLD

Everybody has a lawn, but very few people have good ones. Now is a good time to start a real one.

The first requisite is good seed, seed from a reliable seed house that will contain good perennial grasses which will take hold and make a velvety surface to increase in beauty with each year. Much of the difficulty with lawns may be traced to poor, cheap seed which contains a large proportion of annual grasses which will make a fine show the first year and then will leave a thin and bedraggled stand of perennial grasses which will need to grow for some time to cover the bare spots where the annual grasses have died out.

Lawn seed is now prepared and mixed to suit various soils and situations and a description of the character of your yard will bring you the proper mixture for best results. Many seed houses will mix you a grass prescription if you ask them.

There are grass seed mixtures for shady lawns, for sunny lawns, for light soil, for heavy soil, for sweet soil, for sour soil, seed that will give more than hard usage, and for every purpose and situation likely to arise. It is a matter of consulting a catalogue or a dealer of recognized standing to get the right sort of seed.

A lawn is a garden for grass. The soil needs fertilizing just as much if not more than the garden proper, for it must support a heavier and denser plant life. Fertilize the lawn. Use pulverized sheep manure, shredded cow manure, nitrate of soda or the balanced commercial lawn fertilizers.

There will be bare spots this spring owing to the coating of ice which covered such a large part of the country. Be ready to seed these spots as soon as the ice has melted.

Roll the lawn as soon as frost is well out of the ground.

There will be bare spots this spring owing to the coating of ice which covered such a large part of the country. Be ready to seed these spots as soon as the ice has melted.

Roll the lawn as soon as frost is well out of the ground.

PANTS Cut and made specially for you any style or grade in our own shop. Guaranteed to fit. LISTON MFG. CO. 719 Olive Elys Bldg.

Hall's Catarrh Medicine will do what you need. It is a medicine of recognized standing to get the right sort of seed. A lawn is a garden for grass. The soil needs fertilizing just as much if not more than the garden proper, for it must support a heavier and denser plant life. Fertilize the lawn. Use pulverized sheep manure, shredded cow manure, nitrate of soda or the balanced commercial lawn fertilizers. There will be bare spots this spring owing to the coating of ice which covered such a large part of the country. Be ready to seed these spots as soon as the ice has melted. Roll the lawn as soon as frost is well out of the ground.

Parks Warehouse & Storage Company CEMENT 4th and Pearl Sts. Phone 822-J WE DELIVER

Let Gas be the Finishing Touch That Will Assure Your Home Comfort.

Of course the new home will be piped for gas! It's almost as essential for comfort and convenience as doors and windows and a roof.

If you're building this summer, notify us now. Or if you intend to have "the old nest" made modern and up-to-date with Gas Service, let us know. Call at our office and let us demonstrate new Vulcan Smooth Top Gas Range.

Free estimates on any installation—new house or old. Just phone 28, or come into the office.

Mountain States Power Co. 881 Oak Street Phone 28

Twin Oaks Lumber Co. FIR AND CEDAR LUMBER SHINGLES LATH HARDWOOD FLOORS Phone 782 669 High St.

At Your Service LUMBER AND BUILDING MATERIALS Walters-Bushong Lumber Co. 4th and Pearl Phone 500

At Your Service LUMBER AND BUILDING MATERIALS Walters-Bushong Lumber Co. 4th and Pearl Phone 500

At Your Service LUMBER AND BUILDING MATERIALS Walters-Bushong Lumber Co. 4th and Pearl Phone 500

At Your Service LUMBER AND BUILDING MATERIALS Walters-Bushong Lumber Co. 4th and Pearl Phone 500

At Your Service LUMBER AND BUILDING MATERIALS Walters-Bushong Lumber Co. 4th and Pearl Phone 500

At Your Service LUMBER AND BUILDING MATERIALS Walters-Bushong Lumber Co. 4th and Pearl Phone 500

At Your Service LUMBER AND BUILDING MATERIALS Walters-Bushong Lumber Co. 4th and Pearl Phone 500

FARM OUTLOOK IN OREGON REVIEWED

The agricultural outlook in production and marketing of farm commodities has been outlined for Oregon farmers by the extension service of the agricultural college under the direction of R. S. Besse, farm management specialist. Total production, consumption and exportable surplus have a direct bearing on the farm program. Tendencies are noted but no attempt has been made to make prophecies—rather an endeavor to give the farmer facts that will reduce the "gambling element" in the business.

Indications are for slightly reduced potato acreage in Oregon. Reports from several counties show a decrease while Umatilla, Josephine, and Crook counties report increased acreage. Reports from Yakima indicate that considerable frozen out alfalfa ground will be needed to potatoes, materially increasing their acreage. The 1924 yield reports from several Oregon counties gave a range of from 10 to 600 bushels per acre. Most reports indicate greater emphasis on seed improvement, and better methods, whereby growers are reducing costs of production.

The 1924 U. S. acreage was smaller, but increased yield per acre gave enormous production and very low prices. Indications are that fewer acres will produce sufficient for domestic demands. A larger portion of potatoes is being grown in especially adapted areas where acreage yields are larger and by men equipped with cultivating, spraying, digging and grading machinery. Federal reports indicate a reduction of 4 per cent in intended plantings.

Reports indicate much alfalfa killed or injured by freeze in eastern Oregon and Washington. Yakima's reported losses range from 25 per cent upwards. Serious loss has occurred in Umatilla and Morrow counties. Clover has acreage is short due to dry summer, many seedlings being killed and others developing very poor stands. Much vetch was also killed by freezing. Outlook is for shortage of hay, provided normal feeding is done. Clover seed is high, and O. A. C. crops department reports comparatively few inquiries.

FARM REMINDERS

From the O. A. C. School of Home Economics, Corvallis.

During the nose of the cream separator will prevent the cream from curdling and making spots on the butter.

During a cross-cut of about 1-4 inch the center of potatoes before being baked will allow the steam to escape and cause them to be cooked evenly.

Amount of kerosene on the lamp should be checked and the wick trimmed.

Washing with a small amount of hot water will do the trick. If needed wash dishes and adding a little more water will do the trick. Wash or pour boiling water over them to remove the skins.

Stuffed food can be cooked more evenly with a silk thread.

When washing lettuce, remove the outer leaves first and with a sharp knife cut out the core and place in cold running water and the lettuce will be more easily washed.

When washing and draining, place covered strainer in sink and it will not be necessary to wash the lettuce.

When water on the toilet table will add cream from the face and prevent much trouble on wash.

When washing the inside of banana peel, use the same on the fingers.

When the stove is cleaned by using a silver on silver are removed.