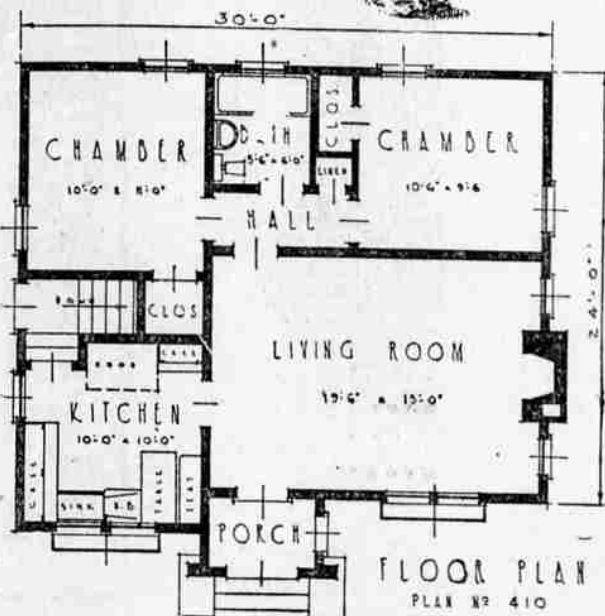
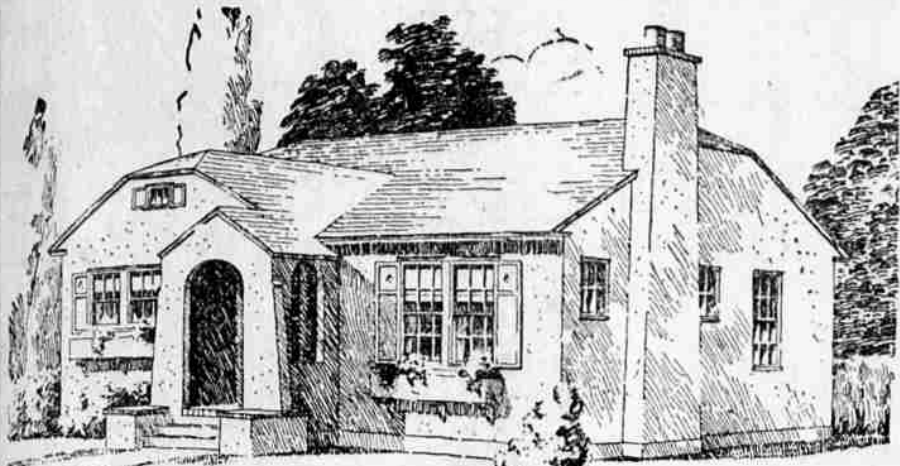


SMALL HOUSE HAS MERIT AS LABOR SAVER

Convenience and Thrift in Construction Are Features of Modern Plans for Small Home of Attractive Design



A WONDERFUL little cottage which anyone would be proud to own. It is very compact and has many conveniences to make it an ideal home.

cozy with a very little expenditure in decoration. The kitchen is close to the front door and has a front view. This is very nice in itself.

cross ventilated and connect with the living room by a small hall. The bed rooms are both large enough for double occupancy and have large closets.

NEWS OF AGRICULTURE AND LIVESTOCK

Up to Date Information to Help Develop Progressive Farming; Stories in the News, of Interest to the Farmer

WINTER CLEAN-UP METHODS REFLECT IN PEST CONTROL

OREGON AGRICULTURAL COLLEGE, CORVALLIS, Feb. 7.—(Special)—In control of fruit diseases and insect pests orchard practice on that farm coincides with experiment station findings in placing considerable value on winter clean-up methods.

WISCONSIN TESTED 77,000 HEAD OF CATTLE FOR THE DISEASE

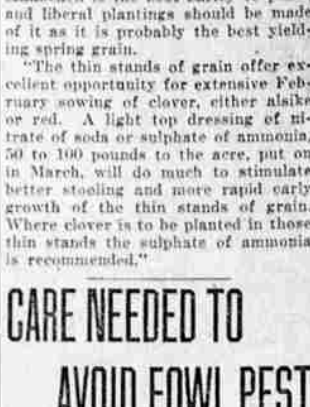
WASHINGTON, Feb. 7.—The trouble with the cattle situation is caused not so much by a shortage of feed, as it is the calling of loans by private financing agencies. This is the conclusion formed by the president's agricultural conference, here, after a thorough investigation into the livestock question.

WHEAT PLANTING IS BENEFITED BY SEED TREATMENT

Earlier planting of wheat to replace crops frozen out in the late cold spell is apparently rendered justifiable by use of copper carbonate treatment for the seed, field observations at the Oregon experiment station show.

ONE TASK LESS FOR THE FARMER

Innovation Known as the "Plow-Mate" Proves Fine Pulverizer When Attached to Beam of the Plow.



There's one job less for the farmer, with the innovation shown here. It's called a "plow-mate," because it is attached to the beam of the plow and pulverizes the clods of earth as they leave the mold board in plowing.

CARE NEEDED TO AVOID FOWL PEST

(By NEA Service) MANHATTAN, Kas., Feb. 7.—Despite embargo of eastern states against poultry from states in which the European fowl pest has broken out, and despite cancellation of chicken shows to check the progress of this epidemic, poultry authorities say all that is needed to fight the pest is strict cleanliness and watchfulness.

POULTRY BUSINESS IS HURT BY PANIC

That the shipping of day-old chicks across state lines is not affected by the quarantine and embargo regulations against the fowl plague is the assurance by Oregon poultry breeders given by the state college experiment station.

LEADS IN BUTTER

The greatest butter selling organization is said to be the Minnesota Co-operative Creameries Association, representing 400 creameries in that state.

BIG FLOOD LOSSES

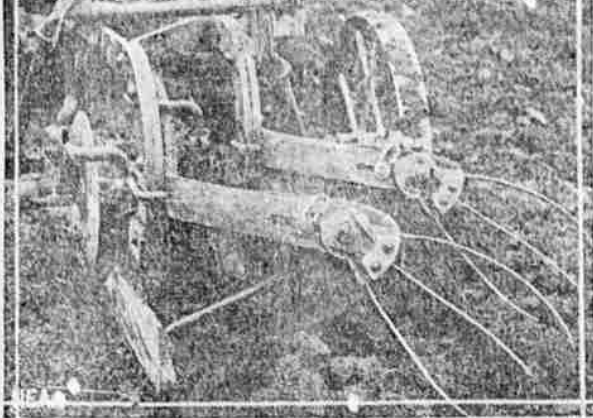
Nearly \$20,000,000 was lost during the year ending July 1, 1924, through unpreventable loss from the three great floods and a number of lesser ones in that period.

"Good Equipment Makes a Good Farmer Better"

Our Store Is Headquarters For the Best the Market Affords Here you will find McCormick-Deering tractors, engines, plows, tillage tools, seedling and planting equipment, cultivators, hay tools, harvesting machines, corn machines, cream separators, wagons, etc., of the very latest, tried and true design.

CELERY BLENCHED IN 6 TO 10 DAYS

(By NEA Service) ST. PAUL, Minn., Feb. 7.—A new method for blanching celery "while you wait," that is, in from six to ten days, as compared with present day methods of hilling and boarding up, which take from three to six weeks, has been discovered by Dr. R. B. Harvey and L. O. Regelmahl, plant physiologists of the University of Minnesota.



There is a possibility that by the new system celery can be blanched sufficiently for the trade while it is in transit in tight cars.

KEEP WATER PURE

Going after poultry lice by dousing their water, is not generally recommended by husbandmen. Such preparations will stop hens from drinking the water, and so reduce egg production.

SOW CLOVER NOW

Sweet clover seed should be sown about this time on ground difficult to cultivate, so that the rains may be depended on to cover the seed sufficiently for germination.

SHORT WAY TO PORK

It takes 642 pounds of corn to make 100 pounds of pork, cites the University of Illinois college of agriculture. Yet this amount was produced with 387 pounds of corn when 42 pounds of tankage was fed as a supplement.

FEW GOOD CATTLE

Only about 5 per cent of the cattle received at the Chicago livestock market grade as prime or choice. Poor breeding is given as the chief cause for keeping down the grade of cattle.

PROTEIN FOR POULTRY

Sour milk is essential in the poultry diet. A dozen pullets should have at least three quarts of sour milk daily to supply the necessary amount of animal protein.

GRAPE PRUNING

On the average, best results have been obtained in pruning grapes during the late winter or very early spring. This should be done after most of the danger of severe freezing is over but before activity is apparent in the flow of sap.

ADVICE GIVEN ON KEEPING RECORDS

Directions for keeping fruit tree records to show the productive and the nonproductive trees, have been asked of the experiment station recently by Lane county and other Oregon growers.

A method recommended provides that the grower, usually during the early part of August, go over the orchard with a specially ruled notebook. He makes notes on the condition of the trees and the prospective crop, and whether any tree is making poor growth, or needs fertilizer. He also estimates and records the yield of each individual tree.

FROM THESE RECORDS THE GROWER MAKES COMPARISONS BETWEEN THE DIFFERENT TREES IN THE ORCHARD, AND OF THE YIELDS FROM YEAR TO YEAR.

THE GROWER TELLS BY THE RECORDS WHAT TREES MIGHT BE BENEFITED BY AN INCREASE OF FERTILIZER.

LATER HE SEES WHAT HAS BEEN THE EFFECT OF SUCH AN INCREASE ON THE YIELD AND THE CONDITION OF THE TREE.

HE MAY FIND IT NECESSARY IN SOME CASES TO PULL THE TREES THAT DO NOT RESPOND TO THE ADDED CARE AND EXPENSE.

YOUR CREDIT IS GOOD WETHERBEE-POWERS USE IT! We charge no interest

YOUR HOME CAN AFFORD THE BEST 3-PC. ENAMEL CHAMBER SUITE Bowfoot Bed --- Dresser --- Cheffonier Ivory or Silvertone \$54.75 \$5 Cash \$1.50 Week

A Timely Sale of Sample Baby Carriages and Sulkies \$35.00 Fibre Reed Carriage \$26.95 \$45.00 Reversible Gear Carriage \$37.85 \$23.50 Fibre Reed Side Sulkey \$18.75 \$52.50 Sleeper Carriage \$46.50 WETHERBEE-POWERS EAST NINTH AND OAK

Wisconsin Leads in Tuberculin Tests

MADISON, Wis., Feb. 7.—Wisconsin leads the country in testing cattle for tuberculosis. Although Iowa is ahead of all other states in the number found tuberculin positive in one test, the Badger state has secured even in this method of testing.

FINANCE, NOT FEED, LIVESTOCK TROUBLE

WASHINGTON, Feb. 7.—The trouble with the cattle situation is caused not so much by a shortage of feed, as it is the calling of loans by private financing agencies.

Winter Damaged Wheat Plantings Are Needed Now

"Winter damage to exceed \$3,000,000 was suffered by winter wheat alone in the Willamette valley. There has been a serious loss of winter oats and vetch while winter barley was almost wiped out," said G. R. Hyslop, agronomist of the experiment station, in a review of crop conditions resulting from the December cold spell.