

# THE MODE INDULGES ITS PENCHANT FOR SIMPLICITY IN MANY CHARMING WAYS

## Models That Lessen the Exactions of the Straight-Line Frock—One-Piece Dresses Follow the Line of the Greatest Becomingness—



By MAUDE HALL

THE mode continues to indulge its penchant for simplicity of line and emphasizes beauty of execution. New models from Paris are loyal to the straight line, but they lessen its exactions. The waist-line shows a tendency to return to normal. The lengthened waist-line and the lengthened skirt make a division between the hips and the ankles that only a splendid figure can carry with justice, so Fashion seems to be trying to effect a readjustment of this matter.

Despite the reaction against black, it

is returning to favor and from all reports intends to contend for first place among fashionable colors. Lovely frocks of black crepe roma and Bengal crepe are among the newest designs. One of extreme simplicity has a two-piece gathered skirt attached to the lower edge of a bodice with square neck and an inserted vestee. A casing is stitched underneath the dress above the top of the skirt, with elastic inserted to hold in the fulness. There are deep revers, which may be cut off just above the waist-line, or which may continue to the hem of the skirt, being slashed

at the waist-line for the soft girde of self-material to pass through.

One finds a plenty of color, however, and it is of the most charming tone. Belts, bows and buttons are the season's color extravagances, but more moderation is expressed in gowns. A frock designed for stout as well as slender figures is in periwinkle and tan check material, combined with tan crepe. The side panels on the skirt and the deep collar are edged with picot points of the crepe. The waist closes at the left side edge of the inserted vestee. The back extends over the shoulders, joining the gathered shoulder edges of the front.

Another model equally impartial in its becomingness is designed of striped cotton eponge and made to be worn with separate blouses. The front is deeply slashed and bound with braid, this trimming being repeated on the large armholes and the pockets. The belt is a colorful affair in suede with a buckle equally as spirited in tone. The shoulders are quite long and the neck edges are caught together under the round collar of the plain white dimity blouse.

The most dangerous rival of black is brown, and the nearest competitor of brown is navy or midnight blue. For afternoon and indoor wear, sand, beige and nude are exceedingly fashionable colors, both here and abroad. In making up end-of-the-season frocks which must do duty for early Fall, it is advisable to select one of the many new blistered fabrics, for there is no doubt that they are going to be extremely de rigueur. They are handsome made into one-piece dresses and are seen also in smart separate skirts accompanied by blouses of crepe de Chine, crepe Georgette, pussywillow silk, etc.

One never gets very far from the crepes, for some new variety constantly seems to be putting in an appearance. Brown faille crepe may be made into an adorable frock for semi-formal wear after a model that has a waist with V-shaped neck and applied front that closes on the left side. The attached two-piece skirt also closes at the left side-seam. It has gathered side tunic sections which fall in points at the front and which may be finished with a hem-stitched hem, or with picoted edges.

The exception to the rule of the straight-line one-piece frock is found in the outfit composed of skirt and blouse, which may be worn separately also. The season offers a number of unusually attractive models. In one the blouse, of sand color pussywillow taffeta, closes in front through an applied plait band. The back of the blouse extends over the shoulders, where it is joined to the gathered fronts. Tiny frills of self-material outline the collar, cuffs and plait at the front through which the blouse fastens.

The skirt is of a simple, elegant style and may be developed in a variety of fabrics. Serge, tricotine, tweed, sports satin, etc., are all in good taste and may be had at moderate cost. The skirt has a 2-inch raised waist-line and closes at the left side-seam. There are gathers across the back and at each side of the front gore. There are inserted pockets, which may be substituted for patch pockets, or omitted entirely.

Two styles of flowing sleeves are provided in a straight-line frock of light weight serge combined with satin ribbon. One style reaches almost to the wrists, and is slashed above three times, the opening being bound with the ribbon. The second style is elbow length, simple finished with a hem. A turn-down collar finishes the V-shaped neck and is edged with blanket-stitch embroidery, to match the sleeves. Below the waist-line, front and back, the dress is cut out and gathered to straight waistbands, over which the ribbon side-belts are arranged.

Trimmings make many frocks as quaintly and picturesque as an old-fashioned miniature. As has been hinted before, they are all exceedingly colorful. The same hues are used over and over—red, yellow, blue, green, rose and black—but they are used in such a variety of clever ways that they always seem new.

**EMBROIDERIES ONE WILL TAKE PLEASURE IN MAKING**

Charming Flower Representations That Add to The Interest of Little Things in Dress

By MONA MULLEN

A little touch of needlework, a little dab of paint, Are tasks that none would think to shirk To make a trimming quaint.

—Rhyme of the Art Embroiderer.

SOME of the most wonderful things in the way of accessories this season are achieved with "touches of needle-work" and "dabs of paint," but the painting is also done with the needle and colorful silk and cotton threads. Just now applique embroideries are the rage. They are used on frocks—and sometimes frills—waists, hats, bags, collars, clothes for children and for almost any purpose that an artistic fancy might conceive.

The work is simple, but the effect is always picturesque and beautiful. Take, for instance, the design illustrated. There are four different motifs, two of each being given in the pattern, with two reverses of each. The first flower is made of organdy, satin, beige, or any of the light shades of tan being appropriate. The edges are button-holed in red, but the selection of a color would depend largely upon the background of the embroidery. Six-strand cotton is used, all of the six strands being threaded into the needle. A covered button forms the center. The leaves are embroidered on the background with flat satin stitch, outline being used for the stems.

In flower No. 2, the large petals may be made of lavender gingham or organdy, and the small ones of lavender and white check material. Very small checks should be selected, however. The edges are embroidered in blanket-stitch, while the lines representing the stamens are in Mille fleur stitch; Satin and outline stitches form the leaves and stems respectively.

The third flower is made of pink and white gingham, edged with blanket stitches in black. Number 4 is more elaborate, being made of three shades of lavender and worked with stitches in the same color. The center is made of black in raised satin stitch, French knots being used for the stamens. The leaves, which are worked on the background, are in flat satin and outline stitch. All of the flowers stand out from the background.

### Lesson In Home Dressmaking

#### Design for Two-Piece Closed Drawers Made of Nainsook and Trimmed with Embroidery

NOW that petticoats are so often replaced by bloomers, this design for a pair of drawers is of particular interest. Soft materials, such as nainsook, longcloth, crepe de Chine or tub satin, should be used for the development of the model, which requires 1 3/4 yards of what-

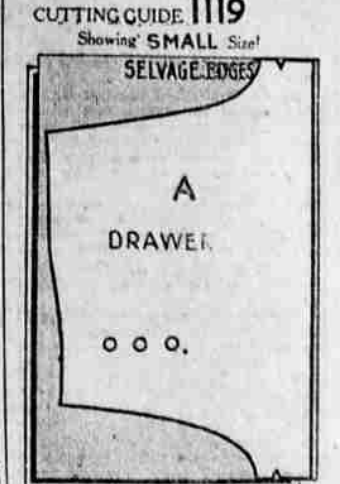
on line of small "o" perforations and stitch 1 inch from folded edge. Insert a tape, or elastic through the hem to hold in the fulness. Turn the lower edge of drawers under on small "o" perforation for a hem, or, if there is to be hemstitches,



Model for Closed Drawers

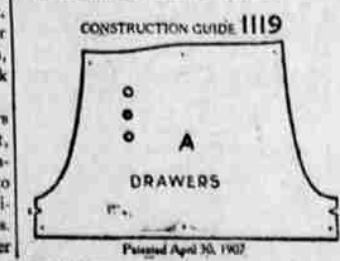
ever is selected, at least 40 inches wide. To properly cut the drawers, place an open width of the material on the cutting table, as is shown in the cutting guide. The large "O" perforations should rest on a lengthwise thread of material. If the pattern is carefully placed on the material as illustrated, there can be no mistakes. If preferred, the embroidery may be worked before the drawers are cut. As long as there are no widths or edges to be stretched out of proportion, however, it is quite as acceptable to work the embroidery afterward.

It adds to the daintiness of the drawers to have the hems hem-stitched. First, close the leg seam as notched. Close center seam, from upper edge in front to upper edge at back. The front is indicated by line of large "O" perforations. Turn the upper edge of the drawers under



CUTTING GUIDE 1119 Showing SMALL Size! MATERIAL OPEN 40 IN. WIDE Patented April 30, 1907

pull the first thread at a depth from the edge that the hem is to be turned under. The embroidery is worked in eyelet, raised satin and outline stitches.



CONSTRUCTION GUIDE 1119 Patented April 30, 1907

#### GOLD AND SILVER FISH

The average length of life of these ornamental fish is 10 to 12 years. They may be kept in glass bowls or globes, and if young and healthy when procured, will live that length of time by the observance of a few rules and regulations.

Allow one fish to each quart of water. Use the same kind of water all the time. Choose the supply and use it constantly. Change water every day and frequently wipe the globe to remove any slime or dirt. Use deep vessels with clean pebbles at bottom.

Keep them where there is light and air, but not in the sun. The fish should be nearly of a size, else the larger ones may kill the smaller.

Use a small net when removing them to change the water.

Diseased goldfish will come to the top of water for air and often make a clicking noise. They should be removed to a separate bowl.

Don't shake the globe violently. These fish are susceptible to noise and it might kill them.

A prepared water is sold by dealers, which suits them better than any other food. If they cannot be obtained, a teaspoonful of very small, dried bread crumbs given once a day to every 10 fish is sufficient. They find sustenance in the water. If the water ever looks turbid, change it immediately.

#### CREAMED EGGS WITH SARDINES

Melt 1/4 cupful of butter in a saucepan, add 1/4 cupful of fine stale bread crumbs and slowly 1 cup of this, hot cream or top milk, stirring meanwhile; bring to the boiling point and add 2 hard-cooked eggs finely chopped and 1 large box or 1 1/2 small boxes of sardines that have been skinned, boned and finely minced. Heat again to the boiling point and serve at once on hot buttered rounds of toast. Sprinkle with 1 teaspoonful of finely chopped parsley. Serve as the main dish at luncheon or for Sunday night supper.

#### COOKED SALAD DRESSING

Sift together 1 tablespoonful salt, 1/2 tablespoonful mustard, 2 tablespoonfuls of sugar, a few grains of cayenne and 1 tablespoonful of cornstarch; add the yolks of 4 slightly beaten eggs, 1/2 cupful of melted butter, 1/4 cupful of milk and very slowly 1/2 cupful of vinegar diluted with 2 tablespoonfuls of cold water, stirring constantly until well blended. Cook in a double boiler until mixture thickens, stirring the first five minutes, afterward occasionally. Cool and thin with cream to the consistency to pour, before using. It takes but a few minutes to cook this dressing.

#### KEY TO ILLUSTRATIONS

The fashions shown on this page are Pictorial Review designs. Numbers and sizes are as follows:

Dress No. 1131. Sizes, 34 to 50 inches bust. Price, 35c.

Dress No. 1144. Sizes, 34 to 50 inches bust. Price, 35c.

Dress No. 1158. Sizes, 34 to 46 inches bust. Price, 35c.

Dress No. 1160. Sizes, 34 to 46 inches bust. Price, 35c.

Dress No. 1123. Sizes, 34 to 46 inches bust. Price, 35c.

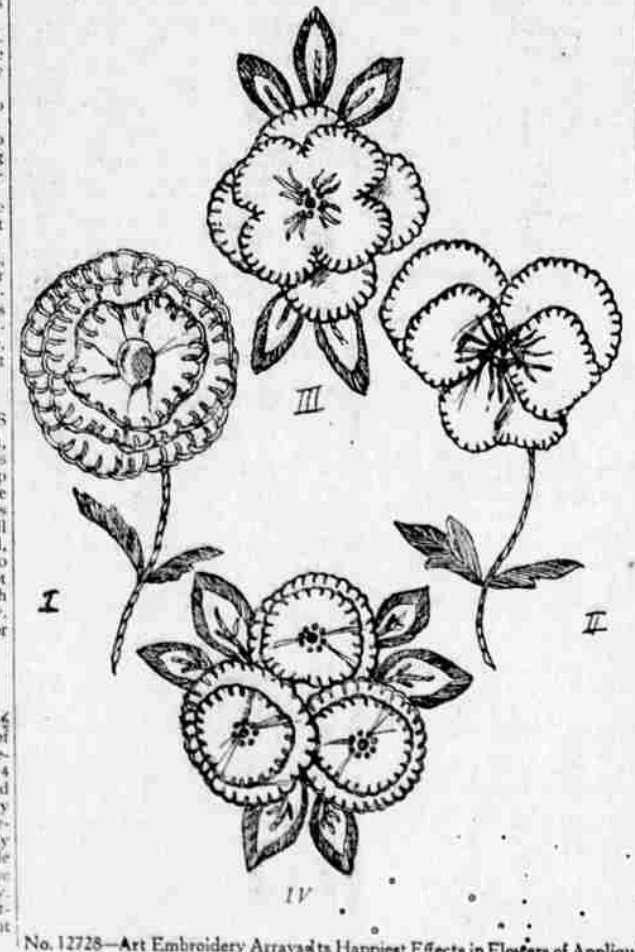
Blouse No. 9870. Sizes, 34 to 48 inches bust. Price, 30c.

Skirt No. 1051. Sizes 34 to 48 inches bust. Price 30c.

Ladies' Drawers No. 1119. Sizes, small, medium, large. Price, 30c. (Lesson in Dressmaking.)

Applique Embroidery No. 12728. Transfer, blue or yellow, 20 cents; finishes 2 and 2 reverses of each of the four motifs.

Pictorial Review patterns on sale by local agents.



No. 12728—Art Embroidery Arrays its Happiest Effects in Flowers of Applique