

**INVESTIGATE THE OVERLAND**

The OVERLAND Plants are the Largest and Most Thoroughly Equipped of Their Kind in the World. No Motor Car Plant on Earth Can Compete With Them.

Every part of every Overland is made in the Overland plants. They make what others are forced to buy. The motor and all of its parts—the frame—crankshafts—springs—axles—steering gears—transmissions, etc.—in fact, everything from the smallest bolts to the big, handsome body, is made by Overland men in Overland factories.

This, and only this method of production can produce accuracy to the 1-1000 part of an inch.

Stop and make a few comparisons. Take the specifications of any other car of a given price and see the better value you get in an Overland. Compare the wheel base—the type of motor—the size of the wheels—the capacity. Compare the design—the body work—the finish and trimming.

Then note the distinguished and striking appearance of the Overland. Particularly the Fore Door, which is the design of the year. And the Fore Door costs no more. We

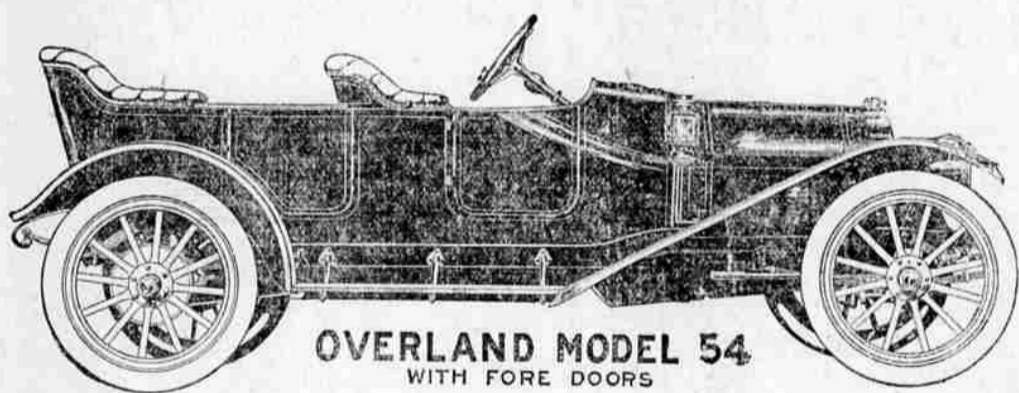
There are 22 different Overland bodies to choose from, made on five styles of chassis. You have your choice of Roadsters, Coupes, small or large Touring Cars, with Fore Doors, or Open Fronts, or Torpedo Bodies. Prices range from \$775 to \$1675.

We will be glad at any time to explain the greater Overland value. Write today for the beautiful Overland Catalogue, which describes and explains all the models in detail.

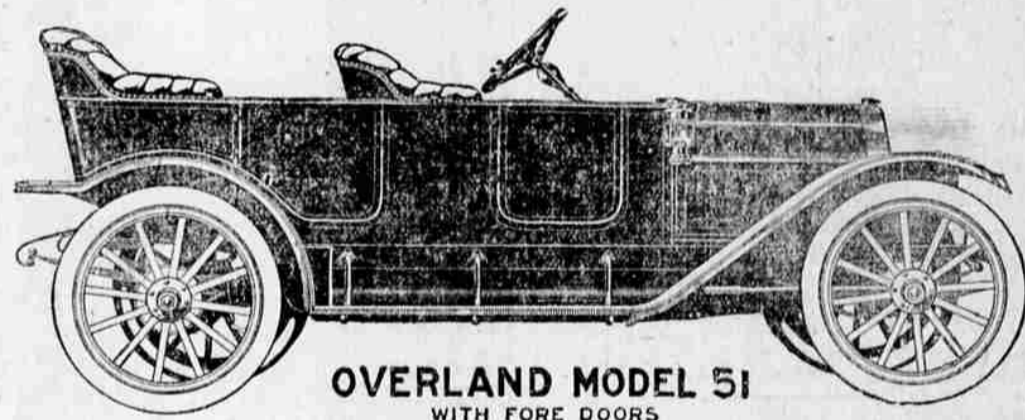


**FROM 875<sup>00</sup> TO 1825<sup>00</sup> F.O.B. PORTLAND,**  
**DISTRIBUTORS**  
**J. W. LEAVITT & CO.**  
**PORTLAND ORE.**

Don't forget that the Overland Cars are backed up by a written guarantee and that there is \$25,000.00 worth of parts at Portland ready to replace any part of the machine that might get disabled. We take care of our customers.



**OVERLAND MODEL 54**  
WITH FORE DOORS



**OVERLAND MODEL 51**  
WITH FORE DOORS

Model 54. The edition de luxe of Overland Cars. A big handsome car of masterful design. Its 10-horsepower engine is one of the quietest and most flexible four-cylinder motors built, and on high speed, throbbles from four to sixty miles an hour. Constructed on lines only attempted by makers of cars costing several times as much with a lesser output than the Overland; with more essential and distinctive features than any other car on the market at anywhere near the price. When you investigate cars in relation to value, this car stands ready to prove the needlessness of paying more than the Overland price. Standard equipment includes three oil and two gas lamps, generator, horn, tools and Warner speedometer. Sells for \$1925, with complete equipment, at Eugene.

**SPECIFICATIONS**

Wheel Base—118 inches.  
 Tread—56 inches.  
 Seating Capacity—Four passengers.  
 Body—Torpedo.  
 Horsepower—10.  
 Transmission—Three speeds selective, and reverse.  
 Clutch—Cone.  
 Ignition—Bosch, two independent systems, eight spark plugs.  
 Brakes—External contracting; internal expanding.  
 Springs—2 1/2 inch semi-elliptic front; 3/4 elliptic rear.  
 Steering Gear—Worm and segment adjustable, 1 1/4 inch posts.  
 Front Axle—Drop forged I section, Timken bearings.  
 Rear Axle—Wood artillery, 1 1/2 inch spokes.  
 Tires—34x4 inch.  
 Frame—Pressed steel, double drop.  
 Lamps—Two gas, three oil.  
 Color—Dark blue body, crutch gray gear.

Model 51. The phenomenal success that attended the introduction of Overland Model 51 proves conclusively its possession of real merit. By a study of the specifications it will be instantly apparent that all the requirements of the most exacting buyers have been anticipated. The car sells itself. The more you know about automobile construction, the more you will appreciate the value in the "51." With this car we give you an option of fore doors at the regular price. Every detail in construction bears evidence of the careful and painstaking workmanship that characterizes every Overland automobile. With complete equipment sells for \$1500 at Eugene.

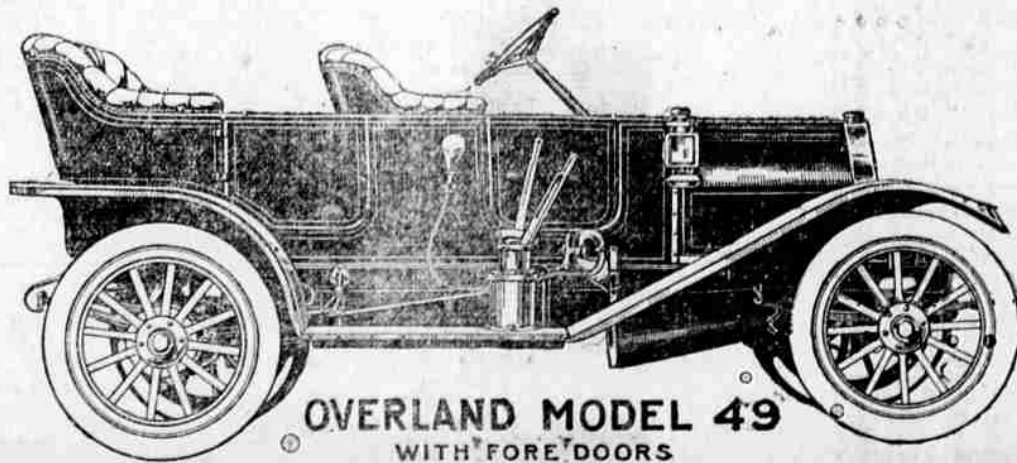
**SPECIFICATIONS**

Wheel Base—110 inches.  
 Tread—56 or 60 inches.  
 Seating Capacity—Five passengers.  
 Horsepower—30.  
 Transmission—Three speeds selective, and reverse.  
 Clutch—Cone.  
 Ignition—Remy.  
 Brakes—Internal expanding, external contracting.  
 Springs—2-inch, semi-elliptic front, 3/4 elliptic rear.  
 Steering Gear—Worm and segment adjustable.  
 Front Axle—Drop forged I section.  
 Rear Axle—Semi floating.  
 Wheels—Artillery wood.  
 Tires—34x3 1/2 inches.  
 Frame—Pressed steel, single drop.  
 Lamps—Two gas, three oil.  
 Color—Dark blue body, cream gear.

Model 49. With fore doors, is a high-grade touring car, embodying the latest refinements of body design, with a seating capacity for five passengers. This model is equipped with selective sliding gear transmission, and the clutch is so perfectly balanced that but little effort is required to disengage it. There are so many desirable features about this model, including graceful lines, sweeping fenders, handsome finish and easy-riding qualities, that it is difficult to see where a car, for considerable more money, can offer a better value.

**SPECIFICATIONS**

Wheel Base—102 inches.  
 Tread—58 or 60 inches.  
 Seating Capacity—Five passengers.  
 Horsepower—25.  
 Transmission—Three speeds selective, and reverse.  
 Clutch—Cone.  
 Ignition—Remy.  
 Brakes—Internal expanding, external contracting.  
 Springs—Semi-elliptic front, full elliptic rear.  
 Steering Gear—Worm and segment adjustable.  
 Front Axle—Drop forged I section.  
 Rear Axle—Semi-floating.  
 Wheels—Artillery wood.  
 Tires—32x3 1/2 inches.  
 Frame—Pressed steel.  
 Lamps—Two gas, three oil.  
 Color—Dark blue throughout.  
 Price—\$1200 f.o.b. Eugene.  
 Top and wind shield extra.



**OVERLAND MODEL 49**  
WITH FORE DOORS

Local Agents

**Anderson-Pierce**  
**AUTO COMPANY**

11th and Oak Streets  
EUGENE, OREGON