

GUARD'S SEATTLE-YUKON EXPOSITION CONTEST

We have received a number of applications to the contest in the past week, which will all be published in Monday evening's Guard. One gentleman writes in from Cottage Grove asking us to enter the name of Miss B. in the contest. The gentleman says the young lady is entitled to go to the Fair and he desires that she will have a very pleasant trip, and further states that he knows if she is successful in winning in the Guard contest, and accompanies the Lane County party to the Fair, she will have the trip she is entitled to. We are receiving applications from all parts of the county, and we will here state for the benefit of the many who have asked the questions, that any gentleman or lady in Lane county, or anywhere else, have a perfect right to vote for any candidate who has entered this contest. Remember that each paper will contain, from Monday, on a coupon good for one vote, which should not be overlooked. If you are not a subscriber to the Guard, either Daily or Weekly, you can vote for any young lady by subscribing, and by paying a year's subscription in advance, you can give her the number of votes, according to the subscription. Remember, when you give a young lady your support in this contest, you are merely assisting to have your county represented at the Seattle Fair in the manner it should be.

SUBSCRIPTION RATES.

One year by carrier, \$5.00 1000 votes
 One year by mail, \$3.00 1000 votes
 Six months, carrier, \$2.50 400 votes
 Three months carrier, \$1.50 150 votes
 Weekly, one year \$1.50 500 votes
 A coupon in the paper good for one vote will be published beginning Monday.

APPLICATION COUPON.

 +-----+
 + Miss +
 + Address +
 + Vouched for by +
 + Good for 50 votes. +
 +-----+

Cut out the above coupon and mail to us and we will enter your name in the contest, which will entitle you to 50 votes. Please send your name in at once as this offer will hold good for only a short time only. A coupon in the paper good for one vote, will be published daily beginning Saturday.

Voting Districts.

Lane County is divided into districts as follows:
 Eugene, three to go.
 Cottage Grove and Lorane, one to go.
 Creswell, Goshen, Dexter and Jas-

per, one to go.
 Springfield, one to go.
 Marcola, Coburg, Wendling and Mabel, one to go.
 Junction, Irving and Harrisburg, one to go.
 Elmira, Blachly, Mapleton, Acme, and Crow, one to go.

Conditions.

1 year's subscription to the Guard, \$5.00 by carrier; \$3.00 by mail, which entitles any young lady in the contest to (1000) one thousand votes.
 6 months, \$2.50 400 votes
 3 months, \$1.50 150 votes
 Weekly, \$1.50 500 votes

THE CHRISTMAS DINNER

In spite of the fact that the word dyspepsia means literally bad cook, it will not be fair for many to lay the blame on the cook, if they begin the Christmas dinner with little appetite and end it with distress or nausea. It may not be fair for any to do that—let us hope so for the sake of the cook! The disease dys-

pepsia indicates a bad stomach, that is a weak stomach, rather than a bad cook, and for a weak stomach there is nothing else equal to Hood's Sarsaparilla. It gives the stomach vigor and tone, cures dyspepsia, creates appetite, and makes eating the pleasure it should be.

Herman Schmidt came down from Creswell this noon.

"The Store That Saves You Money"

Has such a fine line of useful articles appropriate for Christmas Presents—something for everybody, young or old, rich or poor, that it has become

FOR FATHER

TURKISH ROCKER,
 OFFICE DESK,
 OFFICE CHAIR,
 COUCH,
 FOOT REST,
 HALL RACK,
 SECTIONAL BOOK CASE.

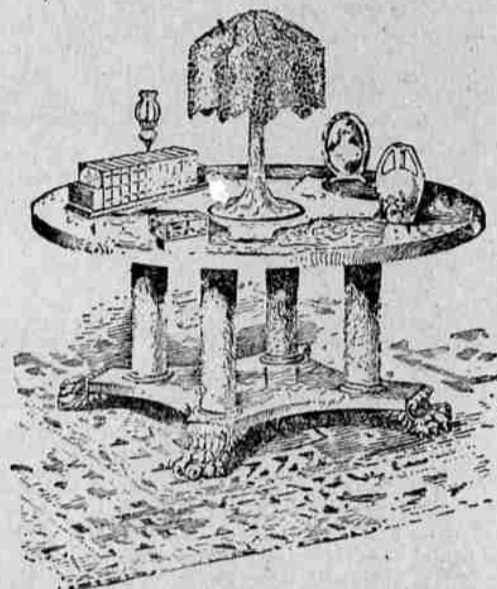
FOR MOTHER

PORTIERES,
 LACE CURTAINS,
 COUCH COVER,
 WORK BASKET,
 SEWING ROCKER,
 WILLOW ROCKER,
 CARPET,
 JARDINIERE,
 JEWEL RANGE,
 LENOX HEATER,
 BREAD MIXER.

FOR BROTHER

BOOK CASE,
 FOLDING TABLE,
 CHIFFONIER,
 MORRIS CHAIR,
 STUDENTS' TABLE,
 MIRROR.

Santa Claus Headquarters



FOR SISTER

PICTURE,
 WRITING DESK,
 PRINCESS DRESSER,
 DRESSING TABLE,
 BEDROOM ROCKER,
 SMALL RUG,
 STAND,
 TABOURETTE.

For the Married Son or Daughter

BED, SPRING AND MATTRESS,
 LIBRARY TABLE,
 CHINA CLOSET,
 BUFFET,
 EXTENSION TABLE,
 SET DINING CHAIRS,
 DRESSER,
 LARGE RUG,
 ROCKER,
 KITCHEN UTENSILS.

For the Little Ones

CRIB,
 GO-CART,
 HIGH CHAIR,
 CHILD'S ROCKER,
 CHILD'S MORRIS CHAIR.

Select Now--Pay Later--Deliver Christmas

The Lighted Corner



Successors to DAY & HENDERSON

Seventh and Willamette



The

TRAVIOLOS

EXPERT HOOP ROLLERS AND NOVELTY JUGGLERS

To Appear at the Bell Theatre Week Commencing MONDAY, DECEMBER 14

GRAND OPENING OF The Bell Theatre

MONDAY EVENING, DECEMBER 14

Every Act a Feature Act. One Hour Show
 No Long Waits to Contend with

Show Closes with Latest Animated Pictures

Doors Open at 7 P. M.

Performance at 7:30

Matinee Every Afternoon at 2:00 p. m. Admission to Matinee 10 Cents

Evening Performance 10 and 20c New Cherry Block, Cor. 6th and Willamette. Don't Miss