

NEW CHURCH BUILDING READY FOR DEDICATION

HANDSOME AND COSTLY HOUSE OF WORSHIP JUST COMPLETED BY CONGREGATION OF CENTRAL PRESBYTERIAN CHURCH TO BE FORMALLY OPENED TOMORROW

The splendid new house of worship just completed by the Central Presbyterian church at the corner of East Tenth and Pearl streets at a cost of approximately \$20,000, will be dedicated tomorrow. Dr. W. H. Foulkas, pastor of the First Presbyterian church of Portland, will deliver the dedicatory sermon at the evening service and Dr. Nave, pastor of the church at Cottage Grove, will deliver a sermon at the morning service. Special music has been prepared for the occasion, and this feature of the service promises to be interesting. The pastor, Rev. H. N. Mount, will have charge of all the services.

The new church building is the most costly, the handsomest and the largest in the city. It is built entirely of stone, the material coming from the Eaton quarry near Hendricks' park at the eastern limits of the city. It is of modern architecture, handsome and imposing in design, and will perhaps meet the requirements of the congregation for the next fifty years.

The building has a much larger seating capacity than any other church edifice in the city and can seat more people than any building of any nature in the city with the exception of Villard hall at the University. The seating capacity of the new church is 1250 by actual measurement of the seating space.

The interior of the building is splendidly arranged. The pulpit may be seen from any corner of the structure, and when it is crowded every person in the house has a good view of the speaker. A large curtain



MRS. RUSSELL SAGE.

Widow of famous financier, who has purchased historic Constitution Island, near West Point, and presented it to the United States government. Mrs. Sage is also devoting many millions of dollars to various philanthropic enterprises.

separates the main auditorium from the Sunday school department in the rear, and the curtain is drawn aside when occasion demands, making one huge room of the two departments. The Sunday school department consists of three large rooms on the lower floor, each separated by sliding doors, and as many rooms in the gallery. The gallery rooms and the rooms beneath have a large seating capacity, large enough, it is thought, to accommodate the Sunday school for some time to come.

In the basement is a large parlor for the prayer meeting, committee meeting and ladies' aid society, a commodious dining room and kitchen and the heating plant. The building is heated with hot water and the plant works admirably. It was put in by T. M. Barr, of Salem, and is an invention of his own. In half an hour's time after the fire is built in the furnace the radiators are hot and the rooms above are comfortably warm. The ventilation system is splendid, there being no direct drafts upon any one seated in any part of the building.

The seating arrangements are excellent, the benches being arranged so that every person directly faces the speaker.

The two large art windows, one in the east end of the building and the other in the north end, are the finest in Eugene. They are of very handsome design and are of excellent workmanship.

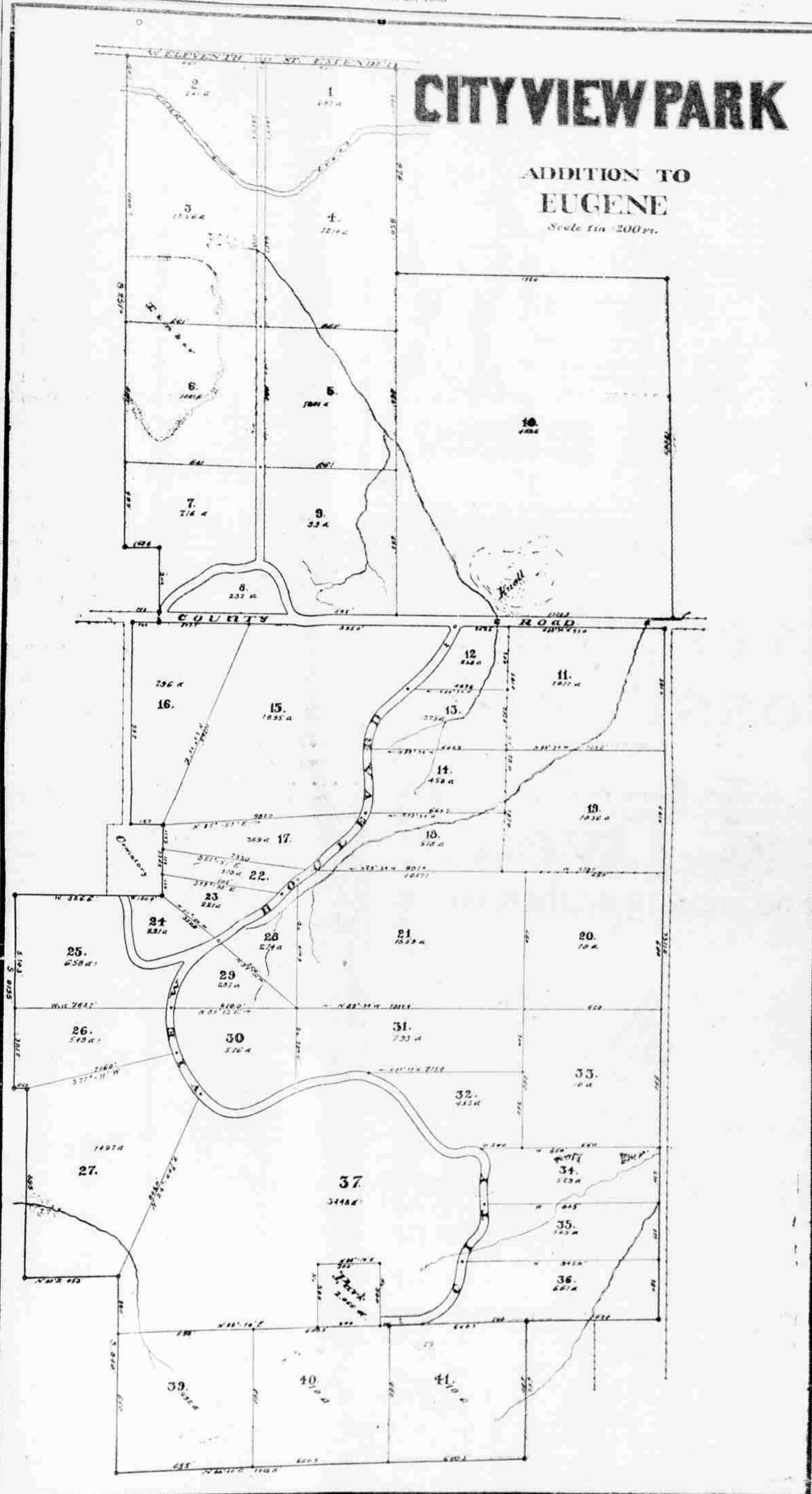
The settee on the rostrum, the pulpit desk and the communion table are the gift of Mrs. S. B. Eakin, a member of the church.

The main entrance to the building are in the northwest and southwest corners, with an entrance for the pastor near the pulpit.

John Hunzicker, the local architect, furnished the plans and specifications for the building, and the construction work was under the direction of W. O. Heckart, different parts of the work having been let to different contractors.

The building is a credit to the city and will be the pride of any congregation in the land.

A Sure-Enough Knocker
J. C. Goodwin, of Healdville, N.C., says: "Bucklen's Arnica Salve is a sure-though knocker for ulcers. A bad one came on my leg last summer. That wonderful salve knocked it out in a few rounds. Not even a scar remained." Guaranteed for piles, sores and burns, etc. 25c at W. A. Kuykendall's drug store.



SOUTHWEST SUBURB OF EUGENE, OREGON.

375 acres known as the E. H. Hawkins farm, situated and fronting on West 11th street, the same street that has the State University, Carnegie Library, High School, Central School and the longest length of pavement of any street in the city. It will be sold in acreage tracts to suit purchasers, but the buyers must also suit us. No "undesirables" can purchase in this tract and our building restrictions insure enormous increase in values.

The largest net profits from real estate in and about Eugene have been made on suburban acreage. S. H. Friendly bought five acres at \$1000 per acre and sold for \$3500 per acre. S. P. Stadden bought at about \$50 per acre and is selling at \$1000 to \$1500 per acre. Suburban acreage always yields good income from rents, wood, fruit or gardening, grows rapidly in value and affords a place to make a good living if you wish to occupy it for a home.

CITY VIEW PARK is only five minutes ride from the High School on Willamette street. It is so artistically planned that every lot commands a most magnificent outlook. The tract is being provided with a system of *avenue* boulevards of rare scenic beauty and making every tract accessible by easy grades for any and all classes of vehicles. At the upper terminal of the main boulevard a beautiful park of native woods provides the most extensive and enchanting outlook to be found anywhere about Eugene. The tract embraces great variety in locations, including rich garden lands perfectly drained slopes suitable for fruit, tracts embracing natural ornamental trees and others clad in primeval forest. The entire tract is most admirably suited to the cultivation of fruit, as is demonstrated by the commercial orchard of Dr. McCormack adjoining on the west and the strawberry gardens of Wm. Wills on the south. The Wills gardens yield \$250 per acre yearly and the McCormack orchard even more. The tract has 5000 gallons daily of the purest spring water and low cost wells. Located in line of most rapid growth of city. Prices range from \$50 per acre up. Terms—1-3 cash, balance long time 6 per cent interest. No city taxes. Prices subject to change.

Phone Red 1461
Room 20 McClung Building

Geo. Melvin Miller

Values will increase here faster than anywhere about Eugene.

Compare our prices with other locations.

Watch Us Grow!!! Better Still! BUY NOW and get the profits.

URE MAN'S WORK
...
Pinham's Vegetable Compound
...
Conrad's TAL POWDER
...
STILE ENOUGH
...
Bristow
...
Set of
...
ON
...
Paint Co