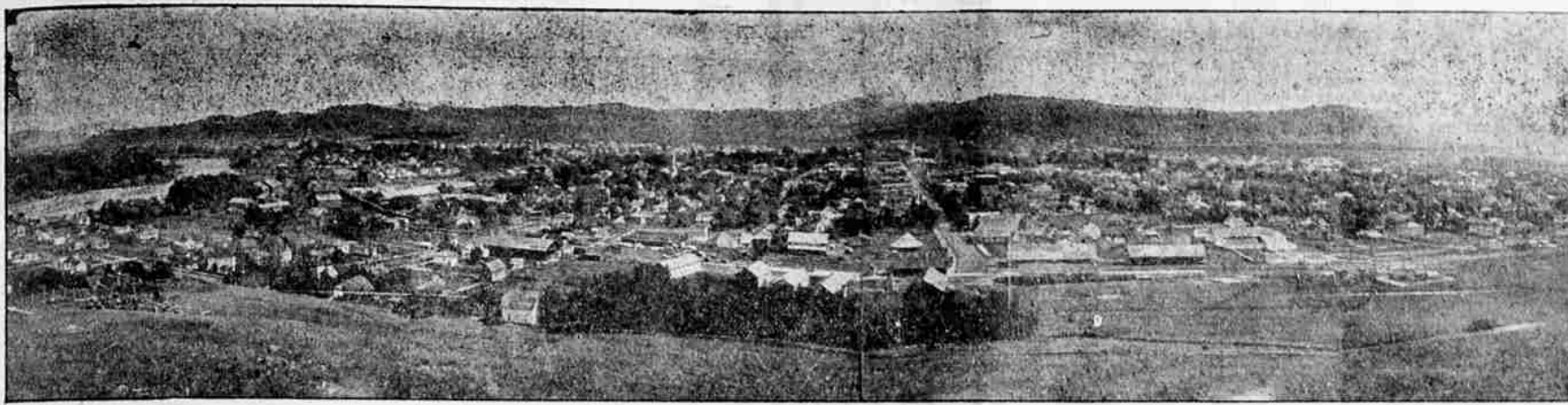


## EUGENE ENTERTAINS BOOSTERS FROM FOUR NEIGHBORING CITIES



CITY OF EUGENE, WHICH ENTERTAINS TODAY SEVERAL HUNDRED "BOOSTERS" FROM ROSEBURG, COTTAGE GROVE, SPRINGFIELD, JUNCTION CITY, CRESWELL, ROSEBURG AND OTHER TOWNS. IT IS A GALA DAY FOR ENTERPRISING CITIZENS OF WESTERN OREGON WHO ARE UNITED IN WORKING FOR A GREATER OREGON

### HUNDREDS OF VISITORS IN THE CITY TODAY

ROSEBURG ALONE SENDS OVER 175 AND COTTAGE GROVE TO MORE

EUGENE COMMERCIAL CLUB AND CITIZENS IN GENERAL VIE WITH EACH OTHER IN MAKING THE VISITORS FEEL AT HOME—A DAY FULL OF GREAT ACTIVITY

Today is Eugene's big boost day. Visitors from Roseburg, Cottage Grove, Junction City and Springfield are here and all have been made to feel at home by the members of the Commercial Club and the citizens in general. The day has been ideal, the sun shining brightly and the air cool and bracing. The visitors, one and all, have expressed themselves as well-pleased with their entertainment here and those who have never before visited Eugene are delighted with the queen city of the Willamette—those who have been here before have always been from the first time they viewed the city's beautiful surroundings and many attractions. The citizens in general have done themselves proud in welcoming the visitors and each has vied with the other in trying to make the excursionists feel at home, all of which goes a long way toward cementing the ties of friendship between Eugene and the cities represented here today by those who have made the trip to accept of the city's hospitality.

This day will long be remembered as one of the greatest boost days ever held by any city in Oregon, and not only will Eugene benefit by the publicity derived therefrom, but the other cities from which the crowds have come will be counted among the state's most progressive communities.

Roseburg Special Arrives. The first delegation, that from Springfield, came over on the Eugene-Springfield local at 11:10 o'clock, and ten minutes afterward the special train carrying 175 Roseburg boosters pulled in. The Eugene people came for the purpose of inspecting Eugene's street paving, and among the crowd were ten of the city councilmen, Mayor Hoover and other city officials. The pavement had been swept clean and portions of it washed off with the fire hose, and when the visitors from the south arrived it was in excellent condition and showed off to splendid advantage to the exponents of municipal improvement from the south. The Eugene Military Band, Mayor Matlock, other city officials, members of the Commercial Club and citizens in general were at the depot to welcome the excursionists. The locomotive was decorated with flags and bunting, and on the side of the tender was this banner: "Roseburg paved street special." As the crowds emerged from the cars, the Eugene Commercial Club members greeted

(Continued from Page One.)

\*\*\*\*\*  
**OFFICIAL FORECAST FOR NORTHWEST**  
 Portland, Or., Feb. 17.—  
 Western Oregon—Generally fair tonight and Tuesday; westerly winds.  
 Eastern Oregon, Eastern Washington and Idaho—Generally fair tonight and Tuesday; colder tonight.  
 \*\*\*\*\*

## FLOODS CAUSE PITTSBURG BUILDINGS TO FALL

Pittsburg, Feb. 17.—With a great roar two brick dwelling houses on Penn avenue collapsed today as a result of the flood waters weakening their foundations. A score of occupants were warned by cracking walls barely in time to escape from the buildings before they fell. One man was injured.

Other buildings are being examined by the authorities to determine their safety.

The rivers are receding slowly, but are expected to be below the danger mark this afternoon. The suffering of the victims is intense, owing to the cold weather and the damage is widespread.

Over twenty thousand men are temporarily out of employment, owing to the flood in addition to the ar-

my out of employment owing to the depression of business, and there is great suffering among them. Thousands of people are living in second stories.

A conservative estimate of the damage is \$2,000,000.

In West Virginia. Wheeling, W. Va., Feb. 17.—Conditions in the flooded district were made worse today by a sudden drop in the temperature and the board of trade is caring for hundreds of families. Many trolley lines and steam railroads are out of commission.

Floods in Indiana. Indianapolis, Feb. 17.—Floods continue in Southern Indiana today, but the cold weather is checking the rise of the streams.

## SUICIDE OF TRESURER OF EDISON CONCERN

West Orange, N. J., Feb. 17.—John F. Randolph, treasurer of the Edison Manufacturing Company, of which Thomas Alva Edison is president, committed suicide in the cellar of his residence today by shooting himself through the head. That the act was deliberate was evidenced by letters left by Randolph, and he is believed to have been temporarily insane. Thomas Edison was one of the first to arrive at the house and prevented Mrs. Randolph from killing herself. She attempted to jump from a window, but after a hard struggle Edison succeeded in pulling her back to safety.

## BANKER MORSE PLEADS NOT GUILTY ON TWO CHARGES

New York, Feb. 17.—Clas W. Morse, former banker and promoter, was arraigned by Justice Dowling today on two charges of grand larceny and misappropriation of funds of the Mercantile National Bank. He pleaded not guilty and asked a postponement, with permission to change his plea if desired. The court fixed his hearing for next Monday.

## MORE SURVIVORS OF EMILY REID

Tacoma, Feb. 17.—A dispatch to the News from Tautoosh light reports that a boat was beached this morning containing the first mate and two sailors of the Emily Reed, wrecked at Tillamook Friday morning. They brought the body of the cook, who died yesterday morning.

The names of the rescued, who are at Seah Bay, are First Mate Fred Zube, Seaman Arthur Jantuko and Knud Ahlestedt. The name of the cook is not known.

The Emily Reed was wrecked off the Tillamook coast almost two hundred miles from where they landed today. They rowed along the coast in an open lifeboat and at one place off the Washington coast were nearly blown ashore. The survivors were without water or provisions. The cook died from exposure.

A revenue cutter will leave here for Seah Bay this afternoon and return with the survivors and the body of the cook.

\*\*\*\*\*  
**STANDARD OIL'S USUAL DIVIDENDS**  
 New York, Feb. 17.—The directors of the Standard Oil Company declared a quarterly dividend of \$50 per share today. This is the same amount paid during the corresponding quarter of last year.  
 \*\*\*\*\*

## STREET SCENE IN EUGENE



## STANDARD PATTERNS ALWAYS RELIABLE

### 1908 Shirt Waists

The best values we ever secured are now on sale in the shirt-waist section; values fully 25 per cent better than is usually sold for a given price.

We have stylish waists for, each ..... \$1.20

A \$2.00 Value, fine dainty embroidery, sheer lawn, well made, each ..... \$1.50

\$2.25 Waist, worth the money, circular yoke of lace insertion, material is fine Persian lawn; each ..... \$1.90

\$3.00 Quality; very elaborately trimmed waist of sheer Persian lawn with lapsels over shoulder, with lace edge, lace and embroidery in front and back; each ..... \$2.50

## Spring Suits



We have new snappy spring suits ready for you. Those exclusive styles which are always in demand and hard to secure are here.

**An Attractive Suit** is one of black and white check suiting, with satin lined jacket, collar and cuffs of black broadcloth edged with gilt soutache braid, nine gored skirt with black broadcloth fold in bottom, the suit ..... \$24.00

**An Exceptionally Dressy Tailored Garment**, is one of light tan suiting, taffeta lined jacket, collar and cuffs, the two folds on the nine pleated skirt are piped with brown, making a very up-to-date stylish suit. The suit ..... \$35.00

## SPECIALS In Coat and Suit Department

**\$10 to \$20 Suits for Less—**  
 Broken line of suits, blue, black and mixed colors; silk or satin, lined jackets; pleated skirts; to close, the suit ..... \$5.00

**Cravenette Coats—**  
 Good colors, good styles, suitable to wear anytime; worth one-third more than we are selling them; each, \$6.50 to ..... \$20.90

**Long Coats About Half Price—**  
 \$7, \$8 and \$9 coats of gray or black cloaking; your choice, each ..... \$5.00

## New Spring Suits By Express



This Spring we're going to show you a stock of **Hart, Shaffner & Marx** Clothes that will surpass anything we've had.

You'll see ready-made clothes that fit perfectly; that are correct in style; honestly tailored; with the substantial all-wool quality in them.

These things are not new in Hart, Shaffner & Marx Clothes, but they are uncommon in ready-made goods. We'll show you any day suits that are worth

\$15 to \$30

## Air Prices

Lonsdale muslin, yard ..... 10c  
 8 1/2c Gingham, yard ..... 7c  
 Twilled Toweling, yard ..... 5c  
 Crash Toweling, yard ..... 10c  
 Durable Laces, yard ..... 5c  
 \$1.25 Shopping Bags, ea. .... 75c  
 15c Dress Ginghams, yard, 12 1/2  
 \$1.25 Slightly Soiled Shirt-waists; each ..... 62 1/2c

## Bull Dog Suspenders

Made in light, medium and heavy weights; will outwear three pair of the other kind. Next time yours gives out, try a pair. The experiment will cost you only ..... 50c

## Linen Pongee

One of the best and most practical wash fabrics for spring is our "Linen Pongee." Made of pure linen in Pongee effect, all colors; it sells for the yard ..... 45c

## Chiffon Panama Suiting

34-inch checked chiffon Panama suiting, new spring shades; small checks, the yard ..... 25c

## Hosiery Section

Boys' 20c Heavy Ribbed Hose made for the active, tearing, romping youngster; the pair, ..... 15c

Girls' 20c fine ribbed 1 1/2c effect dressy hose; the pair, ..... 15c

Ladies' 10c black hose, fast colors, the pair ..... 8c

LADIES' Seamless Hose, fast colors; the pair ..... 15c

## Hats you Will Appreciate

Get under a Gordon, Matlory or Stearns hat; you will look better and feel bigger; they will cost \$2.00, \$3.50 or ..... \$5.00

**Hampton Bros.**  
 Where Cash Beats Credit