

# Half Price Candy Sale

WE WILL HAVE ANOTHER TAFFY SALE

Saturday, Feb. 15th

All Taffies 15c a pound

Koh-i-noor

Peanut Flake 20c a pound

Everyone who has tried our Koh-i-noor home made candies like them. Have you tried them?

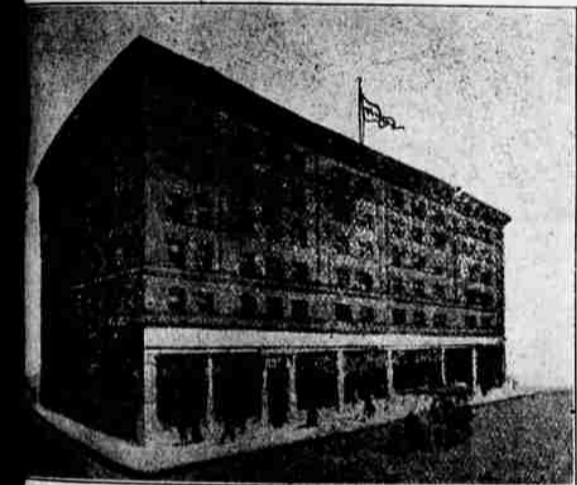
COME WITH THE CROWD

Saturday, Feb. 15th

HULL'S DRUG STORE

E 8th Street.

EUROPEAN PLAN ABSOLUTELY FIRE-PROOF  
Los Angeles' Safest Hotel



THE KING EDWARD  
In the Heart of the City

NO INSIDE ROOMS FIRST CLASS CAFE

A very desirable hotel for all visitors to the city.

First class in all respects

at \$1.00 per day and up.

Write for booklet

TOUSLEY COMPANY, Props.

## Miller's Shoe Store

Most any body can sell you a shoe for summer but

FOR WINTER WEAR GO TO A SHOEMAKER

who understands the leather and knows what he is selling you. We have a Repairing Department, fitted up with everything that's modern in the way of machinery for doing the best of repair work.

MILLER, The Shoe Man.

West 8th street.

The Home of Good Shoes

A FULL LINE OF...

New Granitware just in Stoves, Ranges and Heaters

of the Leading Makes at

S. L. LONG HARDWARE STORE  
50 East Ninth Street

## PORTLAND AND EUGENE HIGH PLAY TONIGHT

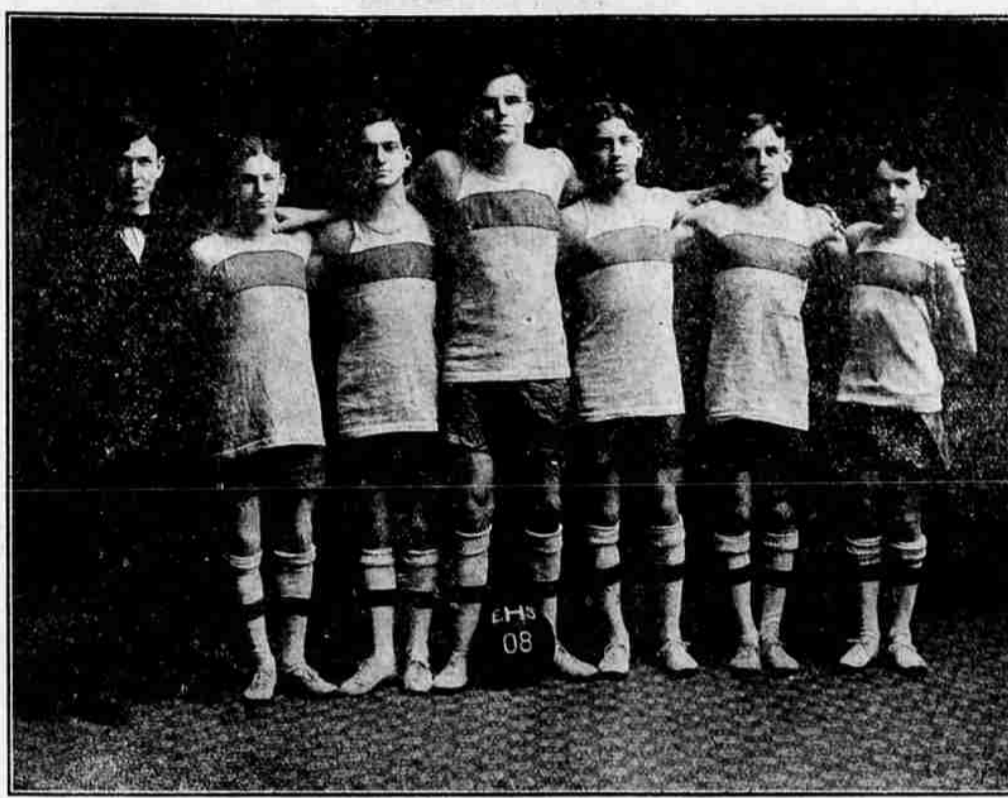
Tonight probably the fastest and most exciting game of basketball that has ever been seen in Eugene between high school teams will be played at the armory between the local high school and Portland. Tonight the team work and expert individual playing will be far above anything that can be called ordinary. Portland has been beaten but once

with victory and even feel that they will do it. However, the difference in strength is not so great as not to require support from the gallery. The high school rosters will be out in full force. The following is the lineup:

Eugene	Portland
Dean	McGee
Cookerline	Tom Ward, Jr
Mitchell	Runyon
C. Watson	Sutton
W. Watson	A. Noyes

After the game the Portland players and rooters will be entertained at a dance. All students are invited. The best of music and a good floor.

Road Will be Rushed.  
(Albany Herald).  
Officials of the Willamette Valley



EUGENE HIGH SCHOOL BASKETBALL TEAM

and that score was so close that little superiority could be shown. She practically has the championship of the lower Willamette valley. Eugene, with the exception of Roseburg, which ranks as a college team, out of the high school class, probably has the best team in the W. O. I. A. league. This is Portland's first game with Eugene and the local boys are very desirous of heading the list

company in this city deny the report that the electric road will not be completed to this city as fast as possible. It is said that the ones in charge of the extension of the road to this city will rush the work, and that the 1000 ties which are now being turned out at the Albany mill will be distributed along the streets in a few days. The ties ordered will be finished by the first of March, and then it is expected that the remaining ties necessary will be ordered.

## EXCELLENT SERMON AT CHRISTIAN CHURCH

When the most and best has been said, there yet remains the unexpressed depths of real worth contained in Dr. Martin's discourse. The one last evening at the revival services was no exception to the rule. With his thoughts clear and mind alert, and with a heart of love, he turned on the searchlight of gospel truth in all its brilliancy, revealing the satanic motives which would lead astray those who are not under cover of the Rock of Ages.

Those out of Christ, who are tossed the compass of the Word of God, and

## OREGON LAND CO

Farm and City Property

FOR SALE

120 acres homestead relinquishment; two million feet of old growth fir timber. Will make a good farm when timber is taken off.

1300 acres, 200 acres of good bottom land, all good grass land; some spruce timber; good house and barns; garden land, some fruit; all open country; splendid stock ranch; good road through the place. On Siuslaw Bay; a bargain at \$14,000.

320 acres of timber, cruises four million feet with five acres of millsite and a large back water slough for log boomage; the best millsite in Lane county right at deep water on Siuslaw Bay; a world of timber back of it; price \$7,500.

4000 acres of timber on new R. R. line now building to Lake Creek; price \$17 per acre; this chance will not be open long.

160 acres on the McKenzie River; will make a good home, price \$1000.

Good 6 room house and pantry, concrete foundation, good well of water; lot 2x169 ft. on Ferry St.; quick sale at \$1,200.

1,000 acres of timber land, cruises 5 to 6 million feet, price \$20 per acre.

1,700 acres of timber, cruises five to six million feet; price \$24 per acre.

Lots and acreage tracts in N W part of town within one to six blocks of Geary School; prices range from \$275 to \$500 per lot; \$50 down balance on two years time at 7 per cent per annum.

Business property in Springfield; income \$90 per month, must sell soon; come and get prices at office.

Oregon Land Company,  
412 Willamette St.  
Mark T. Fleming, Mgr.  
Eugene, Oregon

## MARRIED

At 3:30 o'clock this afternoon at the Christian parsonage, in Eugene, John F. Smith and Miss Freda Castleman, both of Fall Creek, Rev. J. S. McCallum officiating.

## SENSATIONAL FALL

In Prices on Pianos, Pianolas and Organs at the Great Retailing From Business Sale of the Eilers Piano House.

Many Eugene people are taking advantage of the factory prices quoted. If you have any use whatever for a piano and can make any kind of fair payment—\$8 to \$10—you owe it to yourselves to see us now. But you have only a short time in which to make your selection, as we have promised Messrs. Stevens and Hull, our successors, to vacate the premises within a few weeks.

In this magnificent stock you will find the best pianos manufactured—Weber, Sohmer, Kimball, Lenter, Story & Clark, Marshall & Wendell, Schumann and many others. Just think of buying a piano of standard make, one that has been on the market for more than fifty years and usually retails at \$400, for \$248. Just think of a piano guaranteed for ten years being offered for \$196. And, remember, you take no chances in selecting a piano at this closing out sale. You are protected by a double warranty. You get a written guarantee from both the factory and Eilers Piano House.

Your opportunity to purchase a fine instrument at almost wholesale cost is here. Avoid regrets by making your selection now.

Open evenings.  
EILERS PIANO HOUSE,  
24 West Seventh Street,  
T. H. Comte, General Agent.

## At Otto's

Valentine boxes from 5c up. \$14

## ANNOUNCEMENT

J. M. Howe and J. W. Buoy have opened a real estate office in the building with J. A. Maurer, No. 542 Willamette street, where we would be pleased to have all old friends who have property to sell, both farm and city, call and list same with us and we will do our best to sell same.

HOWE & BUOY,  
542 Willamette Street,  
Seattle, Wash. They always pay the highest market price.

without the Pilot who calls the sea of life, will sooner or later discover that their earthly vessel is sinking in an unknown sea amid gloom and despair and without hope of rescue.—See Acts 4:12. What a contrast is found in those who place their trust in the Lord. The weakest and the strongest are on an equality in Him because He is about them and is their strength. The dark clouds of sorrow, the rains of hatred, and the tempests of distress avail naught; the foaming billows of falsehood dash in vain and break in confusion.

"Where is my trust?" should be the question of every one of us. Last evening a number of persons went forward and showed wherein they place their trust, thereby making the whole number of accessions 177.

Be sure to come tonight and hear a sermon which is pronounced by many to be the greatest of Dr. Martin's sermons: "The Ingrateful Word." Remember the time—7:30 this evening. Splendid music and singing under the leadership of Professor Davie.

## ASK RECEIVER FOR MUTUAL RESERVE LIFE

New York, Feb. 14—State's Attorney General William S. Jackson announced today that he had decided to ask for the appointment of a receiver for the Mutual Reserve Life Insurance Company. The value of certain liens imposed by its policies has been questioned by the authorities.

## At Otto's

Valentine boxes from 5c up. \$14

## WOLF DOGS LOST

While hunting wolves in the Spencer Creek country Thursday R. A. Booth lost two valuable dogs, one a white dog with black and tan spots and the other a red bitch. They struck the trail at 8 o'clock in the morning and have not been seen since by the owner. Any one knowing their whereabouts will confer a favor upon Mr. Booth by telephoning him.

## BOARD OF FIRE DELEGATES

A special meeting of the Eugene board of fire delegates will be held in Fremont's hall Saturday evening at 7:30 o'clock for the purpose of considering the matter of allowing the band the use of the hall.

## APPRENTICE GIRLS WANTED

Several apprentice girls wanted at Bolton & Jenkins' millinery store, successors to Shumate.

## NEW TODAY

FOR SALE—A second-hand Petaluma incubator, 126-egg capacity; practically new; also brooder. Phone Farmers 114. \$21

WANTED—A girl to work in the candy factory at Otto's.

FOR SALE—Buff Orpington eggs, \$2 for \$1. W. B. Hampton, 1102 Columbia avenue, corner 19th st.

# EUGENE RACKET STORE

LOCAL AGENTS FOR PICTORIAL REVIEW PATTERNS

Pictorial Review Patterns are the only patterns provided with a cutting guide and an instruction guide furnished with all new patterns. Every purchaser of the new Pictorial Review Patterns receives a cutting guide, and no other patterns are provided with these guides.

Subscriptions taken for Pictorial Review Magazine, \$1.00 per year. A free pattern with each subscription.

Eugene Racket Store  
W. J. Baldwin, Prop.  
35 E. 9th St., Eugene, Oregon

## Nothing But Light

HUNTER & WILLOUGHBY

Have installed an up-to-date Gas Lighting, Cooking and Heating Outfit, and have a competent Gas man to talk GAS to you. We are going to make a specialty of lighting business houses with a Gas Light you can depend on. Come down to our store and see what Gas will do. We are always glad to explain light to you, either Electric or Gas.

GAS AND ELECTRIC SUPPLIES

516 Willamette St., Eugene, Or.

ELI BANGS J. H. WEST C. P. BARNARD EARL McNUTT

## BANGS LIVERY CO.

Livery, Feed, Stage and Sales Stables

Cabs Always Ready  
First Class Turnouts of All Descriptions

## ..STAGES..

MCKENZIE STAGE leaves Eugene at 5:30 a. m. Stages do not call at private residences but will call for baggage if notified the day before.

EUGENE-FLORENCE STAGE—A daily stage leaves Eugene at 6 a. m. for Mapleton, close connection by steamer for Florence and vice versa

Stage Phone Main 22—Livery Phone Main 21

## BRODERSBROS. NEW MARKET

We are now located in our new building across the street and we will be pleased to see you.

## ..SPECIAL..

5lb Can Choice Lard for 65c

Brills and Stews Strictly Cost Price

West 8th Street. BRODERS BROS. NEW MARKET

## MERCHANTS BANK EUGENE, OREGON

Does a General Banking Business on Conservative Lines

S. S. SPENCER, President.  
L. H. POTTER, Vice Pres.  
F. N. McALISTER, Cashier.

Cor 7th and Willamette

