

Agents Warner's Red Fern and Rust Proof Corsets, Gossard Front Lacing and Nemo Self Reducing, Ladies' Home Journal Patterns, Niagara Maid Silk, Centurie Gloves, Woyne Knit Hosiery, Colonial Drapery Fabrics



S. H. Friendly, The Leading Store \$12.50

Will you pay \$15 for a suit that has all the character and tone of the tailor's usual \$30 production? Well, that's just what we will give you here for \$15, with our guarantee as to fit and quality of materials. Hundreds of beautiful fabrics in nifty models to choose from. Be sure and see these suits at \$15. You'll like them.

Children's Wash Suits—blouse and Buster Browns, in plain white and colors, at **50c to \$3.50**.

Blouse Waists, in all sizes; immense variety of colors, 50c and 75c values.

Until Saturday night we offer at this price a line of Ladies' and Misses' Suits, worth up to \$18.00; Shepherd Checks, Homespun Checks and Colored Serges and Diagonals, all nicely made, well trimmed and satin lined.

- Silks—85c Shepherd Check, special at **59c**
- 50c White Goods, all 50c White goods, at **38c**
- Children's Romper Suits, 65c quality, **50c**; 50c quality **39c**
- Gingham Underskirts, to close, at **50c**
- 75c Hair Crowns, **50c**; 50c Hair Crowns **39c**
- Parasols—Big assortment for children, at **25c**
- Ladies Parasols—A big showing of the Pongee effects.
- Seconds, Misses' & Children's Hosiery, 25c vals., 2 pr. **25c**

LABORERS SAY POLL TAX MUST BE ABOLISHED

Will Daly, of Portland, president of the Oregon State Federation of Labor, who has been in the city several days on business, to a Guard representative today made the following statement regarding the work of the Federation:

"The poll or head tax in the state of Oregon must go. The State Federation now has before the people an initiative petition, the purpose of which is to amend the constitution that it will be unlawful to raise revenue by this infamous and un-American method. This amendment is as follows:

"Proposed Amendment to Article IX of the Constitution of the State of Oregon, to be designated in the Constitution as Section 1a of Article IX, of said constitution.

"Article IX. of the Constitution of the State of Oregon shall be, and hereby is, amended by inserting the following section in said Article IX, after Section 1 and before Section 2, and it shall be designated as Section 1a of Article IX.

"ARTICLE IX.—Section. 1a.—No poll or head tax shall be collected in the State of Oregon and no bill regarding taxation or exemption throughout the state shall become a law until approved by the people of the state at a regular election; none of the restrictions of the constitution shall apply to measures approved by the people declaring what shall be subject to taxation or exemption and how it shall be taxed and exempted, whether proposed by the legislative assembly or by initiative petition; but the people of the several counties are hereby empowered and authorized to regulate taxation and exemptions within their several counties, subject to any general law which may be hereafter enacted."

"The State Federation," continued Mr. Daly, "was prompted to propose this amendment by the action of the last general assembly, which created a tax commission, whose duty is to report a revision of the tax system. The legislature also decided to submit to the referendum two amendments to the constitution which, if adopted, will make it possible to exempt certain property from taxation.

"While the Federation endorses and concurs in the amendments which will make exemption possible, it is believed that the measures will not be complete unless the amendment is also adopted, which will safeguard the taxpayers in so far that any exemption shall be approved by the people at a regular general election before it can become law.

"The Federation" also has begun the circulation of petitions to place

the Employers' Liability Law on the ballot. This proposed law is a measure which will require employers to safeguard the lives of employees engaged in hazardous occupations.

"When this last-named measure was before the last general assembly it was opposed and defeated through the efforts of the Employers' Association. The attitude of the employers at the present time is more favorable. In fact, there is a strong wave of favorable consideration of liability laws all over the country, the Washington Lumber Manufacturers' Association at its last convention, having adopted resolutions declaring it necessary that a fair and honest law must be enacted looking to the better protection of employees.

"The National Manufacturers' Association, at its late convention, also expressed itself in favor of a liability law which shall be national in its scope. And when this convention, which was composed of employers from every section of the United States, voluntarily goes on record as favoring liability laws, the working people of the state of Oregon feel that our proposed law is receiving its strongest endorsement.

"Both of these petitions are now being circulated throughout the state, and are meeting with enthusiastic support, and we are gratified that many employers are showing their unselfish interest in the welfare of their employes by offering their signatures to these petitions."

HOUSE BURNED NEAR DONNA SATURDAY NIGHT

Farm Residence on George Yarnell Place Destroyed — Other Notes

Special Correspondence.
Donna, April 18.—Spring seeding is about over in this vicinity. Considerable grain has been sown and a large crop may be expected. The weather has been ideal this season for farming, and the farmer has made good use of the sunshine. As the farmer sows so shall he reap. Grain sown in wet land is likely to produce much instead of wheat or oats.

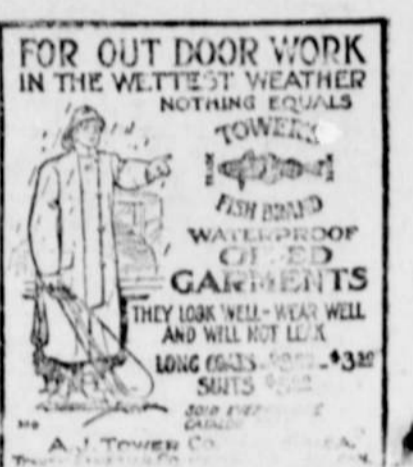
Quite a conflagration occurred on Saturday evening on the Geo. Yarnell place about two miles south of Donna. The house was the victim of the wrath of the flames. The fire and smoke could be seen for miles around. The damage was not very great, perhaps \$500.

Frank Spores has received a large wood saw from the Portland hardware firm of Mitchell, Lewis & Staver Co., with which he intends to cut cord wood this summer.

Rev. Geo. Ramsey will preach again at the Donna school house next Sunday, April 24, at 11 a. m. and 7 p. m. The Sunday school at 10 a. m. should not be forgotten.

Mrs. Lemon has built a new porch in front of his store to take the place of the canvas awning.

Mrs. Getchell, state deputy for the R. N. A., accompanied by Mrs. Laura



HARRIMAN LINE IS

RUSHED TO HARNEY

Race for Interior Oregon Starts — Vale Is Now the Vantage Point

Vale, Or., April 15.—Determined on being the first railroad into Harney County, the Harriman interests jumped into Vale this morning with a force of 100 railroad laborers and started construction work on the Oregon & Eastern, the survey for which extends westward across the state from this point to a connection with the Natron-Klamath line at Odell.

Material yards have been established in which 90 car loads of ties are already piled up, in addition to several miles of 70-pound steel rails. Engineering parties are now setting the grade stakes along the line of the survey and are camped as far west as the Harper ranch, 25 miles from Vale in Malheur county.

Malheur Canyon First Point Hit. It is believed here that energies

will be devoted at first to covering the survey in the Malheur River canyon, where engineering parties, working for the Boise & Western, said to be a Hill road, have been operating for some time.

The construction of 150 miles of road will put the Oregon & Eastern "in the clear." That is, it will take the road through the Malheur canyon and into the Harney valley to a point on Malheur Lake. From there to the connection near Odell, the country is more or less open and the danger of interference by rival lines is not a matter of serious consideration. It is reported here that work on this 150 miles will be prosecuted vigorously this summer.

"It is Harney Valley or bust," is the expression used here today by Engineer Ashton, who has been looking after right-of-way matters for the company. Engineer F. S. Osborne is now in Pocatello rounding up railroad laborers.

The force at work today has laid the first mile of track that will be needed to connect the Oregon Short Line branch from Ontario to this point with the construction work on the survey of the Oregon & Eastern.

Tracks are being laid in order to get materials on the ground expeditiously, while a switch is under construction to facilitate the handling of materials in the yards.

OREGON ELECTRIC PREPARES TO EXPAND.

Portland, Or., April 16.—The preliminary purchase in what is believed to be a move toward the upbuilding of the warehouse and factory district in the South End was completed yesterday, when the Oregon Electric became the owner of three full blocks adjoining the company's terminal property on the south.

In addition to this purchase, made known by the recording of the deeds, it is said that at least three prominent real estate firms in Portland have been quietly working of late in the endeavor to tie up with options a tier of 10 or 12 additional blocks between the Oregon Electric and Southern Pacific rights-of-way and connecting up with the property transferred yesterday. The latter deals have not yet been closed.

The completed deal represents an expenditure of about \$360,000, if the

prices at which the owner of the major portion of the three blocks, William K. Smith, has been holding them, has been paid. The full consideration in the transfer is not given in the deeds, \$10 being named.

In addition to building up the South End warehouse district, a larger share of the Willamette Valley freight traffic will come into the Oregon Electric terminals with the extension of the company's lines now in prospect. The surveys for the extension to Albany and to McMinnville were completed about the first of the year, and were taken to New York by Manager Talbot, with the expectation that the construction work should be ordered at once.

The sale of the road, it is believed, has only delayed the definite announcement of intention to build this year, for the franchise in the valley towns are being sought and there is every indication that the work is to go forward rapidly.

A. T. Warner and wife and Mrs. E. F. Reed of Denver, arrived in Eugene last night. They are touring the country and have gone through California.

Have You Bought Your Selz Royal Blue Shoes Yet?



Selz Royal Blue No. B 122 Fine patent colt button, dull top, Hito last, very dressy \$5.00

That's going to be the question that will be asked all over this town before long. Buying shoes isn't the most important thing you do; but being that sure you get big value for you money is one the important things

Selz Royal Blue Shoes

are value-for-your-money shoes, the fine quality of leather, the smart new style, the perfect finish, the comfortable ease of fit, the durability of wear; these are the things you get when you buy these shoes. And the best of it is you can be sure of getting them when you find the Selz mark on the shoe; that's what its there for; to give you that assurance.

Come in and find out how good shoes can be when some first class maker tries to make shoes as good as he can. For men, women and children



SELZ ROYAL BLUE SHOE STORE
WILCOX BROS. Cherry Block, 457 Willamette

