

Shop Where the Crowds Buy

How true these words prove will be demonstrated

Sept. 5 to Oct. 11, Inclusive

During the great Merchandising event

PROSPERITY DAYS

Watch for full particulars in next week's issue showing how to buy new Fall and winter merchandise at after season's **PRICES**

People's Cash Store

"SHOP WHERE THE CROWDS BUY" **SALEM** "SHOP WHERE THE CROWDS BUY"

DEMAND IN OTHER STATES

states and two foreign dis- after E. B. Fitts, U. S. A. C. dairy field specialist to dairy cattle at various coun- district fairs. He is wanted state fairs of Utah, Massa- and Connecticut. He is demand at Vancouver and

Victoria, B. C. His Oregon work makes acceptance of more than one or two of these impossible.

BUTTER FAT RATE VARIES IN TESTING CONTESTS

Butterfat content varies from 3.8 per cent to 6.3 per cent in the pro- duction of cow-testing association

for July, according to the official report by E. B. Fitts, in charge for O. A. C. The high figure comes from "Pennie," the grade Jersey owned by L. A. McCormack of Tillamook, who broke the association record for high production the month before. Pennie is second for July with 105½ pounds of fat, and her herd mate, "Pal" is first with 107.12 pounds

INDUSTRIAL RE-VIEW OF STATE

Portland—Dried buttermilk for feeding poultry and stock made its official debut in Portland last week when the Portland Flouring Mills put on a huge chicken dinner at several of the hotels. All of the birds were fattened on the new product, which is being turned out by the Olympic Cereal mill, recently completed. This will provide a market for a liquid which has generally been regarded as 90 percent waste.

Redmond—Pencils are to be the product of the newly incorporated Redmond Juniper Manufacturing company, which will establish a factory here. This is the second concern to organize for the purpose of utilizing juniper wood in Central Oregon.

Portland—Automobile tires for distribution in this territory are to be stored in a two story concrete warehouse to be constructed here by the Goodrich Rubber Co. of Akron, Ohio. A piece of property has just been leased as a building site.

Albany—Oregon has a new world's champion Jersey cow, Jean Marigold of St. Mawes, which is on the farm of Robert L. Burkhart, near Albany. It has just recently testde 666.25 pounds of butterfat and more than 12,000 pounds of milk, the world's record for any cow 13 years or over.

Portland—The first of five pontoons for the new drydock being constructed for the public dock commission has been launched. With the great pumping capacity specified in the plans it is estimated that a 12,000 ton ship can be lifted in less than 30 minutes after the blocks have set.

Toledo—Sunflowers for silage, a new crop in Lincoln county, are showing up splendidly. In Linn county also prospects are for larger crops of these than of corn. Growing sunflowers is still in the experiment stage.

Portland—Phonograph manufacturing has become one of the city's promising new industries. A new development in this line is the purchase of the Pacific Phonograph company's plant by the Stradivara Phonograph Manufacturing company. The latter concern has been incorporated under the laws of Delaware for \$5,000,000 of which \$600,000 is paid in. The officers will continue to be Portland men.

Marshfield—The first exhibition of Oregon made goods ever held here is to take place next month under the auspices of the Catholic church. The displays will cover the products of the entire state.

Eugene—An example of the extraordinary number of diversified woods grown in forests of the state is found in a report of a forest examiner in this territory. In the Cascade national forest, within a distance of 12 miles he found 14 species of coniferous trees. They included western yellow pine, western white pine, sugar pine, lodge pole pine, knob cone pine, Douglas fir, western hemlock, incense cedar, western red cedar, Engelmann spruce, white fir, red fir, mountain hemlock and western yew.

Portland—Wheat exported from Portland during August was responsible for \$3,288,204 of the total figure of \$4,800,000 for all exports from this city. The amount of wheat shipped during the month was 1,262,919 bushels. August tonnage nearly doubled the records for 1919.

Salem—Another lumber mill is to be added to those of the state as soon as the Pacific Western Lumber company, just incorporated, can place one in operation. It is to be established near Glendale in Douglas county.

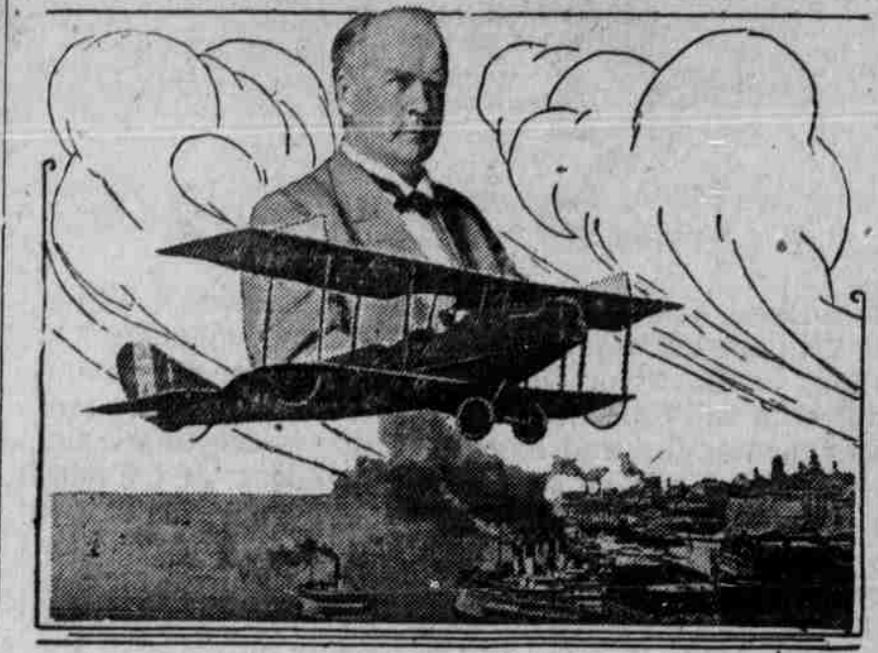
Portland—A brand new automobile disc wheel is being put on the market by Wilkinson Brothers, a local firm. The advantage of the Portland product is that it can be adapted to any wheel, a quality not possessed by those being made in the east.

Salem—Salem has been designated by the California-Oregon Paper company as the most suitable location for the sulphite mill, which the concern proposes to operate in the Pacific Northwest. It had originally been planned to erect the plant in Vancouver.

Salem—Construction work on what is said to be the largest prune drier in the Northwest is now under way in West Salem, where Bruce Cunningham is erecting a plant 100 by 200 feet in dimensions. When complete it will be able to care for 2000 barrels of prunes daily.

Portland—Portland's export trade in the fiscal year ending June 30 amounted to \$42,812,891. This city

Sky Flights for Dry Fight, Watkins' Plan



Aaron S. Watkins, prohibition candidate for president, will make sky flights to carry on his dry fight in his campaign. From Germantown, O., home of the candidate, to

Ashtabula, O., was the first flight by airplane by Watkins. Only a pilot accompanied the candidate in a privately owned ship. An extended campaign tour has been planned.

outranked Wilmington, N. C., Charleston, S. C. and Los Angeles. The Columbia river salmon pack this season totalled 600,000 cases.

SCORING CONTEST ON AT AGRICULTURAL COLLEGE

Dairymen wanting to learn more of the points in making good butter may send samples for scoring to V. D. Chappell, in charge of the educational butter scoring contest, O. A. C., Corvallis. Samples for the next scoring must reach the college not later than September 15.

Master Trucks

Extra strength, extra power and extra service is built into every Master Truck. Examination shows it; performance proves it. Compare its specifications with those of any other truck of similar rating. Horse-power, frames, springs, axles, compare vital facts like these, then draw your own conclusions. 1½ to 6 tons.

"Master of the Load on any Road."

Marion Automobile Co.

Opposite Marion Hotel Salem, Oregon

"NOW-A-DAYS" says the Good Judge



A man can get a heap more satisfaction from a small chew of this class of tobacco, than he ever could get from a big chew of the old kind.

He finds it costs less, too. The good tobacco taste lasts so much longer he doesn't need to have a fresh chew nearly as often.

Any man who uses the Real Tobacco Chew will tell you that.

Put up in two styles

W-B CUT is a long fine-cut tobacco RIGHT CUT is a short-cut tobacco

Weyman-Bruton Company, 1107 Broadway, New York City



The "RED CROWN" sign stands for an all-refinery gasoline.

STANDARD OIL CO. (California)

The Gasoline of Quality

Oregon Journal

"The Home Paper of the Oregon Country"

All Europe is in the process of reconstruction. America is readjusting itself to peace time conditions. A national political campaign is approaching the critical stage.

You desire complete and accurate information on what is happening at home and abroad. Let THE OREGON JOURNAL give this service to you.

Your home town newspaper supplies you with the news of your immediate locality, and it gives you the highlights of the world about.

THE OREGON JOURNAL brings to you each day the detailed account of those national and world happenings which its wider news facilities provide.

For \$2.50 you can get THE OREGON JOURNAL DAILY AND SUNDAY until February 1, 1921. Fill out the accompanying coupon and mail it today:

The Oregon Journal First in News Reviews Features And Fun

The Oregon Journal, Portland, Or. Gentlemen:

Please send The Oregon Journal (daily and Sunday) to the following address:

Name

Street

City

Enclosed find \$2.50, payable in full until Feb. 1, 1921.