



50% More Mileage

In Boston, Green & Swett Co. watched the Miller records on some hundreds of large cars. They found that Millers increased the former tire mileage from 50% to 75%. They eliminated blow-out troubles. And only six tires in each 1,000 proved disappointing to the users.

\$1,000 Daily To Reduce Your Tire Cost

The Miller Tire mileage, now discussed everywhere, is not an accident.

Over \$1,000 daily is spent in tests and inspections. Fifty inspectors guard against defects.

Every lot of tread stock is first vulcanized and tested in the laboratory.

Over 1,000 tires yearly are worn out in factory mileage tests.

Every tire is signed by maker and inspector, and both are penalized if a tire falls down.

Highly-paid experts spend their years in making betterments.

Mark the results

The Miller Tire is now talked everywhere. It is today's sensation.

It is winning countless contests where a score of makes are brought into comparison.

In the factory tests—radical rear-wheel

tests—Miller cords last year averaged 15,000 miles.

The new Miller treads, in these tests, outwear the best of others by 25%.

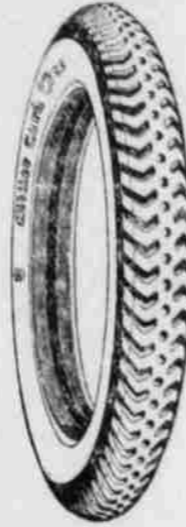
Defective Miller Tires are a rarity. Some large Miller dealers last year had not a single adjustment.

If you don't know these new-day tires you should find them out. They are saving millions of dollars to motorists.

Get one and watch it. It will give you new conceptions of a modern tire.

Tread Patented

Center Tread smooth with suction cup, for firm hold on wet asphalt. Geared-to-the-Road side treads mesh like cogs in dirt.



Miller Tires

The Most Talked-about Tire in America

Cords or Fabrics

Geared-to-the-Road

Registered U. S. Pat. Office

INDEPENDENCE GARAGE

EVERY COMMUNITY IN STATE IS ORGANIZED

With practically every community in Oregon organized the intensive canvass throughout the state in the Oregon State Chamber of expansion movement, which began several weeks ago, will continue during June and July.

The work in connection with the expansion movement, which began several weeks ago, will continue during June and July.

Twelve men, composing six teams of two men each, will direct the intensive organization work simultaneously in six different sections of the state. They will be assisted by 80 community executive committees appointed during the state-

wide survey conducted preliminary to the intensive organization work.

Leading men in every section of Oregon are affiliated with the State Chamber in the capacity of committee chairmen and members in the movement to raise a budget of \$450,000 (\$150,000 a year), covering a three year period with which to carry on the development work of the State Chamber. More than 200 endorsements have been received from these men approving the expansion movement and citing the need for such an agency as the State Chamber to take the initiative in development problems affecting the entire state.

Of the total sum to be raised, \$180,000 (\$60,000 a year), covering a three year period will be raised

in Portland the week of June 9th, 10th and 11th. The remainder of the budget totaling \$270,000 (\$90,000 a year), covering a three year period will be raised in the 36 counties outside of Portland.

Tillamook—The dairy industry in this section is seriously hampered by the lack of sufficient gasoline to run the milking machines. Cows cannot be milked by hand because of the scarcity of labor.

Hood River—This is Oregon Products week here, with displays of Oregon-made products featured in the displays of all store windows. Cash prizes for the best window displays will be distributed at a dinner Friday evening.

OREGON AFFAIRS TERSELY TOLD

Portland—Instead of paying mill prices for boxes, fruit growers of the Yakima valley will build their own. Construction has started and machinery is arriving here for a box factory in the Kenton Industrial district which will manufacture 12,000 apple boxes a day, working two shifts. For the purpose of operating this factory and reducing the cost of packing apples, the growers have organized the Bede Lumber company, of which they are owners and managers.

Bend—The Shevlin-Hixon and Brooks-Scanlon Lumber companies the two largest industries of this city, will help solve the housing problem by furnishing lumber to their employees and residents of this city for home building purposes at a price less than that received for their product f. o. b. cars at their own mills. The lumber companies will also finance the building of homes and let employees pay for them by deducting a small sum from each month's wages. The plan has just been placed in effect and lumber is now being dealt out under these conditions. The 1920 payroll for these two mills alone will be close to \$3,000,000, and with their present holdings of timber in this region the mills can operate at this capacity for 30 years.

Bend—Though it looks exactly like rotten cordwood and would be passed upon as valueless by a casual observer, a class of timber that has been moving out of here in carload lots bring a high price for a peculiar purpose. The timber in question is seasoned—too well seasoned it appears—juniper, on its way to Japan to be made into pencils. The rotter of the core of the log is, the softer is the surrounding wood, and the better pencil stock it makes, so the Japanese manufacturers like it that way. Though the use of weathered juniper for pencil stock is still in its experimental stages, large quantities of this wood have been moving out of here for shipment to the flowery kingdom on steamships running from Portland to the Orient.

Pittsburg—The vast iron resources of Columbia county are being developed for the first time successfully by the first unit of a smelter which has started operations near here.

Portland—A fool-proof davit, by means of which life boats can be lowered from a sinking ship under the control of one man instead of several, is to be manufactured at a plant to be built either here or at Astoria by the United States Marine Equipment company. The device has been patented, and the company, which was recently incorporated, plans to invade the market on every seaboard of the country.

Marshfield—A new market for Port Orford cedar has developed in the far east, where the resourceful Japanese manufacturers convert it into pencils. This timber in eight-foot bolts is moving out of here in considerable quantities by rail and water, destined for Japan.

Klamath Falls—Hope of the development of the oil resources of this section has been aroused by the arrival here of Captain Rathbone of the Waldport Oil company, who is looking over the local field for his company. The Waldport Oil company operated extensively at Waldport, Ore., and of late has been active in Wyoming.

Lebanon—An unusual harvest for a farm will be that reaped by H. F. Davidson of Hood River, who owns a large ranch near here. He is going to install a sawmill of 20,000 feet daily capacity on his farm in order to harvest his fir trees.

McMinnville—Seed is being furnished to growers at cost by the A. Rupert Co., Inc., which is building a new fruit cannery here. The main building is completed and the plant will be in operation by the beginning of the canning season.

Portland—Thousands of dollars

PEARL OIL
(KEROSENE)

MAKES SUMMER COOKING COMFORTABLE

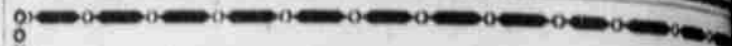
STANDARD OIL COMPANY (CALIFORNIA)

will be saved by the Northwest Bridge & Iron company through the use of electric welding in seven tank ships of 12,000 tons capacity which this company has contracted to build. Tankers of this class require about twice as much riveting as the steel cargo carriers formerly built at the plant. Welding will be substituted for rivets in a large part of this work.

Rockaway—Surf bathers chilled by the waters of the bay may restore their circumscribed dance pavilion which is under construction here. A movie is so going in across the street from the church.

Burns—An attempt to reach the lake of oil which is believed to underlie Harney and Malheur counties is being made by G. W. Howell, who has commenced drilling operations near here.

Portland—The Peninsula lumber mill here, now producing 100,000,000 feet of lumber a year, will just double its capacity when expansion already in progress is completed. Three thousand lineal feet of bulkheading, 40 feet wide, now surround a tract that is being filled by a suction dredge. Upon this site will be built a complete new sawmill, kiln and dock for ocean vessels.



Stay Young

As the years overtake you, reading becomes increasingly difficult without proper glasses. Our Lenses make reading a comfort; prevent wrinkles from eyestrain and preserve perfect and clear vision. Come to us and have your eyes examined and your glasses made—All work guaranteed.

Hartman Bros. Co.

JEWELERS AND OPTICIANS

SALEM, OREGON

"Bear this in Mind"

says the Good Judge

You not only get complete tobacco satisfaction from a little of the Real Tobacco Chew—But it costs you less. The rich tobacco taste lasts so much longer than the old kind—you don't have to have a fresh chew nearly as often.

Any man who uses the Real Tobacco Chew will tell you that.

Put up in two styles

RIGHT CUT is a short-cut tobacco
W-B CUT is a long fine-cut tobacco

Weyman-Druton Company, 1107 Broadway, New York City



speed!

We are particularly equipped to give you rapid long distance service.

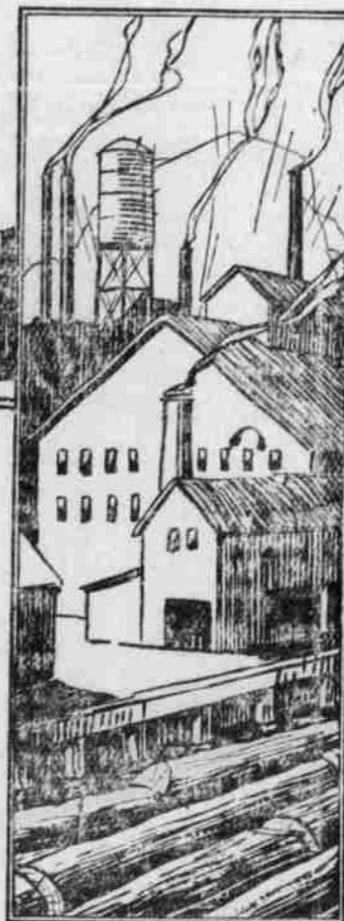
Why waste time in getting calls through when this accurate, courteous service is at your instant disposal?

Over any phone. Just ask for Northwestern Long Distance.



Don't ask for Long Distance Say—

NORTHWESTERN LONG DISTANCE



The G-E Range Saves Food

The comparison shown here is not mere theory—it is based on actual tests. Figure this saving out in money at present prices of meat. See what it means to your pocket-book.

Cooked by Electricity: 7 lbs 6 oz

Cooked by Coal: 9 lbs 4 oz

Weight of Raw Beef: 9 Pounds

MOUNTAIN STATES POWER COMPANY