

PROFESSIONAL COLUMN.
SWOPE & SWOPE
 Lawyers
 I. O. O. F. Building
 Independence, Ore.

THE PALACE
 Main Street
 Open day and night—we serve meals and lunches at all hours. Try the famous Mt. Hood Ice Cream. Also barber shop in connection.

FLETCHER & BARRICK,
 ATTORNEY'S
 Cooper Building
 INDEPENDENCE, OREGON

TIME CARD ON VALLEY & SELTZ RAILWAY.
 Effective Sunday June 29th
 The Valley & Siletz Railroad will run a train leaving Independence at 7.45 a. m. going through to Camp One arriving there 10 a. m. Leaving at 4.45 p. m. arriving Independence at 7 p. m. leaving at 7.25 p. m. for Hoskins. Sportsmen will have an opportunity to whip the Luckimute.

ON OLD ACCOUNTS
 WE GET RESULTS
 WE REPORT RESULTS
 WE REMIT RESULTS
 WE PAY THE EXPENSE
 WE TAKE THE BLAME.
 KNIGHT ADJUSTMENT CO
 McMinnville, Ore
 Successor to
 YAMOREG COLLECTION AGENCY.

WILLARD
 STORAGE BATTERY STATION
 We sell, Rent and Repair Batteries—OUR REPAIR WORK GUARANTEED.
 418 Court Street. Salem.
 Phone 203

Ask Your Dealer **REMINGTON UMC**
Remington UMC
 Grand Prize Modern Firearms & Ammunition
 Write for Catalogue
 THE REMINGTON ARMS U.S. CO. INC.
 Springfield, Mass.

Get the Genuine and Avoid Waste
Morgan's SAPOLIO
 Scouring Soap
 Economy in Every Cake

SKINNER & WHITE
 LABOR AGENCY
 DO YOU WANT HELP?
 We furnish promptly Farm Help, Milkmen, Wood Cutters, Mill, Camp and Kitchen Help.
 Phone Broadway 3205

MURCH RUSSELL, M. D.
 Physician and Surgeon.
 Office and residence over Independence National Bank

Try the Sale Studio for **PHOTOGRAPHS**
 384 State Street

I WILL GIVE \$1000
 IF I FAIL TO CURE ANY CANCER OR TUMOR I treat before it POISONS deep glands or attaches to BONE Without Knife or Pain
 No PAY Until CURED
 WRITTEN GUARANTEE
 No X Ray or other swindle. An Island plant makes the cure
 ANY TUMOR, LUMP or SORE on the lip, face or body long is CANCER. It never pains until metastasis
 120-PAGE BOOK sent FREE. 10,000 testimonials. Write to
Any LUMP in WOMAN'S BREAST is CANCER and always poisons deep glands and kills quickly
 One woman in every 7 dies of cancer—U.S. report
 We refuse many who wait too long & must die
 Four cured at half price if cancer is yet small
 Write Dr. & Mrs. Chamley Co. for the Book
 3 Great Cancer Specialists 40 Years
 Offices 57 Sixth St. San Francisco, Cal.
 MAIL THIS To Some One with CANCER

STATE NEWS IN BRIEF.

Amity.—The Amity drug store was broken into Monday night and all the jewelry, valued at about \$500, was stolen, besides several cameras, flashlights, cigars and what small change was in the till.

North Bend.—The annual report compiled by City Recorder Maybee shows that 68 arrests were made in the city in 1919. Of this number 21 were for speeding, 16 for drunkenness, 10 for having liquor in possession, 7 for minors in pool halls, 6 for disturbing the peace and 8 for other offenses.

Salem.—A state game and fish commission composed of seven members, as proposed following a conference of the fisheries industries and game committee of both houses of the legislature held here Monday, has the indorsement of Senator John Gill, of Portland, according to a letter received from him at the executive offices.

Bend.—To make the pay for the work of census taking sufficient to insure a thorough enumeration of residents of this city, the Bend Commercial club directors have decided to pay 4 cents a name in addition to the 4 cents already offered by the government. Unofficial enumerators may be appointed to work the week end to assist the government employes in obtaining population data.

Marshfield.—The perennial threat from Medford and other Rogue river valley cities to close the lower Rogue to commercial fishing has stirred up the residents of Curry county as usual, and they are out with a determination to block any such bill at special session of the legislature. Fishermen down there have organized to fight what they term "hold-up" and the Marshfield chamber of commerce is backing their efforts.

Salem.—There were 44 fires in Oregon, exclusive of Portland, during the month of December, according to a report prepared by A. S. Barber, state insurance commissioner. Klamath Falls suffered heaviest of any town in the state, the aggregate fire losses there for December amounting to \$40,000. Total losses from fires in December showed a marked decrease when compared with those of the previous month, according to Mr. Barber.

Salem.—C. H. Gram, state labor commissioner, is investigating the contents of a letter received from Senator S. A. Hughes, in which it was alleged that complaint had been made that certain contractors on Oregon highways had violated the laws by making their employes work more than eight hours. Mr. Gram is gathering information from various parts of the state and expects to make a report to Senator Hughes within the next few days.

Eugene.—Notwithstanding alarming reports to the effect that the recent cold weather has killed the loganberry vines that had been trellised and that appeared above the snow, the vines in many Eugene gardens and in fields throughout Lane county are beginning to sprout. It is believed that the damage will not be half what it was thought to have been. A number of farmers in Eugene say that the vines in many places are budding out as if nothing like zero weather has happened.

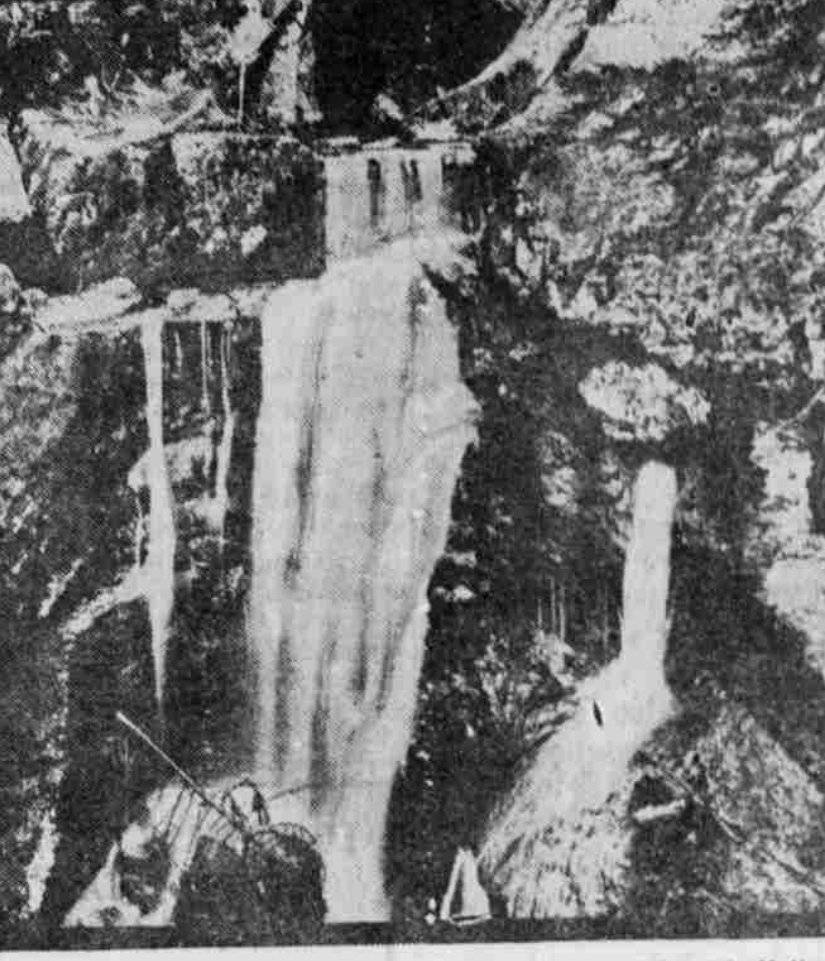
In each county of the state a committee of women who have been active in patriotic service is now being formed to cooperate with Miss M. Belle Jeffery, the State Director of Oregon, in the World's Service Program of Education and Finance which the National Board of the Young Women's Christian Association are carrying on throughout the United States during January and February. The purpose is to raise a \$3,000,000 fund to meet the increased demands of the reconstruction work among girls in this state, our own country, in France, Russia, Turkey, and other war stricken centers, and to provide leadership for such countries as China, Japan, India and South America. Health and recreation are to be featured for the girls in industry, business and in the smaller towns and rural districts. Social and moral standards are to be emphasized. Foreign born women are to be helped along lines of Americanization. The Y. W. C. A. has pledged itself to care for the womanhood of America and to do all it can for the young women of the world. It needs the cooperation and help of every community, for all are more or less affected by the great impetus to better living, and the protective influence of this organization. Girls from the smaller towns are constantly drifting into the cities and colleges where the Y. W. C. A. is ever ready with open doors and warm hearts to welcome and assist the girls needing its help and protection, or its friendly social life. Is not \$21,600 a small amount for the prosperous State of Oregon to raise as its share for the protection and development of the young womanhood of the world?

Additions to National Forests

Prepared by the U. S. Department of Agriculture

Purchase totaling 66,381 acres in the White mountains, the southern Appalachians and Arkansas at an average price of \$3.91 per acre have been approved by the national forest reservation commission, a body created by congress to purchase land on the headwaters of navigable streams for the protection of their watersheds. The action of the commission means that usefulness of the new national forests in the East, the inception of which dates from the beginning of purchase work in 1911, will be greatly increased.

The commission also decided to request, for the fiscal year beginning 1921, an appropriation of \$10,000,000 in five annual installments of \$2,000,000 for



Lost River issuing From Underground. A Scene in White Mountain National Forest, to Which Has Been Added a Large Tract by Recent Action of the National Forest Reservation Commission.

extending purchases. The program contemplated is contingent on the assurance of definite sums being available for making purchases through a period of years. Without such assurance the policy will be to restrict purchases to tracts contiguous to lands already approved for purchase. This policy is dictated in part by considerations relating to the administration of the lands and fire-protection measures. The lands recently approved for purchase bring the total area acquired or being acquired under the act of March 1, 1911, to 1,835,308 acres.

35 Executions in Army During War
 Ten Put to Death in France; Twenty-Five in the U. S.

The annual report of Maj. Gen. Enoch Crowder, judge advocate general of the army, was given out a short time ago, and with it there was made public for the first time an official summary of the "capital" cases occurring in the army since April 5, 1917, the beginning of the war period.

Death penalties were adjudged in 145 cases from that date to June 30, 1919, and execution was consummated in 35 cases—ten in France and 25 in the United States. Murder was charged in two of these cases, murders and mutiny in 19, assault in 11, and assault and murder in three.

"In no case," according to the report, "was a capital sentence for a purely military offense carried into execution."

General Crowder made no specific reference to the attack upon his administration by former Brigadier General Ansell, but in an appendix gave detailed statistics covering military courts martial.

FEED TO INCREASE EGG PRODUCTION

It is the practice of a large percentage of the most successful poultry men to feed a part of the daily grain ration ground. Most of them feed the ground grain moistened with either milk or water, although some feed it dry. A fowl's gizzard is capable of grinding all kinds of grain, but it is generally considered to be more economical to have a part of the grinding done by steam or water power.

The soft-feed idea, however, must not be overworked, says an authority. Hens like ground feed better when it is moistened than when dry. Although full fed on dry mash and grain they will eat a little bit more of moist mash. For this reason many poultry keepers give a light feed of moistened mash once a day to increase egg production. When handled right it is very effective.

A beginner often reasons that it is cheaper for the miller than for the fowl to grind the grain; but the powerful muscles of the gizzard are there to be used, and experience has shown that the balance of power of functions in the fowl's economy makes the vigorous exercise of the gizzard beneficial. When feeding moistened ground feed have it a comparatively dry, crumbly mash, and not a thin slop. Give what they will eat readily in 15 or 20 minutes.

HER MUSIC

It trembled off the keys—a parting kiss
 So sweet—the angel slept upon his sword,
 As through the gates of Paradise we swept—
 Partakers of creation's primal bliss!
 —The air was heavy with the breath
 Of violets and love till death,
 Forgetful of eternal banishment—
 Deep down the dusk of passion-haunted
 ways,
 Lost in the dreaming alchemies of tone—
 Drenched in the dew no other wings frequent,
 —Our thirsting hearts drank in the
 breath
 Of violets and love in death,
 There was no world, no flesh, no bound-
 ary line—
 Spirit to spirit—chord and dissonance,
 Beyond the jealousy of space and time
 Her life in one low cry broke over mine!
 —The waking angel drew a shuddering
 breath
 Of violets and love and death.
 —Martha Gilbert Dickinson.

Masks Worn to Represent Supposed Faces of Gods

Masks have a religious origin. Away back in prehistoric times they were doubtless worn by priests and others who took part in religious ceremonies; and this is the case today among primitive peoples all over the world. The masks are supposed to represent the faces of gods, whose parts are taken in the ceremonial by individuals assuming the character of divinities. In Polynesia the native deities are naturally oceanic, and many of the masks in that region represent astonishing fishes and monsters of the sea such as no human eye ever beheld.

LIGHT AND AIRY

A conceted man revolves around himself.
 Telephone girls never invite you to call again.
 Girls will be girls—if they can't be married women.
 A free thinker isn't a free thinker when he is in jail.
 A woman will have her own way even if it is a roundabout way.
 It is impossible to forget the majority of things that should be forgotten.

Most Perfumes Chemical And Not From Blossoms

The great bulk of perfumes are chemical productions. The Wall Street Journal says the commercial problem is whether the American perfumer of the future is to be an artisan or an artist. Shall he deal with the fragrance of flowers or chemical odors and scents? The idea of the layman is that the cosmetic chemist seeks the odor of flowers, but as a matter of fact, synthetic chemistry not only crowns his work with the crushed oil of roses, violets and jessamine, but seeks to rival the fragrance of flowers with superior scents originating wholly within the laboratory and trade-marked as such.

The G-E Range Saves Food
 The comparison shown here is not mere theory—it is based on actual tests. Figure this saving out in money at present prices of meat. See what it means to your pocket-book.

MOUNTAIN STATES POWER COMPANY

THE REASON WHY Money is More Safe NATIONAL BANK
 "OVER 21 BILLION RESOURCES"
 (Each Under Supervision of U. S. Government)
 Of all the places there are each Deposit, Hide, and Invest your Money—here is the place. "Why" we should prefer National Bank.

THE INDEPENDENCE NATIONAL BANK
 This Bank is Under Supervision of United States Government.

A Grocery That Never Disappoints Customers
GROCERIES Cheapest in Large Quantities
 Not Best Because Big But Biggest Because
 No Order Too Large To No Order Too Small To
 This Store Aims to Serve the Public Pleasantly and Well—Our Goods We Sell are Just as Represented and When Orders are We NEVER DUPLICATE. We Send You Just What You Never Send the "Just as Good" Kind.

Calbreath & Jones

DO YOU READ THE ENTERPRISE
 The Leading and Largest newspaper Independence as well as most widely