

**New Houston Hotel**  
Sixth and Everett Sts., Portland, Ore.  
Four blocks from Union Depot. Two blocks from New Postoffice. Modern and fireproof. Over 100 outside rooms. Rates 75c to \$2.00.  
CHAS. C. HOPKINS, Manager.

**Hotel Rowland**  
One hundred and sixty-five rooms, all modern improvements. Free phones on every floor.  
Rates: 75c to \$1.50 per day; \$2.50 to \$5.00 per week.  
Opposite Courthouse, 2 blocks from Postoffice, Fireproof, S. P. and Oregon Electric pass door.

**BEAUTIFUL RUGS**  
Are made from your OLD CARPETS. Rag Rugs woven all sizes. Mail orders receive prompt and careful attention. Send for booklet.  
NORTHWEST RUG CO.  
E. 8th and Taylor Sts. Portland, Or.

**TYPISTS**  
—AND—  
**DICTAPHONE OPERATORS**  
NOW IN DEMAND  
Take the short cut to success and use the Dictaphone. Positions secured when competent. The only school in the Northwest recommended by the Dictaphone Co.  
**SHERLOCK'S RAILROAD BILLING AND DICTAPHONE SCHOOL**  
Worcester Bldg., Portland, Or.

**Bigger Pay for You.**  
Bellevue-Walker Business College, Portland, Ore., largest in Northwest, trains you in all business courses. Enroll any time. Free Catalog.

**A FIGHT FOR LIFE**

It has been fight or die for many of us in the past and the lucky people are those who have suffered, but who are now well because they heeded nature's warning signal in time to correct their trouble with that wonderful new discovery of Dr. Pierce's called "An-u-ric." You should promptly heed these warnings, some of which are dizziness or the painful twinges of rheumatism, sciatica or lumbago. To delay may make possible the dangerous forms of kidney disease, such as Bright's disease, diabetes or stone in the bladder.  
To overcome these distressing conditions take plenty of exercise in the open air, avoid a heavy meat diet, drink freely of water and at each meal take Dr. Pierce's Anuric Tablets (double strength). You will, in a short time, find that you are one of the firm Indurans of Anuric, as are thousands of neighbors.  
Step into the drug store and ask for Anuric, or send Dr. V. M. Pierce, Buffalo, N. Y., for trial pkg. Anuric, many times more potent than lithia, eliminates uric acid as hot water melts sugar.—Adv.

**Mostly Talk.**  
"Getting up betimes and enjoying the early morning is delightful these days."  
"Yes; I often talk about doing it."

**So the Nurse Was Fired.**  
Her husband had just come home and had his first meeting with the new nurse who was remarkably pretty. "She is sensible and scientific, too," urged the fond mother, "and says she will allow no one to kiss baby while she is near."  
"No one will want to," replied the husband, "while she is near."—Exchange.

**Then and Now.**  
"Does your grocer attempt to explain high prices?"  
"He did at first. Now he merely shrugs as he accepts the money, and I groan."—Louisville Courier-Journal.

**Distrusted the Promise.**  
"Why so sad and downcast?"  
"My wife has threatened to leave me."  
"Cheer up. Women are always like that, but they hardly ever do it."  
"That's what I was thinking."—Exchange.

**ELECTRIC MOTORS**  
Bought, Sold, Rented and Repaired  
WALKER ELECTRIC WORKS  
Burnside, cor. 10th. Portland, Ore.

**HIDES, PELTS, CASCARA BARK, WOOL AND MOHAIR.**  
We want all you have. Write for prices and shipping tags  
THE H. F. NORTON CO., Portland, Ore.; Seattle, Wa.

**THE VOGEL PRODUCE CO.**  
Will guarantee you the lowest market prices at all times for your Veal, Hogs, Poultry, Eggs, Butter, Hides, Etc. If you have not shipped to us, try us.  
113 Front, PORTLAND, OR.

**SHIP**  
Veal, Pork, Beef, Poultry, Butter, Eggs and Farm Produce.  
to the Old Reliable Everedding house with a record of 45 years of Square Dealings, and is secured at TOP MARKET PRICES.  
F. M. CRONKHITE  
5-47 Front Street Portland, Oregon

**WE WANT YOUR Poultry, Veal and Hogs**  
HIGHEST MARKET PRICE  
NO COMMISSION  
PROMPT RETURNS  
HENNINGSEN PRODUCE CO.  
18-20 Front St. Portland, Ore.

**RABBITS FOR MEAT**

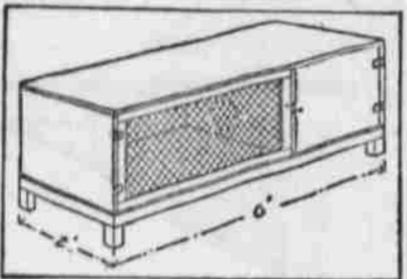
Belgian Hare Is One of the Best for Table Use.

**QUALITY OF FLESH SUPERIOR**

Much of Excellence of Animals Depends on Rapidity of Its Growth, and Still More on Manner of Cooking It.

(Prepared by the United States Department of Agriculture.)  
By the production of domestic rabbits on farms and in the back yards of villages and even of cities, the meat supply of the country may be considerably augmented. Such rabbits may be easily grown and can be propagated without costly investment in land and buildings.

The Belgian hare is one of the best rabbits for table use. It weighs more than most breeds, develops very rapidly, and the quality of the meat is superior to all the others. The Flemish giant is a cross between the Belgian hare and other breeds, developed especially for large size, with the result that the flesh may be slightly coarser in mature animals. With young hutch



Convenient Rabbit Hutch.

rabbits, few persons can distinguish differences in the quality of the flesh of the various breeds. Much of the excellence of the rabbit as food depends on the rapidity of its growth and still more on the manner of cooking it. As often prepared, it is dry and insipid; but in the hands of an experienced cook it becomes all that the most fastidious taste can wish. An especial requirement in cooking the Belgian hare is that none of the natural juices of the meat be lost in the process.

The directions herein given for the care of Belgian hares are applicable to the management of most other breeds.

**Selection of Stock.**

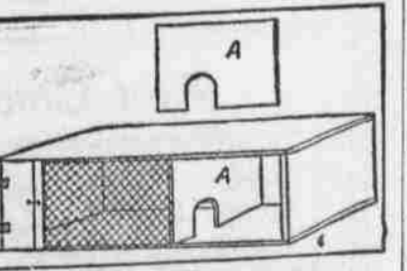
If rabbits are bred for food only, the selection of stock is of less importance than when they are bred for show purposes. All that is required is a sizable animal of good, hardy stock. However, the points for which the fancier breeds the Belgian hare include also those most desirable in a food animal, so that if one can find stock with these characters well marked, and at the same time constitutionally sound, he should by all means obtain it. Pure-bred stock is more profitable, too, because it may be sold for breeding purposes as well as for the table.

**General Standards.**

Belgian hare fanciers of a few years ago differed somewhat in opinion as to the proper standard of color for this animal. Some aimed at the color of the wild English hare—a sandy light brown. Most American breeders seem to have preferred a deeper reddish brown. In all other respects the standards were the same. The chief requisite concerning color is that it shall be as nearly uniform as possible throughout the upper surface of the animal and that the fur shall have a rich luster. The "flicking" or shading should be wavy rather than dotted. The belly and the lower surface of tail and hind feet should be whitish, but not pure white. The neck and breast should be somewhat lighter in shade than the back, but not in marked contrast with it, nor should the change in shade be abrupt.

**Ears.**—The ears of the mature Belgian should be about 5 to 5½ inches in length, varying with the size of the animal. They should be well shaped, strong at the base, and almost transparent at the middle. They must not be pendulous, but should, when the animal is quiet, be inclined backward, resting straight over the shoulders. A narrow black edging at the tip and as far down the front and back as possible marks the best stock.

**Body.**—The body of the whole is longer in proportion to the bulk than that of any other breed of the



Simple Outdoor Hutch.

same size. Bucks and the younger females should never have the appendage known as "dewlap." This sometimes develops in the older ones, but is regarded as a blemish in animals intended for show purposes. The back should be only slightly arched, and the forelegs and feet should be perfectly straight and free from white.

**Age of Breeding Stock.**—The beginner should always select mature animals about a year old for breeding stock. These may be known by the brisk, alert look, the small white teeth, and the small claws, almost hidden in the fur. Course, long claws are a sure indication of age. Listless-looking,

rough-coated, or pot-bellied animals (except pregnant does) should be rejected, especially those having the whites of the eyes stained with yellow. A hutch rabbit in good health is gentle, neither savage nor overtimid, and does not scream when lifted by the ears.

**The Sexes.**—The does selected for breeding may be of the same strain and even of the same litter, but the buck should be of different stock, and when possible obtained from another breeder. Hardy young animals with the best characteristics of the breed may be bought at from \$1 to \$2 each. Often they may be had of nearby breeders, thus saving the expense of carriage on long journeys by express.

**Hutches and Pens.**

The Belgian hare does not do well when kept wild in open warrens. The common English rabbit is better for this purpose. A good many Belgians have been turned out in various parts of the United States, and in the vicinity of the city of New York and on the western coast this has resulted in some complaints of damage to crops. As a rule, however, and fortunately for the farmers, these animals, when obliged to shift for themselves, fall an easy prey to their enemies and disappear within a few months.

Belgian hares may be managed successfully in two ways: (1) Entirely in hutches, or (2) in outdoor fenced runs, or courts, with hutches for does when having young, and sleeping hutches for other stock. The hutch system with various modifications is the more common and is the only method adopted by rabbit fanciers who raise for show. The use of small runs or rabbit courts to give the animals healthful exercise in fine weather is of advantage.

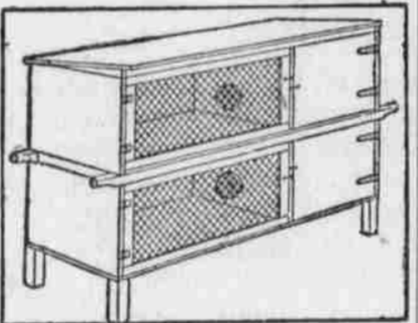
**The Rabbitry.**

The rabbitry may occupy part or all of a barn or shed, or be built in a sheltered space in the angle between buildings or walls. The indoor rabbitry has decided advantages. The place should be well ventilated, but not subject to drafts of cold or damp air. These may be prevented by ventilators in the roof, or by a system of elbowed pipes passing through the sides of the building and reaching a height of two or three feet above the openings.

**Hutches.**

Hutches for the Belgian hare should be somewhat larger than those intended for smaller breeds. They should be built of good lumber, have tight floors, and have at least 12 square feet of floor space and a height of two feet. If there is plenty of room in the rabbitry it is best to have the hutches separate; but they are usually set in tiers or stacks, two or three in height. Each hutch in the rank is complete in itself, so that its position may be shifted at any time.

A convenient indoor hutch is one 6 by 2 by 2 feet, with a movable partition dividing off a third of the space at one end for a nest and sleeping chamber. The partition has a smooth hole to permit passage of the animals from one part to the other. The front of the hutch has two doors, one of wire netting, the other of wood. The wooden door opens to the sleeping chamber and should close tightly. It is best



Movable Outdoor Hutch.

to use metal hinges for the doors. The partition may slide in a groove between the doors or may be put in and taken out through one of the door openings.

Outdoor hutches should have sloping roofs and overhanging eaves to protect them from rain. The screened door should have a sliding cover of wood or be fitted with a removable cloth cover. Small holes bored near the top of the hutch will afford all necessary ventilation.

Movable hutches have some advantages. They may be carried outdoors in fine weather and taken back under shelter at night or during storms. Long, narrow cleats projecting at both ends of the hutch are all that are needed to convert the ordinary hutch into a movable one.

**Courts.**

A rabbit court may be paved or floored, or it may be a grass court surrounded by a rabbit-proof fence. Sleeping hutches inside the court may be small boxes of any sort if they are stout and water-proof. They should have sliding doors to confine the rabbits if desired, and should also have small holes near the top for ventilation. If a court is used, hutches will still be needed for breeding does.

A rabbit-proof fence to inclose a grass court should be made of heavy poultry netting 5 or 6 feet wide and of 1½-inch mesh. The posts, projecting 3 or 4 feet above the ground, should be well set outside the edge of the court. The netting is stapled to the posts, leaving a projection of 6 inches or more at the top and about 18 inches at the ground, to be turned into the court. The lower edge should be covered with 10 or 12 inches of soil to prevent the animals from digging out. The upper edge also is turned inward to keep them from climbing out. Brackets at the tops of the posts make the best support for the overhanging netting, although horizontal pieces of wood nailed to the posts will answer.



To Everybody!  
Here's Wishing  
You All the  
Joys of the  
Holiday  
Season!

**SACRED MISTLETOE.**

The druids with ceremonies of great solemnity used to collect mistletoe with a golden sickle "against the festival of winter solstice." Only the oaks bearing mistletoe were sacred to this ancient order of men.

It is recorded that the people's reverence for the priests proceeded in great measure from the cures which the priests effected by means of this curious green plant of the pear-like berries. It was collected thus ceremoniously by the druids even as it was supposed to drive away evil spirits.

The reason among the druids for bringing in bits of evergreen from the woods and adorning the house is a most charming and lovable one: "The houses were decked with evergreen in December that the Sylvan spirits might repair to them and remain untroubled with frost and cold winds until a milder season had renewed the foliage of their darling abodes."—Craftsman.

**Forerunner of Christmas.**

The spirit of merrymaking that marks our Christmas holidays had its origin with the Roman feast called the Saturnalia. This was a festival in honor of Saturn, father of the gods. It lasted for a week or two, beginning about the 19th of December, and was the occasion for great revelry among all classes. No business was transacted during this period, war was suspended, private feuds were forgotten or forgiven, and general good fellowship reigned supreme. Friends exchanged presents with one another, and the slaves were waited upon by their masters and mistresses.

**A Wish.**

I'd fain have a centipede's stockings  
To hang by the fireplace tonight  
And then have an octopus Santa  
With eight arms to fill them up tight.  
—New York Sun.

**A Long Drawn Out Christmas**

In many parts of Switzerland the Yuletide customs and festivities still have their beginning on Dec. 6, which is the anniversary of St. Nicholas. Markets and fairs are then held in villages and cities, and, seeing that the old traditions prescribe for this day the purchasing of presents for the children, it is an event of utmost importance to all youngsters. In some districts St. Nicholas parades around in person in an attire very similar to that of our American Santa Claus, generally carrying a big bag filled with apples, prunes, nuts and homemade cookies, which he distributes among the children who have been obedient during the year.

The next and in modern days the most important festive day of the whole Yule season is Christmas day. History relates that it was only in the year 354 A. D. that the Roman Bishop Liberius regarded this particular day as the birthday of Christ, and as they were furthermore desirous of giving a more religious importance to two important Roman festivals which also fell due in the same period. With the observation of Christmas day the Christkindl, described as "a lovely angel with wings," gradually started to take old Santa's place in many sections of Switzerland. Christkindl, the Christ Child, is said to come from the far north and always brings a wonderful Christmas tree, decorated with all the glittering things associated with fairyland and heavenly laden with manifold gifts.

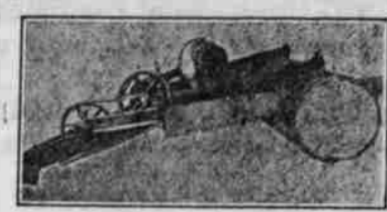
**The CORRECT TREATMENT FOR COLDS**

Colds are contracted when strength is lowered and the inflammation easily develops bronchitis or lung trouble, while grippe and pneumonia frequently follow and any cold should have immediate treatment with

**SCOTT'S EMULSION**  
The National Strength-Builder

which first builds up the forces by carrying rich nourishment to the blood streams and creates real body warmth. Its cod liver oil is the favorite of physicians for correcting bronchial disorders and chest troubles.

The imported Norwegian cod liver oil always used in Scott's Emulsion is now refined in our own American laboratories which guarantees it free from impurities.  
Scott & Bowne, Bloomfield, N. J. 17-19



**VAUGHAN'S PORTABLE DRAG SAW**

Cuts 20 Cords in 10 Hours  
THE ORIGINAL, THE LIGHTEST, THE STRONGEST, HAS MANY IMITATORS, BUT NO EQUALS. Write for information.  
Vaughan Motor Works, 475 E. MAIN  
PORTLAND, OREGON.

**Nothing Left.**

"Yes, we used to sit out in the old summer house in the beautiful moonlight. Strange to say, Jack never believed he kissed me as often as I accused him of doing."  
"Ah, and how did you convince him?"  
"Why, the next night I told him to cut a notch in the summer house each time he took a kiss."  
"How did the scheme work?"  
"Very well for a while, but—er—by the end of the week there was no summer house left."—Exchange.

**CUTICURA HEALS ECZEMA**

And Rashes That Itch and Burn—Free to Anyone Anywhere.

In the treatment of skin and scalp troubles bathe freely with Cuticura Soap and hot water, dry and apply Cuticura Ointment. If there is a natural tendency to rashes, pimples, etc., prevent their recurrence by making Cuticura your daily toilet preparation. Free sample each by mail with Book. Address postcard, Cuticura, Dept. L, Boston. Sold everywhere.—Adv.

**Very True.**

The science of food was a pet subject with a certain teacher, and she never wearied in telling her pupils all about food values, proteins, carbohydrates, fats and other funny things. At the end of one lesson she set some questions to test what they had learned.  
"Can any girl tell me what three foods are required to keep the body in perfect health?"  
One maiden promptly waived an exulting hand.  
"Please, miss," she said eagerly, "breakfast, dinner and tea!"—An

**As Br'er William Sees it.**

You never know when you is happy till you is c'lar out er happy land, an' den you ain't got time nuff left ter kick yo'se'f not knowin' it at de right time.

To keep clean and healthy take Dr. Pierce's Pleasant Pellets. They regulate liver, bowels and stomach.

**Unusual.**

"See anything unusual on your trip?"  
"Yes. At one of the places where I stopped I found a ticket agent who didn't seem annoyed when I asked for a ticket."—Detroit Free Press.

**The Difference**

"What's the difference between a drama and a melodrama?"  
"Well, in a drama the heroine merely throws the villain over. In a melodrama she throws him over a cliff."—Judge.

**HEAVY MEAT EATERS HAVE SLOW KIDNEYS**

Eat less meat if you feel Back-achy or have Bladder trouble.

No man or woman who eats meat regularly can make a mistake by flushing the kidneys occasionally, says a well-known authority. Meat forms uric acid which excites the kidneys, they become overworked from the strain, get sluggish and fail to filter the waste and poisons from the blood, then we get sick. Nearly all rheumatism, headaches, liver trouble, nervousness, dizziness, sleeplessness and urinary disorders come from sluggish kidneys.

The moment you feel a dull ache in the kidneys or cloud burts or if the urine is cloudy, offensive, full of sediment, irregular of passage or attended by a sensation of scalding, stop eating meat and get about four ounces of Jad Salts from any pharmacy; take a tablespoonful in a glass of water before breakfast and in a few days your kidneys will act fine. This famous salt is made from the acid of grapes and lemon juice, combined with lithia, and has been used for generations to flush and stimulate the kidneys, also to neutralize the acids in urine so it no longer causes irritation, thus ending bladder weakness.

Jad Salts is inexpensive and cannot injure; makes a delightful effervescent lithia-water drink which everyone should take now and then to keep the kidneys clean and active and the blood pure, thereby avoiding

**DARK GRAY HAIR, LOOK YOUNG, PRETTY**

Sage Tea and Sulphur Darkens So Naturally that Nobody can tell.

Hair that loses its color and lustre, or when it fades, turns gray, dull and lifeless, is caused by a lack of sulphur in the hair. Our grandmother made up a mixture of Sage Tea and Sulphur to keep her locks dark and beautiful, and thousands of women and men who value that even color, that beautiful dark shade of hair which is so attractive, use only this old-time recipe.

Nowadays we get this famous mixture improved by the addition of other ingredients by asking at any drug store for a 50-cent bottle of "Wyeth's Sage and Sulphur Compound," which darkens the hair so naturally, so evenly, that nobody can possibly tell it has been applied. You just dampen a sponge or soft brush with it and draw this through your hair, taking one small strand at a time. By morning the gray hair disappears; but what delights the ladies with Wyeth's Sage and Sulphur Compound, is that, besides beautifully darkening the hair after a few applications, it also brings back the gloss and lustre and gives it an appearance of abundance.

Wyeth's Sage and Sulphur Compound is a delightful toilet requisite to impart color and a youthful appearance to the hair. It is not intended for the cure, mitigation or prevention of disease.—Adv.

**One More Scalp.**

He—I've a notion to propose to you. She—Please do. He—I'm trying for a record.—Exchange.

**Hun Music Barred.**

"The other evening they (the boches) had a piano in their advance trenches, and we were close enough to hear the performance," writes a Tommy.

"What the blazes are you playin'?" one of our chaps shouted across.  
"Wagner!" came the reply.  
"Well," grumbled Tommy, "I don't wonder we're fightin' you about it."—Pardon's Weekly.

**HAVE YOU A SWEETHEART?**

Son or Brother in camp or training for defense? If so, mail him a package of Allen's Foot Ease, the antiseptic Powder for Tired, Aching, Swollen Feet, and prevent chafes and sore spots. Makes walking easy. Sold everywhere, 25c.

**He Had Forgotten.**

One morning a good tramp called at a house for something to eat. After a sandwich and some cake had been given to him, he said: "But this is a wheatsie day!" "Oh, I am so sorry," the lady replied, "I forgot; here is a paper napkin; perhaps you would like to wrap it up and save it for tomorrow!" "Thank you, lady, a fine idea." But when she later found some crumbs on the garden steps she said to herself, "I'm afraid he has forgotten."

**Between Two Fires.**

"I educated one of my boys to be a doctor and the other to be a lawyer," said Farmer Cortosel.  
"You should be very proud of them," announced the visitor. "That seems like an excellent arrangement."  
"I don't know about that," replied the aged agriculturist. "It looks as though it was a-going to break up the family. I got run into by a locomotive and one of 'em wants to cure me and the other wants me to go lame so he can sue for damages."—Leslie's Home Journal.

**Revised.**

"Eat, drink and be merry."  
"That used to go, but nowadays we say it differently."  
"What is it now?"  
"Be merry, the you cannot afford either to eat or drink."—Exchange.

**MURINE Granulated Eyelids.**  
Sore Eyes, Eyes Inflamed by Sun, Dust and Wind quickly relieved by Murine. Try it in your Eyes and in Baby's Eyes.  
Murine Eye Remedy At Your Drugstore or by Eye Salve, in Tubes 25c. For Book of the Eye—Free. Ask Murine Eye Remedy Co., Chicago 4

**TYPHOID** is no more necessary than Smallpox. Army experience has demonstrated the almost miraculous efficiency of the latest Antityphoid Vaccination. Be vaccinated NOW by your physician, you and your family. It is more vital than house insurance. Ask your physician, druggist, or send for "Have you had Typhoid?" telling of Typhoid Vaccination from us, and danger from Typhoid Carriers. THE GUYTON LABORATORY, Berkeley, Cal.