

Independence Will Double in Size and Resources in Five Years

THE BUILDING OF THE VALLEY & SILETZ RAILWAY INTO OUR CITY MEANS THAT INDEPENDENCE WILL BECOME THE TRADE CENTER OF POLK COUNTY—WILL BE THE OPEN DOOR TO THE GREATEST TIMBER BELT IN THE WORLD.

The place for you is Independence—your opportunity is here and the time is now. It has been well said that to be successful in life is to be ready when your opportunity comes and have the courage to grasp the things which you know to be good.

Your opportunity is here. ARE YOU READY?

The good things are here. THE TIME IS NOW.

Will you lay hold upon them?

Time and tide wait for no man, yet there is a tide in the life of every man if taken at the flood leads on to fortune—and Independence.

While in no other part of the globe can there be found a greater diversity of natural resources—a soil and climate that will produce any food plant, tree, vine or shrub cultivated by civilized man; water power, lumber, sugar beets, hops, stock raising, peppermint, walnuts—pause a moment—Independence and Polk county lacks one essential thing—more people and still more people to develop this rich heritage. Growing slowly in population and developing commercially and industrially with other towns in the state, with little room, lots of room, for more people—to the industrious, frugal, thrifty, farmer and ambitious farmer, there is abundance of opportunity to engage in various kinds of farming—sugar beets offers the secret of increasing your bank account. Consider well these facts as vouched for by the ablest and most successful farmers in the United States.

Polk county, especially the vicinity tributary to Independence, assures a good living from its never-failing crops and a chance to earn a competency, hence its extremely mild but embracing climate not only bespeaks health and long life under the most enjoyable environments, but those conditions reduce the cost of living so essential to the man who can have some of the pleasures of life and yet earn more than he is compelled to spend. With the

make this city midway for all traffic between here and Newport.

Are you going to be of the far-seeing and wise ones desirous of bettering your condition, who shall seek and find here the fondest dreams come true?

The people of Independence and Polk county will welcome you and the country will do the rest.

The ultra-conservative, those who are living in the past, will tell you that if Polk county is such a good place in which to live, to make money and get on in life, why has it not developed more rapidly—why have not these opportunities been seized upon? This problem is now being satisfactorily and conclusively solved, therefore the past has nought to do with shaping the verile present.

The growing of sugar beets will largely replace hops, and while the past



A farm scene along the new Valley & Siletz Railway, showing the rich country this new railway passes through.

season has been extremely backward, yet we have confidence that this valley is suitable for this crop and within a comparatively few years will be the leading product grown here. You, Mr. Farmer, are concerned with the now—the existing realities and the hope of the future, which, if acted upon with intelligence, will inevitably lead you to find a home here where the dollar and a chance to earn it, await you. The past is dead and can never live again. The present is life, real and earnest, and the future, the road to fortune. GET BUSY. Do it now, and you will have no time for vain regrets. The Lord helps those who help themselves. This is God's country. The building of the new railway of the Valley & Siletz means that Independence will become the metropolis and trade center of this particular section and is destined in a few years to become the leading and most prosperous town in the county.

Satisfied the excellent county fair held at the county seat the past summer and conceded over the records established at the State Fair when this county captured first in its district in general exhibits and also in the school district exhibits, and the success at the Manufacturers' and Land Products Show in Portland, nailed down first prize for Polk county, over sixteen contestants, naturally the citizens of the entire county feel that their home county is entitled to considerable recognition. The neatness and artistic arrangements of the exhibits in the county booth is credited to our efficient secretary of the county fair, Mrs. Winnie Braden. The livestock that brought home to this county one-third of the prize money at the State Fair was not imported or even raised for the purpose, but was a fair example of horses, cattle, swine, goats and sheep that are raised in this county, merely representative of the blooded livestock which exists here in such large numbers that today this county justly lays claim to being the home of one-third of the blooded livestock in the state of Oregon. The agricultural and horticultural ex-

erably extended during the next few years.

In the United States the beet sugar industry has proved to be most successful and has found its greatest development under irrigation; in fact, most of the sugar beets of the country are now produced with the aid of irrigation water.

The expense of raising an acre of beets is so great that every condition should be as favorable as possible in order to prevent losses. Unless the soil and moisture conditions are favorable it is impossible to get a crop of sugar beets sufficiently large to pay the cost of production. The cost of raising an acre of grain is relatively low, and if the crop is poor the loss is slight; with beets the farmer cannot afford to have a failure.

These conditions make it especially desirable to understand the water requirements of the sugar beet plant. A little increase in yield adds considerably to the relative net profit of the crop.

It is impossible to give rules for irrigation that apply under all conditions, but it is believed that the experiments reported in this bulletin will be directly helpful to those having similar conditions, and they may offer some suggestions to those having different conditions.

The best amount of water to use, the proper time to apply it, the number of applications, and other problems connected with the irrigation of sugar beets necessarily vary in the different parts of the country and under differing soil conditions. In various places extensive experiments have been conducted on the water requirements of this crop, but in the review of the literature only those closely connected with the experiments that follow will be discussed.

In a government report of irrigation and drainage investigations in different states, data from Kansas show that with a seasonal rainfall of 13.7 inches the yields per acre of beets and sugar were higher from an irrigation of 5.31 inches on July 26th than from 5.7 inches applied April 12th, although the percentage sugar was 1.2 higher for the early irrigation. The percentage purity was higher for the beets not irrigated. The Colorado results indicate that winter irrigation and early seeding favor a good stand. With observations on twenty fields, irrigated in the usual way, the average amount of



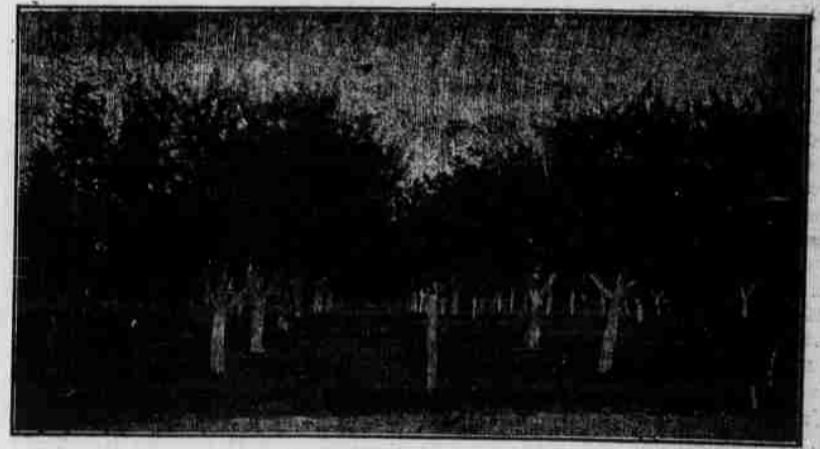
Another farm scene taken along the new Valley & Siletz Railway.

water applied during the season was found to be about 15.6 inches. Most farmers irrigated from one to four times with about 5.8 inches to an application. The total water used, including the rainfall, was not more than 24 inches, although some practiced winter irrigation in addition. Cultivation as soon as possible after the water was applied was found to be absolutely essential to successful beet culture on this soil because of the crust formed by the water. Failure to cultivate deeply resulted in a "pinching" of the beet which reduced the diameter and made it grow in odd shapes.

Reading from experiments in Colorado in 1906 found that a higher yield per acre was produced from about 11.3 inches of water applied in two irrigations than from larger quantities in three or four irrigations. The irrigation of every row by means of lath boxes produced a yield 1.2 times as great as the irrigation of alternate rows by the same method, and nearly 1.5 times as great as the irrigation of every row by the open-furrow method. In 1908 about ten inches of water applied in two irrigations produced the highest percentages of purity and the yields were lower than where larger quantities were used in three or four applications. Keeping the soil continually wet reduced tonnage. The irrigation of every row resulted in a more economical use of water than the irrigation of alternate rows, while with either method the use of lath boxes saved considerable labor.

He showed sub-irrigation can be practiced with good results on soils sufficiently impervious to permit strong lateral movement, but the loss was often so great by evaporation and seepage that this method was not, as a rule, so economical as surface irrigation. He concluded that too early irrigation tended to make a turnip-shaped beet and produced an unusually heavy growth of leaves without a corresponding development of root. If the water is withheld too long, the beet will begin to mature and so prevent its proper development later. As long as the leaves look fresh and healthy in the early morning, it is unnecessary to irrigate. Two to four applications of water should be sufficient on ordinary soils.

According to Townsend, winter irrigation of beet land is highly beneficial where the precipitation at this season is light. If the seed-bed is dry it is much much better to irrigate before seeding than to irrigate the crop up, especially in fields likely to crust after an irrigation. The beets should be carried as long as possible after they are up before watering so the plants will be forced to form long roots and, therefore, yield a high tonnage. The action and color of the plants are the best means of judging the time to irrigate and quantity of water to apply. Furrow irrigation is much better than flood-



A beautiful farm orchard taken along the Valley & Siletz Railway.

ing, especially for small beets since excluding the air from the beet roots for a few hours by flood irrigation causes the plants to suffer, particularly if a permanent crust of silt is formed.

At the Sub-Station in Nebraska, Knorr found the best results when beets were irrigated at such times as to keep the plants in good growing condition from the time of thinning until about three weeks before harvest. The irrigations should be in moderate amounts and the soil never so dry that the plants suffer for lack of moisture. It is desirable to cultivate the beets in order to break the crust made by irrigating as soon as the soil becomes dry enough. He also found that for sugar beets receiving three irrigations during the growing season, a yield of 1.6 tons to the acre more was realized from land that had been fall irrigated than from that which was only watered during the growing season.

Previous Work at the Utah Station.

Ever since the establishment of the Utah station over twenty-five years ago, (Continued to Page Eight.)



Beets shaped like 94 give a good yield and there is but little waste in topping. With beets shaped like 96 there is considerable waste. The shape can be affected by irrigation.

hibits at the state fair and the Land Products Show are nothing out of the ordinary. Owing to the lateness and dryness of the past season, the exhibits this year have not come up to the standard of the previous years but the same condition existed not only in this county, but throughout the state as well as a greater portion of the United States.

With approximately 500,000 acres of land within its boundaries and only 137,368 acres in cultivation and its population a little less than 15,000 it would appear that the greatest need in Polk county is more people. There are 11,520 acres in the forest reserve and 451 in public lands, making a total of 11,971 not patented or deeded. Approximately there is about 450,000 acres in private ownership, and of this 260,000 are improved with 127,000 of this uncultivated. There are about 180,000 acres unimproved and there are about 2880 acres in incorporated cities and towns.

From this it can be seen that there is a vast amount of tillable land now uncultivated showing the great possibilities of development. Further, many of the farms are of such large area that they could be cut up into smaller sections. The average farm in this county is about 167.2 acres, there being 1557 farms comprising 98,564 acres. Polk county possesses almost any kind of soil known to the Willamette Valley and in typography is level, rolling, hilly and mountainous. The bottom lands tributary to Independence are rich dark loam, exceedingly productive and adapted to a variety of uses.

The mountainous region in the western part of the county are either covered with timber or else have been burned off by recent fires which devastated a wide area of land, which was richly covered with timber. A number of logging sections were completely destroyed with a loss estimated at several thousand dollars. When cleared and ready for cultivation this land should produce large crops. Soil that will raise the giant trees that have grown there should be capable of raising almost any crop.

THE SUGAR BEET INDUSTRY AND ITS IMMENSE VALUE TO THIS COUNTY AND DAIRY INTERESTS

By F. S. Harris Director of Experiment Station Utah.

The sugar beet crop during the last few years has come to be one of the most important sources of income for farmers in many sections of the country. The fact that the sale for the crop is certain at a price that is known in advance, in addition to the high type of farming that usually accompanies sugar beet raising, makes it probable that the sugar beet area will be consid-



Flumes in the experiment being harvested. The flumes that carried the water are seen running across the field.

ing and completion of the Valley & Siletz Railway into our city, which understand will ultimately be extended on to the coast, is destined to

COMING!



The Giant, 8 Ft. 6 In., "Jack and the Beanstalk"—William Fox Production.

TO
ISIS

THEATRE

WEDNESDAY

AND,

THURSDAY

Dec. 19-20

"JACK
—AND THE—
BEANSTALK"

A TEN REEL FOX SPECIAL

Two Hours of RIOTOUS FUN,—THRILLS and SOBS—a SUPER de LUXE PICTURE.

The Giant 8ft 6-inches.—The Fox Kiddies.

REMEMBER THE DATE—DEC. 19TH and 20TH

18
12/10