

Independence Enterprise

W. J. CLARK, Publisher.

Entered at the postoffice at Independence, Oregon, as second class matter.

PUBLISHED EVERY FRIDAY

SUBSCRIPTION RATES

One year in advance \$1.50
Six months in advance .75
Three months in advance .50

MEMBER OF THE STATE EDITORIAL ASSOCIATION.

FRIDAY, FEBRUARY 23TH

A SIMPLE LESSON IN ARITHMETIC.

IF you Spend YOUR MONEY out of town. And your neighbor spends HIS MONEY out of town. And EVERYBODY spends his money out of town. What will become of this town. THINK IT OVER TRADE AT HOME.

Woolen mill is to operate and employ 20 men at Bandon.

Mt. Hood R. R. will build two-mile extension toward Lost Lake.

Grants Pass will experiment with New Zealand flax in that district.

Put as much energy into your vocation as you put into your vacation.

Lincoln county plans buying portable sawmill to cut lumber for planked roads.

Easter capitalists lease 3200 acres of land near Roseburg to drill experimental wells for oil.

Ship yards at Portland are humming. Big steam schooner to be built, owned and operated by Portland men.

Beet growing is becoming the popular industry at Grants Pass. The land can be made to produce from \$75 to \$100 per acre under correct treatment.

A good way to insure taxation on money would be to make it unnecessary for a person to pay interest on borrowed money unless it can be shown that it has been taxed during the time the borrower has had use of it.

With the danger of war hanging over the country, we are brought face to face with the value of our industrial plants and railroads to the government. Conservative legislation for their protection should be the order of the day.

Southern Pacific at its own expense, is maintaining complete patrol system for tunnels and bridges as well as its stores of supplies, might be destroyed and hamper operation of road when needed for rapid transportation of troops and supplies.

Suburban residents are seeking extension of carlines but President Griffith of P. R. L. & P. Company, said it was impossible, "until Portland treats the street car company a little more generously." We would suggest that the residents ask the jitney drivers union to put autos on the run at 5 cents fares.

\$200,000 is to be spent at The Dalles this year on building Wittenberg-King Company's new plant to cost \$200,000. Catholic boys school will be erected at cost of \$12,500, Libby, McNeill & Libby to construct dormitories for employes, new garage to be worth \$35,000 to go up and addition of another is started.

Aside from the direct interest to the farmers, many benefits are derived from a sugar factory. It employs from 400 to 500 men from October until February, turning the unproductive time of 500 men into productive time and at low estimate of \$50 per month would mean an increase of wealth to the extent of \$25,000 a month.

And now a bill is before congress to prevent launching any vessels for foreign owners. This act should kill American shipbuilding as successfully as La Follette's Seaman's act has killed American shipping and both industries would then be dead enough to satisfy the most radical politician and labor agitator. Of course our workmen can go to a foreign

Do they call him "the half-back," because he is likely to come back half-gone.

No wonder some men are always suspicious of others. They know themselves.

The scythe that mows men down doesn't keep the grass cropped on their graves.

No fluctuations, however, have been noted in the market quotations on postage stamps.

Kings and queens were involved and so it was that a family far became an earthquake in Europe.

When your husband begins to treat you with unusual consideration it's time to go through his coat pockets.

The speed-limit signs are posted along the public highway, so that all who run may read. The average autoist, however, runs to fast to read.

There are a lot of good bookkeepers abroad in the land, as any man who has been so foolish as to loan his favorite volume is in a position to attest.

THE REACTION AT EVERETT, WASHINGTON

The best evidence that our country believes in law and order and not in violence is shown by the reaction of public sentiment at Everett.

The shooting up of the town over attempt of a teamboat load of I. W. W. terrorists to end the shingle weaver's strike by force has weakened the cause of industrial revolution by force.

The organization that resorts to violence, doomed in our country, and is not meeting with much support in its struggle for relief in courts, moderate socialists and labor union men not backing it up.

Wages on Pacific Coast are uniformly high and working conditions are far above average, and the only chance for those who resort to force is to pose as victims of persecution for free speech.

The advocates of loafing on the job breaking up tools, spoiling materials, ruining machinery, destroying property, and applying the torch as a remedy for social injustice, are not Americans.

GET BUSY AT ONCE.

The dispatches say President Wilson asks early passage of workable legislation permitting development of western waterpowers on public land.

Theorists and vote hunting politicians have held up such legislation for years on the false cry of "conservation."

It is rank waste to allow a stream to run unused to the ocean and call "conservation" of resources.

Just legislation has long been before congress, properly safeguarding the public's right in these waterpowers and preventing monopoly in any one hand.

The time is here to do something definite.

If steps are not taken to make it possible for private capital to develop our own waterpowers, we will see our money pouring in a golden stream into development of similar undertakings in foreign countries.

Our shipping industry is in the same situation. Our own laws offer no inducement to American capital to develop overseas shipping. Unless this is changed, the American flag will be a minus quantity on the seas after the war is over.

Our law makers should take advantage of present opportunities at once and pass legislation to encourage these great industries.

A BIBLICAL LESSON

Do our zealous prohibitionists and other holler than thou folk, who are always trying to abolish sin by the decree, "thou shalt not," overlook the fact that it was that very decree itself that introduced sin into the world? When the notice was hung upon the tree in the Garden of Eden, "thou shalt not eat of this fruit," we know what effect it had upon our dear old mother Eve. Had it not been for the sign and the decree, the chances are that she would have had no desire to partake of the fruit, and the world would be without sin, even unto this day.—British Columbia Federationist.

POLITICAL WIRING RURAL CREDITS.

If the Rural Credits Law provides for appraisers, or other agents, working on the commission basis, it will be wired for political effectiveness in the hands of machine politicians. The method of political control and manipulation by which this law will become such an agency in that event is not difficult to explain and is even less difficult to understand.

Loans are desired. Appraisers transacting the business for the state, work on a commission basis. The larger the loan the larger the commission. The more certain the loan the more certain the compensation. The more loans the more money. All these are conditions that lead to collusion of personal and political interests. The man who is accompanied with a loan becomes a friend, and the bigger the loan on given security the firmer the friendship. When such friendships may be of state-wide extent between private citizens and state officials under the control of a single administrative board, we shall have all the material and conditions requisite to build one of the strongest political machines that has ever existed in Oregon.

CAPITAL NOT GOING INTO AMERICAN SHIPS.

The Examiner says San Francisco will never attain maritime supremacy so long as we permit the stranger to own and operate the great bulk of overseas shipping.

It says the Bay has now great shipbuilding plants that can turn out a 10,000 ton ship in sixteen days but they are building them all for foreign shipping firms.

It asks why are not American capitalists arranging to carry our flag and our commerce overseas, and why they are not alive to the opportunities of overseas commerce.

It shows how Japanese are grabbing the trade between the Pacific Coast and the Orient, and how San Francisco Chinese are maintaining the American flag on the Pacific.

It shows how not a merchant vessel sails from the Philippines under the American flag, and how Holland shipping has taken the trade from our ports that formerly went to the East Indies.

There was never a better demonstration of the value to our country of direct steamship communication to say nothing of money paid for freight going and coming is paid to foreigners.

The Examiner says it is complained that our laws do not favor building of an American merchant marine, and that our laws are less fair and that we are far behind even little New Zealand.

Capital is here in great abundance for investment, but it will not go in to building American-owned ships because they cannot compete with shipping of other countries under our laws.

The LaFollette law drawn up by President Fureath of the Seamen's unions, and President Campers of the Labor unions, and put over for the purpose of catching the labor vote for Congress is doing the trick.

What show will our country stand gaining its share of commerce of the world against countries where government encourages capital to go into ownership of overseas shipping.

We are nobly trying to lift by legislation the standards of wages and employment of men to man our ship and regulate capital that goes into them, but the rest of the world will be slow to accept.

In the meantime, American business men would be foolish to put their money into shipping enterprises in open competition they are not permitted to meet by the laws of their own country, and we will have no overseas shipping to speak of, and the American flag will disappear from the seven seas and is not even respected by all labor unions.

JITNEYS PREVENT DEVELOPMENT.

There is no extension of carlines or development of suburbs in any city with jitneys.

At Los Angeles certain suburbs asked extensions and five cent fares but all were refused by the Public Service Commission.

The Commission says if extensions and reductions were made, the Pacific Electric Traction Company, would further lose \$500,000 a year.

Only because the S. P. Co., owns the Pacific Electric has it been able to support the losses caused by jitney competition.

This amount added to \$821,734—the actual loss sustained in 1916—would create an annual deficit in excess of \$1,000,000, it was decided.

The commission found income of Pacific Electric has been decreased between \$30,000 and \$40,000 a month as a result of jitney competition.

The people cannot have duplication of street and interurban transients of carlines and building up of population and also secure extensions.

The same condition exists in Portland, Seattle and many other coast cities.

AUTO SALOONS IN COLORADO.

The Denver Post tells, in the following fashion, of the difficulty Colorado is having in enforcing her prohibition law:

From one end of Colorado to the other there are more than a thousand saloons, each doing a lively business, not only every week, but on Sunday also. They pay no license, either government, state or city, and every cent they charge over the cost of the rotten whisky they sell is clear profit, according to Robert H. Kane, deputy district attorney, who is designated by District Attorney Rush to try liquor cases in the county court.

1,000 Saloons on Wheels.

According to Kane, these saloons are automobiles, but saloons, nevertheless. "They are operating in all parts of the state," said Kane. "In most counties the authorities are doing all they can to suppress the business, but are not able to do so. These automobiles bring booze from Wyoming, Nebraska, New Mexico and Utah, whichever state happens to be the nearest. Some of them operate as common carriers and make a pretense of obeying the prohibition law, but none of them that I have heard of do obey the law.

"It is only a pretense. They take orders from their customers, then cross the border, buy the liquor and return with it and deliver it to their patrons, charging a large profit on each package. The charge is ostensibly a charge for hauling.

"The customer will order, say two quarts of whisky. The saloon on wheels will take that order and many others and go to Cheyenne, for instance, buy the two quarts of whisky for \$3, bring it to Denver, where the customer lives, and charge him \$4 for it, making a profit of \$1 on the deal. If officers attempt to arrest the owner of the saloon on wheels he will say that he charged the \$1 for hauling the liquor to Denver.

Violate the Law.

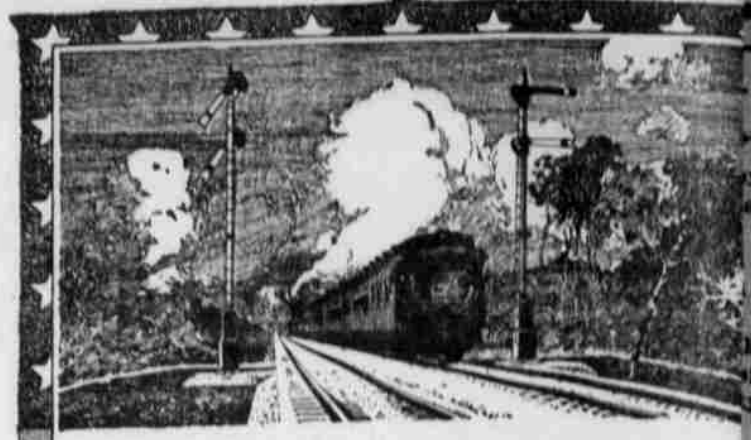
"The law which requires that an affidavit shall be sworn to by each purchaser of liquor which is imported into this state that the stuff is for his own personal use is constantly violated by these automobile saloons. Also the tax of 25 cents on each package of whisky imported into the state is seldom paid.

"The profits from this business are enormous. One wholesale bootlegger whom I tried and convicted in the county court paid a fine of \$280 and costs. In addition he paid his lawyer \$150, making a total of \$300. He boasted afterward that he had made \$10,000 by supplying small bootleggers with whisky. He has quit the business, as far as I know. A second conviction would mean a penitentiary sentence for him, but he made more money bootlegging in a few months than he could in a year with a legitimate saloon in a wet state."

FLETCHER & BARRICK, ATTORNEY'S, door south of Farmers State Bank, in Hotel Beaver. 9th

Marshall 95. Work Guaranteed. A 3363 Prices Reasonable

DR. LORAN BOGAN, Dentist, 45-459 Morgan Bl'g. PORTLAND, Washin: ton at Broadway. ORE.



Good Travel Insurance

Every foot of the Union Pacific System between Portland and Chicago is protected by Automatic Electric "Safety" Signals.

Go EAST via the famous Columbia River Route and enjoy the security from delay and annoyance these sentinels assure.

WM. McMURRAY, General Passenger Agent, PORTLAND

PRACTICAL BAKING LESSON

PAPER BAG COOKERY

Cooking in Paper Bags, for meat, vegetable pastries is becoming so popular that recipes method are greatly in demand. Many articles are improved by using paper bags. One can buy specially prepared bags at all grocers in assorted very small cost. Below I will give you a few which I have found are much finer in the baked in the open oven.



Nevada Briggs

Apple Dumplings Paper Bagged

2 cups sifted pastry flour, 1/4 teaspoonful salt, 2 level teaspoonfuls K C Baking Powder. About 1/4 to 1 cup milk, 1/4 cup shortening, Cinnamon or nutmeg, Sugar. Sift together, three times, the flour, baking powder and salt; work in the shortening and mix to a dough with milk as needed; roll into a square sheet one-third inch thick and cut into four pieces. Lay a cored and pared apple on each piece, fill the center with sugar and cinnamon, then draw up the dough to cover the apple; make smooth and place in a well-buttered paper bag, giving plenty of space in the bag for the dumplings to rise. In using the bags, oil the entire inner surface, have the seam side up and pin mouth of the bag securely. Place the bag on a shallow pan. Have a slow oven when the bag is placed in the oven and increase heat later. I find the most frequent mistake in using bags is to have the ovens too hot. It takes much less heat to bake in a paper bag than in the open oven. To determine when the apple dumpling is baked, make a small hole in the top of the bag and test with a fork. You will find apple dumplings baked in bags are delicious, the pastry being very light and soft. So often apple dumplings baked in the old way in the open oven have a very hard crust. Serve dumplings with cream or Hard Sauce.

Hard Sauce

Beat half a cup of butter to a cream, gradually beat in one cup of sugar and press into a dome shape on a glass or china plate. Grate a little nutmeg over the top.

Beef Roll in Paper Bags

3 cups flour, 1/4 cup shortening, 2 beaten eggs, 3 level teaspoonfuls K C Baking Powder, 1 cup each, chopped cooked beef and ham, 1 teaspoonful mixed mustard, 1/2 teaspoonful each, salt and pepper, Broth or water. Mix a biscuit dough of the flour, salt, baking powder, shortening and milk, and roll into a sheet half an inch thick, having the ends even. Mix the other ingredients by themselves, using liquid as needed to make a paste. Spread the paste over the dough and roll like a jelly roll. Other cooked meats may be used in the same way. Often we have several different kinds of cold meats left, with not enough of any one kind for a particular purpose. One can use these several kinds putting them through the food chopper, using two cups of this chopped meat, seasoning as desired. For baking in the paper bag prepare the bag as for apple dumplings and bake by same rules. Serve with a brown gravy.

Brown Gravy

2 tablespoonfuls of butter, 1/4 of beef extract; brown this with spoonful of flour, add 1 1/2 cups of salt and pepper to taste and cook 1/2 2 tablespoonfuls of beef frying fat instead of the butter for gravies; use cold water to avoid lumping.

Left Over Sausages In Paper Bags

2 cups sifted flour, 1/4 teaspoonful salt, 2 level teaspoonfuls K C Baking Powder, 2 to 4 tablespoonfuls shortening. Sift together, three times, the flour, baking powder and salt; work in the shortening and add milk or water to make a dough. Roll into a thin sheet and square or round according to sausage. Lay the sausage on of dough, brush the edges with salt and fold to cover sausage. If paper bags the same as apple. Serve hot with gravy made from beef fryings as in brown gravy.

General Rules for Paper Bag cooking.

- 1. Use only bags especially for cooking.
2. Always grease the entire face of the bag for meats and pastries.
3. Lay bag on the pan seam side up.
4. Always pin the mouth of the bag securely.
5. In a gas oven place the grate of the broiler pan, or broiler pan in the upper oven.
6. Above all don't have a it burns the bag and makes it easily broken. Have a slow fire for bag cooking. Remember that in bags will cook more quickly than in the open oven.
7. All kinds of meat, fish and excellent cooked in bags, all flavor and juices being retained the meat, fish or fowl in the bag using the oven directions about 15 minutes to each pound.
8. For all kinds of pastry mend the use of K C Baking Powder especially where slow baking is required. K C is really a blend of two baking powders, one of which acts as a leavening agent; the other is inactive and is added; the two together act as a sustained leavening until the dough is thoroughly cooked, insuring light, tender biscuits, pastry and eliminating all danger of falling top.

NOTICE

So many requests are being made for lessons that have been published we have had the complete series of lessons durably bound and will be on request.

If you have missed any of the lessons, or would like to have the complete set, drop us a postal and a bound set will be promptly mailed FREE. K C BAKING POWDER MFGS., 16th and Canal Sts., Chicago.

OFFICIALS

H. HIRSCHBERG, President, D. W. SEARS, Vice President, R. R. DeARMOND, Cashier.

THE INDEPENDENCE NATIONAL BANK

Incorporated 1889.

TRANSACTION A GENERAL BANKING BUSINESS INTEREST PAID ON TIME DEPOSITS.

DIRECTORS

H. HIRSCHBERG, W. H. WALKER, D. W. I. A. ALLEN, OTIS D. BUTTLER.



Electric Toast is Perfect Toast. Electrically made toast differs from the average kind as fresh coffee from stale. It needs but a trial to convince. Equip your breakfast table with a...

GE Radiant Toaster. You reap the delight of crisp, golden toast and it is not until you have tried it that you know the difference. Let us show you how to make it. It needs but a trial to convince. Equip your breakfast table with a...

GE Radiant Toaster. You reap the delight of crisp, golden toast and it is not until you have tried it that you know the difference. Let us show you how to make it. It needs but a trial to convince. Equip your breakfast table with a...