

Wood for Sale

Big fir, 4 ft, per cord - - \$4.50
Second growth per cord, - .4.00
Delivered to any part of the city.
Put in your season's supply now.

S. COX,

Bell Phone 143.

INDEPENDENCE, ORE

NEW DRESS GOODS

We invite the Ladies of Independence and vicinity to inspect the **Price and Quality** of our large line of **Spring and Summer Dress Goods.**

We have never had a better assortment of colors; also newest weaves in black goods, all prices, but great values.

Our Grocery Department is always in the lead. Call in and see us; we assure you courteous treatment and fair dealing.

Drexler & Alexander
INDEPENDENCE, OREGON

THE HOTEL SALEM

Corner of State and High Streets, Salem, Oregon

J. M. STALEY, Proprietor

Renovated and improved throughout. A splendid location, fine meals, good service. No better place in Salem to find homelike accommodations. Remember the location—just opposite the court house on State street.

WORKS WHILE YOU SLEEP

Money works while you sleep, and works while you work, too. Money in the bank may be considered a good silent partner that will work night and day; the longer it is undisturbed, the better will be its work. We pay interest in our Savings Department at the rate of 4 per cent, and one Dollar will start the account.

UNITED STATES NATIONAL BANK
SALEM, OREGON

WATT SHIPP "THE BICYCLE MAN"

SALEM, OREGON

Athletic and Gymnasium Goods
Guns, Ammunition and Fishing Tackle
Bicycles and Repairing

Pocket Cutlery and Razors Sun Typewriter, \$10

IT'S BEST TO

CONSIDER QUALITY FIRST AND THEN QUANTITY. WHEN YOU ARE BUYING FOR THE HOUSEHOLD, THAT HAS ALWAYS BEEN OUR MOTO, AND THAT IS WHY WE ALWAYS SHOW THE BEST MEATS IN THE MARKETS. IF YOU HAVE GOOD FAT CATTLE OR HOGS WE WANT THEM AT THE HIGHEST MARKET PRICES.

WILL H. BLOCH,
INDEPENDENCE, ORE.

Both Phones.

The Independence Livery Barn

CROWLEY BROS., Proprietors.

Main St., North of Garage, INDEPENDENCE, OREGON

Best of Service day or night. Gentle horses and Responsible Drivers.

—Horses Boarded—

By Day, Week or Month. Best of Care and Feed. Prices as low as anywhere. Both Phones.

DIFFICULT TO EXTERMINATE INJURIOUS PLUM CURCULIO

Two Methods, Jarring and Spraying, Have Been Found Fairly Satisfactory—Commercial Grower Must Fight This Enemy If He Expects to Raise Profitable Crops Each Year.

In reply to the following query: "I have green gage plum trees that are full of bloom at present, but every year when they get about half size the plums get wormy and fall off. I would like to know if there is any way of preventing this," the Wallace's Farmer makes the following reply:

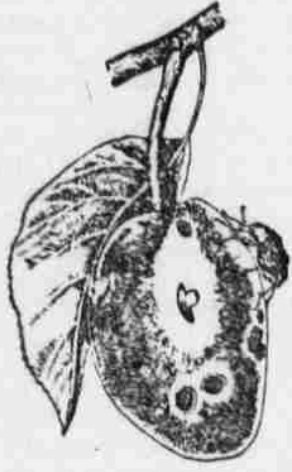
A little black beetle, which at present is feeding on the leaves and blossoms is the cause of wormy plums which drop off. When the blossoms fall this little beetle takes round bites out of the green plums. It is these little round bites that causes the lopsided and gnarly plums. If the beetle is a female, it will, in addition, make crescent shaped cuts in the green plums and insert eggs in these cuts. These eggs hatch out into the dirty-white little worm with which all who eat plums, cherries or peaches are familiar.

The only way to prevent wormy plums is to in some way kill the beetles before they have laid their eggs. This is difficult to do, but two methods have been found which are

fairly satisfactory. These are jarring and spraying. The jarring method of beetle destruction is based on the fact that the beetles "play possum" when there is any disturbance near them. Jarring is commenced just as the blossoms are falling, and is repeated every day for four or five weeks, or until no more beetles are secured. The method is to place a sheet or some other container under a plum tree, and then to strike the tree a quick, hard blow with a padded stick or mallet. The beetles fall to the sheet and may then be collected and destroyed. In large plum orchards time is saved by rigging up a sheet arrangement on a sort of a wheelbarrow, or by stretching sheets on wooden frames. In a large orchard in Georgia where peach and plum trees were jarred sixteen times in the spring over 100,000 curculio beetles were caught in this way. It is estimated

that the destruction of these beetles prevented the growth of over 13,000,000 worms in the fruit. At any rate only about four per cent of the crop was wormy, while in surrounding orchards about forty per cent. was injured. An easier though not quite such a certain way to kill the beetles is by spraying with lead arsenate. If the leaves and fruit are thoroughly covered with this poison, the beetles, in securing their food, are poisoned before they lay their eggs. In brief, the method of spraying is as follows:

Dissolve lead arsenate at the rate of two pounds to fifty gallons of water, then spray the mixture on the trees so that they are completely covered. The spraying should be commenced just as soon as the blossoms fall, and repeated three or four times at intervals of eight to ten days. Possibly this treatment sounds like it is more bother than it is worth. Perhaps it is for the farmer who has but a few plums, cherries or peaches, but the commercial grower must fight this enemy if he is to have profitable crops each year. Of course in heavy bearing years there is enough fruit for both the curculio and the grower. In such years the curculio may even do good by thinning out the fruit.



Plum Curculio.

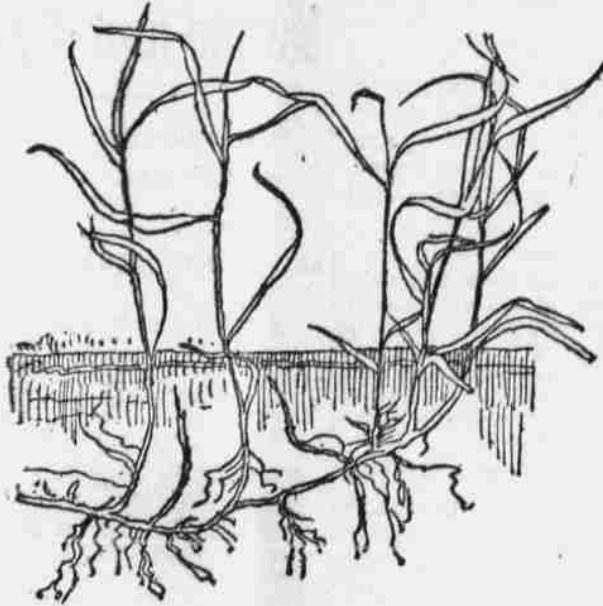
DISCOVER NEW LEGUME EFFECTS

Experiments Made With Timothy and Oats in Connection With Legume Crop at Cornell.

It is well known that a leguminous crop, when vigorous and abundant, exercises a beneficial influence on the soil and on succeeding crops. That a legume may benefit a nonlegume growing with it, by causing the nonlegume to contain a large quantity of nitrogen or protein, seems never to have been ascertained.

Experiments have, therefore, been conducted with timothy growing with alfalfa, timothy growing with red clover and oats growing with peas by Prof. T. L. Lyon and G. A. Bizzell, of Cornell experiment station at Ithaca, N. Y., to determine what effects were produced. These show that the timothy and the oats contain more protein when grown with the legume than when grown alone. The increased protein contents of the hay crop thus produced is a matter of considerable practical importance. It indicates, moreover, that the nonlegume receives during the growth of the legume a larger supply of available nitrogen than if grown alone. Other conclusions drawn from the experiments are reported in bulletin No. 294, which details the work done.

ERADICATE INJURIOUS WEED



Couch or quack grass is a most injurious weed in all kinds of soil. Root stocks must be brought to the surface

and destroyed. Rape, buckwheat or millet are good cleaning crops for late sowing.

CARE OF THE COLT IN FALL

Found Profitable to Begin Feeding Animals a Little Grain Before the Pastures Begin to Dry.

(By T. H. WHITE.)
Young colts should not be left out in the pasture until they begin to get low in flesh. It is much more profitable to begin feeding them a little grain and hay along before pastures begin to dry up, to have them in readiness to go on dry feed later without any serious trouble.

This is too often neglected and when young colts are brought in thin in flesh and they cannot be taken through the winter in the condition that they could have been this neglect is answerable.

In weaning the colt from the mare it should have the very best of care, as the change of conditions is liable to cause some trouble. While on the good summer pasture the mare gave milk that was easily digested and in taking colts from milk to dry feed it is necessary that they should receive the very best of attention. They should

be properly fed in order to prevent any bowel troubles. This rule will hold good in taking young calves through this period, and in fact will apply to all kinds of live stock, but more especially to the young of the farm which are expected to turn in a profit for the farmer the next year.

Norway Spruce in Maine.
Great importance is attached to the experiment of planting Norway spruce in Maine. This is the first attempt of the kind in New England, but experimenters believe that the future supply of the denuded states may be replaced in this way.

Desiccated Eggs.
Pennsylvania food experts declared that certain forms of concentrated or desiccated eggs are decomposed and unfit for human consumption and in some cases produce ptomaine poisoning.

Buying Stock.
Before you buy foundation stock make a close study of the breeds and their adaptability and buy the kind that are adapted to your needs. Do not buy anything that is a sheep, simply because it is a sheep.

A Good Hair-Food

Ayer's Hair Vigor, new improved formula, is a genuine hair-food. It feeds, nourishes, builds up, strengthens, invigorates. The hair grows more rapidly, keeps soft and smooth, and all dandruff disappears. Aid nature a little. Give your hair a good hair-food.

Does not change the color of the hair.



You need not hesitate about using this new Hair Vigor from any fear of its changing the color of your hair. The new Ayer's Hair Vigor prevents premature grayness, but does not change the color of the hair even to the slightest degree.

CASH FOR IDEAS

\$50 for the best Trademark
\$25 for the best Motto

Want these to help impress on the public the strength and vigor of this WESTERN company, and its unusually liberal policy contracts. Contest, which is open to everybody, closes September 30.

For particulars address
S. Bleiweis, General Agent, 834 E. Yamhill Street, Portland, or
Continental Life Insurance & Investment Company, W. H. Cunningham, General Manager, McCornick Block, Salt Lake City.

Keeley Cure ALCOHOL OPIMUM—TOBACCO

Portland, Oregon

C. Gee Wo
The Chinese Doctor
This wonderful man has made a life study of the properties of Roots, Herbs and Barks, and is giving the world the benefit of his services.
No Mercury, Poisons or Drugs Used. No Operations or Cutting.
Guarantees to cure Catarrh, Asthma, Lung, Stomach and Kidney troubles, and all Private Diseases of Men and Women.
A SURE CANCER CURE
Just received from Peking, China—safe, sure and reliable. U.S. falling in its works.
If you cannot call, write for symptom blank and circular. Inclose 4 cents in stamp.
CONSULTATION FREE
The C. Gee Wo Medicine Co.
162 1/2 First St., cor. Morrison, Portland, Or.

First Aid.
She's such a help to her clever husband. Everybody knows that he is a genius, but few are next to the fact that little wife aids him in his every activity. We got a look-in at this state of affairs at the surprise party we gave him the other night.

When the food had been discussed he was called on for a speech, of course. He arose from his seat beside his wife—he hemmed and hawed, and then he said:

"Ladies and gentlemen—I am totally unprepared, of course, and—er—being as I said totally unprepared, you must—er excuse me for being—er—unprepared. I—er—ah—I was hardly prepared for this—er" And then his wife interrupted:

"Why, darling," she said, "you knew it perfectly this morning. The next sentence begins, 'Knowing as I do.' Now can you go from there?" What helps they are, these anxious wives.—Cleveland Plain Dealer.

An Autocrat's Relaxation.
"You seem to get a great deal of pleasure out of business." "Yes," replied Mr. Dustin Stax, "after I have flitted over a golf match there's nothing rests me up like getting back to my desk, where I can have everything my own way."

NOT FEELING WELL?

You need a short course of **The Bitters**. It is fine for a weak or overloaded stomach, clogged bowels and sluggish liver. Be persuaded to get a bottle of

HOSTETTER'S STOMACH BITTERS

today. It will set things right in quick time.

**PACIFIC COLLEGE OF
CHIROPRACTIC**
The Dawn of Scientific Knowledge
Learn a Profession where the demand is greater than the supply.
Honorable, Dignified, Lucrative
Write for Literature and information. It will be to YOUR advantage.
Invalids and others needing skilled treatment, write for particulars.
409 Commonwealth Bldg., Portland, Or.

W. L. DOUGLAS

*2.50, *3.00, *3.50 & *4.00 SHOES

WOMEN wear W.L. Douglas stylish, perfect fitting, easy walking boots, because they give long wear, same as W.L. Douglas Men's shoes.

THE STANDARD OF QUALITY
FOR OVER 30 YEARS

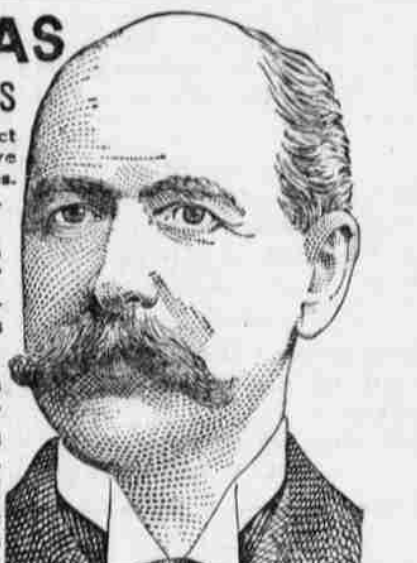
The workmanship which has made W.L. Douglas shoes famous the world over is maintained in every pair.

If I could take you into my large factories at Brockton, Mass., and show you how carefully W.L. Douglas shoes are made, you would then understand why they are warranted to hold their shape, fit better and wear longer than any other make for the price.

CAUTION The genuine have W. L. Douglas name and price stamped on bottom.

If you cannot obtain W. L. Douglas shoes in your town, write for catalog.

ONE PAIR of my BOYS' \$2, \$2.50 or \$3.00 SHOES will positively outwear TWO PAIRS of ordinary boys' shoes



**REMINGTON
UMC**
AUTOLOADING
SHOTGUN
Steel Lined
SHOT
SHELLS
Few and strong
and simple parts
Allows five shots—in lightning succession or deliberately—as desired. Three to get the cripples.
Minimum recoil. Not a single ounce of muzzle energy lost. Part of the recoil, ordinarily absorbed by shooter's shoulder is utilized to operate the mechanism.
Handles heaviest ammunition easily and accurately.
Solid Breech, Hammerless, Safe I
Remington-UMC—the perfect shooting combination.
Send for Descriptive Folder
REMINGTON ARMS-UNION METALLIC CARTRIDGE CO.
299 Broadway, New York City