

Every Thursday
52 Times a Year

THE YOUTH'S COMPANION

For Boys, for Girls, for
Parents, for the Young
in Heart of all Ages.

Packed full of entertaining and informing reading. Hundreds of Short Stories; Serial Stories. Then the Boys' Pages, the Girls' Pages, the Family Pages. The Current Events, Editorials, Humorous Miscellany. Altogether the best investment in "Good Reading."

Costs LESS THAN Five Cents a Week

Check your choice and send this coupon with your remittance to the PUBLISHERS OF THIS PAPER, or to THE YOUTH'S COMPANION, BOSTON, MASSACHUSETTS

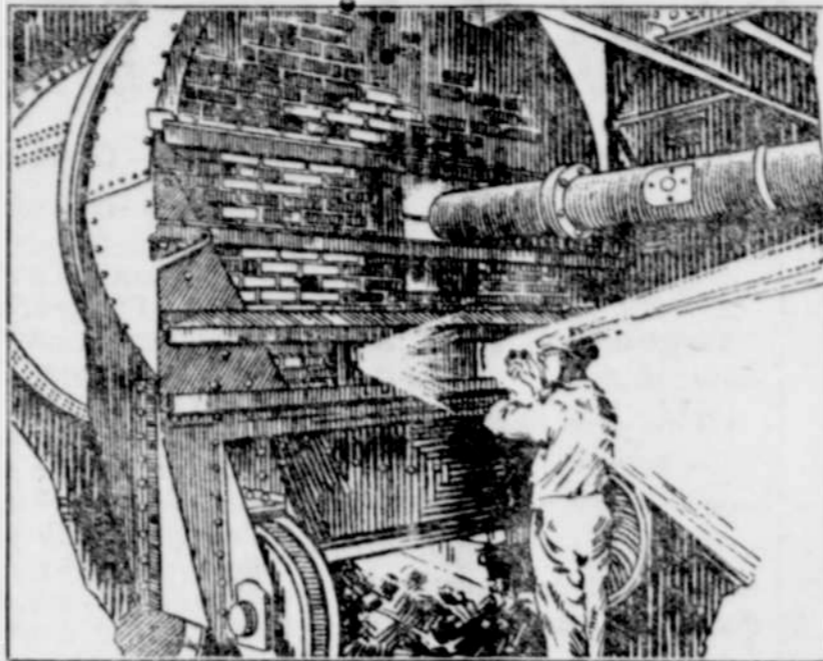
1. The Youth's Companion—52 Issues for 1923 ALL FOR \$2.50
2. All the Remaining Weekly Issues of 1922
3. The Companion Home Calendar for 1923

1. The Youth's Companion (including all the above) \$2.50 BOTH FOR \$3.00
2. McCall's Magazine, 12 Fashion Numbers 1.00



CEMENT IS PRODUCT OF FIERY FURNACE

Fierce Heat Required to Fuse Raw Materials



TREMENDOUS forward strides in American industry have developed in each branch some particular spectacular phase that illustrates graphically this development.

In steel manufacture it is the operation of the open hearth and blast furnace. In the manufacture of glass it is the glass blower who holds the interest. Shipbuilding finds its focal point in the launching of some ocean greyhound. In the manufacture of portland cement it is the super-heating of finely ground material in gigantic kilns.

Kilns Tall as Twenty-Story Building.
The accompanying illustration shows one end of a kiln used in modern cement plants. In many cases its weight will exceed 275,000 pounds, empty. The foundations that support it are heavy enough to hold a ten-story building. One of the largest kilns, if set on end, would be as tall as a twenty-story office building and a touring car could run through it with room to spare.

Not only in massive proportions is

OREGON NEWS NOTES OF GENERAL INTEREST

Principal Events of the Week
Briefly Sketched for Information of Our Readers

Farquhar's Island, a ten-acre island lying within the city limits of Roseburg in the south Umpqua river, is to be purchased by the Roseburg Elks lodge and will be converted into an athletic field, playground and park. Although 595 accidents were reported

to the state industrial accident commission during the week ended October 19, there was but one fatality. The man who lost his life was Weeden Mosher of Seio, a sawmill employe.

Fred A. Baker, Klamath Falls attorney, has taken charge of the Klamath Indian agency, succeeding Walter G. West, who was discharged following investigation by the Indian bureau on charges of improper conduct.

Shamrock butter, manufactured at the Lower Columbia Dairy association's Astoria creamery, won the highest score at the international dairy show held in Minneapolis, Minn., on October 11 and 12, according to a message received.

Irrigation activities in central Oregon were increased when the United Contracting company began the replacement of a large amount of old wooden flume on the Tumalo project with an earth canal. Excavation will reach approximately 20,000 yards.

Unstated approval of the action of the World War veterans' state aid commission in the recent removal from office of H. J. Overturf and O. B. Hardy, appraisers for Deschutes county, charged with malfeasance, was voiced by the special committee of investigation named by the American Legion.

Watkins Davis, Klamath Indian charged with second-degree murder in connection with the death of Oliver Jefferson, Klamath Indian who died as a result of a blow over the head with a billiard cue, delivered by Davis about a year ago, was acquitted at Klamath Falls after the jury had deliberated 20 minutes.

Snow to the depth of 17 inches has fallen on the road at the summit of the Cascade mountains on the McKen-

zie highway, according to word telephoned to the office of the Cascade national forest in Eugene. The highway is closed to traffic, as it would be impossible for cars to buck through the deep, wet snow.

More than 8000 barrels of cement are awaiting shipment at the plant of the Beaver Portland Cement company at Gold Hill, and cannot be moved on account of the car shortage.

A considerable immigration of wild geese, on a scale of tens of thousands, into the region around the upper Columbia river, has been reported to Game Warden Burghdoff and seems to point to a great fall for geese hunters.

The 1923 advisory budget, completed by the Baker county budget board, carries a \$3000 appropriation for a county farm agent. The only other new item is \$500 for the Louise home in Portland. The budget totals \$210,141.65.

More than 8000 barrels of cement are awaiting shipment at the plant of the Beaver Portland Cement company at Gold Hill, and cannot be moved on account of the car shortage.

A considerable immigration of wild geese, on a scale of tens of thousands, into the region around the upper Columbia river, has been reported to Game Warden Burghdoff and seems to point to a great fall for geese hunters.

The 1923 advisory budget, completed by the Baker county budget board, carries a \$3000 appropriation for a county farm agent. The only other new item is \$500 for the Louise home in Portland. The budget totals \$210,141.65.

Let Us Print
Your Sale Bills

Has Your
Subscription
Expired?
Come in and
renew it next
time you are
in town.

Butter Nut and Holsum breads

at the
MONMOUTH BAKERY
Mrs. M. Cornelius, Prop.

The Story Of Good Old Indian Summer.



Uneven hangs Hems



The uneven hem line features this new Poiret coat. It is buckled on the side, tied from the back and is embroidered with red and black. It is stylishly conservative.

Cause and Effect

Taste is a matter of
tobacco quality

We state it as our honest belief that the tobaccos used in Chesterfield are of finer quality (and hence of better taste) than in any other cigarette at the price.

Liggett & Myers Tobacco Co.

Chesterfield
CIGARETTES
They Satisfy

7 billion!
Over
7 billion
Chesterfields
are smoked
every year—
20 million
every day

What does
what good tobacco
are do!

Chesterfield
CIGARETTES
They Satisfy

LIGGETT & MYERS TOBACCO CO.

HOME SWEET HOME

Hard lines,
Oscar, hard
lines.
— by
Terry
Gilkinson



HOME
HABITS,
HAVE YOU A
HOME HABIT
AROUND YOUR
HOUSE? SAY
IT TO US. WE
WILL PRINT
IT. J.A.H.
SAYS HIS WIFE
HAS A HOME
HABIT. "SHE
ALWAYS LOOKS
UNDER THE BED
TO SEE IF
ANY BURGLARS
ARE THERE?"