

# NOW IS THE TIME TO VISIT THE GREAT EXPOSITION IN SAN FRANCISCO

**Come Along Folks;  
See the Fair Early**

THE greatest exhibition the world has ever known, the great Panama-Pacific International Exposition at San Francisco, is today in full blast. Thousands of amazed visitors are viewing the world's most remarkable achievements in the industries, sciences and the applied arts. Visit the Exposition today and you can talk with your friends over the long distance telephone and hear

their voices far louder than they were spoken into the transmitting telephone. The voice is amplified by the marvelous Audion amplifier, invented by Lee de Forest. To put it untechnically, through the Audion amplifier the voice vibrations are increased in intensity by passing through a series of heat waves. A man in New York city today can talk to an audience in the Palace of Liberal Arts at the Panama-Pacific In-

ternational Exposition. It is possible to increase the intensity of the speaker's voice to such an extent, if necessary, as to fill a whole hall.

Among Japan's exhibits is shown the development of the pearl industry through the raising of a type of pearl developing oysters. The plow used by Daniel Webster is shown. In the German section Dr. Herman Lieber, the

famous chemist, portrays the utility of radium and its derivatives.

Strange wild tribes from French Somaliland, on the Zone, the great amusement section, give marvelous exhibitions of their prowess with the spear. These warriors are of the same intrepid type as the Algerians serving in the French army. The world's woman champion rifle

shot, Princess Winona, gives marvelous exhibitions of her skill.

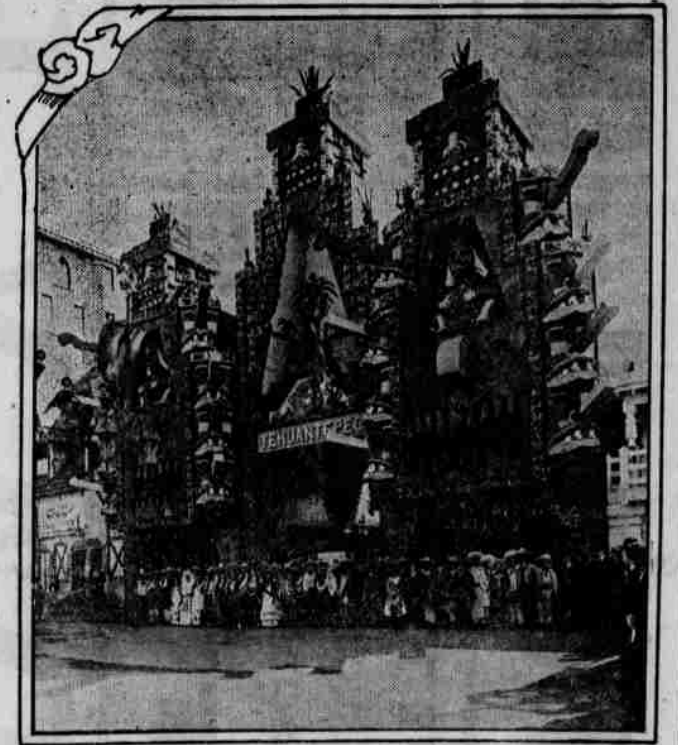
Dancers of all nations reproduce the famous Turkish and Egyptian dances which fascinated thousands at the great world's Columbian exposition at Chicago and display the latest steps practiced in the royal courts of the Orient.

In the aerospace visitors enter a car

resembling a two storied houseboat and are swung 264 feet in the air at the summit of a lofty inverted pendulum.

The Exposition offers the most comprehensive epitome of the world's progress ever presented. The man from any land who goes there may say, "I am on my native soil." The remarkable photos on this page show scenes never before presented from the Exposition.

## Tehuantepec Displays Native Art at the Big Panama-Pacific International Exposition, San Francisco



This photograph shows the beautiful Tehuantepec Village on the Zone, the \$10,000,000 amusement section, at the Panama-Pacific International Exposition. Here skilled craftsmen from faraway Tehuantepec show the manufacture of their native textiles and potteries.

GLOBE trotters and officials from all parts of the world who have visited the Panama-Pacific International Exposition grounds at San Francisco have expressed their astonishment and delight at the wonders already revealed there. "The most stupendous undertaking of the kind in history," "The furthest advanced toward completion" and "The most beautiful site and color effect of any exposition in the world" are a few of the expressions from men who are familiar with all of the great world expositions of modern times.

The exhibit palaces are of vast size. In the Palace of Machinery 20,000 people in masquerade costumes danced all night beneath the illuminated arches over nine acres of floor space. Lincoln Beachey flew an aeroplane in the same building.

No exposition has ever attracted such attention abroad. Thirty-six of the world's nations have accepted America's invitation to participate and will present on an elaborate scale exhibits revealing their progress. The participating nations are as follows: Argentina, Australia, Austria, Bolivia, Brazil, Bulgaria, Canada, Chile, China, Costa Rica, Cuba, Denmark, Dominican Republic, Ecuador, France, Great Britain, Guatemala, Haiti, Holland, Honduras, Italy, Japan, Liberia, New Zealand, Nicaragua, Panama, Persia, Peru, Portugal, Salvador, Siam, Spain, Sweden, Turkey, Uruguay and Venezuela.

Work is being rushed on the splendid illuminated towers, fountains and festival courts, where will be shown the masterpieces of architectural, landscape and sculptured decorations and the wonderful outdoor mural paintings, some of them 100 feet long and executed by eleven of America's greatest artists. The garden and landscape effects are almost completed at this writing, over a million rare trees, flowering shrubs and plants being used.

The Canadian Palace.  
The New Zealand Pavilion.  
The Australian Pavilion—visit the aviary and "zoo" in the adjoining gardens.

Reproduction of Sir Francis Drake's account of his discovery of New Albion (now California), exhibited in the Marin county section of the California building. Panoramas of Yosemite and leading California cities, also in this building, are very good.

In the Agricultural building—the comprehensive New Zealand exhibit; models of the finest boats of the Union Steamship Company.

In the Transportation building—the English shipping display by the International Mercantile Marine Company. Rest at the reception parlors of Thomas Cook & Son, tourist agents.

The exhibit of the Italian Swiss Colony in the Food Products building—a grapevine with illuminated clusters, prettier than a Christmas tree. Many well known English firms have exhibits in this building.

The Canadian Pacific Railway building, east end of the Marina; good illustration of Canadian rural life and fine motion pictures.

The Southern Pacific Railway building, near Fillmore street entrance; best scenic exhibit, next to Canada's, on the grounds.

## HANDSOME BOOK ON PANAMA-PACIFIC INTERNATIONAL EXPOSITION AND PANAMA CANAL REGION FREE.

A HANDSOME book of sixty pages, illustrated profusely in colors and giving detailed descriptions of the Panama-Pacific International Exposition to be held in San Francisco from Feb. 20 until Dec. 4, 1915, and of the Panama canal and the canal region, will be mailed by the Panama-Pacific International Exposition free of charge to all inquirers. Write to the Manager, the Bureau of Publications, Panama-Pacific International Exposition, Exposition building, San Francisco, for the booklet.

## Marvelous Aerospace at the Panama-Pacific International Exposition, San Francisco, Raises Amazed Visitors 264 Feet



FOR the seeker of amusement there is opportunity a-plenty in the great mechanical achievement, the aerospace, on the Zone, Panama-Pacific International Exposition, San Francisco. The aerospace is built on the order of a giant crane of a novel and intricate design, with a seating capacity of 100 and standing room for twenty more. The car is perfectly balanced, and perfect safety and a jarless ride of ten minutes are assured to passengers who enjoy this trip of 264 feet into the clouds. This is four feet higher than the Ferris wheel. Two motors control the ascent and descent in conjunction with the counterbalance of this huge car, and when it reaches its extreme height it begins to swing slowly around on the series of wheels at its base, giving the passenger a view of the surrounding country from every point.

## Interior of Superb Siamese Palace at the Panama-Pacific International Exposition, San Francisco



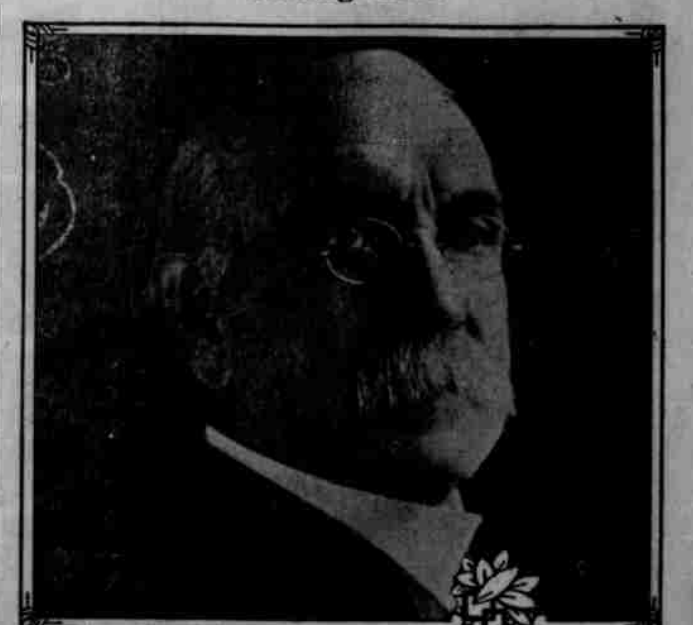
## Toyland Grown Up Wonderful Feature at the Panama-Pacific International Exposition



SCENES in famous Toyland concession on the Zone at the Panama-Pacific International Exposition, San Francisco. In this great amusement device, which covers fourteen acres, toys are reproduced upon a gigantic scale, the figures here shown being eighty feet in height.

A HANDSOME book of sixty pages, profusely illustrated in colors and giving detailed descriptions of the Panama-Pacific International Exposition to be held in San Francisco from Feb. 20 to Dec. 4, 1915, and of the Panama canal and canal region, will be mailed by the Exposition free of charge to all inquirers. The booklet is intended as a general guide to prospective visitors and will also contain information concerning the great engineering feat which the Exposition is to celebrate. Write to the Manager, Bureau of Publications, Panama-Pacific International Exposition, Exposition Building, San Francisco, for booklet.

## Colonel George W. Bain, Noted Lecturer, Coming Here



THIS orator is one of those who can move the most impassioned audience to tears and back to laughter. He amuses and he inspires. He is from the south, claiming Kentucky as his home, and no place loves him more than his own people. Hon. Champ Clark says of him: "I heard Colonel Bain at the Fort Smith (Ark.) Chautauqua, when he swayed his hearers as the storm king sways the forest. In that lecture was one of the most eloquent passages I ever heard pass human lips. The way he played upon the harp strings of the human heart was a revelation to me." Colonel Bain is one of the lecturers to be heard at the Chautauqua here this season.