

Polk County Observer

THE HOME PAPER

OBSERVER PRINTING COMPANY

Volks & Parcells, Owners.

Office Phones Main 19

Business office Main 19-2

Press room Main 19-2

GERALD VOLK, JAS. I. PARCELLS, Managers, Editor.

Entered as second-class matter in the Postoffice at Dallas, Oregon.

Subscription Rates: One Year \$1.50, Six Months .75, Three Months .40

Strictly in advance.



The way to build up Dallas is to patronize Dallas people.

OPPORTUNITY

We often hear the statement made that the opportunities of the past are gone and that there is not now any such chances to be found where a man can make fortunes like those made in the past.

There is no reason to expect that the chances of yesterday will repeat themselves today, but each day there are opportunities presented whereby you may find just reward for your efforts provided that you are competent to use the opportunity to advantage.

Right now Polk County offers many opportunities which if properly handled will make thousands of individuals independent. This can not be accomplished without labor, but if you want to work, if you will exert all of your energies and are not in too big a hurry to reap the harvest you will be able to find many opportunities.

Opportunity is not like a creditor, it is not always pursuing you, it will not get you in the corner and force you to give it your attention, it will not be presented to you in the shape of guilt edged security.

The men of the past who have acquired fortunes took hold of the opportunities of their day and we have never heard of any of them requiring a guarantee of success, they went to work and worked the opportunity which they had in hand and by perseverance, they at last received the reward of a work well and faithfully done.

Thousands of acres of rich and fertile land in Polk County present opportunities to any person who will be willing to properly put to use these lands.

You can choose for yourself any kind of a crop, then it will be up to you to properly put the soil in such condition that it will produce for you the best results, you must not be satisfied with the mere purchase of the soil, it will require the use of both muscle and mind to bring your crop independence.

Don't get the idea that success follows every effort, but go to work to win in the same spirit that if success does not begin to assert itself right away that the effort made has been lost, very few undertakings worth while have ever been executed and brought to perfection on first trial, but on the other hand it took hard work to bring success.

What we need in Polk County is more opportunity users and less opportunity kickers, for the opportunities are here ready to be used. Did it ever occur to you that many a kicked and knocked enterprise has finally been pushed to success through proper management.

Don't kick every opportunity in the face as it comes to you but take

hold of and use it to your own advantage and advancement, and you will find that in time you will be rewarded with success.

CHIEF FEATURES OF PRESIDENT'S TRUST LEGISLATION PLANS.

1. Effectual prohibition of the interlocking of directorates.

2. A law to confer on the Interstate Commerce Commission the power to regulate the financial operations by which railroads are supplied with the money they need for their proper development and improved transportation facilities.

3. Definition of the "many harmful restraints of trade" by explicit legislation supplementary to the Sherman law.

4. Creation of a commission to aid courts and to act as clearing-house of information in helping business to conform with the law.

5. Penalties to fall on individuals responsible for unlawful business practice.

6. Prohibition of holding companies.

7. Giving to private individuals the right to found suits for redress on facts and judgments proved in Government's suits, and providing that statute of limitations should run only from the date of conclusion of the Government's action.

The message of President Wilson might well be called one of "Good Cheer" for in his recommendations, he does not advocate any destructive process, but is seemingly following up the plans of past administrations in amending the "Sherman Act" in such a way that it will cover present needs.

OFFICERS TO BE ELECTED THIS YEAR

Here is a list of officials to be elected from the state at large this year, and the salary of each.

United States Senator, at \$7,500 a year.

Governor, at \$5,000 a year.

Members of Congress from First, Second and Third districts, at \$7,500 a year.

State Treasurer, at \$4,500 a year.

Attorney-General at \$3,600 a year.

Four Justices of Supreme Court, at \$4,500 a year.

State Superintendent of Public Instruction, at \$3,000 a year.

State Labor Commissioner, at \$3,000 a year.

State Engineer, at \$3,000 a year.

One railroad Commissioner, at \$4,000 a year.

County officials will also be elected this fall. You want to take part in this election, so it will be your duty to register as soon as possible, get posted on candidates and be ready to begin right by taking an active part in the primaries in May.

HE VOTED FOR TAFT, MAYBE?

A neighboring village politician was a Portland visitor recently and while walking near the Post Office, he met an able bodied man who held out his hand and said, Well we voted for Taft and lost, didn't we? He was a stranger to our neighbor. How do you know I voted for Taft was the answer. Oh I can tell—say friend I want you to lend me a quarter—I am a good mechanic out of a job and I am hungry. He got the quarter. We Taft men have got to help one another until better times come. There is no question how that fellow will vote next time, he is having a taste of the real good times promised.

ALL AROUND

Gleanings of Interest From our Exchanges and Elsewhere.

At a recent meeting of the managers of the Oregon State fair, arrangements were made for an eugenics exposition this year. The age limit will be the same as last year, from 12 to 48 months, and the boy and girl winning the championship prizes will be rewarded by a trip to San Francisco exposition in 1915, including all expenses for one week. O. M. Plummer,

IS'NT THIS THE KIND OF LIFE INSURANCE YOU HAVE BEEN LOOKING FOR?

IF YOU DIE IT COSTS NO MORE THAN ORDINARY LIFE

IT IS MORE PROFITABLE THAN ENDOWMENT IF YOU LIVE

ISSUED SOLELY BY

COLUMBIA LIFE

AND TRUST COMPANY

OF

W. M. LADD, PRESIDENT. PORTLAND, ORE. T. B. WILCOX, VICE PRES.

M. M. JOHNSON, SECRETARY AND ACTUARY

S. P. LOCKWOOD, V. PREST. & GENL. MANAGER

WILLIAM F. STILZ, SUPERVISOR OF AGENCIES

C. S. BLISS, Genl. Agent W. A. ANDERSON, Dist. Agt
SILVERTON, OREGON. DALLAS, OREGON.

manager of this department, states he has served notice on the whole United States that Oregon is going to send to San Francisco two of the finest babies and he expects, if the other states accept the challenge, to see there a collection of 100 of the most perfect children in the world.

Newberg is getting after the Oregon Electric and "The Empire Builder," because two years ago the company gave the city a bond in return for a franchise, in the sum of \$10,000, which was to be paid the city if cars were not operated in the city in accordance with the terms of the franchise, within 18 months. The time has elapsed and the cars are not running, nor is any beginning made on the work of constructing a road in the city. The city consequently wants the Oregon Electric to come through with its \$10,000. It can use the money.

Peter Kilkenny, who has a record for escaping from the Boys' Industrial School at Salem, has been returned to the school after his sixth "getaway." Although only 13 years of age, the lad is by far the most elusive charge the authorities of the institution have ever known. After three days of freedom this time he was captured by Policeman Flake just after he is believed to have robbed a house. He had in his possession articles which had been taken from the house.

The gas engine has lately been put to a novel and promising use. By means of a propeller working in the air it is made to drive boats over shallow inland waters. Streams too shallow for old-fashioned navigation are made available for commerce by this device. It will also be useful on canals, where swells are destructive to the banks. A boat driven by an air propeller moves through the water with very little disturbance.

A setback was given woman suffrage last Saturday by the Democrats of the house rules committee. In executive session the majority in the committee voted practically unanimously against a favorable report on a resolution to create a new special house committee on woman suffrage.

Twenty-six patents to timberlands near Sumpter, in Baker County, and valued at more than \$75,000, belonging to the Hewitt Land Company, a holding corporation for Henry Hewitt, Jr., a Tacoma millionaire, were ordered forfeited to the government Monday by Federal Judge Bean, on the grounds that fraudulent methods were used in securing them.

Albany got rid of Rimer's L. W. W. army last Friday by escorting them out of town with an armed force. They had a hard time getting the army started and had the fire department out but before the water was started the army moved out.

The Lebanon council having refused to grant a franchise to mill owners to string wires and supply the city with electric light, the citizens have taken the matter up by initiative and have filed a petition requiring the matter to be submitted to the people.

Six old Roman coins, valued by the University of California at \$5,000 apiece, were overlooked last Saturday night by thieves, who broke into the coinmense at the university library. Other coins having a value of about \$50 were stolen.

The Christmas edition of the Coos Bay Times issued January 8th, was a genuine booster paper and showed a prospective of what they expected to be in 1915. We hope they will not be disappointed, much advancement will be made all over Oregon by that date.

The proprietors of the Saturday Evening Post now boast of a paid circulation of 2,107,000 copies a week for that publication. At 5 cents a copy, over \$105,306. "Sum" business, that.

Eleven deaths in New York proper and fifteen in the greater city were accounted for last Thursday, as directly due to the cold wave.

A bill was filed in the House of Representatives Monday, appropriating \$5,000,000 a year for federal aid to road construction in the various states in proportion to the rural delivery and past routes, in each state. Oregon's share of this fund is figured at \$121,000.

During the past year Monmouth, Oregon has spent \$110,000 for local improvements, including a \$40,000 high school and street improvements costing \$22,000.

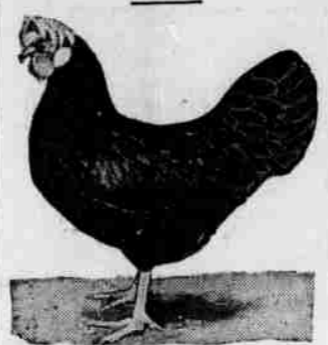
The Only One in County. The Dallas Mercantile Company has just received an automatic improved Elliott button machine. This machine is used to sew buttons on shoes and is a very complicated one. It sews the buttons on with wire, and when one is on, another is ready to fall in place. It is the only automatic machine of that kind in the county.

At Salt Creek High School. "Paddle Your Own Canoe," play to be given at the Salt Creek High School, at 7.30, January 31st, 1914, followed by a basket social. Everybody cordially invited. Remember the date and come!!!

Legal blanks for sale at this office.

PRACTICAL TALKS BY GOVERNMENT FARM EXPERTS

No. II.—Use of Foreign Breeds. Selecting Good Breed of Chickens.



(Official News Summary of Up to Date Matters Compiled by the United States Department of Agriculture.)

THE United States department of agriculture is distributing among agricultural institutions 100,000 foreign plants of miscellaneous types, among which are the Chinese wood oil tree, the Chinese jujube and the papaya.

The Chinese wood oil tree produces one of the best drying oils known. It is stated that the use of this oil has already had a revolutionary effect on the varnish industry of the United States. It has largely taken the place of kauri gum and has made possible the manufacture of a quicker drying varnish which is less liable to crack than that made from kauri gum, and it has been found of special value in waterproof priming for cement. Experiments have shown that the trees can be grown successfully in the United States. They are being cultivated near Tallahassee, Fla.

The Chinese jujube produces one of the five principal fruits of China and has been cultivated for at least 4,000 years. It is highly esteemed in the Celestial Kingdom and has hundreds of varieties. The tree is being successfully grown at Chico, Cal., and the fruit has been candied in sirup and dried. Many of the varieties preserved have almost the size, shape, color and flavor of dates.

It is a fruit as delicious as dates and capable of being grown hundreds of miles farther north than the date palm. Trees grown in Washington were entirely uninjured by temperatures 20 degrees below zero. Besides its cold resistance, the jujube has the great advantage of being almost immune to frost in spring because the leaves and flowers appear very late in the season. It is also a drought resisting plant. There are many wild species on which it can be grafted and which will grow in semiarid territory or on alkali land.

It is doubtful whether there is any fruit tree in the world that grows as rapidly as the papaya or that yields in so short a time. There is probably no better known fruit tree in the tropics than the papaya, which is now well distributed throughout the frostless regions of the globe. The tree bears a delicate, wholesome and delicious fruit especially valuable for invalids and others with weak digestion. There is constant demand for good varieties of this fruit in the south. It grows to perfection in southern Florida, and since it has been successfully grafted, varieties of standard excellence can be cultivated. The juice of the fruit furnishes the papain of commerce, which is used extensively as a digestive.

Lessons in Home Canning.

To eliminate waste and save surplus, to encourage greater production, to teach labor and time saving in home canning, to arouse greater interest in efficient and economic home management, to teach relation of home management to farm and business management and to establish a more direct route for foodstuff from soil to stomach.

The above are reasons set forth by the department of agriculture in the interest of home canning, and here are some of the results as advanced by the department:

Greater human efficiency through a properly fed body; fruit, vegetables and greens as substitutes for patent medicine; greater joy in living and a longer life; fruit and vegetables for human diet every day, and the use of fruit and vegetables to keep out of graves and porchouses.

Selecting Good Breed.

"Be sure that the male at the head of the flock is pure bred. Pure bred poultry means uniformity of products. Uniformity of products means increased profits if products are properly marketed," advises the United States department of agriculture to farmers and poultrymen in order that they may get the most profitable results from poultry raising.

"The Mediterranean or egg breeds are Leghorns, Minorcas, Spanish, Blue Andalusians and Anconas; the American or general purpose breeds are Plymouth Rocks, Wyandottes, Javas, Dominique, Rhode Island Reds and Bunkers; the Asiatic or meat breeds are Brahmas, Cochins and Langshans, and the English breeds are Dorplings, Orpingtons and Redcaps. For farm use the American breeds are probably the best."

"Have everything ready beforehand and start your hatching operations early in the year," is the advice of the department of agriculture in connection with the raising of chickens both naturally and artificially. "A well ventilated cellar is the best place to operate the incubator. See that the incubator is running steadily at the desired temperature before filling it with eggs. Do not add eggs to a machine during incubation. Turn the eggs twice daily after the second and through the eighth day. Cool the eggs once daily, according to the weather, from the sev-

enth through the eighteenth day. Turn the eggs before caring for the lamp. Keep the lamp and wick clean. Test the eggs on the seventh and fourteenth days. Do not open the machine after the eighteenth day until the chickens are hatched. Eggs saved for hatching purposes should not be subjected to high or low temperatures.

"The hen is the most valuable incubator for the farmer if she is given proper care and attention. In cold weather place from ten to thirteen eggs under the hen; in warm weather from thirteen to fifteen.

"Always test the hen on china or nest eggs before setting. Use insect powder freely to exterminate lice when necessary. February, March and April are the best months for hatching. If several hens are set in one room it is desirable to confine them in good nests. Straw and hay make good nesting material."

"Broody hens should be moved to the permanent sitting nest at night. Whole corn is a good feed for sitting hens. Water, grit and dust baths should also be provided. All eggs should be tested by the seventh day, which often makes it possible to reset some of the hens.

"To mark the chickens as soon as they are hatched. This will enable you to tell their ages later. Powder the chicks occasionally during the first eight weeks. Chicks should not receive feed until they are thirty-six hours old.



A VERY SICK HEN

In cool weather ten to thirteen chicks are sufficient for one hen, while in warmer weather fifteen to twenty can be cared for successfully. Never mix chicks of different ages. Confine the hen until the chicks are weaned. The coop for hen and chicks should be well ventilated, easy to clean and of sufficient proportions to insure comfort.

Common Diseases and Treatment.

"All diseased birds should be isolated," states the department of agriculture in discussing the different diseases so common among chickens and their remedies. The several diseases and their cures as set forth by the department are:

Colds and Cough.—Disinfect the drinking water as follows: To each gallon of water add the amount of potassium permanganate that will remain on the surface of a dime.

Canker.—Sprinkle a little flowers of sulphur in the mouth and throat of the bird and put some chlorate of potash in the water; also carefully remove the exudate with the aid of warm water and apply a 2 per cent solution of creolin to the diseased tissues.

Chicken Pox.—Apply a touch of iodine and carbolic vaseline to each sore.

Gapes.—New ground and vigorous cultivation will often remedy this trouble.

Scaly Legs.—Apply vaseline containing 2 per cent of creolin to the affected parts and after twenty-four hours soak in warm soapy water. Repeat treatment until cured.

Diarrhea in Hens.—Low grade wheat flour or middlings is good for this trouble; also give teaspoonful of castor oil containing five drops of oil of turpentine to each fowl.

Bowel Trouble.—Well boiled rice mixed with a little charcoal will often check this complaint. Dissolve fifteen grains of crude castor oil in each gallon of drinking water.

Demonstration Work in South.

As the result of grass demonstration work conducted by the department of agriculture during the past few years, southern farmers are beginning to grow crimson and bur clover and other legumes very extensively, and the demand for seed from the south at present has been unprecedented. From reports received from agents of the department, it was believed that more than 100,000 acres would be sown in crimson and bur clover and vetch in the southern states in the fall of 1913 on farms where none of these crops have ever been grown before.

Leopards is rapidly spreading over Louisiana, south Mississippi and Arkansas, and the department has had some very successful demonstrations with this crop in south Alabama during the year.

Trial by Jury.

The establishment of the trial by jury runs back even prior to the time of Alfred the Great. He is said to have organized juries of twelve men as now in practice, but even earlier six Welsh and six Anglo-Saxon freemen acted as a jury where there was a dispute between Welsh and Saxons.

Clear Inference.

"Jim told me a riproaring joke that was played on some member of your club last evening. Were you there?" "Yes, I was there; it was an abominable, firefetched—"

"Oh! Jinx did not tell me that you were the man it was on?"—Houston Post.

Strangeness of the Sex.

A woman can become highly excited over the fact that a bride is starting out in married life with machine hemmed suitings—Cincinnati Enquirer.

Weight of Snow.

A cubic foot of newly fallen snow weighs five and one-half pounds and has twelve times the bulk of an equal weight of water.

I wasted time, and now time doth waste me.—Shakespeare.

Pure Food Grocers

When you purchase groceries at our store you can rely on their Purity and Cleanliness

We guarantee our Butter and Eggs as Strictly Fresh

Our Canned Goods are of the 1913 pack

Our Teas and Coffees are of good quality and reasonable in price

Free Delivery

Holman & Boydston

Phone 1271

Dallas, Oregon

FLESHER Meat Market

WE PAY THE HIGHEST CASH PRICE FOR ALL COUNTRY PRODUCE

PHONE 13

Dallas, Oregon

Dallas Iron Works

Mechanists—Foundrymen—Pattern-Makers

SAWMILL WORK A SPECIALTY

We are prepared to do any kind of Iron and Brass work. Lumber trucks and Stock work on hand. We make the best and cheapest Stump Puller on the market. Prices reasonable.

City Transfer

W. R. COULTER, Proprietor

The world moves itself; We move anything else

Piano and Furniture Moving a Specialty

Stand—Kersey's Confectionery. Phone 1061

Residence Phone 1202

SHE IS COMING WHO?

Open your ears and widen your eyes and you will find something to put you wise.

Rev. Edith Hill Booker, the State President of the Women's Christian Temperance Union of Oregon will give a Free Lecture in the High School Auditorium, Tuesday, January 27th, at 8 p. m. Rev. Booker is an able speaker and brings a very interesting message.

COME AND HEAR HER!

YOUR HAIR NEEDS PARISIAN SAGE

Unwisely, matted, colorless, scraggy hair made fluffy, soft, abundant and radiant with life at once. Use PARISIAN SAGE. It comes in 50c bottles.

The first application removes dandruff, stops itching scalp, cleanses the hair, takes away the dryness and brittleness, increases the beauty of the hair, making it wavy and lustrous. Everyone needs PARISIAN SAGE. CONRAD STAFRIN

West Side Marble Works

G. L. HAWKINS, Proprietor.

MONUMENTS, HEADSTONES AND CURBING.

A Complete Line of All Latest Designs.



When We Hand You Our Estimates

of the cost of the lumber you require you can depend upon it that the figures will be as low as first-class, well seasoned lumber can be sold for honestly. If you pay more you pay too much. If you pay less you get less either quality or quantity.

Willamette Valley Lumber Co.

LODGE DIRECTORY

UNITED ARTISANS—Dallas Assembly, No. 46, meets on first and third Mondays of each month at Woodman hall. Visiting members made welcome.

W. J. WHITE, M. A. WILLIS SIMONTON, Secretary.

WOODMEN OF THE WORLD—Dallas Camp No. 200 meets in W. O. W. Hall on Tuesday evening of each week. J. F. Driscoll, Consul Com. F. J. Craven, Clerk.

A. F. & A. M.—Jennings Lodge, No. 9, meets second and fourth Fridays of each month, in Masonic hall on Main street. Visiting brethren welcome.

W. R. ELLIS, W. M. WALTER S. MUIR, Secretary.

Professional Cards

DENTIST AND ORTHODONTIA

DR. CLINTON L. FOSTER, New City Bank Building. Office Phone 931.

DALLAS ——— OREGON.

DENTIST

M. HAYTER

Dallas National Bank Building Dallas Oregon

Olive Smith-Bicknell

Teacher of PIANO and ORGAN Studio 712 Oak St. DALLAS ——— OREGON

Dr. Louis G. Altman

Homeopathic Physician, General Practice. Special attention to Asthma, Drupay, Gall Stones and Rheumatism. Office and Res. 206 N. Liberty St. Phone Main 147. SALEM, ORE.

Chiropractor Phone 1304

DR. D. G. REMPEL

Nerve Specialist and Spinal Adjuster Office, 513 Church Street, near depot. Consultation and Examination Free. DALLAS, OREGON

DENTIST

B. F. BUTLER

Office over Fuller Pharmacy. Office hours from 9 to 12 a. m.; 1 to 5 p. m. Dallas Oregon

Phone 1183-2

R. L. CHAPMAN

FUNERAL DIRECTOR AND EMBALMER Calls promptly answered day or night Dallas, Oregon.

ED. F. COAD, Attorney at Law, Probate Cases a Specialty, Room 20, National Bank Bldg.

G. O. HOLMAN