

ROOSEVELT MOVEMENT DYING OUT

Reports from Every Section of the Country Show Third Term Candidate Is Daily Losing Ground.

REPUBLICANS ARE RETURNING TO THE PARTY

The Effort to Organize a Bolt Has Completely Failed, and President Taft Is Gaining Because the Tide Is Now Turning in His Direction.

POPULAR VERDICT AGAINST ROOSEVELT.

In every state in which the people have had an opportunity to express their sentiment since the nomination of President Taft, the verdict has been adverse to Colonel Roosevelt and has demonstrated the increasing disintegration and eventual collapse of the third party. The results of the regular and primary elections thus far held offer convincing evidence of the steadily decreasing strength of the third term candidate.

REGULAR ELECTIONS.

VERMONT—The Roosevelt ticket polled only about 15,000 votes and was third in the race.
MAINE—There was no Progressive ticket and the united Republicans overcame a Democratic plurality of nearly 9,000 of two years ago, elected their gubernatorial ticket by a plurality of 4,000 and gained a congressman.

PRIMARY ELECTIONS.

MICHIGAN—The third term party had a full primary election ticket in the field but polled only about 8,000 votes out of a total of 150,000. In one county where the election officers were asked for 8,000 Roosevelt tickets only 189 votes were cast.
MINNESOTA—The Republicans nominated their governor and United States senator, together with other officers. The third party ticket made no showing.
WASHINGTON—The Roosevelt ticket received about 25,000 votes out of 300,000. The Republican vote was greater than the Roosevelt and Democratic vote combined.
COLORADO—The Republicans nominated their gubernatorial ticket over the Progressive opposition.
CALIFORNIA—Last May the Roosevelt vote in the primaries showed 77,000 majority. In the September primaries the Roosevelt majority was less than 3,000.

ROOSEVELT'S STRENGTH IS FALLING OFF

Washington Republicans Outnumber Democrats and Third Termers Combined.

Seattle, Wash., Sept. 28.—In the recent primaries in this state the Progressives cast about 25,000 votes out of a total vote exceeding 300,000, or about eight in every hundred. The Republican vote was greater than that of the Democrats and the Third Termers combined.

S. W. Perkins, Republican national committeeman for Washington, who has been engaged in making a canvass of the political situation in this state, says that he is in receipt of letters from every section indicating a remarkable falling off of Roosevelt's strength. The figures of the primary demonstrate that these letters accurately present popular sentiment. Mr. Roosevelt claimed the Washington delegation in the Republican National convention in Chicago. The absurdity, not to say dishonesty, of his claim, is proven by the poor showing made by his followers in the recent primary.

A FAILURE IN COLORADO

Why the Roosevelt Movement Has Failed to Materialize.

"The Roosevelt movement is a failure in Colorado," said David Heaton of Salida, Colo., during a recent visit to Chicago, while discussing the political situation in his state. He is president and general manager of the Federal Consolidated Monumental Granite company, and is also identified with large mining interests. "We are tired of industrial and political pyrotechnics in Colorado," he continued. "We have been through all sorts of disturbances in our state. We have seen what were called 'lynchings' here. We have had our wild and woolly experiences and we have known what it is to deal with strikes and strikers. Mr. Roosevelt is now a dangerous type of political striker, doing nothing but raising trouble. We do not want a man of his temperament in the White House. We prefer to support President Taft."

Roosevelt a Frost in Oregon.

A. V. Spalding, a widely known contracting engineer of Portland, Ore., while on his way east from Portland, reports that the Roosevelt tour through Washington, Oregon and the Pacific coast states was a frost. A letter received at the Taft headquarters from Edward D. Baldwin, secretary of the Oregon state central committee, says: "Things are looking better here every day for Taft. The lukewarm reception given Roosevelt in Portland the other day has given courage to our people."

Decreasing in Iowa.

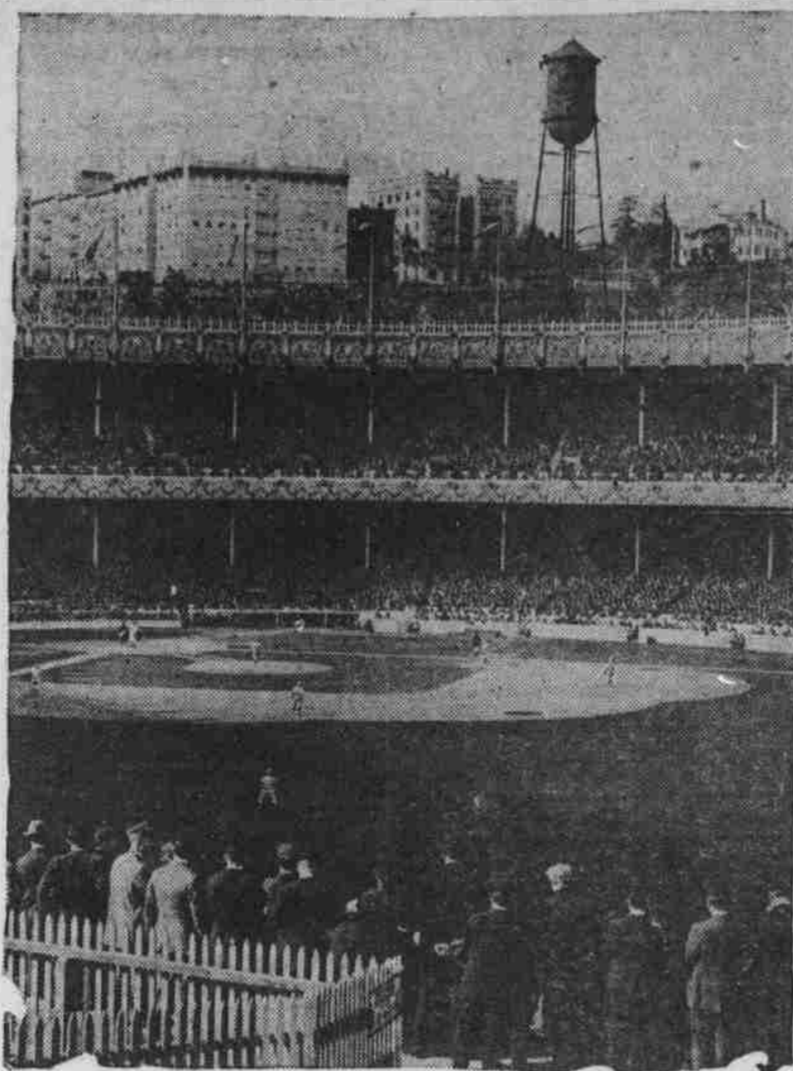
Cedar Rapids, Ia., Sept. 23.—James A. Trembl and Luther A. Brewer of this state, officers of the Iowa League of Taft Clubs, who have been assisting in the organization of Republicans in the state, have received reports from every county showing the decrease of Roosevelt sentiment, and assert that the Republican strength of the state is crystallizing among President Taft.

The Wilson Fall Frost.

The free trade Evening Post publishes a lot of figures to show what would happen if all the states voted the same as Vermont in November. A two-and-three-makes-five school-boy could tell the free trade Evening Post that if all the states should vote in November the same way Vermont has voted Taft would have the whole electoral college.

It came early, but it came with a bite to it—the Wilson fall frost. Bryan and Parker were both elected in August and buried under a snow-storm of ballots in November, and Wilson is hurrying to the same snow-pile.

View of Diamond and Grand Stand At Opening of the World's Series



Copyright, 1912, by American Press Association.

THIS section of a panoramic view of the famous Polo grounds, New York, was taken during the opening game of the world's series between the Giants and the Red Sox. It shows the whole diamond with the game in progress and a part of the huge concrete grand stand jammed with fans. After the old grand stand at the Polo grounds burned down a few years ago work was begun on making the field over Brush's stadium, as the grounds are called by many, is now one of the best, if not the best, baseball fields in the country. It cost about \$500,000 to reconstruct and will seat over 36,000 persons. The official attendance at the first game was 35,730. The receipts were \$75,127. An interesting feature of this picture is the Jewel residence up on the bluff at the right. It will be remembered that General Washington made this homestead his headquarters during the Washington heights campaign. In the midst of modern sport one has but to lift his eyes to this old landmark to be taken back over a century to Revolutionary times.

WILSON WOULD REPEAL ALL PROTECTIVE TARIFF LAWS.

The following is taken from an address delivered by Professor Woodrow Wilson before the tariff board in 1882, showing his view then on the question of the tariff and the distinct announcement of his position as a free trader, opposed to all tariffs except merely for the purpose of raising revenue: "But the danger of imposing protective duties is that when the policy is once embarked upon it cannot be easily receded from. Protection is nothing more than a bounty, and when we offer bounties to manufacturers they will enter into industries and build up interests and when at a later day we seek to overthrow this protective tariff we must hurt somebody, and of course there is objection. They will say: 'Thousands of men will be thrown out of employment and hundreds of people will lose their capital. This seems very plausible; but I maintain that manufacturers are made better manufacturers whenever they are thrown upon their own resources and left to the natural competition of trade.'"

ROOSEVELT VOTE SMALL

Primaries in Michigan Show That Republicans Are Loyal.

Detroit, Mich., Sept. 28.—Charles D. Hillis of the Republican national committee, who recently spent a day in this state, held a conference with the Republican county chairman—83 counties being represented by these leaders of county organizations. Eighty of the county chairmen reported that their counties would vote for Taft and only three stated that conditions were doubtful. These reports are the logical sequence of the recent primary in Michigan where the vote for the Third Term party ticket was pitifully small. Representative McLaughlin of the Ninth Michigan District, in speaking of conditions in that state, says that Roosevelt is losing ground daily and the outlook for a splendid majority for Taft is growing every day. The recent state Republican convention was attended by nearly 1,500 delegates. Great enthusiasm was manifested and the speakers were applauded. Roosevelt's name was not mentioned, while President Taft's name was loudly cheered.

REFUSE TO JOIN ROOSEVELT

New Mexico Republicans Prefer to Remain With Their Party.

Santa Fe, N. M., Sept. 27.—United States Senator Thomas B. Catron of this state says that a large number of the Progressives are refusing to go into the new party. They prefer to remain with the Republican party. "It looks to me now," he says, "as if the electoral vote of New Mexico is certain to be given to President Taft." Albuquerque, N. M., Sept. 27.—"So far as the third party is concerned in New Mexico, it is as dead as Julius Caesar," is the assertion of the Albuquerque Morning Journal, the official newspaper of this state. The Journal names a number of men, including former Governor H. J. Hagerman and Associate Justice R. H. Hanna, who have fought the battles of the Progressive movement, but who have quit in disgust. The third party in New Mexico is characterized as a "dead duck."

HAS CHANGED AS CANDIDATE

Woodrow Wilson's Speeches Now Those of Office Seeker.

Scattered among the platitudes of Dr. Wilson's speech of acceptance are some truths. None is more significant than this: "We stand in the presence of an awakened nation, impatient of partisan make believe." Following which he makes believe that he is telling the voters of the country his position on the campaign issues. No one has yet been able to determine from a reading of the speech precisely what that position is. Some slight enlightenment comes from time to time in his later utterances, like, for example, the declaration the other day that Tammany is to be safe from his assaults; but none of it is satisfying. Dr. Wilson, in the pre-convention days, was represented to the country as a scholarly gentleman, too lofty of mind to practice the wiles of the professional politician, too earnest in the cause of good government to be sought but frank and fearless in his expression, too unselfish to put private ambition above the public weal, too idealistic in character to truckle to the forces of evil in the nation. But how singularly he has masked all of these qualities since William Jennings Bryan forced his nomination at Baltimore. There is no difference, save in the purity of the English, between his speeches and the speeches of the professional office seeker of the worst period in American politics. He steps pussy footed over all the large questions of the day. He exhibits a suspiciously broad tolerance for all elements in the body politic, even the elements which, to nominate him, Bryan found it expedient to denounce by name in the convention. There is none of the rugged frankness of utterance that characterized his writings in the days before he was inoculated with the virus of political ambition. He is proving over apt as an advanced student of practical politics. It is not a pleasant nor a heartening exhibition he makes of himself. The right minded citizen can feel nothing but sadness in contemplating a man of education and culture so intent upon partisan and personal victory that he sacrifices those ideals of truth and honesty for which he has always stood to fawn upon and honeycomb the voters. Dr. Wilson as a candidate is not in character with the Dr. Wilson that was pictured to us prior to the Baltimore convention. This "awakened nation, impatient of partisan make believe," detects the difference.

Bourne's Accusation Baseless.

Senator Bourne has charged Ben Selling, Republican direct primary nominee for Senator, with violating the corrupt practices act. But he knows the accusation is without foundation. Bourne had an object in making the accusation. Bourne wanted to distract, if possible, the attention of the voters from his deliberate repudiation of the direct primary law by becoming an independent candidate after having been rejected by the voters in the primary nominating election. But the people are not so easily fooled. They will refuse to disregard the result of the primary election at the behest of Senator Bourne or any other disappointed candidate. Oregon voters are not repudiators. They are not going back on the Oregon system and permit it to be used as a vehicle for the selfish political advancement of any one man. They will not repudiate the direct primary and Senator Bourne owes them an apology for urging that repudiation.

Bourne and the Tariff.

In an address in Portland a few days ago, Walter M. Pierce, prominent Eastern Oregon Democrat, had the following to say concerning Senator Bourne and his tariff record: "But if Bourne is re-elected, how will he vote? Nobody knows and I doubt if he knows himself. When the Payne-Aldrich bill was being considered Bourne admitted on the floor of the Senate that he did not know anything about the tariff but left that with Aldrich with whom he voted in nearly every instance. Neither do we want a man in the United States Senate who is so close to the Standard Oil Company—an intermediary, if you please, for that corporation."

Trapped.

"John, did you post that letter I gave you this morning?" "Yes, dear," said John without looking up from his paper. "Well, what is your answer?" "Wh-what?" "What is your answer? That letter was directed to you." "Wh-what do you say? Directed to me? I didn't notice it." And as John in amazement took it out of his pocket to verify his wife's assertion he saw that he had been caught again. It was not addressed to him.

THE REAL TRUTH ABOUT DELEGATES

THE ATTEMPT THAT WAS MADE TO STEAL THE NOMINATION FOR ROOSEVELT.

SCORES OF FAKE CONTESTS

Evidence of Attempted Thefts Conclusive and Overwhelming, While President Taft's Title Is Honest and Clear.



WALTER L. TOOZE, Jr.

Republican Candidate For Joint Representative

For the counties of Polk and Lincoln

"Stands for Rigid Economy in the disbursement of Public funds; opposed to the Creation of Useless Salaried Offices and Commissions; will give this District an active and aggressive representation; Justice to all—special privileges to none."

No. 68 on Official Ballot

(Paid Advertisement.)

TRY OUR ICE CREAM AND SODAS THE BEST ON EARTH Ellis' Confectionery DALLAS, OREGON

DALLAS STATION TIME CARD

SOUTHERN PACIFIC		WESTERN RY. CO.	
LEAVING DALLAS	ARRIVING DALLAS	LEAVING DALLAS	ARRIVING DALLAS
Passenger No. 74	7:05 a. m.	Passenger No. 77	11:10 a. m.
Passenger No. 76	2:15 p. m.	Passenger No. 75	7:15 p. m.
SALEM, FALLS CITY & WESTERN RY. CO.			
East Bound.		West Bound.	
TRAIN NO. 3.		TRAIN NO. 1.	
Lv. Dallas	7:35 a. m.	Lv. West Salem	8:00 a. m.
Ar. West Salem	8:15 a. m.	Lv. Dallas	9:45 a. m.
TRAIN NO. 4.		Lv. Falls City	
Lv. Black Rock	11:00 a. m.	Ar. Black Rock	10:35 a. m.
Lv. Falls City	11:15 a. m.	TRAIN NO. 2.	
Lv. Dallas	11:50 a. m.	Lv. West Salem	1:20 p. m.
Ar. West Salem	12:30 p. m.	Lv. Dallas	2:00 p. m.
TRAIN NO. 6.		Ar. Falls City	
Lv. Falls City	2:40 p. m.	Lv. West Salem	4:45 p. m.
Lv. Dallas	3:10 p. m.	Lv. Dallas	5:30 p. m.
Ar. West Salem	3:40 p. m.	Ar. Falls City	6:00 p. m.
TRAIN NO. 8.		TRAIN NO. 11. (Sunday Only.)	
Lv. Falls City	6:10 p. m.	Lv. West Salem	8:00 a. m.
Ar. Dallas	6:40 p. m.	Lv. Dallas	9:45 a. m.
TRAIN NO. 10. (Sunday Only.)		Lv. Falls City	
Lv. Dallas	7:25 a. m.	Ar. Black Rock	10:55 a. m.
Ar. West Salem	8:15 a. m.	TRAIN NO. 12. (Sunday Only.)	
TRAIN NO. 12. (Sunday Only.)		Lv. West Salem	
Lv. Black Rock	11:40 a. m.	Lv. Dallas	2:05 p. m.
Lv. Falls City	11:55 a. m.	Lv. Falls City	2:25 p. m.
Lv. Dallas	12:30 p. m.	Ar. Black Rock	2:55 p. m.
Ar. West Salem	1:10 p. m.	TRAIN NO. 14. (Sunday Only.)	
TRAIN NO. 14. (Sunday Only.)		Lv. Black Rock	
Lv. Black Rock	4:00 p. m.	Lv. West Salem	5:50 p. m.
Lv. Falls City	4:15 p. m.	Ar. Dallas	6:30 p. m.
Lv. Dallas	4:50 p. m.	INDEPENDENCE & MONMOUTH RY.	
Ar. West Salem	5:30 p. m.	LEAVING DALLAS	
LEAVING DALLAS		ARRIVING DALLAS	
No. 65	8:30 a. m.	No. 64	6:45 a. m.
No. 69	1:00 p. m.	No. 63	11:30 a. m.
No. 71	3:30 p. m.	No. 66	3:05 p. m.
No. 73	7:20 p. m.	No. 70	6:55 p. m.
LEAVING INDEPENDENCE		ARRIVING INDEPENDENCE	
No. 64	6:00 p. m.	No. 65	9:15 a. m.
No. 68	10:50 a. m.	No. 69	1:40 p. m.
No. 66	2:30 p. m.	No. 71	5:05 p. m.
No. 70	6:15 p. m.	No. 68	11:30 a. m.
Airlie Division.		ARRIVING AIRLIE	
LEAVING AIRLIE		ARRIVING AIRLIE	
No. 62	7:30 a. m.	No. 61	7:20 a. m.
No. 72	8:00 p. m.	No. 73	4:45 p. m.
LEAVING INDEPENDENCE		ARRIVING INDEPENDENCE	
No. 61	8:30 p. m.	No. 62	8:15 a. m.
No. 72	2:35 p. m.	No. 73	5:45 p. m.